

Badische Landesbibliothek Karlsruhe

Digitale Sammlung der Badischen Landesbibliothek Karlsruhe

Orlando paladino - Don Mus.Ms. 723/a-d

Haydn, Joseph

[S.l.], 1790 (1790c)

Sinfonie

urn:nbn:de:bsz:31-82875

Sinfonia

Vivace assai *à due* *f*

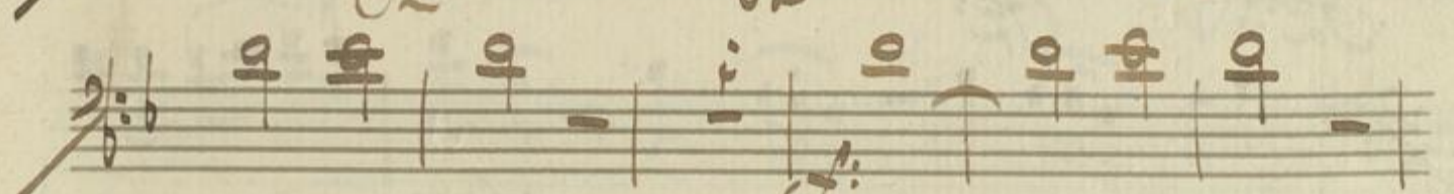
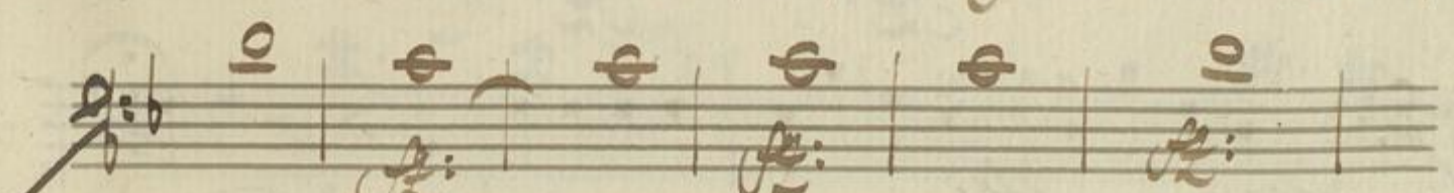
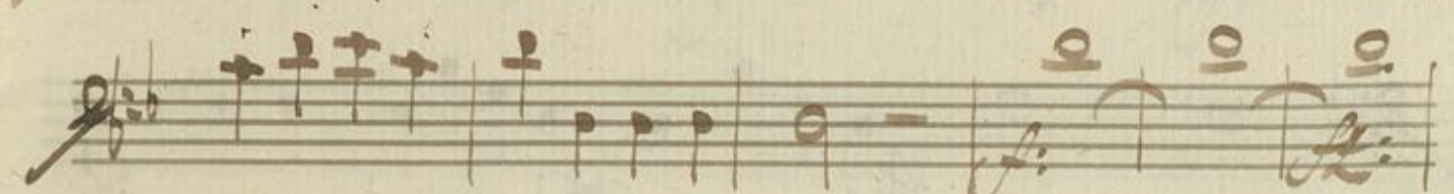
Solo

à deux *f*

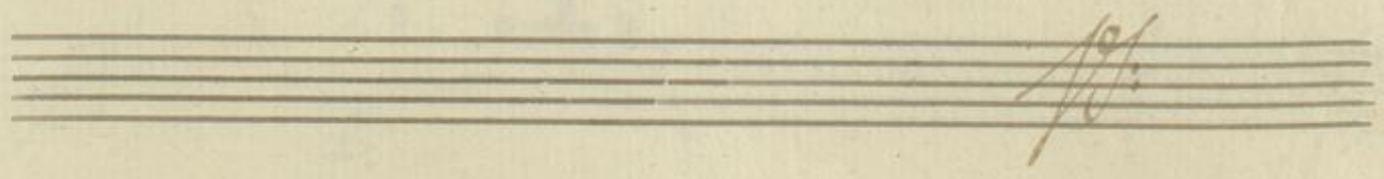
Handwritten musical notation on six staves. The notation includes various notes, rests, and symbols such as '10' and 'φ'. The first five staves contain rhythmic patterns and notes, while the sixth staff has a more complex melodic line with a 'V' marking. The notation is written in a historical style, possibly from the 18th or 19th century.

Four empty musical staves. A large, stylized signature or flourish is written across the second and third staves. The signature is written in a cursive, historical hand.

A handwritten musical score on ten staves. The notation is in a historical style, likely from the 18th or 19th century. The first staff begins with a treble clef, a key signature of one sharp (F#), and a common time signature (C). The music features a variety of note values, including quarter, eighth, and sixteenth notes, as well as rests. There are several dynamic markings, including *f* (forte) and *ff* (fortissimo). The score includes slurs, ties, and some complex rhythmic patterns. The paper is aged and shows some staining, particularly along the left edge.



Ad lib.



Solo

Handwritten musical score for a solo instrument, likely a violin or flute, consisting of ten staves. The notation includes various rhythmic values, accidentals, and dynamic markings. The first staff begins with a treble clef and a key signature of one flat. The second staff has a handwritten 'f2' above it. The third and fourth staves feature 'Lz' markings. The fifth staff is marked 'Solo'. The sixth staff has 'a due' written above it. The seventh staff has 'ff' written below it. The eighth staff has 'ff' written below it. The ninth staff has 'ff' written below it. The tenth staff has 'ff' written below it. The score concludes with a double bar line and a fermata.