

Badische Landesbibliothek Karlsruhe

Digitale Sammlung der Badischen Landesbibliothek Karlsruhe

Salve regina - Don Mus.Ms. 750

Hillemeyr, Johann Bernhard

[S.l.], 1711 (1711)

urn:nbn:de:bsz:31-90833

1

N: 3.
Salve Regina a. 4.
Basso Solo. ecc. C:
I Violin
I Alt Viola Concert
I Bass Violon
& Organo.

Auth: Del: sig: Joan: Bernhard Hillemejer

In vsum — A. D.
Anno Domini 1711.

[Red ink signature]

2

Auth: Del: sig: Jo: Bernhard Hillemayer Basso Solo: 1

mus no 750

Salve Salve Salve Regina
Salve Regina Mater Misericordiae Salve Vita
Vita Dulcedo & spes Nosttra Salve Salve
Salve Ad te Clamamus Ad te Clamamus
: mus Clamamus Ecceles Clamamus Ecceles & Ecceles
filij Eve filij Eve
Ad te ad te ad te ad te Suspiramus Gementes et flentes
Et flentes In hac lacrymaeu Valle Salve Regina
allegro Eia Eia ergo Ad vocata Nostra Verte

Illos Tuos Misericordes Oculos Ad Nos Convertere

Eia Eia Ergo Ad nos Convertere Adagio Et

Jesus Benedictu fructu ventris Tui Nobis post hoc

Excilium O stende O stende O

Clemens O Stende O pia O Dulcis

Virgo Maria O stende O Dulcis

O Dulcis virgo Maria. Dulcis

Virgo Maria

Salve Regina à Basso Solo. & Violin Alto et Organo. 1
Violino Solo.



Salve



Ad te suspirans.



Verten

Allegro

4

Eia Ergo

tue

Ostende

tue

Viola Concerto. *tu* 1

Alt Viola

mm 950 tu

Salve Regina

Ad te clamamus

Ad te suspiramus

Sol.

Zu Verten

tu *in* *Allegro*

Eia Ergo *in*

tu *3* *4* *Ostende* *in*

Concerto.

1 2 Violino. à Cornetto solo

Handwritten musical notation on a single staff, featuring treble clef, a key signature of one flat, and a 2/4 time signature. The music consists of several measures of eighth and sixteenth notes. The word "tu" is written above the staff in several places. A handwritten note "And. No. 250" is visible in the upper right corner of the staff.

Handwritten musical notation on a single staff, featuring a bass clef and a 4/4 time signature. The music consists of several measures of quarter and eighth notes. The word "tu" is written above the staff.

Handwritten musical notation on a single staff, featuring a bass clef and a 4/4 time signature. The music consists of several measures of quarter and eighth notes. The word "tu" is written above the staff.

Ad te Clamamus

Handwritten musical notation on a single staff, featuring a bass clef and a 4/4 time signature. The music consists of several measures of quarter and eighth notes. The word "tu" is written above the staff.

Handwritten musical notation on a single staff, featuring a bass clef and a 4/4 time signature. The music consists of several measures of quarter and eighth notes. The word "tu" is written above the staff.

Handwritten musical notation on a single staff, featuring a bass clef and a 4/4 time signature. The music consists of several measures of quarter and eighth notes. The word "tu" is written above the staff.

Ad te Suspiramus

Handwritten musical notation on a single staff, featuring a bass clef and a 4/4 time signature. The music consists of several measures of quarter and eighth notes. The word "tu" is written above the staff.

Handwritten musical notation on a single staff, featuring a bass clef and a 4/4 time signature. The music consists of several measures of quarter and eighth notes. The word "tu" is written above the staff.

Handwritten musical notation on a single staff, featuring a bass clef and a 4/4 time signature. The music consists of several measures of quarter and eighth notes. The word "tu" is written above the staff. The tempo marking "allegro" is written above the staff.

Zu Eia Ergo.

Verten

Handwritten musical notation on a single staff. The notes are mostly eighth and sixteenth notes. A handwritten word "tu" is written above the staff.

Handwritten musical notation on a single staff. The notes are mostly eighth and sixteenth notes. A handwritten word "tu" is written above the staff.

Handwritten musical notation on a single staff. The notes are mostly eighth and sixteenth notes. A handwritten word "tu" is written above the staff.

Handwritten musical notation on a single staff. The notes are mostly eighth and sixteenth notes. A circled word "Stende" is written below the staff.

Handwritten musical notation on a single staff. The notes are mostly eighth and sixteenth notes. A handwritten word "tu" is written above the staff.

Empty musical staff with a treble clef and a common time signature.

Empty musical staff with a treble clef and a common time signature.

Empty musical staff with a treble clef and a common time signature.

Empty musical staff with a treble clef and a common time signature.

Adagio. Auth: Del: sig² f: B: H Organo. ⁷ Ann. M. 7 50

66 67 43 6 6 6

Salve Regina 6 6 4^u 6 6 7 6 6 5 5⁶ 43

43 6 7 43

43 6 4^{te}

6 6 6

43 6 7 6 43

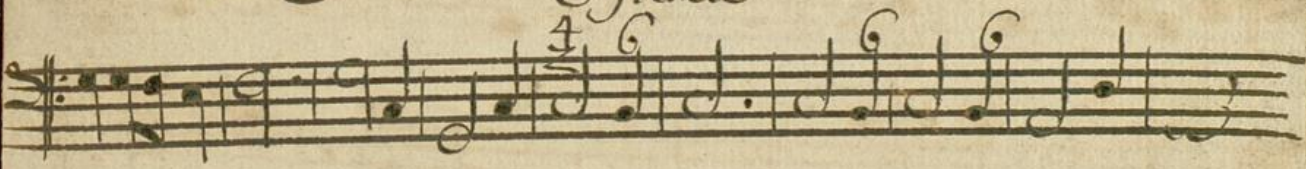
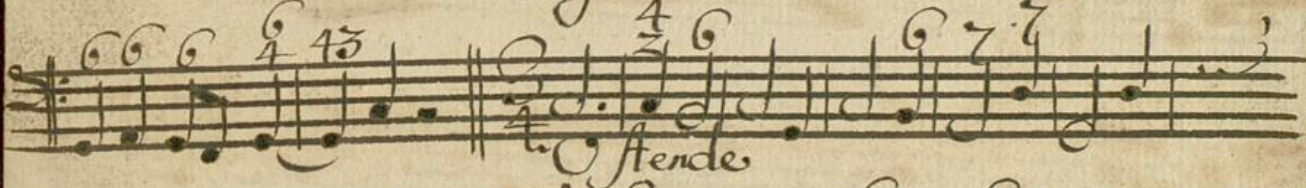
7 6 7 6 7 6 5

4^{te} 43

Verten

Adagio

2



4