

Badische Landesbibliothek Karlsruhe

Digitale Sammlung der Badischen Landesbibliothek Karlsruhe

Prinzessin Christine - Don Mus.Ms. 863a-f

Kalivoda, Jan Křtitel Václav

[S.l.], 1828 (?1828?)

[Fragment]

urn:nbn:de:bsz:31-92993

Potpourri

Oboe

W. A. Mozart

Andante $\frac{6}{8}$ 11. 27. *Air française* Allegretto $\frac{2}{4}$ f_0

20. *thema* *tutti* f_0 Solo 8

2. 15. *tutti* f_0

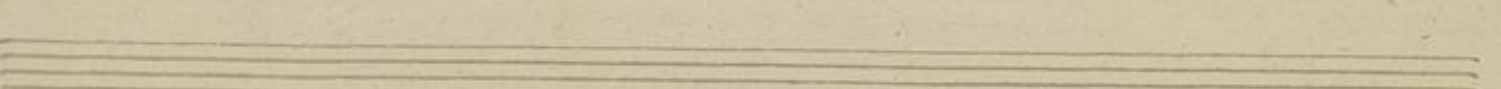
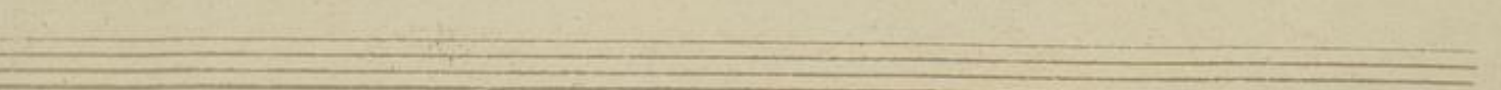
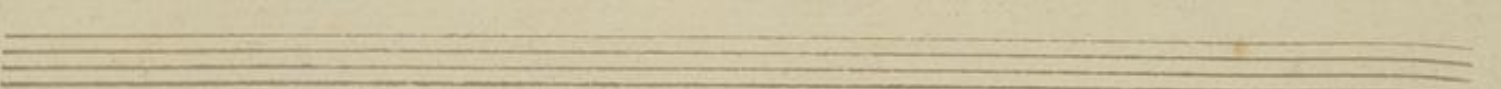
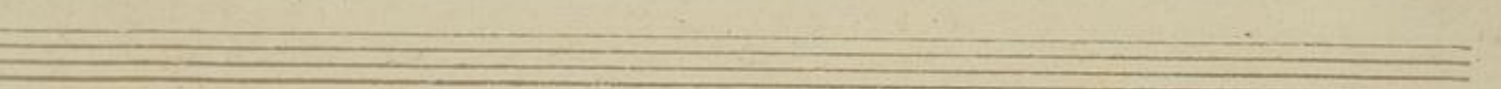
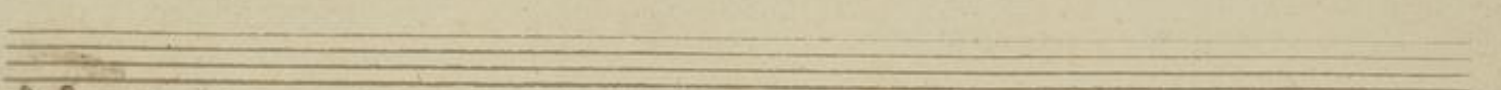
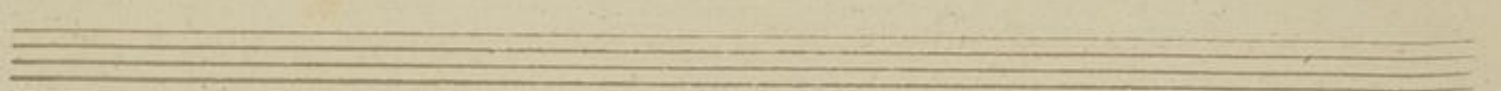
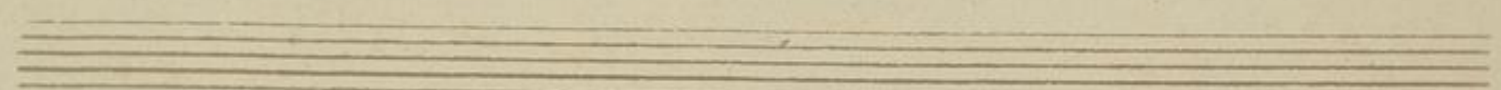
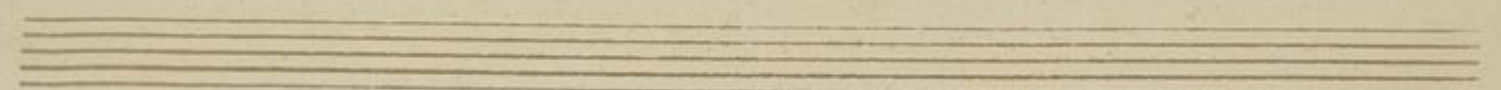
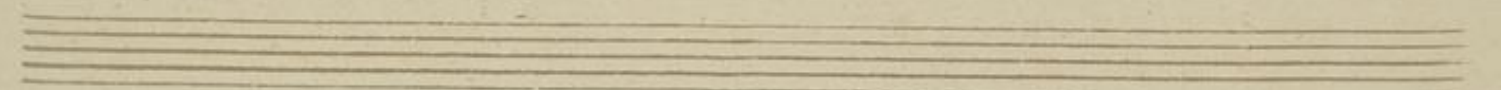
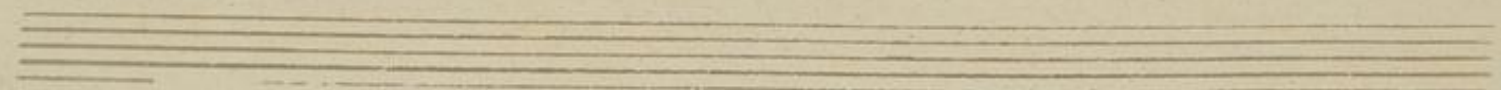
40. 15. *Allegro* f_0

11. 12. *air tirolin* 25. *Allegretto* f_0

27. f_0

3. f_0

10. 13. *Piu mosso.* f_0



Einlage. No. 10 $\frac{1}{2}$

Oboe primo.

Tempo di

Marcia.

Handwritten musical score for Oboe primo, featuring six staves of music. The notation includes various notes, rests, and dynamic markings such as *p* and *pp*. The music is written in a single system across six staves.

Oboe 2^{do} steht in der Höhe
als Primarius.

The image shows a page of handwritten musical notation on aged, yellowed paper. The page is divided into 12 horizontal staves. The notation is written in dark ink and includes various musical symbols such as notes, stems, beams, and rests. The handwriting is somewhat faint and appears to be a sketch or a working draft. The notation is spread across the middle section of the page, with some staves at the top and bottom being mostly blank. The paper has a slightly textured appearance and shows signs of wear, including some discoloration and a small tear on the left edge.