

Badische Landesbibliothek Karlsruhe

Digitale Sammlung der Badischen Landesbibliothek Karlsruhe

Abschiedskantate - Don Mus.Ms. 990

Kalivoda, Jan Křtitel Václav

[S.l.], 1834 (1834)

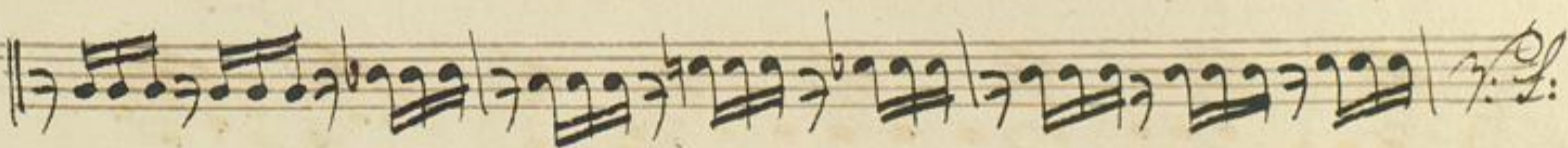
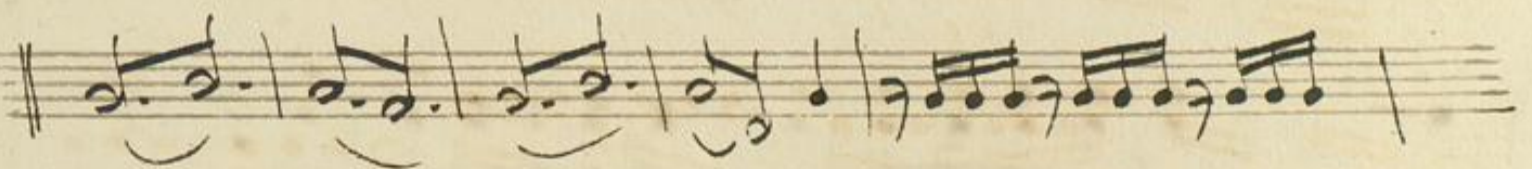
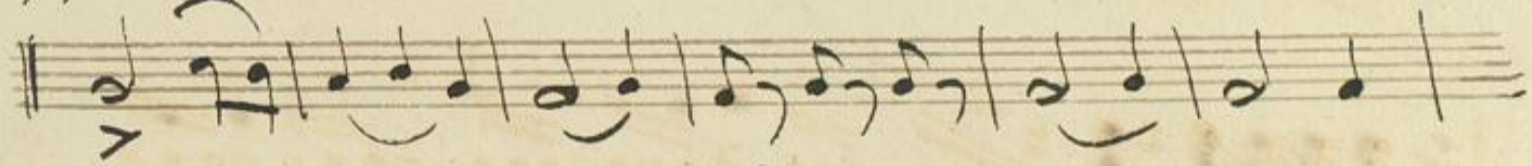
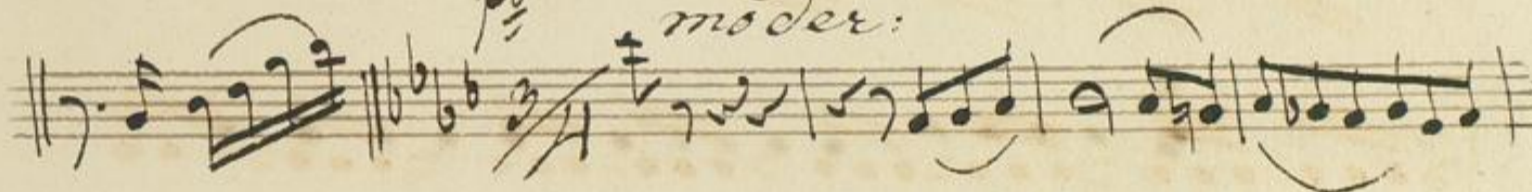
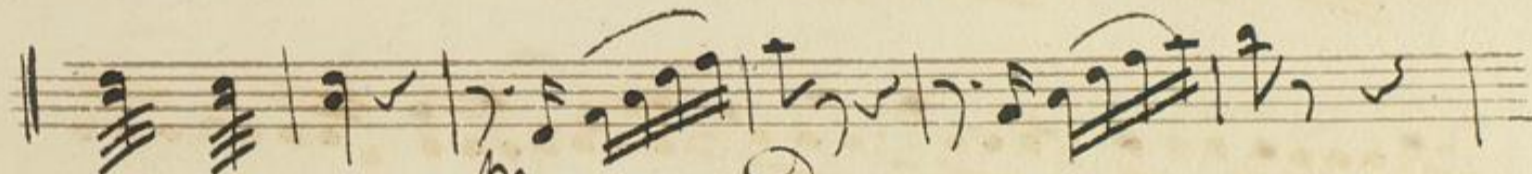
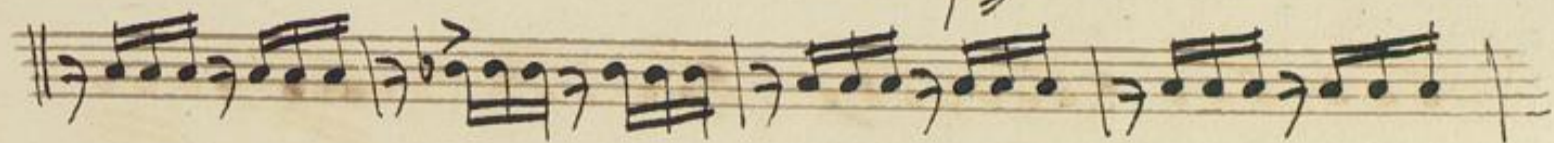
Abschiedskantate

urn:nbn:de:bsz:31-95665

Viola.

Larghetto $\frac{2}{4}$ *pp*

f



Allo

un poco più lento

pp

pp

allegro

pp

A handwritten musical score consisting of ten staves. The notation is in a cursive hand. The first staff begins with a treble clef and a key signature of one flat. The tempo marking *Allo* is written above the first staff. The second staff has the marking *un poco più lento* written in red ink. The third staff contains a series of eighth notes. The fourth staff has a *pp* marking. The fifth staff continues with eighth notes. The sixth staff has a *pp* marking. The seventh staff has a *pp* marking. The eighth staff has a *pp* marking. The ninth staff has an *allegro* marking. The tenth staff has a *pp* marking. The score ends with a double bar line.

Allegretto Grazioso

A handwritten musical score on aged paper, consisting of ten staves. The music is written in a cursive style. The first staff begins with a treble clef, a key signature of one sharp (F#), and a common time signature (C). The notation includes various note values, rests, and dynamic markings. A red 'pizz.' marking is present above the second staff, and a red 'arco.' marking is present above the third staff. The score concludes with a double bar line and a fermata on the final note of the tenth staff.

Handwritten musical score on ten staves. The notation includes various rhythmic values, rests, and dynamic markings. Key annotations in red ink include:

- ritardando* (written across the third and fourth staves)
- Lento* (written above the fourth staff)
- pizz.* (written above the eighth staff)
- Larghetto* (written below the ninth staff)
- arco.* (written above the ninth staff)

The score concludes with a double bar line on the tenth staff.

Musical notation on a single staff, featuring a treble clef, a key signature of one sharp (F#), and a common time signature (C). The notation includes various note values and rests.

Musical notation on a single staff, continuing the piece with similar note values and rests.

Musical notation on a single staff, featuring a treble clef and a key signature of one sharp. The notation includes various note values and rests.

Musical notation on a single staff, continuing the piece with similar note values and rests.

Musical notation on a single staff, featuring a treble clef and a key signature of one sharp. The notation includes various note values and rests.

Musical notation on a single staff, featuring a treble clef and a key signature of one sharp. The notation includes various note values and rests.

Musical notation on a single staff, featuring a treble clef and a key signature of one sharp. The notation includes various note values and rests. Below the staff, the text *len = do = = = = =* is written in red ink, followed by a *pp* dynamic marking.

Musical notation on a single staff, featuring a treble clef and a key signature of one sharp. The notation includes various note values and rests. Below the staff, the text *diminu en = = do = =* is written in red ink.

Musical notation on a single staff, featuring a treble clef and a key signature of one sharp. The notation includes various note values and rests. Below the staff, the text *no.* is written in red ink.

Fine.

[Faint, illegible handwriting, likely bleed-through from the reverse side of the page]