

# **Badische Landesbibliothek Karlsruhe**

**Digitale Sammlung der Badischen Landesbibliothek Karlsruhe**

## **Symphonies - Don Mus.Ms. 1065**

**Koppaur, Anton**

**[S.l.], 1770 (1770c)**

Violine I

**urn:nbn:de:bsz:31-97231**

Sinfonia G. Ex G.

à

Due violini

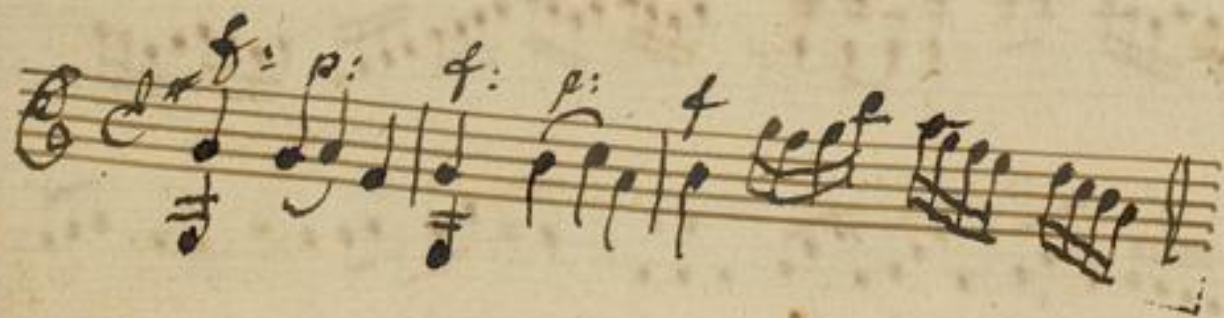
Due flauti

Due Corni.

Viola

et

Basso.



del Signor Koppanz.

Fr Henr: Frolich

Ord: Prieder

Præsesheimer

Man No 1065

Allegro: 2

Violino: 2mo:

The image shows a page of handwritten musical notation for the second violin part. The score consists of ten staves of music. The tempo is marked 'Allegro: 2' and the instrument is 'Violino: 2mo:'. The music is written in a key with one sharp (F#) and a 2/4 time signature. The notation includes various rhythmic values, slurs, and dynamic markings such as 'f' (forte) and 'p' (piano). The paper is aged and shows some wear and tear.

Mom...

rio:

andant

ff

f

f

f

f

f

f

f

Menuet:

Trio:

Menuet da:  
capo:

andante:

4  
allegro:

A handwritten musical score on six staves. The first staff begins with a treble clef, a key signature of one sharp (F#), and a 6/8 time signature. The tempo is marked 'allegro:'. The music is written in a cursive hand and includes various notes, rests, and dynamic markings such as 'p' (piano) and 'f' (forte). The second staff contains a complex passage with many beamed notes. The third staff features a dense section with many sixteenth notes. The fourth staff continues the melodic line. The fifth staff shows a similar rhythmic pattern. The sixth staff concludes the piece with a final cadence. The paper is aged and has some staining.