

# **Badische Landesbibliothek Karlsruhe**

**Digitale Sammlung der Badischen Landesbibliothek Karlsruhe**

## **Roß Arznei Buchlein - Cod. Ettenheim-Münster 47**

**Lauremberg, Peter**

**1601-1615**

De distillatione et arte chimica

[urn:nbn:de:bsz:31-97465](https://nbn-resolving.org/urn:nbn:de:bsz:31-97465)

Lixiuum ꝛ Abluendo ꝛrio ita paraty

52

ꝛ ꝛ cis uiuae cinerū clauellatorū an tto ij, Contusa in  
mortario crassiuscula coquatꝛ in dila noua in quā infu  
dantꝛ tto xvi ꝛ ꝛareꝛi Ambrosian aqua vulgaris coquatꝛ  
ad consumptionē trium digitorū transversaliū, sedulo illa  
agitando baculo ne subsideant post depleatꝛ ꝛ fileretꝛ per  
chartā bibulā ꝛ habebis lixiuū colori subflauo nō absimile  
in lixiuū coꝛ x vel pluribꝛ iniciato ꝛꝛ Crudi ꝛꝛ iij vel  
propter easꝛ in vase uitreo patenti ligneo pistillo aut baculo  
frequēter ꝛ ꝛtinue agitato donec lixiuū a fœcibꝛ ꝛꝛ nigre  
dine contrahat, post deple lixiuū deturpatū atꝛz cola per  
chartā bibulā ꝛ ad easdē operas amplig usurpa, atꝛz tam  
diu laua eandē ꝛꝛ portione donec lixiuū superfusū a feci  
bꝛ amplig nō tingatꝛ, quod fit septies uel pluries purgatiōe  
iterata postea ꝛrio ita purgato superfunde acetū uini ad emi  
nentiā unig aut alterig digiti ꝛ eodē quo diximꝛ modo in pa  
tella uitrea agita, ipsū acetū depurpatū deple ꝛ fileratū eisdem  
usibꝛ reserua Aceto v ꝛrio ita superfuso iniciantꝛ pugillo iij vel  
plures salis ꝛunis. ꝛ sic aliquoties nouo aceto affuso ꝛ fœcibꝛ suis  
acetū amplig nō tinget eritꝛz clarꝛ ꝛ ut dicūt celestis

172

Compendiosior modus ad faciendum Olu' Ollis

℞ Limatura Ollis .q.v. affunde ol Oli .q.s. pro soluedo Ac  
cū sextuplo Aq pluuial destil uel et spiri Oli .q.s. cū triplo  
aq finito deferuescere: postea liquore deple & si tota Ollis rasu  
ra in liquore nondū abierit, operā priore nouo oleo aut spiritu  
repeto donec integra Ollis limatura absupta & in liquore con  
uersa fuerit. liquore hunc filtratū, finito in cucurbita  
per arenas euaporare donec crusta appareat in eo, & his in  
cipiat cristallescere, mox ex arena in locū frigidū pone  
ad cristallizandū: liquor in cristallos nondū uersus deple  
atq; & iterū et calori Arenae exponatq; ad euaporandum,  
qui si foeces in ipso appareat, prius filtratq; & cristallizet  
hocq; labore iterato donec omnis liquor in Olu' fecerit  
cristallos expose calori solis aut ignis atq; exsiccet & ha  
bes Olu' quia q̄stat ex Ollis & oleo siue spiritu.  
Oli qui in sese q̄re q̄plectitq; Hermaphroditicū appellatq;

R Tartari Cribrati ℥ iij huic affunde Lixiuū  
 e Cineribz clauellatis vel Lixiuū e Sale tartari ℥ vi  
 interim dum affundis hoc lixiuū probe agita ꝑ  
 baculo ne efferuescat deinde horas 4 in loco tepi  
 do serua postea effunde lixiuū et aquā affunde ꝑ  
 intra manꝝ paalisper agita, quando materia subsedit,  
 tum effunde aquā, Hanc affusione ꝑ effusione aqua  
 rā repete donec nullā salēdine in illa amplig depre  
 hendas tū onē aquā effusā inde in olla ꝑ coque nō  
 aliter quā cū cremor ꝑ processū ꝑ  
 Caue ne calor intendatꝝ ꝑ soluetꝝ ꝑ

## vitriolū Albū vomitoriū

ꝑ vitrioli ℥ i inde in cucurbitā Superfude aquā  
 destillatā pluuiatē pone in arenā mediocriter calidā  
 ut soluatꝝ Solutio filtratꝝ ꝑ Chartā Emporeticā fil  
 trata inde in Cucurbitā ut grabat Superē cuticulā  
 exiatꝝ iterū ꝑ filtratꝝ ponatꝝ in frigidā ut cristallescat  
 Cristallos iterū solue, solutos filtra hoc repete donec nul

li cristalli amplig appareant tū labor peractū

Croc METALLORU

℞ Nitri ℥ij Antimonij ℥ij tartari ℥i pulvis  
creaty deinde pone crucibulū in igne circulari et  
sensim incandescat cū iam plane incadiūt tū corp  
levari materia mixtā sensim in crucibulū fude, qua  
do omē materia infuderis tū operi crucibulū & stet  
ita in candore per horæ quadratē vel donec non  
amplig fumū videas tū frigefactū paulū crucibulū  
elue aq frig. Huic aquae addatq aqua calida & in  
pluria vasa distribuaty stet ita per diē vel noctē pos  
tea infundaty crassa haec materia omis, in filtrū  
chartaceū & quando aqua exstillatauit tū materia  
in filtrō mamentē leniter sicca quae ē croc metallorū

R<sup>o</sup> & purificati ℥ iiii inde in vitrea Retortam  
 inferig lubata Affunde Aqua fortis ℥ viij pone  
 in arena appone recipiens vasa haec bene collu-  
 ta stent in loco tepido donec per se absqz igne &  
 dissoluat<sup>r</sup> (quod fit nunc maioris nunc minoris tempo-  
 ris spatio prout infusa & valida e) si hoc modo  
 non tot<sup>o</sup> dissoluat<sup>r</sup> tu destilla quod solutu<sup>m</sup> e & iteru  
 noua & affunde donec tot<sup>o</sup> soluat<sup>r</sup> solutione des-  
 tilla per retorta<sup>m</sup> ex cineribz quod destillatu<sup>m</sup> e rus-  
 sus affunde mercurio in retorta, flauo, & bene  
 mitra mag<sup>is</sup> agita ut soluat<sup>r</sup> rurs<sup>us</sup> & praecipitat<sup>r</sup>.  
 Destilla iteru, iteruqz affunde ut prior agita, ter-  
 tio affunde noua & & repete labore postea fra-  
 ge retorta & massa reperies varij coloris (si enim  
 ol Sulphuris affusa esset plane flauesceret) & si  
 quid crudi & adhuc super<sup>e</sup> id separa<sup>m</sup> massa super  
 manor fere & aq pluuiali destillata xultio per  
 duas horas Candescat Retorta) calida in paropside  
 vitreata aliquoties edulcora donec nulla auerionia

per senties aqua deinde deple & materia in ea  
de paropside siccoz siccata inditu in sartagine  
ferreū, supra carbonos baculo ferreo materia fer  
rea hinc inde agita donec rubedo placeat & nō  
amplius fumet signū perfectionis ¶ Et quando  
aurū nō tringit refrigerato ones superfunde 3 vel  
4 Spiritū vini & superaccēde

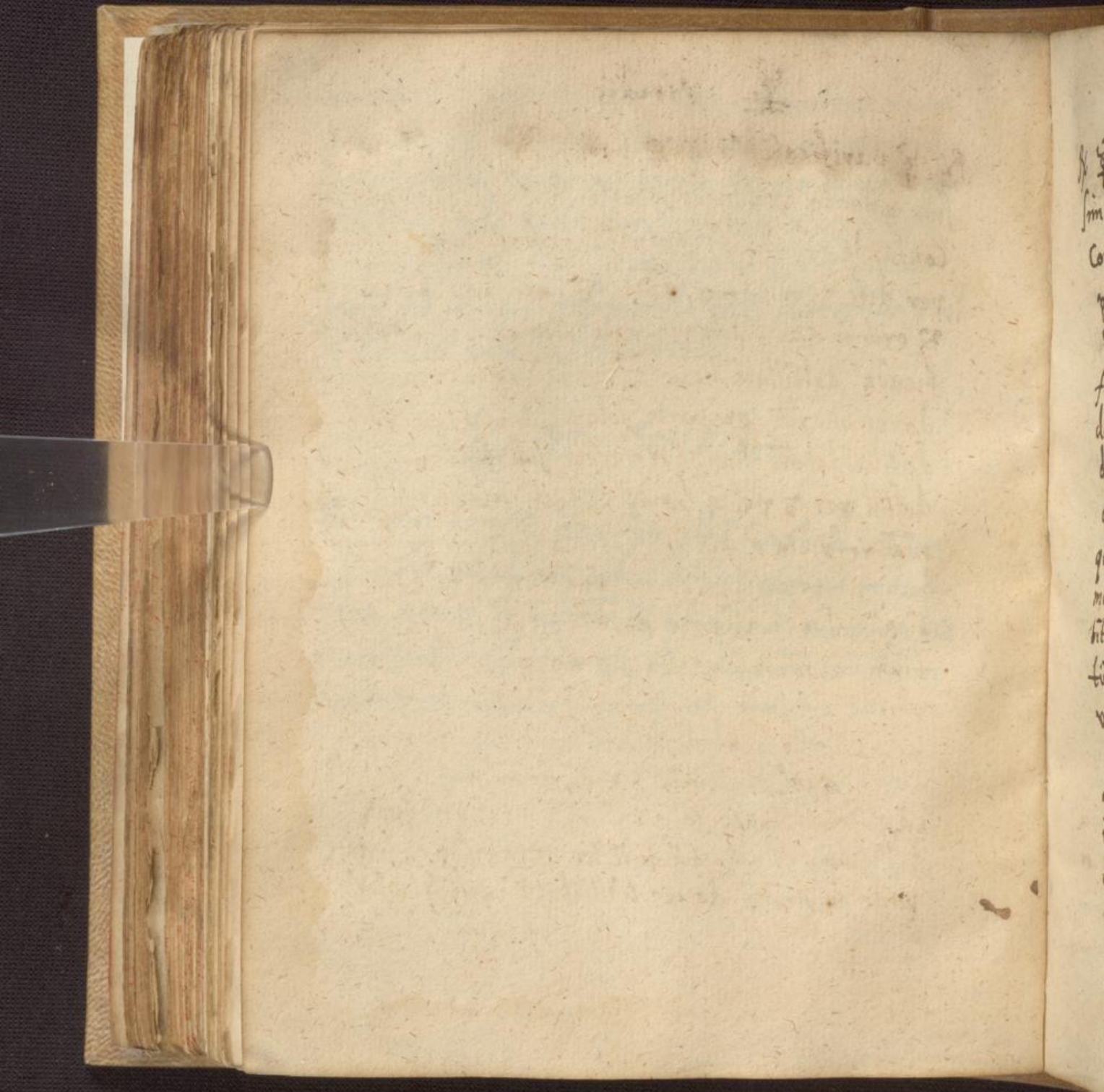
¶ per Smiridem

R Smiride, & tam diu illū candefac & rur  
sū extingue, donec intra digitos gterere possis pos  
tea contere in puluere & per tridū Reuerbera, Re  
uerberato affunde R ad 2 digitorū eminentium  
colloca in cineres digerat per dies

55

175





St  
Im  
Co  
f  
d  
b  
g  
m  
h  
f  
s

℞ ♀ purificati ℥iij ♀ purificatæ ℥i singulis scor  
 sin affunde & donec soluatꝝ solutiones has filtra &  
 Confunde, funde in Retortā inferig lutatā digerat  
 per dies 3 vel donec om̄s & extillarit tū exime  
 & erit in cucurbita materia Corulea cui rursꝝ af  
 funde destillatū hanc & circū agita intra manꝝ  
 donec maxia ex parte soluta sit materia & rursꝝ  
 destilla labore hunc ter repete sub fine vel quarta  
 destill per 3 vel 4 horas cādeat retortæ quæ post  
 quā refriacta & frāgily Circulo Candente in fundo  
 manebit materia nigerrā quā tere & inde in cucur  
 bita & super affunde acetū ad manꝝ sup eminē  
 tium digerat ita per 6 7 vel 8 dies dū tincturā  
 viridē effunde & reserua, infunde aliud acetū  
 una cū illo quod destillatū erat digerat iterū per  
 dies aliquot tincturā serua nouū acetū affunde  
 idꝝ toties donec soluatꝝ om̄s materia, quod si  
 difficulter soluatꝝ tū fortiter intra manꝝ agita &  
 pone in arena donec bulliat tū rursꝝ frigescat

ones hasce tructuras inde in cucurbita vitrea  
& liquore destilla manebit pulvis viridis in fundo  
qua exime & gunde postea melig exsiccata & puluerisa

### Arcanum Corallinum

Rx & purificati  $\text{tt}$  i colcotharis seu  $\text{e}$  de  $\text{O}$  ni  
tri an  $\text{tt}$  iij Colcothar & nitru prig contude gis  
ce bene huig mistura manipulu vnu singulis vicibz  
inde in mortariu aeneu affunde  $\text{Zj}$  & Valiquot  
guttas aceti destillati gunde pistillo donec & probe  
miste no amplig appareat (Si enim no bene misce  
atq; & tu subliatq; & operatio vana e) tum exime  
& repete huic labore donec totu & impastatq;. Vel  
melius per fitur hic Labor si matris in patina lignea  
seratq;. Massam hanc totam funde in cucurbitam  
lutatam cuiusq; venter aequaliter ascendat in Collum  
ponatur in fornacem absq; Capella, igne scilicet nullo  
subde ignem, primo lenem ut destillet phlegma aceti  
deinde sensim auge ignem durabit hic labor totus horas  
24. Oportet tamen ultimis ita augendus ignis ut plane car  
deat. Ascendet in Capitellum & cruidus coloru subni  
gro in medio Cucurbitae flauus, paulo inferius materiam

57  
rubicundam reperies. frige facto opere et fracto vitro  
collige omnem pulvere sublimatum, cuiuscumq; etiam sit  
coloris vna cum  $\frac{1}{2}$  iuis.

Nigram tamen materiam separa quam iterum vinica  
re poteris poteris per Calcem viuam et tartarum.

Deinde R<sup>s</sup>. Aluminis Calcinati

Nitri ana ~~to~~  $\frac{1}{2}$ .

Contusa et cribata impastentur cum praedicto pul-  
uere, irrorentur cum aceto quod prius exstillauerat.  
perficitur hic labor in patina lignea. da igne <sup>tenue</sup> ~~terram~~ donec  
humiditas Nitri et Aluminis exstillarit. Haec  $\frac{1}{2}$  prodeat  
doloribus articuloꝝ et Scabiti matieꝝ. post hanc ex-  
stillata auge ignem paulatim ad 24. horas sed Caue neminis  
interdat. Collum Cucurbitae apparet candidum interig ut  
Nig. latera Alembici ut spuma ubi vero Alembic Cucurbi-  
ta iungitur apparet color pulcherrimus rubiginosus Coral-  
lioru.

Finis hisce 24. horis, appone aliud receptaculu  
et da ignem intensissimu per horas 4. vel donec videas  
totum Collum flauescere, et Circa latum rubescere. Tum  
frige facto opere et rupto vitro Rubru collige terre et et al.

cora aqua pluuiali, flammam vero eodem modo uti turpeta  
in Sarsagine ferro supra igne agita donec rubedo placeat  
et non amplius fumet, deinde edulcora exsicca et postea 3.  
vel 4. Spiritum vini superaccende.

## § DVLCIS.

R § ~~ii~~ i

§ Viui probi purificati ℥iiij

Teratur simul in patina lignea donec puluis fiat impalpabilis  
quod bideo fieri potest si continuo trivris. Deinde aliquoties  
edulcorabis ad sufficientem dulcedine maioris tamen certitudi-  
nis causa, poteris post cognitam dulcedine ad huc ter vel quater  
ter edulcorare.

Deinde prius in aera deinde (melioris siccitatis gratia) in  
fornace siccet. Fornax 9

Siccatum si placet divide in duas partes  
Vnam partem inde in parapsidem vitreantam et ter vel quater so-  
per incende Vini Spiritum. Hic § paratū est  
Alterā partem inde in cucurbitulam non de curtata quam  
deinde claude speculo charbaceo et pone in arenā suppone  
x. 9.

igne gradualem (perficitur hic labor spatio 12 horarum <sup>58</sup>)  
ullinis duobus horis fortiter auge igne et sublimabitur & alba  
inferiori parte densius Superiori vero rarior, fracto vitro  
et abiectis facibus et densum et raru & tere (inter terendum  
flavescit) rursus inde in cucurbitulam sublima ut prius.

Iterum tere et tertio sublima et sic perfectus fit est. &  
Cordus qui in collum sublimatus est, abiectus.

### MERCURYI SUBLIMATI CRISTALLINI SPIRITUS DULCIS


<sup>Tornax</sup> X  
Tere & sublimatum in pulvere impalpabilem, superfunde  
optimum vini spiritum ad eminentiam 4. digitorum destilla ex  
Tornax arena donec spiritus tingatur (quo non dum accidit mihi  
licet is destillauerit) semper cum destillauit rursus eum  
dem destillatum vini spiritum affunde et rursus destilla  
ita repeta donec guttulas videas diuidere lacteas inter destil  
landum audibis saepe sonitum quasi vitrum frangeretur quod  
nihil te moueat, est enim liquor Mercurij.

Flores Butyri Antionij Tornaz 3

¶ Antionij optime triti & cribrati In ite optie cribra  
ti an tibi bene gisceaty & fudaty in Retorta vitrea col  
lu retorte bene abstergaty ponaty in arena apte tu alia  
Retorta Retorte hac luto collutety suppone igne lenem  
& paulatim illu auge uidebis spuma Draconu seu liquo  
rem Butyrosu effluere quod in collis Retortaru solet sub  
sistere & quasi conerescere, forcipe ergo carbone ignitu  
huc illuc supra & infra prudeter adose ut liquecat, sed  
caue ne carbo utru tngat. Hoc tam diu continuabis  
donec collu Retorte per se satis ignitu sit, quod ut tibi  
melig fiat supra arena pone ignitos carboes (vocaturs  
ignis suppressionis) effluit simul & crudg igne hunc  
glinua donec circulu rubeu in superioris colli parte  
prope capella uideas. Hoc signo apparete aufer  
Retorta recipiente & cartaceo operculo claude, ap  
pone aliud recipientis quod no alliga ad Retorta in  
hoc recipientis delabety Cinnabaris cu parte antsi  
monij cu hoc quogz crudg exhibit mercurig, tunc auge  
igne per s circiter horas (audibis sonu ac si rup  
ta esset retorta quod taen nihil e) apertis duobg

spiraculis deinde per tres horas omnibz quatuor<sup>59</sup>  
apertis in intensissimo calore seruetz frige facto opere  
Cinabarū e collo aufer  
Antimoniū in fundo Retortæ, utile & ad Regulā  
Antionij Componendū  
Butyrū in retorta recipiente concretū, Carbone  
ut frig admoto liquefac ut fundū petat & q̄ crudā  
effunde, deinde pone in arēnā & omnino priori  
modo procede eā recipiendo, Carbone & igne suppres  
sionis. Si nodū puritas butyri placeat idē labor  
tertio & quarto repeti potest

### Cinnabaris & Butyro Antion

 Cinnabaris in recipiente & retortæ collo colligitz  
& crudg quantū possibile separatz cinnabaris tum in  
gricas teritiz in ditiz in cucurbitulā additiz vel sup  
ponitiz alia cucurbitula detz ignis mediocris, pos  
tea fortior subliabitiz & crudg quē ut inutile au  
fer cinnabarū rurſq̄ tere & priori modo sublie idque  
repete donec Cinnabaris rubeg fiat



Mercurij vitæ

Bafyrū hoc Antimonij vitro in aqua calida in  
misce solue & in cucurbita Aqu pluuiali desstillata semi  
plena sensim funde & statim fundū petet coagula  
album agiteur singulis horas postea cū horas 12 ste  
terit aqua hanc per filtrū funde in alia cucurbita  
& reserua: Coagula albo rurſq affunde aqua plui  
ale calida, stet per 12 horas ita faen & singulis horis  
moueat & cū materia subſedit tū rurſq aqua per  
filtrū effunde & cū priore serua. Hunc labore repe  
te donec nulla ſaleidine vel acredine in aqua depre  
hedas quare post hoc ſignū ad huc ter vel quater  
noua aqua re affundere poteris ut tato certior ſies  
cū vltio aqua effuderis tū materia in eodē vitro ex  
ſicca

Mercurij vitæ Rubeg

Aqua hanc onem a coagulo effusa infunde in cucurbita, si onis una vice infundi non potest tu infunde quantum potes ne tamen cucurbita ultra dimidium impleatur pone in Cineres impone Alebicum & receptaculum leni igne destillet per legam quod inutile effunde & aliam aquam adhuc superstitem reliquam in cucurbita affunde & sensim destilla, per legam onem abijce cum vero guttae acide veniunt tum onem quod in cucurbita residuum effunde in retortam & leni calore destilla.

Flores Antionij Correcti

℞ galāga Moscates cariofil, Conaomi maceris  
an  $\frac{3}{4}$  Croci  $\frac{3}{4}$ ij Hiscē Aroatis excepto Croco  
grosso stufis affunde spi vini nō plane rectificatū  
digerat in cineribz donec tinctū sit spi vini. hūc  
tinctū filtra & novū vini spi affunde tinctū rur  
sq ad aliū iam tinctū & filtrabū per filtrū fūde hūc  
labore repete donec amplig nō trigit. cū integro  
croco similiter procede tincturā hanc ex croco af  
funde priori tincturæ

℞ flores Antionij albos vel Rubros puluerisatos quos  
in maror calido cū sale tartari aceto impregnati  
tere, tritū hanc materiā deinde funde in crucibu  
lū, pone in igne circularē, liquecat materiā super  
pone lapidē cū liquore persentis tū aufer lapidem  
& statim (si enim diutig steterit in feruore penetrabit  
vel perfluit materia) funde in mortariā æneā calidū  
si enim frigidū fuerit mortariū materia dissiliet.  
postea exire & super maror tere in puluere impalpabi  
lēm funde in cucurbitū mediocris capacitatis, quæ eti  
am sit calida, supfunde tincturā & leniter digere do

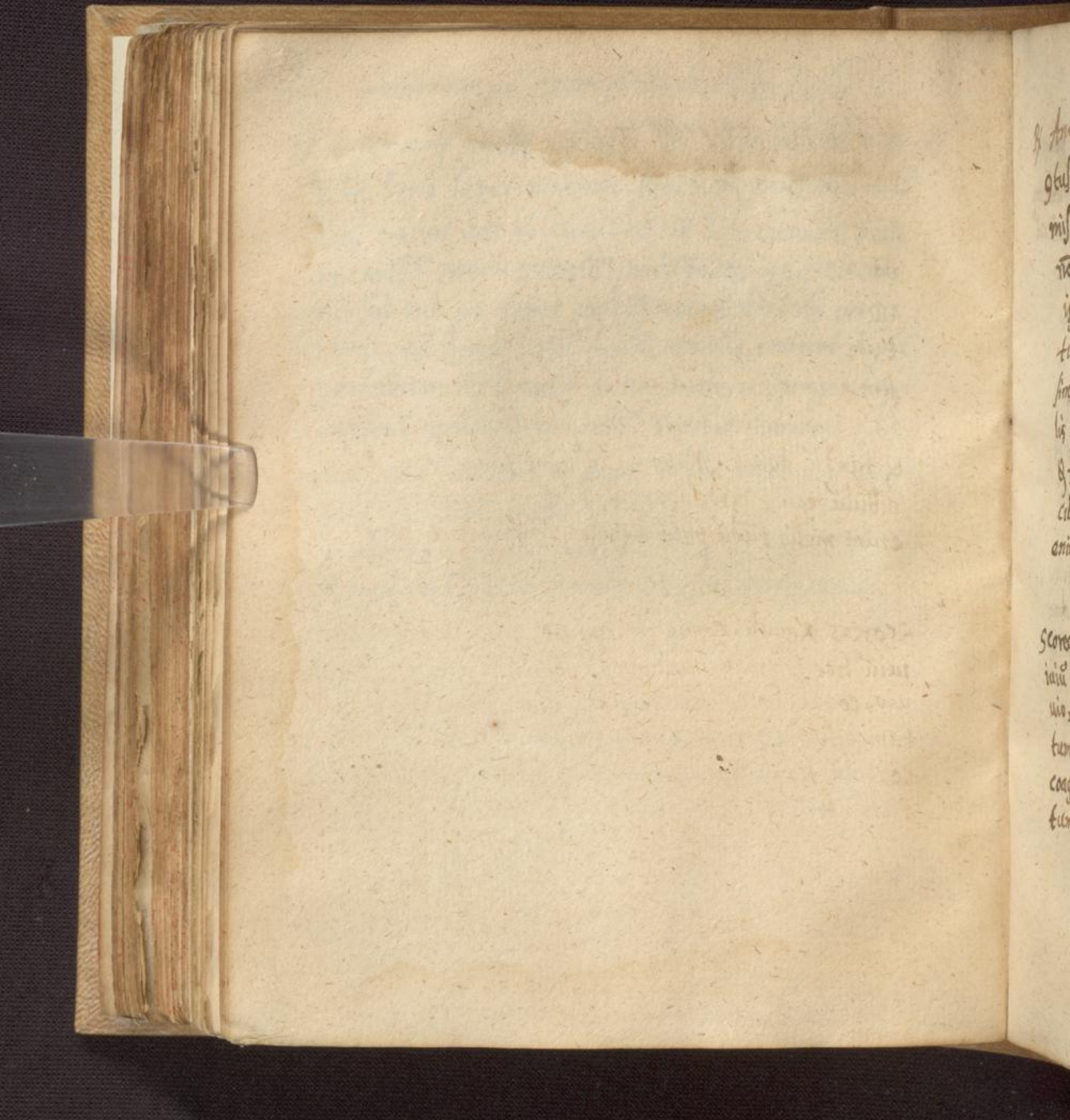
desileet Spir vini ad siccitate, postea in calida 62  
vitru fundaty & bene claudaty

Antimoniū purgans tantū ꝑ secessū

ꝛ Antimonij optie cribrati ꝛij salis vitrioli e  
ꝛ iij bene super marmor teraty ꝛ gmisceaty infu  
daty puluis hic in cucurbitula luto obducta poaty  
in capella arena referta circu poaty ignis circula  
ris sub die ne uapor malignꝝ noceat stet ita per 12  
horas, vel donec nullū fumū amplig emittat signū  
perfectionis ꝛ si paulū de hac materia spergas super  
carbonē ignitū ꝛ tum nullū emittat fumum  
tum exie materia ꝛ Aqua calida edulcora donec  
nullā salledinē amplig reperies  
Demde tere cū sale materia hanc exsiccatā (ad eluē  
dū Antimonia) postreō ꝛ vel ꝛ cū Aq pluiali edulcora

62

182



8. An  
geu  
mit  
na  
i  
t  
fin  
lis  
g  
cl  
ani  
  
Scoro  
iain  
uo  
tu  
co  
tu

℞ Antimonij cribrati tartari cribra an ℥v nitri  
 ꝑtuli ℥ijß Antimonij & tartarū probe miscēatū  
 mixtura inde in Crucibulū liqueſcat, ſi liqueſcere  
 nō vult parū adyccē nitri & tege Crucibulū auge  
 ignē (circulare nempe) cū vides materiā liqueſcere  
 tum auge ignē & per vices aſperge nitrū parū quod  
 ſimul liqueſcere facit materiā & Regulū ſeparat, virga  
 liſ quogz materiā agita qua faciūt ut Regulū depellat  
 & fundū petat. Materiā dū bene fluere vides dū cru  
 cibulū exime & id ſuperig & ad latera baculo verbera ſic  
 enim meliꝯ fundū petit Regulū quē frigefacto opere ſerua

## Sulphur Auratum

Scoreas Reguli coque in lixiuis gummi ſed forti, lix  
 iuiū hoc filtra & quod nondū ſolutū ē affuſo alio lixi  
 uio, coque, hocqz repete dōec onē ſolutū ſit huic  
 tum affunde ꝑ vices 3 vel 4 parū aceti & fundū petet  
 coagulū flauū quod poſtea ſicca & edulcora, edulcora  
 tum iterū ſicca



℞ ♀ ℥ iij Salis decrepitati ℥ iij ♂ ad flauē  
dine calcinati ℥ viij Nitri ℥ β irroretur paululo  
aceti & gūdatur donec ♀ nō amplig appareat Massa  
hanc funde in Cucurbita Capace ut dimidiū fere  
venter impleatur tū baculo inmisso materia distrahē  
ut plana iaceat. Labor peragitur igne aperto deinde  
singulis horis igne subiee & fornace vndiquaque  
claudē, ut destillat p̄legā, quod dum fere destil  
lasse videtur (fit hoc 24 horis) tum appone aliud re  
cipiens in quod forte parū cadet subliati auge  
igne donec nihil amplig destillet (videbis subliā  
fū igne albu in capite & cucurbita)

Destillato om̄i p̄legate augeatur ignis duob; ve  
tilib; apertis per 2. 3 vel 4 horas. postea apertis  
om̄ib; ventilib; incādescat cucurbita per duas horas  
(nos mercuriū flauū vidig. aliās nigricas solēt esse)  
postea refrigescat & fracto vitro accipig ♀ Al  
bissimū ita ut necesse nō fuerit eū amplig subli  
mare. si uero nō satis alby fuerit tū eū rursus

184

tere & adde dimidiū priorū ut salis decrepitati  
tō ij & calcinati tō iij Nitri ℥ iij gisceat̃ irro  
rent̃ & sublimēt̃ ut prig quod si nec secunda vi  
ce albedo placeat tum rursū subliato adijunge di  
midiū priorū salis decrepitati tō i & calcinati  
tō ij Nitri ℥ ij gisceat̃ irrorent̃ & subliēt̃ ut prig

### Spiritus salis Fornax secunda

℞ salis Hispanici tō iij Argillæ tē ij dispoat̃  
in mensa argilla intra mang bene distenta super  
spargit̃ & impastat̃ sal, fiāt hinc globuli quæ  
siccēt̃ in Aere injeiant̃ in Retortā Waldeburgē  
sem ut tertia eiq pars vacua maneat. Destillatio  
sit igne aperto per horas 24 da ignē lenē si  
uero spiritus videas cinericios delabi tū ignē  
fortiter per horas 20 vel 24 donec recipies  
pellucidū fiat. vnaquæque libra requirit ignē  
forte per 5 vel 6 horas, si uero recipies nō adeo  
magnum sit lintis madid̃ antequā incalēscat in

℞ Antimonij cribrati tartari cribra an ℥v nitri  
 ꝑtuli ℥ijß Antimonij & tartarū probe miscēatū  
 mixtura inde in Crucibulū liqueſcat, ſi liqueſcere  
 nō vult parū adyccē nitri & tege Crucibulū auge  
 ignē (circulare nempe) cū vides materiā liqueſcere  
 tum auge ignē & per vices aſperge nitrū parū quod  
 ſimul liqueſcere facit materiā & Regulū ſeparat, virga  
 liſ quogz materiā agita qua faciūt ut Regulū depellat  
 & fundū petat. Materiā dū bene fluere vides dū cru  
 cibulū exime & id ſuperig & ad latera baculo verbera ſic  
 enim meliꝰ fundū petit Regulū quē frigefacto opere ſerua

## Sulphur Auratum

Scoreas Reguli coque in lixiuis gummi ſed forti, lix  
 iuiū hoc filtra & quod nondū ſolutū ē affuſo alio lixi  
 uio, coque, hocqz repete dōec onē ſolutū ſit huic  
 tum affunde ꝑ vices 3 vel 4 parū aceti & fundū petet  
 coagulū flauū quod poſtea ſicca & edulcora, edulcora  
 tum iterū ſicca

oleum sulphuris per Campanā

linthea fila sulphure obducta duo vel tria pone in  
crucibulū supersperge sulphur puluerisatū ut fere im-  
pleatx Crucibulū super quod suspensū tene Alebicum cū  
recipiente & fila accende Accipies oleū seu spirū sulphu

Aqua opstbalmica e Cicorjō

Collige Flores Cicorj in vitrū oris angustū &  
singulis nempe dieby collige, circa meridiē donec  
vitrū impleatx

quādo vitrū impletū & tum operculo ligneo  
bene claude & farina subactā illi circūuolue  
crassitie duorū digitorū & cū reliquis panibz  
in furnū mittatx simulqz cū illis extrahatx, tū  
 rumpe vitrū & materia in illo gēntā funde in  
 cucurbitā ex illa lento calore per cineres destilla  
 aquā quā reserua, Caput mortuū siue feces abice

tere & adde dimidiū priorū ut salis decrepitati  
tō ij & calcinati tō iij Nitri ℥ iij gisceat̃ irro  
rent̃ & sublimēt̃ ut prig quod si nec secunda vi  
ce albedo placeat tum rursū subliato adijunge di  
midiū priorū salis decrepitati tō i & calcinati  
tō ij Nitri ℥ ij gisceat̃ irrorent̃ & subliēt̃ ut prig

### Spiritus salis Fornax secunda

℞ salis Hispanici tō iij Argillæ tē ij dispoat̃  
in mensa argilla intra mang bene distenta super  
spargit̃ & impastat̃ sal, fiāt hinc globuli quæ  
siccēt̃ in Aere injeiant̃ in Retortā Waldeburgē  
sem ut tertia eiq pars vacua maneat. Destillatio  
sit igne aperto per horas 24 da ignē lenē si  
uero spiritus videas cinericios delabi tū ignē  
fortiter per horas 20 vel 24 donec recipies  
pellucidū fiat. vnaquæque libra requirit ignē  
forte per 5 vel 6 horas, si uero recipies nō adeo  
magnū sit linteis madid̃ antequā incalēscat in

positis & semp aq frigida aspersis illud seruare 65  
poteris


Spiritus Nitri

Eodem modo paraty sed hic spiritus protrudat rubei  
& libra Nitri igne 4 horarū requirit

Spiritus vitrioli

Vitriolū calcinatū grosse glutu funde in Retor  
tā terrea bene lutatā tertia pars maneat uacua  
da igne prio lenē donec p̄lega abijt deinde auge  
igne & dū spiritus videt in eadē calore semper  
serua ne spiritus desinat quod si forte fieret ig  
nis reberentior supponedg esset. Ignē hunc  
in eodē calore serua donec recipiens claresce  
re adverteb̄ cum frigescat

oleū vitrioli Fornax 2

Caput mortuū residuū e  glande inde in  
Retortā terrea cuius collū terra spectat maxime  
ut oleū eo facily destillare possit subterne ignē

vehementissimū per dies 2 vel 3 donec nullos  
spiritus oleaginosos nec ullas guttas decedentes uideas  
(spiritus hi oleaginosi eodem modo egrediuntur quo spiritus egresse)

### Sal vitrioli

Et caput mortuum Residuum ex ol. Superfunde  
huic Aquā calidā baculo agita, quando materia  
subsedit tū Aquā effunde & filtra capiti mortuo  
nouā aquā affunde idq; repete donec nullā Aeri  
monia in Aqua reperies filtratas hasce Aquas in  
cucurbita pone in Arenam vel cineres ut euaporet  
manebit in fundo Sal. O

### Spiritus Tartari Torax 2

Tartarū grosse stusū inde in Retortā Walburgē  
ferenda igne graduato priō lenē sed quādo spiritus  
prorūpentes uidebis tam paulū auge ignē & in eodē calore

66  
Serua, si enim paulū remittes de calore nullos spiritus  
accipies & si nimis intendas calore tum liquecet mate-  
ria & similiter nihil accipies. spiritus admodū penetrat  
& male folet quā diligenter etiā lutaueris, oleū una cum  
spiritibus destillabit, signū perfectionis ē quādo spiritus reuertat.

ol ☐ per deliquium

☉ ex hoc Tartaro residuū pone in dimidiā uel  
in duas partes dissectā cucurbitā pone in locū frigi-  
dū ut anterior pars cucurbitae paulū declinet sup:  
pone aliud vitrū in quod destillare possit soluetur  
forte intra mense & destillet oleū pellucidū

ol ☐ per Manicā

Supra caput mortuū ☐ funde aquā calidā extrahere  
sal ut in sale ☉ factū ē demide euaporet donec instar  
lixiuū fiat & hoc dicitur oleū per manicā



Flores Antimonij Fornax XI

Rx Antimonij optime Exibrati lbj Arena Cribrata  
~~lbj~~ vi misce & funde in cucurbita terrea lutatam  
appone cucurbita satis capace, prio subyce igne lenē  
per 24 horas ita ut fornax vbiqz clausa sit donec  
videas albos flores in superficie recipientis, tu aufer  
ha vitru & aliud eiusde magnitudinis in eij locū sub  
stitue (id quod in recipiente prioris e dicitur Acetū an  
timonij hoc si vis serua) colluta cū charta v. moris  
& augeat ignis, operculo semi aperto per horas duo  
decim videbis in superficie albos & flauos flores in  
imo uero parte rubicundos (melius esset si cucurbita val  
deburgēsis haberi posset & ad latq poneretq ut in fornace IV  
apparet hic enim ob colli amplitudinē longe citiq &  
tutiq egrediuntq flores) cautio sit ne retorta frigescat  
nec nimis incalescat & materia liquefcat, quod si accidat, de  
nouo contundenda e. ultio si igne bene attēperaueris  
accipies flores violaceos seu rubro nigricatos in hoc ultio la  
bore Retortae collū nobis fractū

Aliq Labor Fornax IV

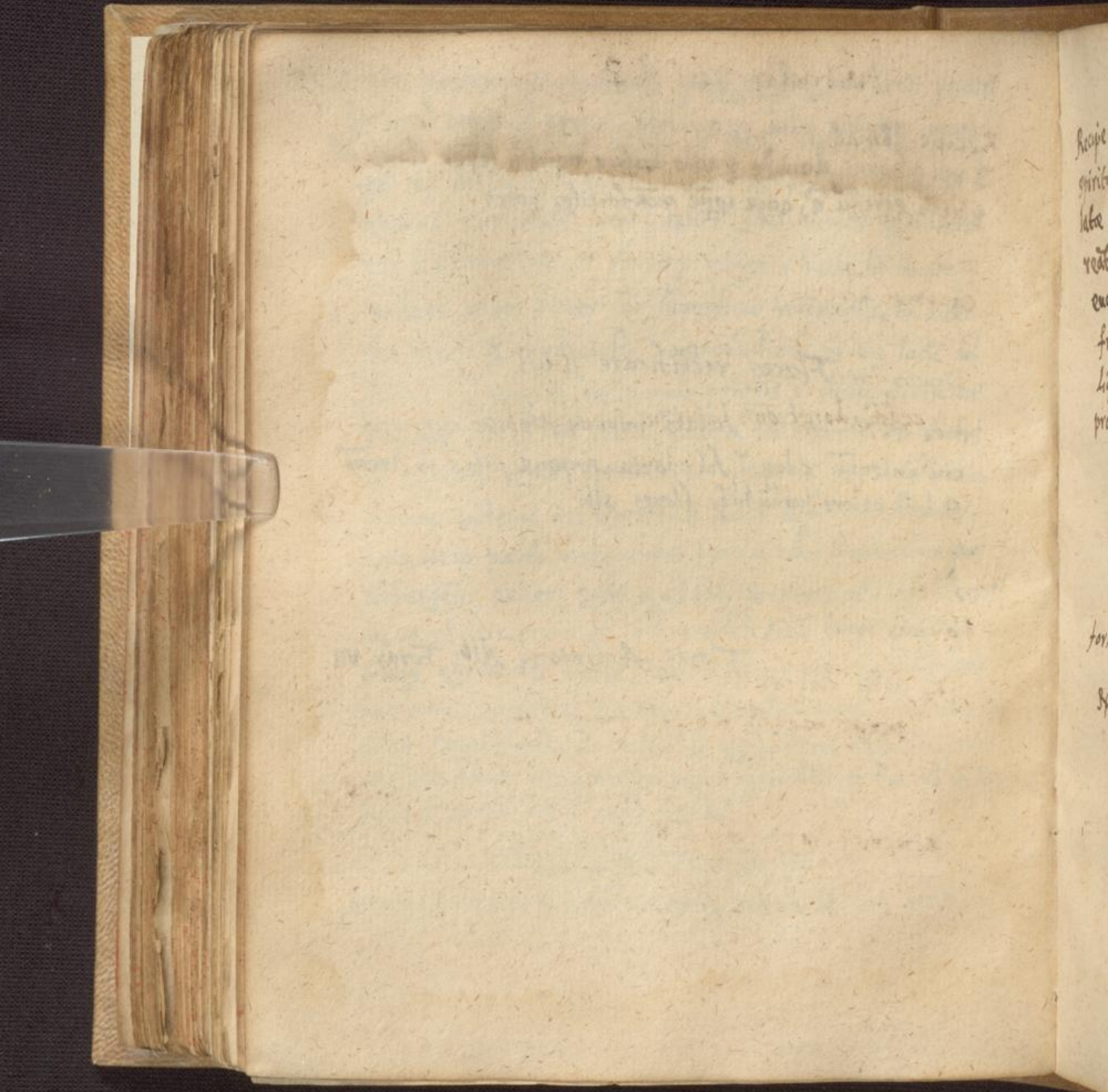
Rx Huic pulueris in fracta Retorta residui lbj cui Antio

monij cribrati adde ℥iij funde in cucurbitam vitrea 67  
lutata appone alia cucurbita supponitur ignis lenis ad  
3 vel 4 horas deinde paulo fortior ventili seper clauso du  
pblega egressu e, auge igne qua fortiter potes

Flores rectificare si vis

inde in cucurbita lutata impone Alebica cuius orifi  
cium internu clausu sit charta, impone vitru in arena  
& leni calore subleuabit flores albi

Flores Antimonij Albi Forax VII



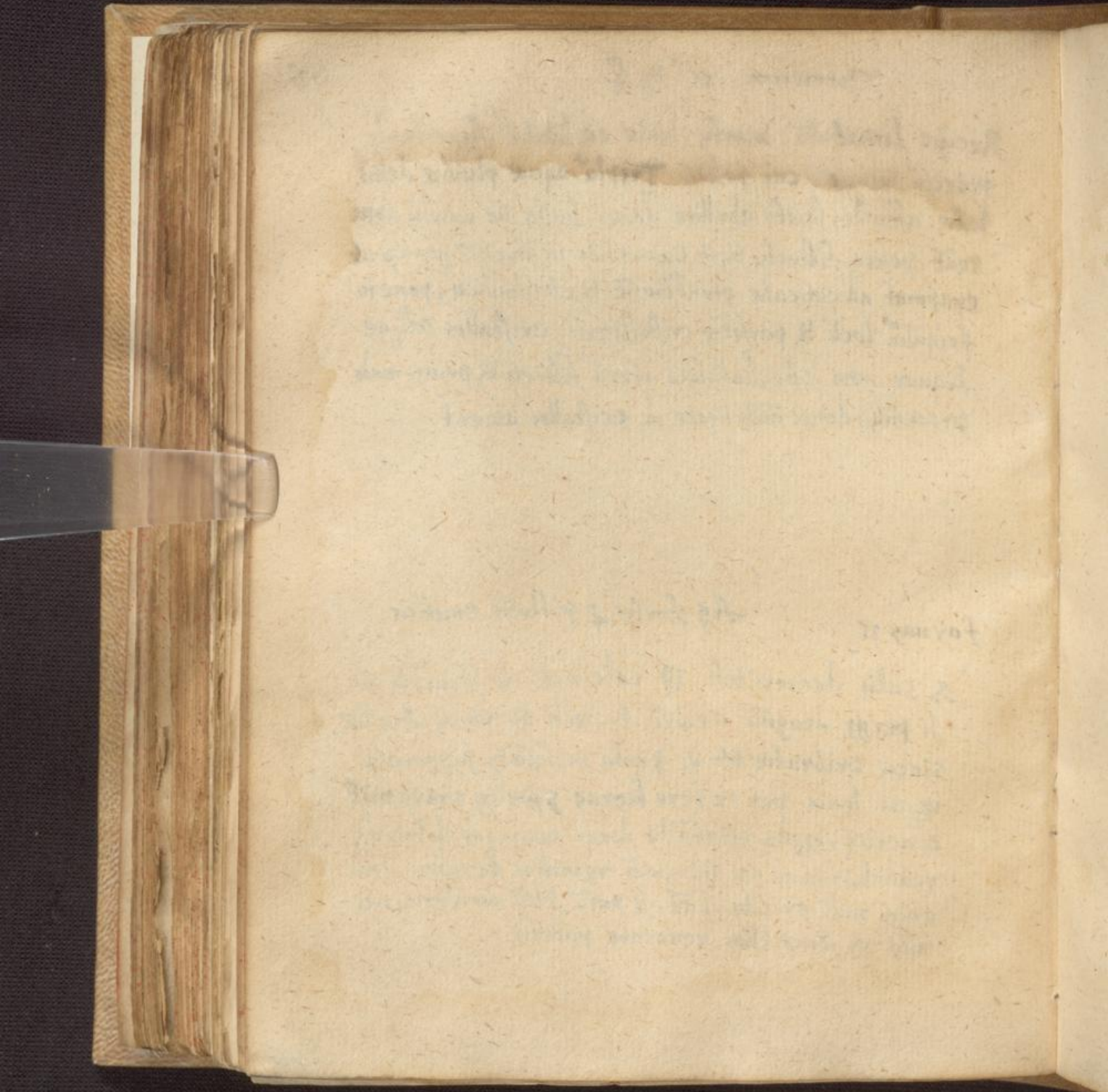
Recipe  
ginn  
late  
reat  
cu  
f  
L  
pr  
  
for  
S

Recipe limatura martis huic ad libitū superfunde  
 spiritū vitrioli cui postea Triplū aquæ pluviæ destil-  
 late affunde, finito ebullire donec bullæ nō amplij appa-  
 reāt postea filtratū & in cucurbita in arena ponatū ut  
 euaporat ad cuticula gtractionē & cristallifcet, pone in  
 frigidū locū & perfectū cristallizet cristallos collige  
 liquor non cristallifctū iterū filtratū & priori modo  
 procedat, donec omnis liquor in cristallos abierit

fornax 11

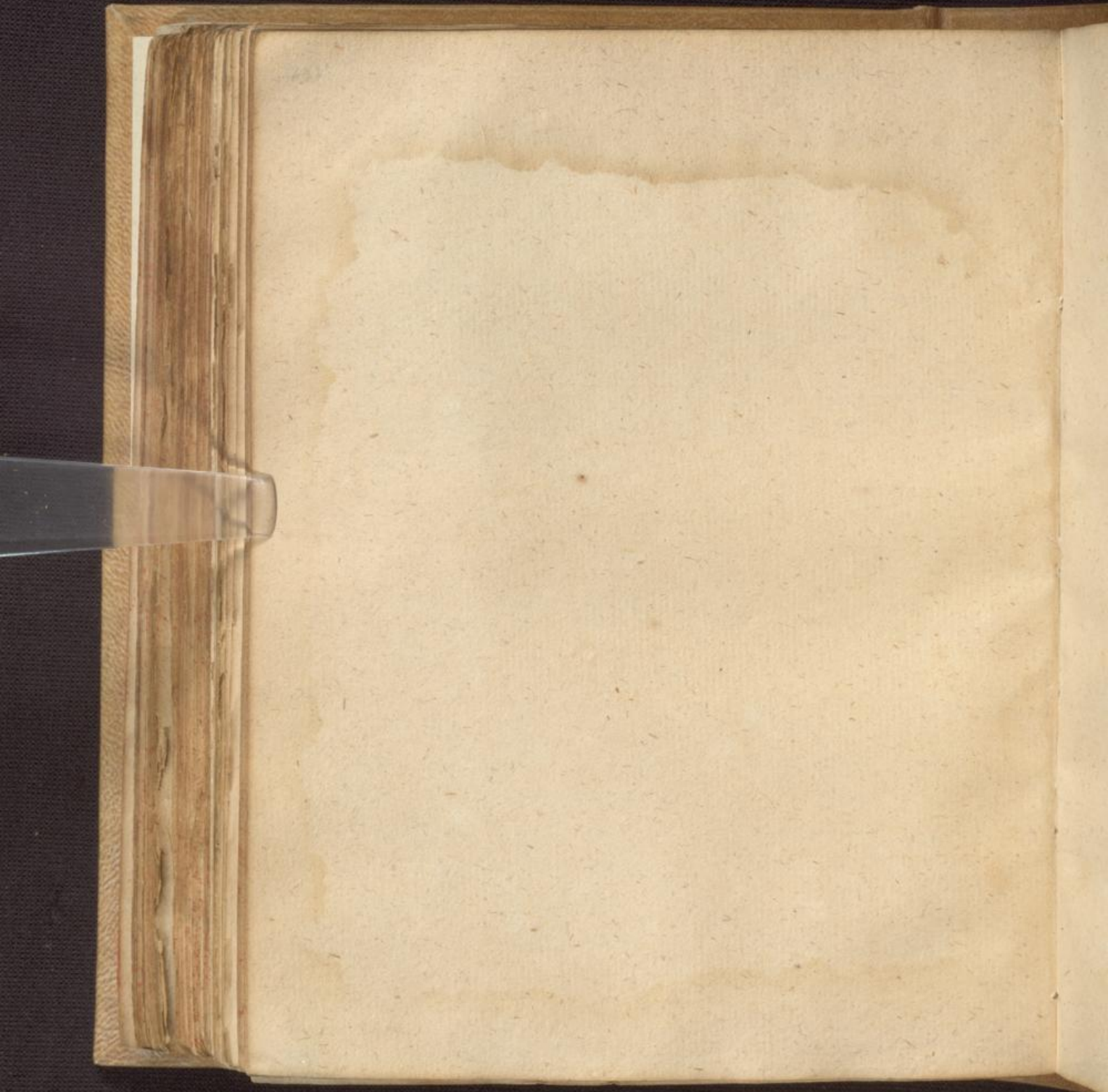
Aq fortis &amp; pillulis emeticis

& salis decrepitati & calcinati ad flaued & gtu  
 si perg3 magnū cribrū traiecti an tab iij Argille  
 sicca cribrate tab vi probe miscerātū supponitū  
 ignis lenis per 12 fere horas spiritū prorūpūt  
 cinericy, ignis glinuādū donec recipiens dilucidū  
 reddatū, caue ne minimū remittas de calore, tum  
 enim nulli spiritū ibat, si parū saltū remiseris, nec  
 ulla vi ignis illos reuocare poteris



69

189



70

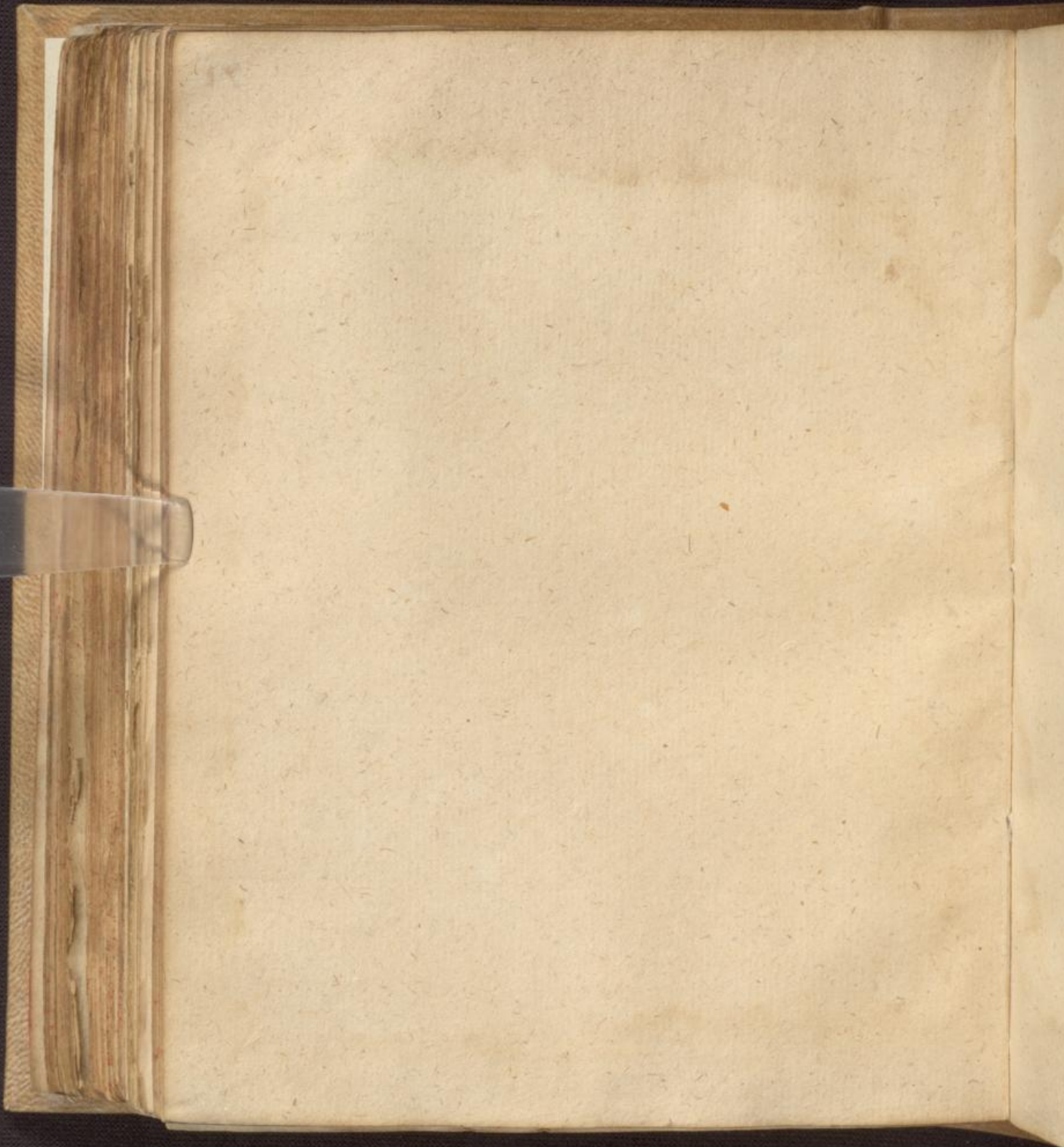
150





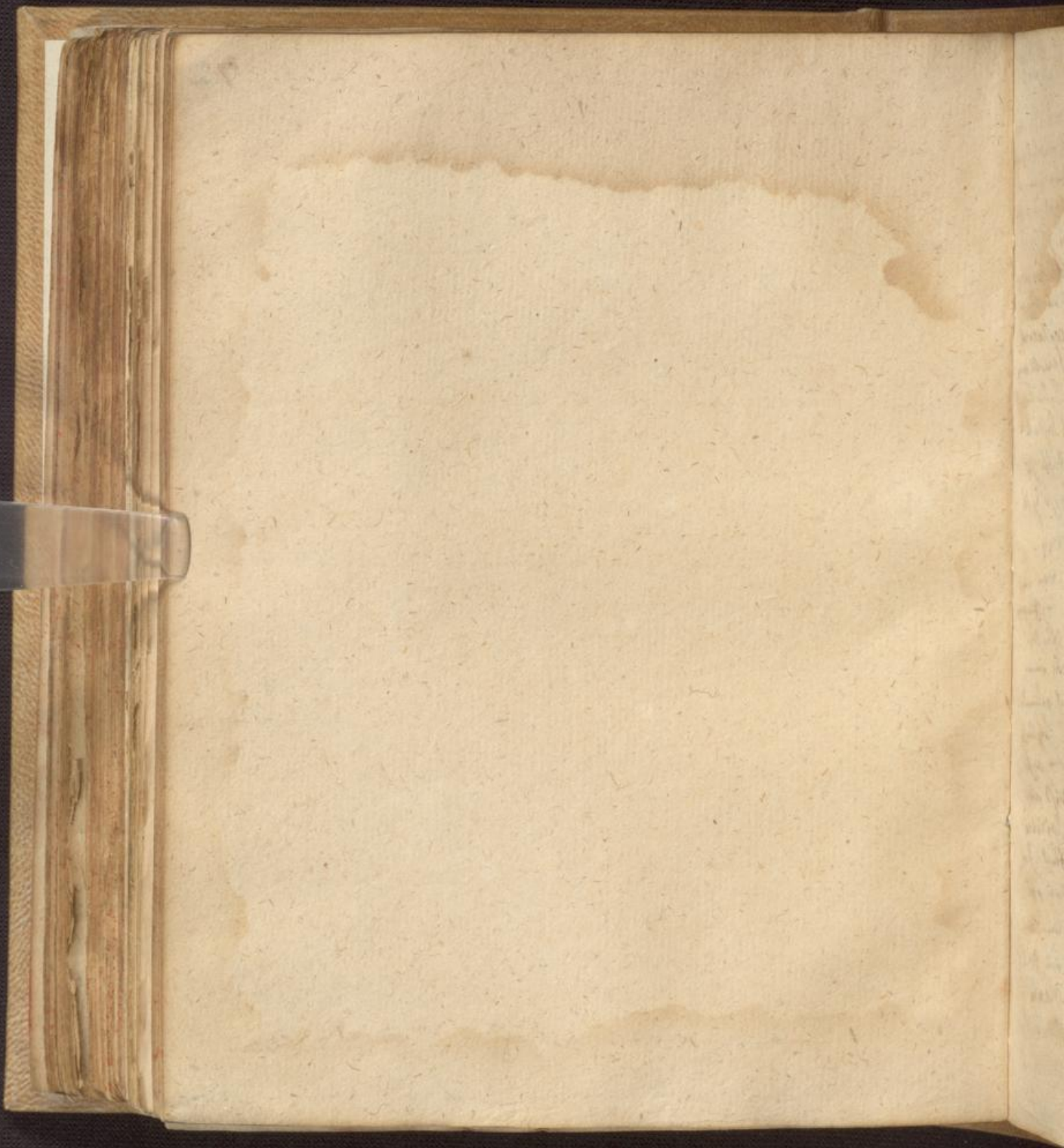
71

191



72

192



*[Faint, mostly illegible handwritten text in a cursive script, possibly German or Latin, covering the majority of the page.]*

Preparatio Antepileptiq

7. Julij. Ao. 1628.  
ab. O. E.

x  
Lupulus solvret may in Spiritu Vini / Weil Salis cornu cervi alle dem  
soluzum will, in galindus Weirum (rost reutts blaualuff, und lufgell  
rotz) Das glass abso mit 2 weill mit Wasen Blauschweiss  
sein, damit nicht außkomme, Das ab seft Spirituali, 18. Weill. Hoc  
facto, Hic fallt 2 Weil Spis cornu cervi als Spis vini in 1/2, und  
wird ab weill Vntersainander, und darauß Huet may gettahn etz  
Spitus vitrioli, nuff Jutrial damit ab nuff ablauf, Das ab begin  
net zu Brausen und weill ebulliren, postq. v. ebullitione, cessant,  
Huet man noch mehr vom Spitu vitrioli; Man kan auch weill ein  
Lupulus, oder abluft Spis ex cranio humano dasi Huet, nach Zerklein  
sumain, und laßet ruindat Vorbrausen, und das so oft by ab  
nuff mehr brausen will, Das maßt may das glass dinst zu  
und laßet ab noch ein tag oder zwey in Digestion ruhen, so ist  
bereit.

Sequitur Preparatio Spis & Salis cornu cervi

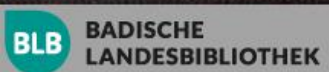
x  
Man laßet das Huet zu clamar, Thiellein sagen, stua zu  
fingerlang, und am finger deckt, Das Huet may in einer beyflagen  
glassen od pinnet, retort, und laßt sie in einer stuf Ofen, da  
man recht pflegt Spis zu Zerklein als O oder Salis cornu, sinas  
recipientes vorgelugt, und distillirt redm gradus anflus galind.  
bey die Spis und das oleum zu kommen, stuaad per hoc, laßet  
vorher bey die Spis und das rotze oleum tollend fürüber gahen,  
Das Saltz wird auß in die hollay fürumb gar sein, Weis an  
satzon; Das Saltz ist gar flüchtig und weilt mit dem Spitu  
gebraucht, wie vor gedacht. Das Spis ist auch traßlich zu  
unserm Zerklein, wean man Zerklein Vorwindet, das er  
blüß stiet, saltz nuff das particularer ein fürlufz Winden  
transc. sey, Dem Ist an abluft desperatus probiret, nie fallt  
Lupulus Vell in 2. Johannit cranil weiser. Das oleum ist  
ein kostlich Gut, 18. Trieff. in 2. daiten, etz oder ander  
guten Weintz ringegabon, und damit 2. Stundt zoffschet.

Applicatio et Ufus.

So farnu mir der paroxysm off oder Mareh ankommen Morgens  
 und Abends quodidie miß gebraucht werden, Ingleich auf die  
 Weis, wenn der morbus inveteriret, ob gleich der paroxysm so stark  
 wußt ist, miß adhibiret wird. Ist aber das droß Krauchheil nicht  
 so guttes sondern erst ein Djerindal, so kan man auch das  
 das oder täglich der Morgens allam nitratum in Syllage oder  
 guttes Wein, oder miß das weoll bruchst, die referenda materia  
 aber miß hinc inde in vitro manib. moviret und agitiret werden,  
 und das farnu dem patienten appliciret. Für die Kinder  
 sam 9 oder 10 tröpflein genung in ein halb Römisch weoll Syllage  
 oder Lillienconwallen. Man nimet aber Zersaß oder Vollen kommen  
 Man d' Weill Zersaß 17. oder 18 tröpflein in gewalttem Wasser d' Wein,  
 weoll Viteraminandros mischret, als das ob sein fard oder d' Syllage  
 farnu, Morgens und Abends nach dem die Krauchheil ist, auch  
 man Weill oder Vermulet das die Krauchheil an kommen, als  
 ad ministreret.

Preparatio Elixirij

Man nimet weill der besten Alöe die sein duhrstuchig und  
 Braunrottblut, und Alexandrische Mirren ana 8 lotz Croc orient.  
 ana 4 lotz. In crocum schiet man weill in ein höllhuy, darnach  
 die andere beide Juroer Wein gessoßn und Laomi/Got, oben darmit  
 und humectiret mit correcto spiritu vini et fiat q. massa, das  
 man als tag und Nacht rasen. Darnach gairret man darmit  
 Vitrioli et Salis Spiritu ana und so man will auf stein  
 Spiritus, das schiet man in digestion 8 tag lang, darnach schiet  
 man dasel extractis Centaurae, so schiet man die andere  
 der Holben rasen, so schiet man das extracti d' Intra  
 in digestion rasen lassen. Man darnach per  
 Inclinationem schiet





abgossen und wiederum Spritzenwein darauf gegoßen, und  
wirdt ein tag oder 8 tagen lang, darmit separiret, und zu  
der Weingeist so man abgoss gaffay, die die felle geist  
man ein gutt amiat Wasser das leyet man auf 2 oder 3  
tag darmit ab, darmit wirdt sein schiffel per Inclina  
tionem abgoss und zu der andern gaffay. Die felle so  
restiren laigert nicht mehr, die weiff man weg.

R. 20070-400...  
K... ist...

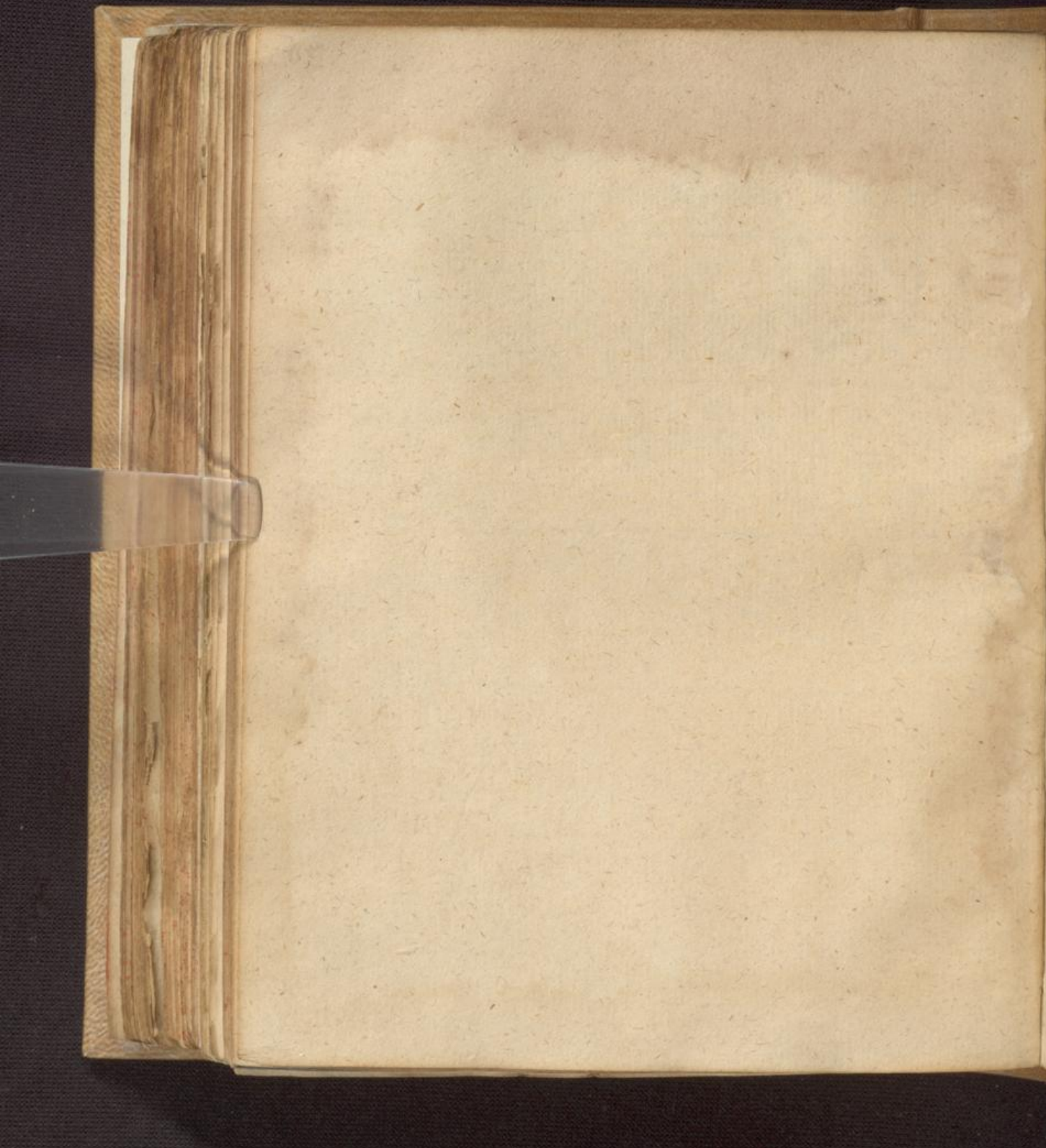
R. 20070-400...  
dellon ist, 20070...  
w... quanton...

R. Materie nota partes g. Hii in in am  
Unam o... superinfunde ad humectationem saltem ana  
30...  
fals aber miss die...  
Vielein...  
g...  
am Tag der...  
20070...



56

156



Handwritten text in a cursive script, likely a manuscript or letter, visible on the right edge of the page. The text is partially obscured by the binding and the clip.