

Badische Landesbibliothek Karlsruhe

Digitale Sammlung der Badischen Landesbibliothek Karlsruhe

Roß Arznei Buchlein - Cod. Ettenheim-Münster 47

Lauremberg, Peter

1601-1615

Flores Antimonii

[urn:nbn:de:bsz:31-97465](https://nbn-resolving.org/urn:nbn:de:bsz:31-97465)

Flores Antimonij Fornax XI

℞ Antimonij optime Exibrati lb̄ ij Arena Cribrata
~~lb̄ vi~~ misce & funde in cucurbita terrea lutatam
appone cucurbita satis capace, prio subyce igne lenē
per 24 horas ita ut fornax vbiqz clausa sit donec
videas albos flores in superficie recipientis, tu aufer
ha vitru & aliud eiusde magnitudinis in eij locū sub
stitue (id quod in recipiente prioris ē dicitur Acetū an
timonij hoc si vis serua) colluta cū charta v̄ moris
ē augeatqz ignis, operculo semi aperto per horas duo
decim videbis in superficie albos & flauos flores in
imo uero parte rubicundos (melius esset si cucurbita val
deburgēsis haberi posset & ad latqz poneretqz ut in fornace IV
apparet hic enim ob colli amplitudinē longe citiqz
tutiqz egrediuntqz flores) cautio sit ne retorta frigescat
nec nimis incalescat & materia liquefcat, quod si accidat, de
nouo contundenda ē. ultio si igne bene attēperaueris
accipies flores violaceos seu rubro nigricatos in hoc ultio la
bore Retortae collū nobis fractū

Aliq Labor Fornax IV

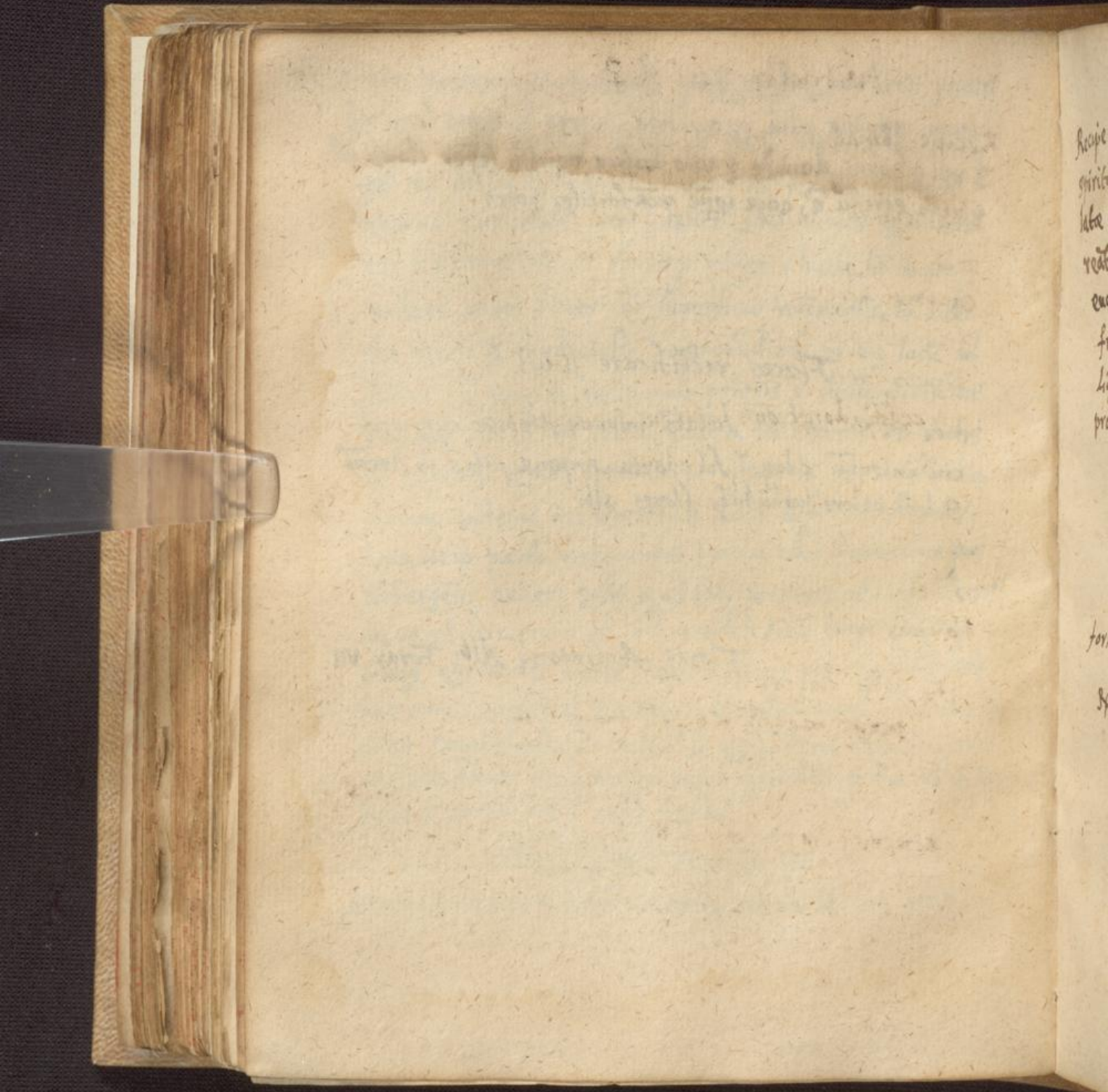
℞ Huic pulueris in fracta Retorta residui lb̄ i cui Antio

monij cribrati adde ℥iij funde in cucurbitam vitrea 67
lutata appone alia cucurbita supponitur ignis lenis ad
3 vel 4 horas deinde paulo fortior ventili seper clauso du
pblega egressu e, auge igne qua fortiter potes

Flores rectificare si vis

inde in cucurbita lutata impone Alebica cuius orifi
cium internu clausu sit charta, impone vitru in arena
& leni calore subleuabit flores albi

Flores Antimonij Albi Forax VII



Recipe
ginn
late
reat
cu
f
L
pr

for
S

Recipe limatura martis huic ad libitū Superfunde
 spiritū vitrioli cui postea Triplū aquæ pluviæ destil-
 late affunde, finito ebullire donec bullæ nō amplij appa-
 reāt postea filtratū & in cucurbita in arena ponatū ut
 euaporat ad cuticula gtractionē & cristallifcet, pone in
 frigidū locū & perfectū cristallizet cristallos collige
 liquor non cristallifctū iterū filtratū & priori modo
 procedat, donec om̄s liquor in cristallos abierit

fornax 11

Aq fortis & pillulis emeticis

& salis decrepitati & calcinati ad flaued & gtu
 si perg3 magnū cribrū traiecti an̄ tab iij Argille
 sicca cribrate tab vi probe miscerātū supponitū
 ignis lenis per 12 fere horas spiritū prorūpūt
 cinericy, ignis glinuatū donec recipiens dilucidū
 reddatū, caue ne minimū remittas de calore, tum
 enim nulli spiritū ibat, si parū saltū remiseris, nec
 ulla vi ignis illos reuocare poteris