

Badische Landesbibliothek Karlsruhe

Digitale Sammlung der Badischen Landesbibliothek Karlsruhe

Aesop in Lydien. Excerpts - Don Mus.Ms. 1115|b

Kreutzer, Conradin

[S.l.], 1820 (1820c)

Agenor

urn:nbn:de:bsz:31-98150

~~3^{tes} Act. Proscenium~~ 3^{tes} Act. Proscenium. ~~3^{tes} Act. Proscenium~~ ~~3^{tes} Act. Proscenium~~

Allegro con brio.

Musical staff with treble clef, key signature of one flat, and common time signature. The staff contains a few notes and rests, with a measure number '23' written above.

Agnus. Dijsuaa siwaiza!

Musical staff with treble clef, key signature of one flat, and common time signature. The staff contains a few notes and rests, with a measure number '24' written above.

galtat nie galtat nie!

Musical staff with treble clef, key signature of one flat, and common time signature. The staff contains a few notes and rests, with a measure number '10' written above.

Allegro maestoso.

Insouyr! is ba

Musical staff with treble clef, key signature of one flat, and common time signature. The staff contains a few notes and rests, with a measure number '3' written above.

sull no vie. Ding dirso auythlyr ba

Musical staff with treble clef, key signature of one flat, and common time signature. The staff contains a few notes and rests, with a measure number '4' written above.

inubau maunfant inua inu Druaist,

Musical staff with treble clef, key signature of one flat, and common time signature. The staff contains a few notes and rests.

dirso auythlyr in burtubau maunfant

Musical staff with treble clef, key signature of one flat, and common time signature. The staff contains a few notes and rests.

inua inu Druaist maunfant inua

zu Ansoz. Recit:

Musical staff with treble clef, key signature of one flat, and common time signature. The staff contains a few notes and rests.

inu Druaist, is lovan

Musical staff with treble clef, key signature of one flat, and common time signature. The staff contains a few notes and rests, with a measure number '12' written above.

Pr. Alto

zriizer Dista inu. Miß is dirso

Musical staff with treble clef, key signature of one flat, and common time signature. The staff contains a few notes and rests.

noch - no - saunne Ansoz blinbau Pflichtuist

J.S.

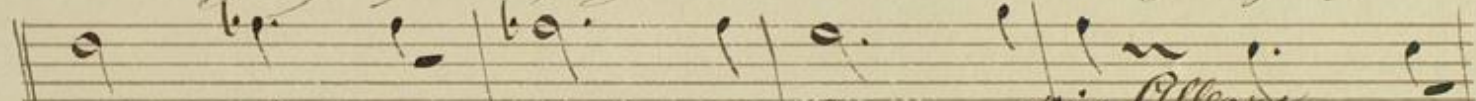
2
 lanu. Nichts kann ich von
 Haaf bewahren kriem bitten
 geistliche sang geistliche sang kriem
 bitten geistliche sang geistliche sang
 geist ich - sang, kriem bitten geistliche
 sang nichts kann ich von Haaf ich von Haaf be-
 wahren, nichts kann ich von Haaf
 nichts von Haaf bewahren kriem bitten
 geistliche sang geistliche sang geistliche
 sang, nichts kann ich von Haaf bewahren V.S.



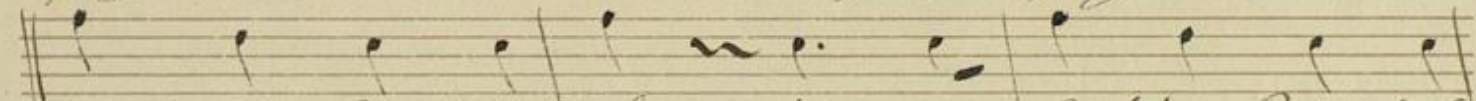
nicht zu sein von Hand beweis - eine Prien



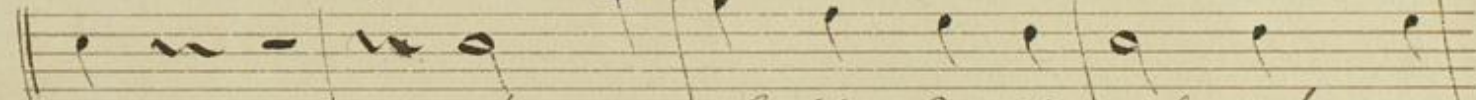
bitter-süßliche sang Prien bitter süßliche



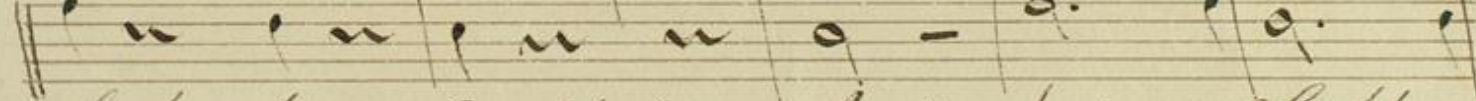
sang Prien bit-ter süßliche sang Prien



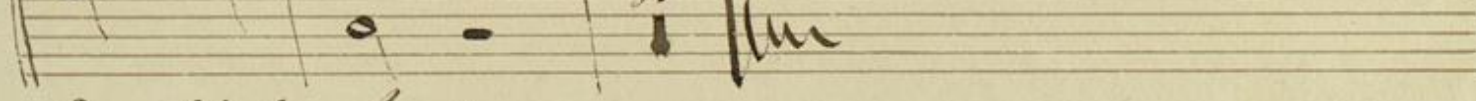
bitter süßliche sang Prien bitter süßliche



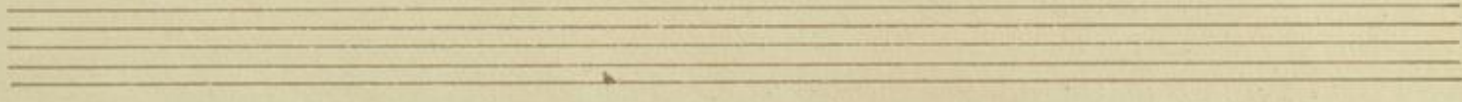
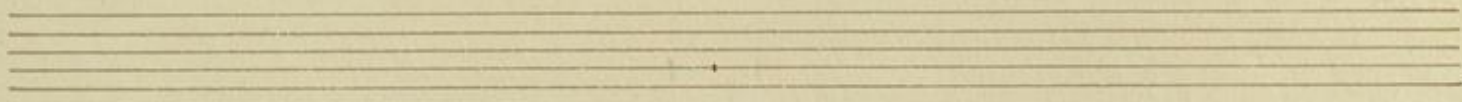
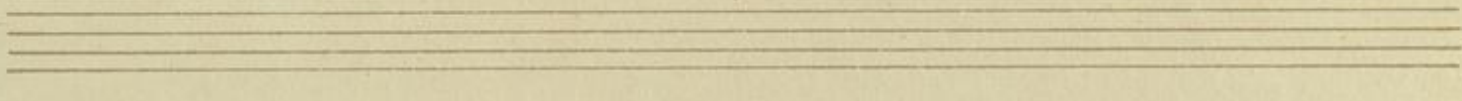
sang, Prien bitter süßliche sang Prien



bit-ter süßliche sang, Prien bitter



süßliche sang. -



Blank musical manuscript paper with ten systems of five-line staves.

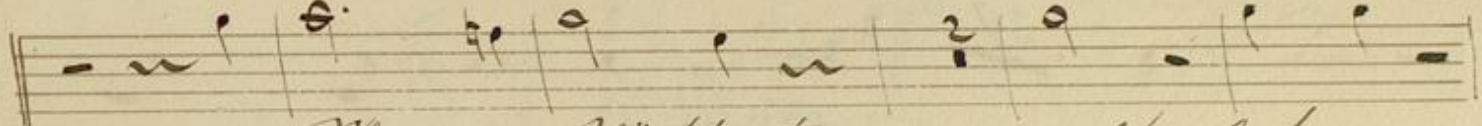
No. 9. Agonien. 3^{te} Abt. Instituto. Agenor aus Bayern. 1

Allegro con brio.

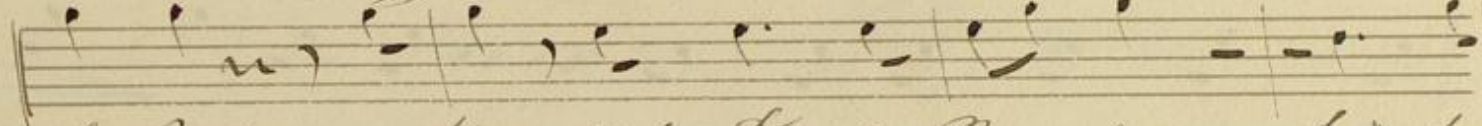
22 21



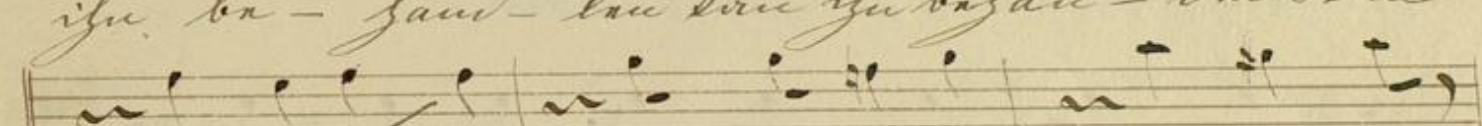
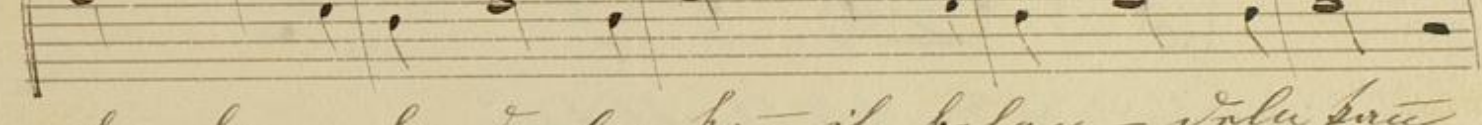
Leisere Stimmen fallet mir fallet mir mein büßes bleibt



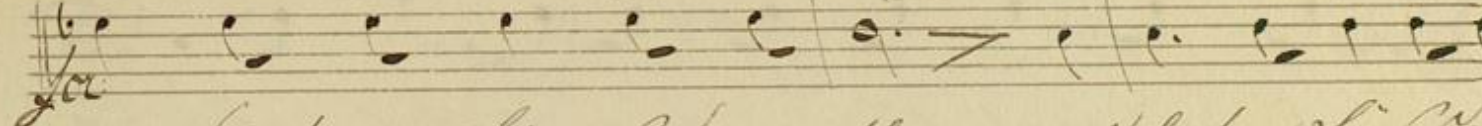
von Jesus zuführt, was hat er



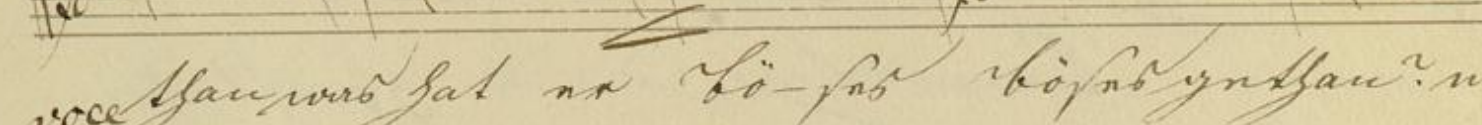
hörs gott was das da ya ka nen



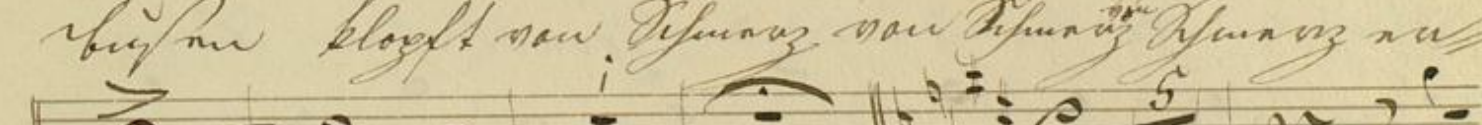
ich be haut an sein ich be haut in de sein



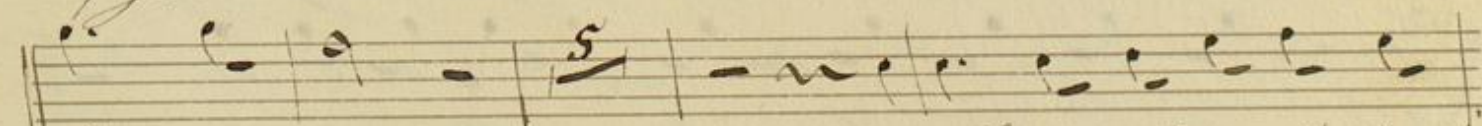
mein büßes bleibt von Jesus zuführt



was hat er hö rs g ott was hat er hö rs g ott



was hat er hö rs g ott was hat er hö rs g ott mein



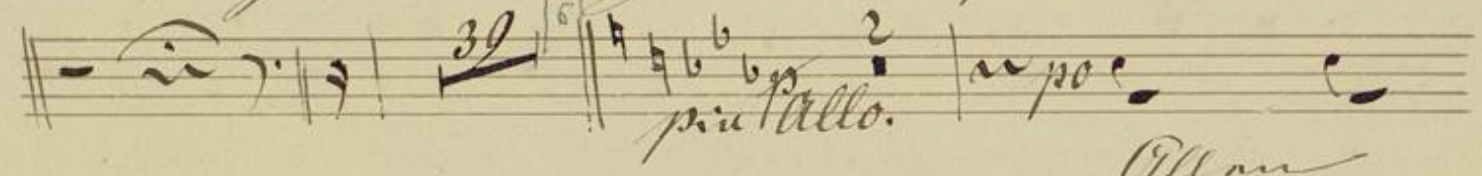
büßes bleibt von Jesus zuführt von Jesus zuführt zu



führt. *Allo. maestoso.* Ein
 König ruft! Mein König Jo an me in
V. G.

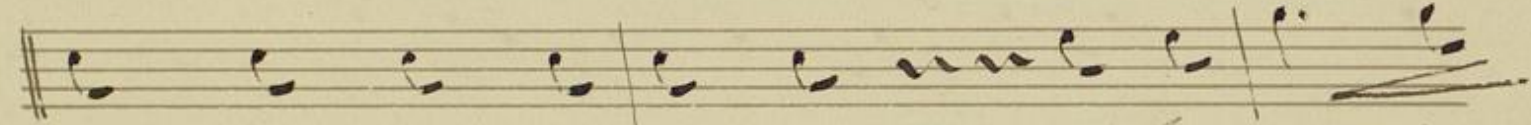


Blasne, *in* *faan* *in* *fan* *bitten*.



poco *Allo.*

Allan



baugt *zu* *na* *fehane* *rafoe* *bliabde*



offlihtwist *tanu* *tra* *offlihtwist* *tanu*.



Wist *tanu* *ifu* *nor* *Naaf* *knur* *vanu*



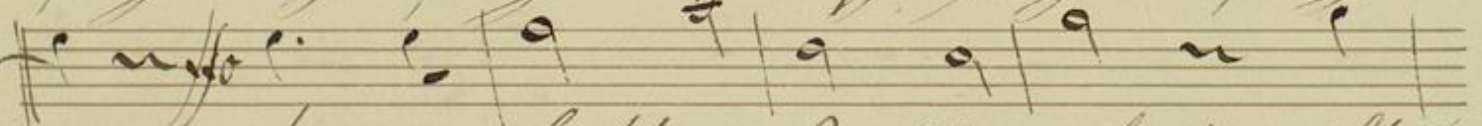
brun *bit* *tu* *brucht* *ifu* *fung* *brucht* *ifu* *fung*



brun *bitten* *brucht* *ifu*



fung *ifu* *fung* *brucht* *ifu* *fung*

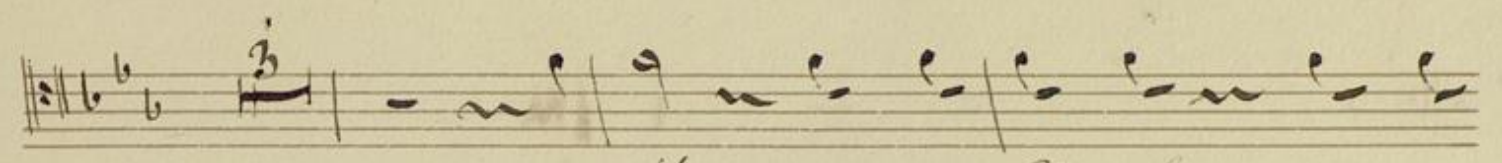


brun *bitten* *brucht* *ifu* *fung* *wist*

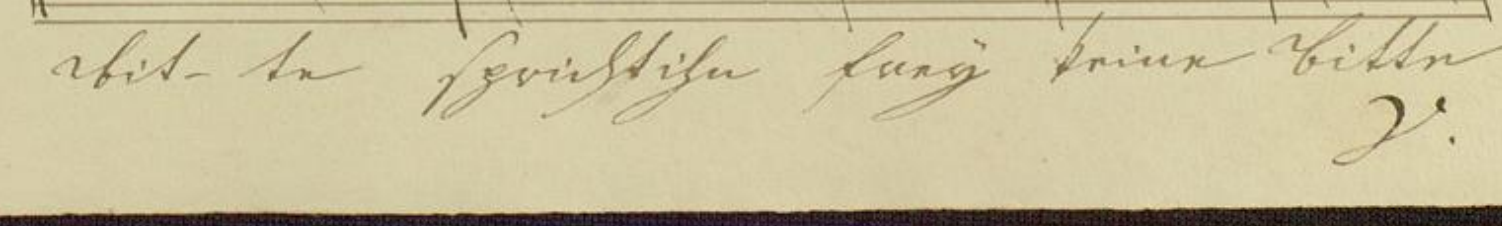
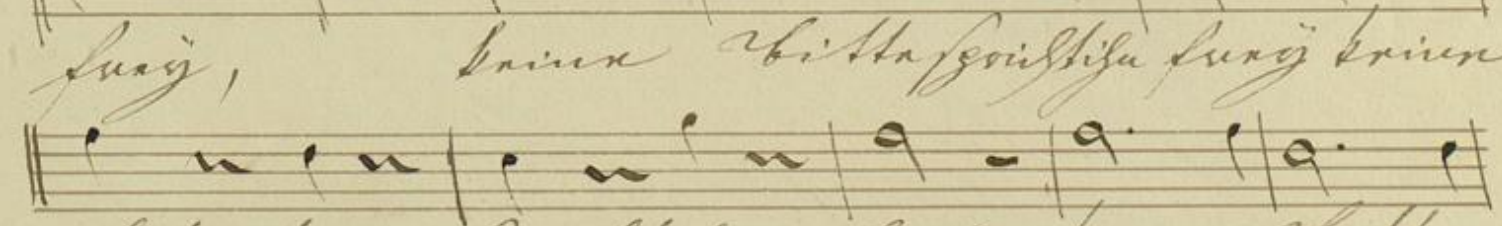
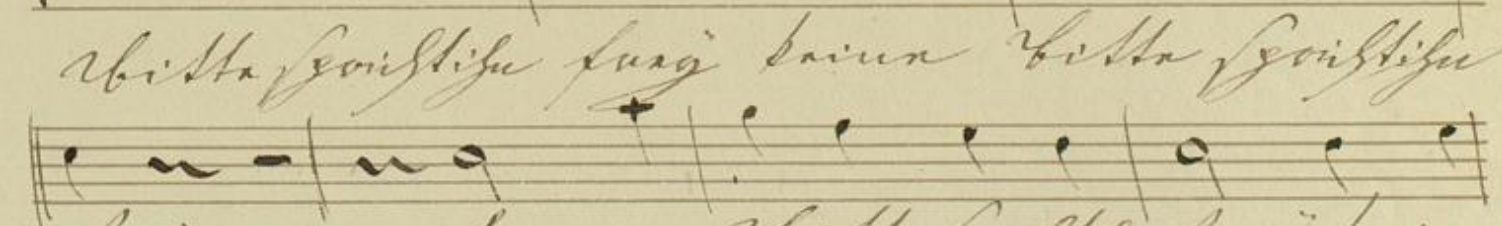
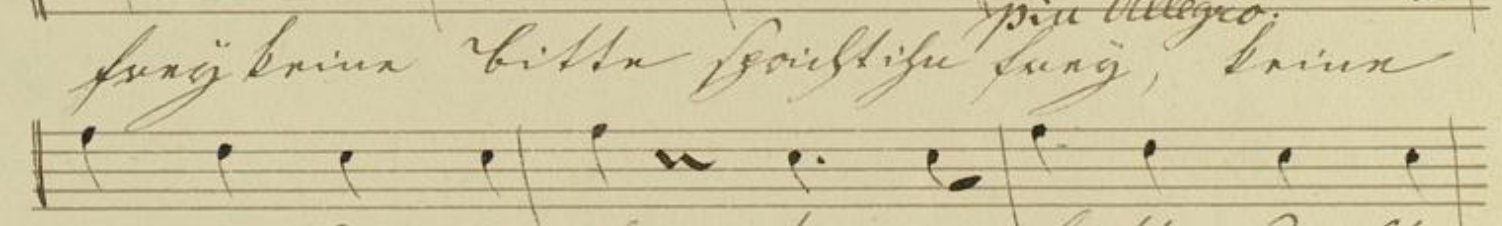
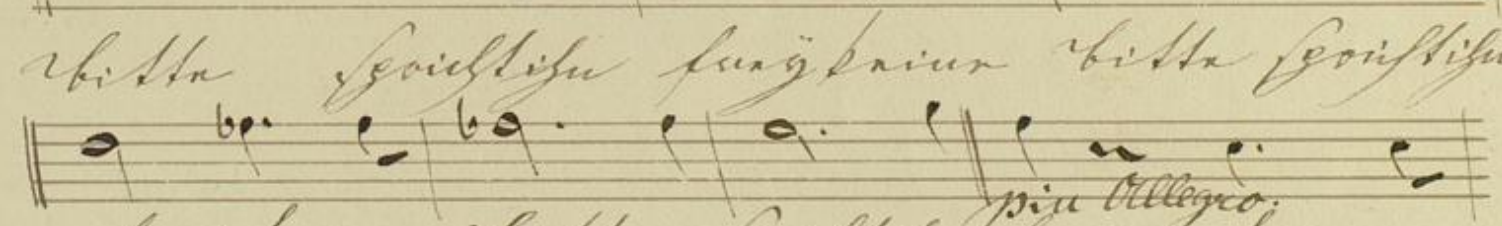
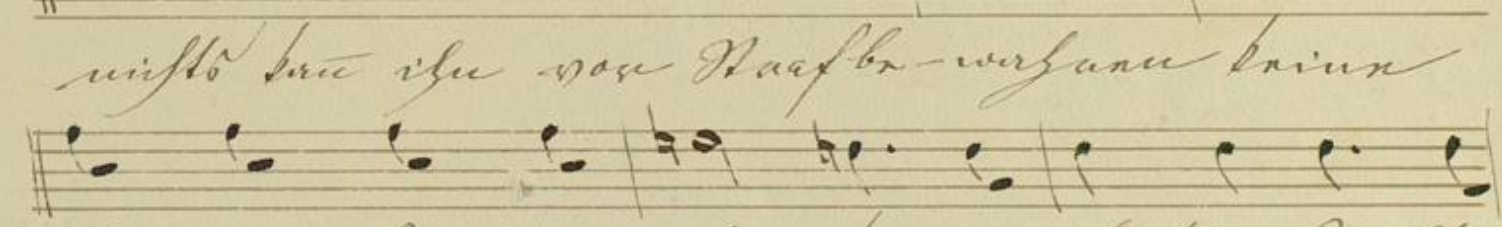
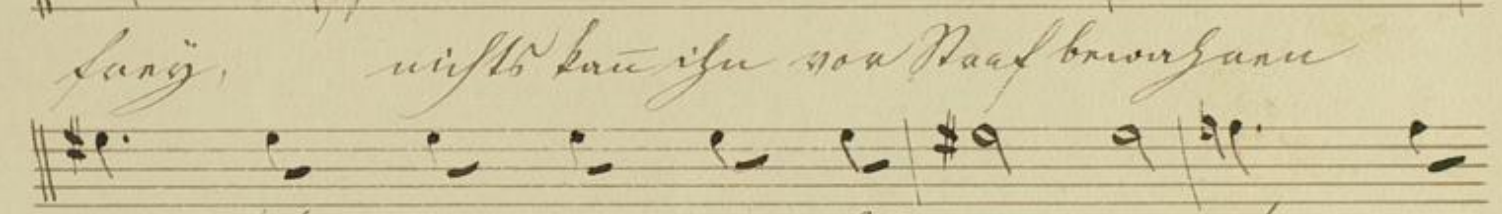
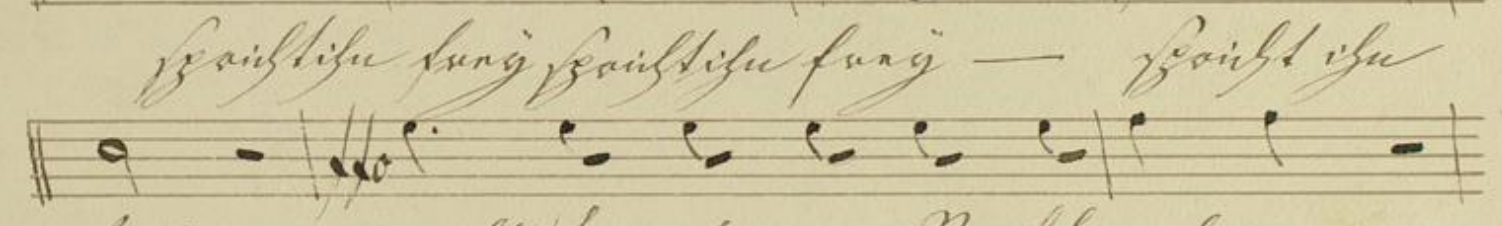
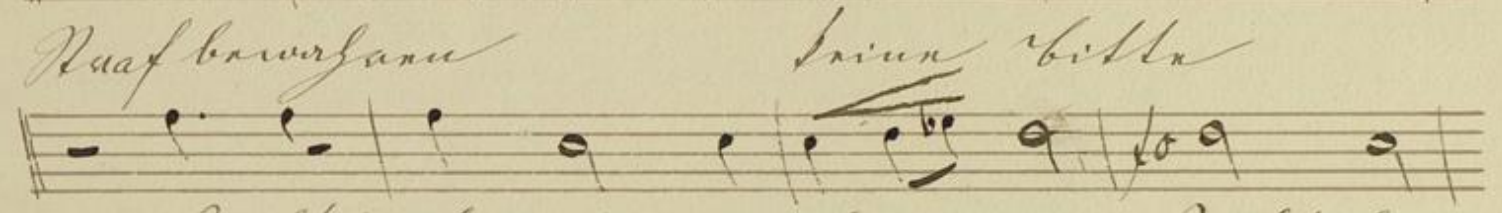
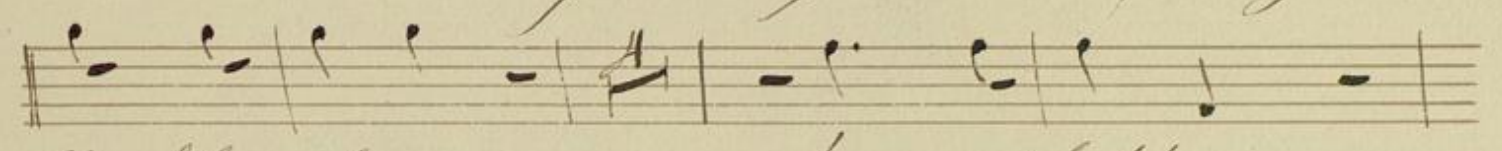


tanu *ifu* *nor* *Naaf* *ifu* *nor* *Naaf* *wafan*,

J. S.



wißtst du ihn von Naach diru von



abst- tu geistliche sang priun bitten
J.

Christliche Lied.