

# **Badische Landesbibliothek Karlsruhe**

**Digitale Sammlung der Badischen Landesbibliothek Karlsruhe**

## **Salve regina - Don Mus.Ms. 1220**

**Leuttner, Georg Christoph**

**[S.l.], 1700-1710 (18.in)**

**urn:nbn:de:bsz:31-99567**

à 6. Cant. con 5 Instrum. Lib: Georg. Fr. Seydner

Ann. No 2227

*Andata*

Sal - - - ue - - - Regi - na Je - - - sue

Regi - na Mater mi - se - ri - cordiae uita dul - ce - do uita dul - ce - do et spes no - stra sal - - - ue uita dul - ce - do uita dul - ce - do et spes no - stra sal - - - ue

te - - - ante - - - cla - - - ma - - - mus - - - exules

fili - - - i tui - - - cla - - - ma - - - mus - - - exules fili - - - i tui - - - ante - - - te

sus - - - pi - - - ci - - - mus - - - sus - - - pi - - - ci - - - mus - - - ante - - - te - - - ge - - - n - - - tes



et flentes in hac lacryma - rum ualle in hac lacryma -  
 rum ualle lacryma - rum ualle *rit.* Eia ergo aduo -  
 ca - ta nostra. Eia ergo aduo ca - ta nostra illos  
 tuos mise - ri cordes oculos ad nos - ad nos - conuerte  
 ad nos - conuerte *Solo* Et Je - sum benedichum  
 fructum uentris tui nobis pop hoc exi - lium ope - de  
 O benenso pia o pia o dulcis o dulcis Virgo Mari -  
 o benenso pia o pia o dulcis o dulcis Virgo



Mari-a o - - - Maria o clemens o pia o  
 pia o dulcis o dulcis Virgo Mari-a o clemens o pia o  
 pia o dulcis o dulcis Virgo Mari-a o - - -  
 Maria Dulcis Virgo Virgo Maria



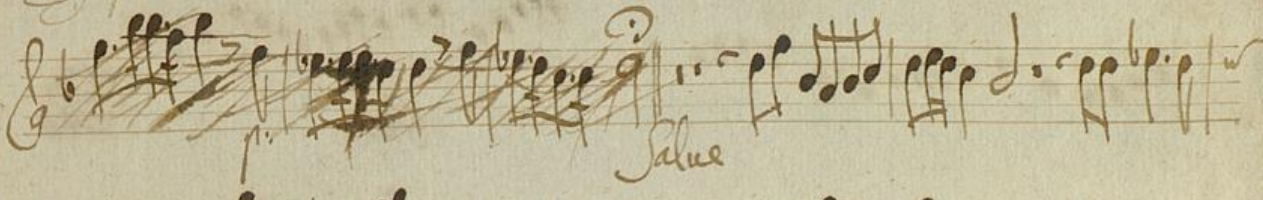
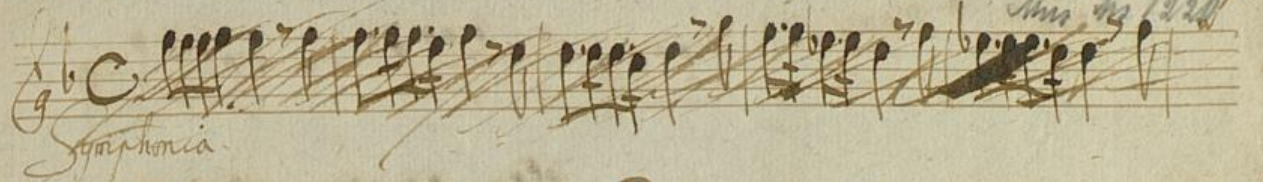




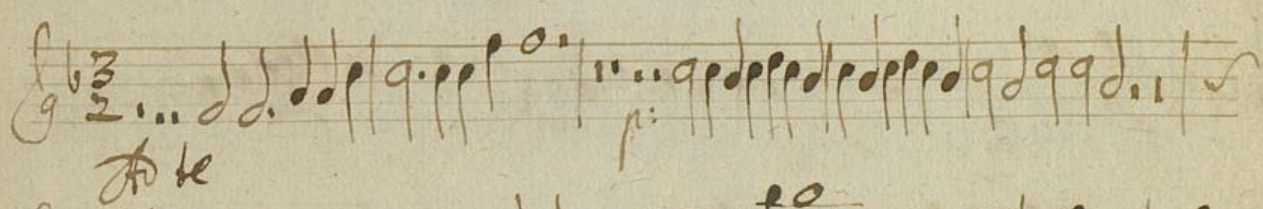
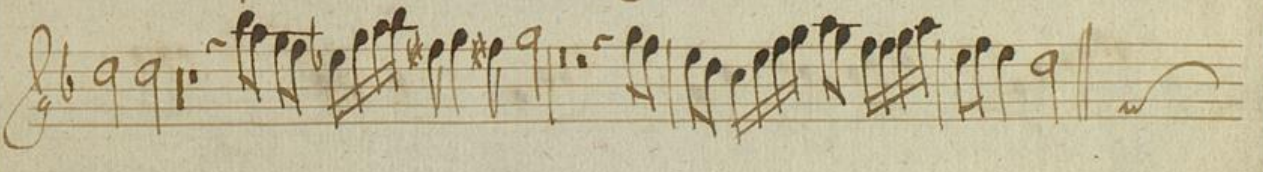
Violino primo à 6. C. cor. 5 Instr. Tutti: Erb. Georg. Christoph. Seydner 1

Am. 12 20

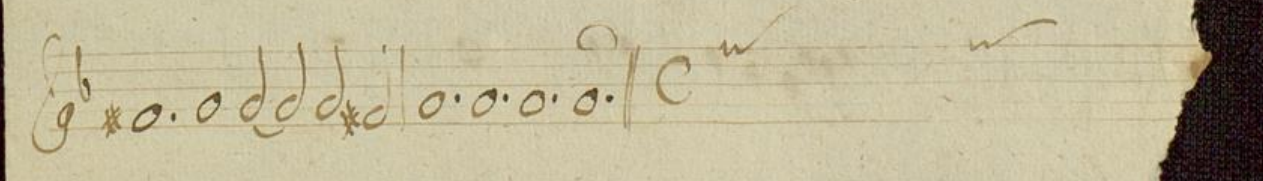
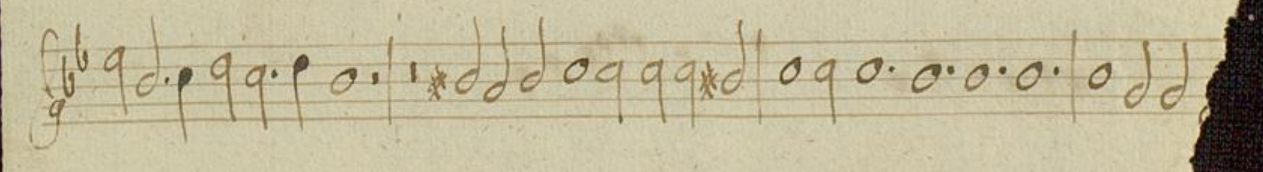
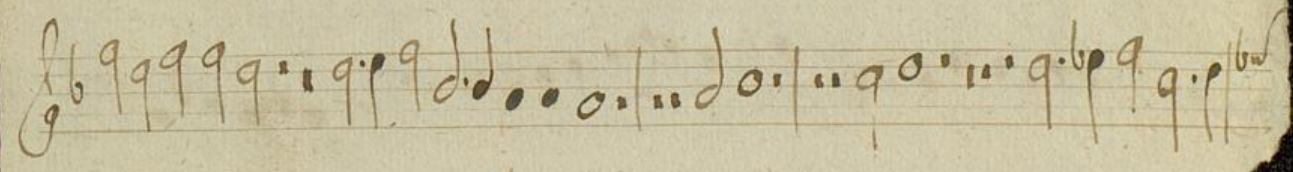
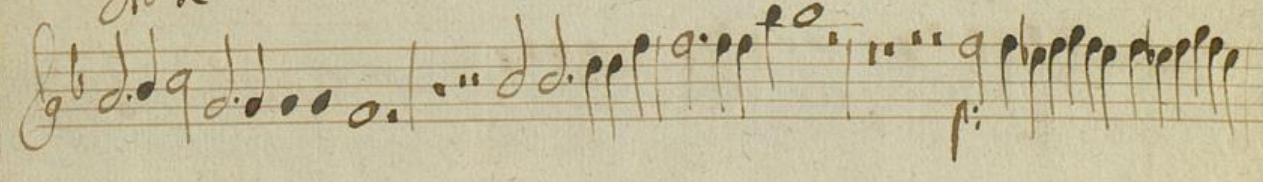
*Symphonia*



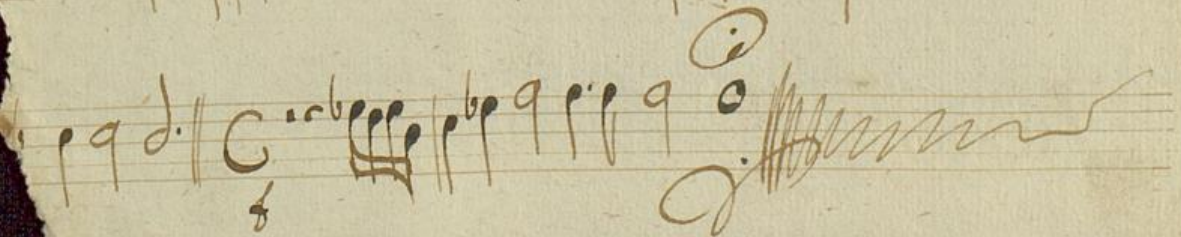
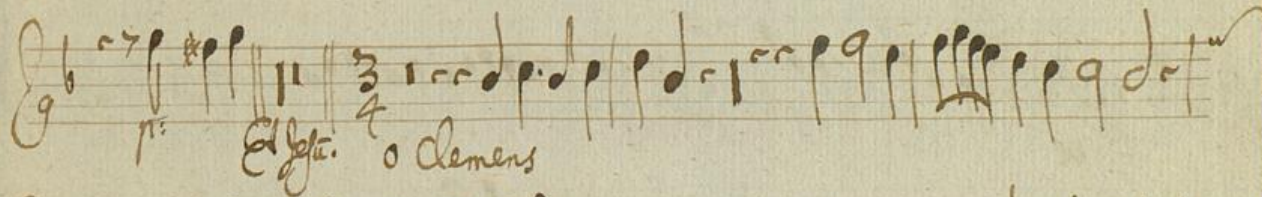
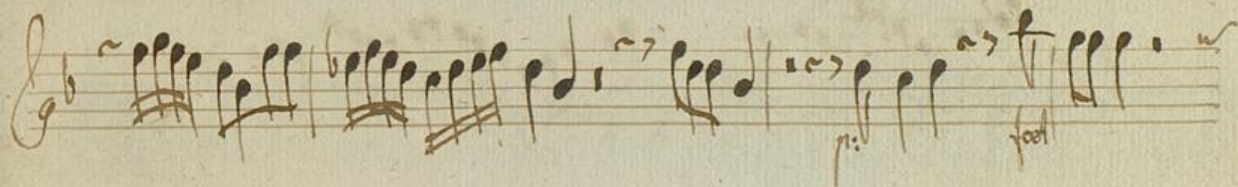
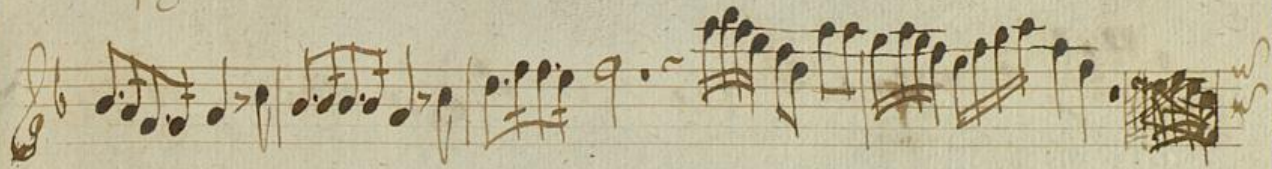
*Salve*



*Alte*









Violino 2do à 6. C con: a Jahn: Adh. Gio. Georg. Hoff: Leghner's  
Mus. Nr. 1220

Symphonia

pian

Salve

Ad te



*p*

*Et Jesu O Admens*



Viola ma

1  
Am. No 1220

*Sinfonia*  
Handwritten musical notation on a single staff, starting with a treble clef and a common time signature. The notation includes various rhythmic values and accidentals.

*Salve*  
Handwritten musical notation on a single staff, starting with a treble clef and a common time signature. The notation includes various rhythmic values and accidentals.

*Ad te*  
Handwritten musical notation on a single staff, starting with a treble clef and a common time signature. The notation includes various rhythmic values and accidentals.

Handwritten musical notation on a single staff, starting with a treble clef and a common time signature. The notation includes various rhythmic values and accidentals.

Handwritten musical notation on a single staff, starting with a treble clef and a common time signature. The notation includes various rhythmic values and accidentals.

Handwritten musical notation on a single staff, starting with a treble clef and a common time signature. The notation includes various rhythmic values and accidentals.

Handwritten musical notation on a single staff, starting with a treble clef and a common time signature. The notation includes various rhythmic values and accidentals.

Handwritten musical notation on a single staff, starting with a treble clef and a common time signature. The notation includes various rhythmic values and accidentals.



Handwritten musical notation on a single staff, featuring various rhythmic values and accidentals.

Handwritten musical notation on a single staff with a double bar line and a 3/4 time signature.

*Allegro* *O demens*

Handwritten musical notation on a single staff.

Handwritten musical notation on a single staff.

Handwritten musical notation on a single staff.

Handwritten musical notation on a single staff, ending with a decorative flourish.

Four empty musical staves at the bottom of the page.



Viola da à 6. C. cor. 5. Instrum. Auth. Gio. Georg. H. Leglino  
Mus. d. 1328

Symphonia

Salve

Ale



Handwritten musical notation on a single staff, featuring various note values and rests.

Handwritten musical notation on a single staff, including the lyrics "Et Jesum O clemens" written in cursive below the notes.

Handwritten musical notation on a single staff, continuing the piece with various rhythmic patterns.

Handwritten musical notation on a single staff, showing a continuation of the melodic line.

Handwritten musical notation on a single staff, featuring a series of notes and rests.

Handwritten musical notation on a single staff, ending with a wavy line and a flourish.

Four empty musical staves at the bottom of the page, indicating the end of the written music on this page.



Viora zha, à 6. C. con: 5 Int: tutti: poco: Legitimo. 7

Handwritten musical notation on a single staff, featuring various rhythmic values and accidentals. Fingerings (6, 7, 6) and dynamics (p) are indicated.

Symphonia

Handwritten musical notation on a single staff, including a treble clef and various notes. Fingerings (6, 4, 3) and dynamics (p) are present.

Salve

Handwritten musical notation on a single staff, featuring a 3/2 time signature and various rhythmic patterns. Dynamics (p) are indicated.

Handwritten musical notation on a single staff, consisting of rhythmic patterns and notes.

Handwritten musical notation on a single staff, featuring rhythmic patterns and notes.

Handwritten musical notation on a single staff, consisting of rhythmic patterns and notes.

Handwritten musical notation on a single staff, including a treble clef and various notes. Dynamics (p) and the word 'poco' are present.

Handwritten musical notation on a single staff, featuring rhythmic patterns and notes. Dynamics (p) are indicated.



Handwritten musical notation on a single staff, featuring various note values and rests.

Handwritten musical notation on a single staff, including a 3/4 time signature and the text "Alfa Olemens" written below the notes.

Handwritten musical notation on a single staff, continuing the piece with various rhythmic patterns.

Handwritten musical notation on a single staff, showing a continuation of the melodic line.

Handwritten musical notation on a single staff, featuring a double bar line and a fermata over a note.

Handwritten musical notation on a single staff, ending with a double bar line and a fermata.



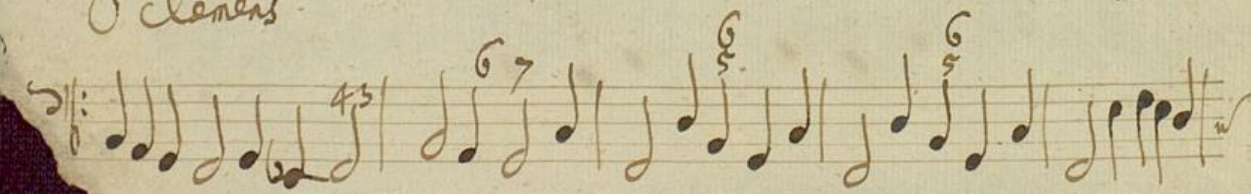
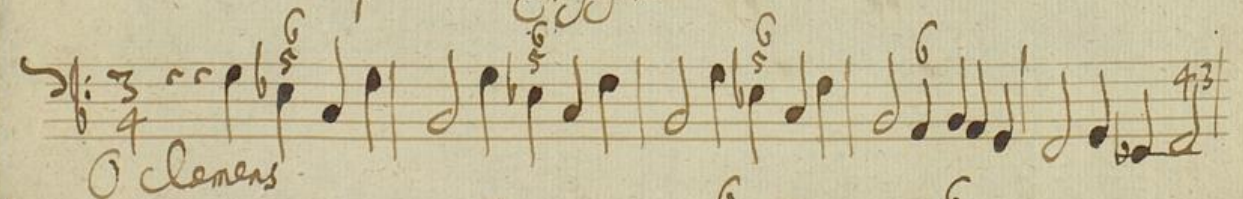
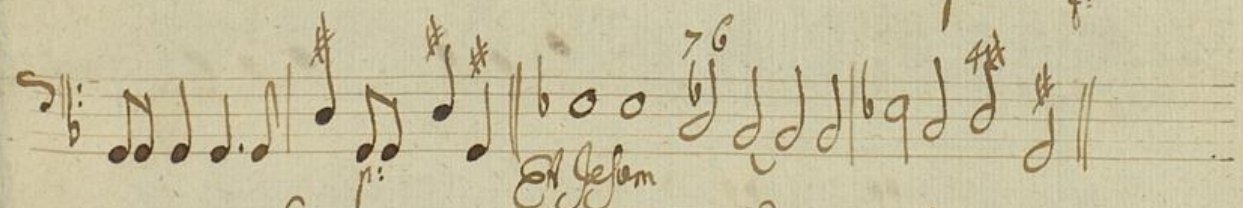
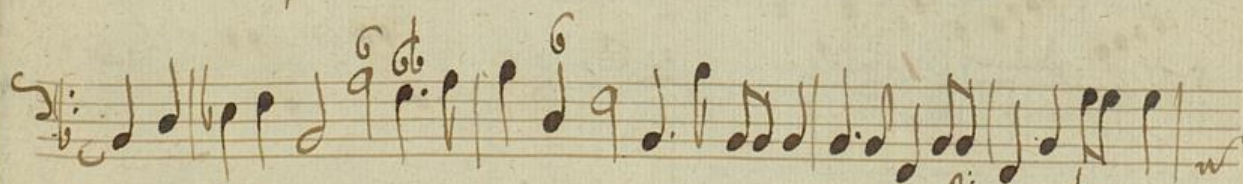
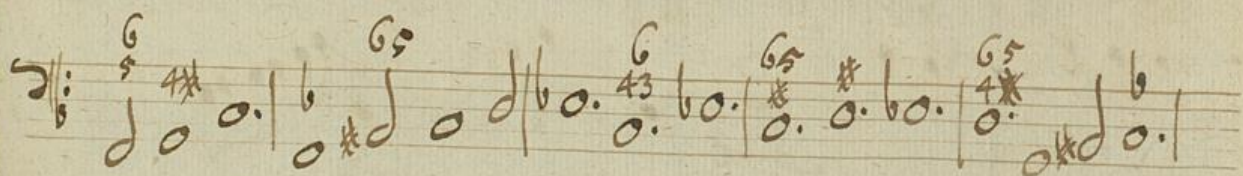
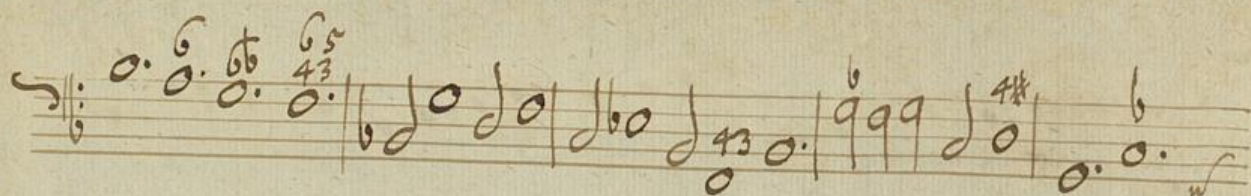
Organo à 6. C con. 5. Inta. Adh. Georg. Christoph. Leyhner 1

~~Magister 1620~~

Symphonia habetur infra

Salve







Handwritten musical score on aged paper, featuring seven staves of music. The notation includes various rhythmic values, accidentals, and dynamic markings such as 'p' and '43'. The paper shows signs of age, including foxing and a torn bottom edge.

*Symphonia admodicum*



4

