

Badische Landesbibliothek Karlsruhe

Digitale Sammlung der Badischen Landesbibliothek Karlsruhe

Symphonies - Don Mus.Ms. 1202

Lang, Johann Georg

[S.l.], 1770 (1770c)

Bass

urn:nbn:de:bsz:31-99242

Ms. No. 1202

Symphonia

Violino Primo 1

Violino Secondo 1

Cornu Primo 1

Cornu Secondo 1

Alto Viola 1

Con

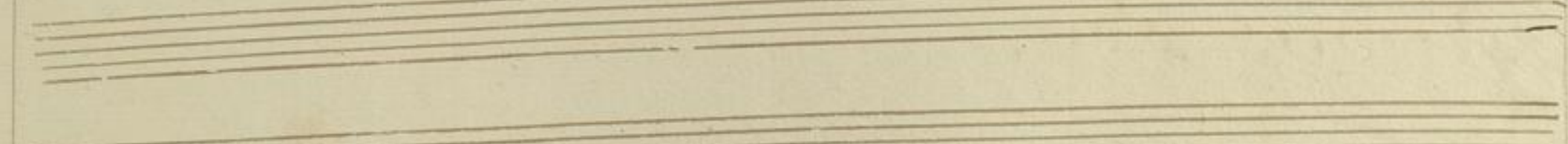
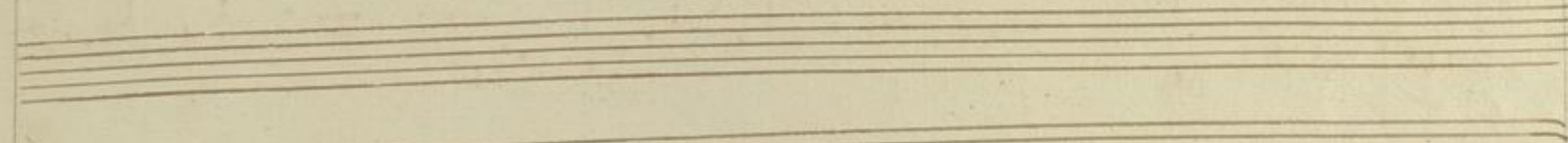
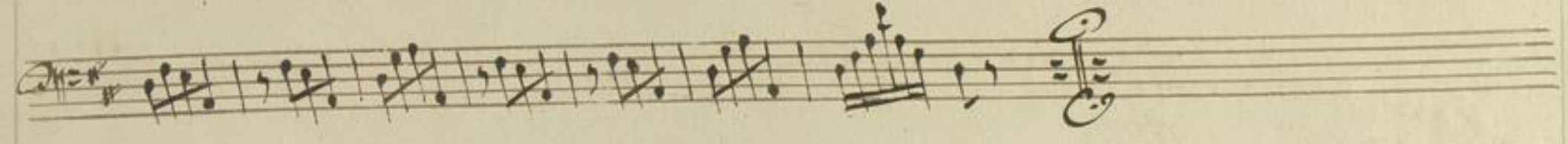
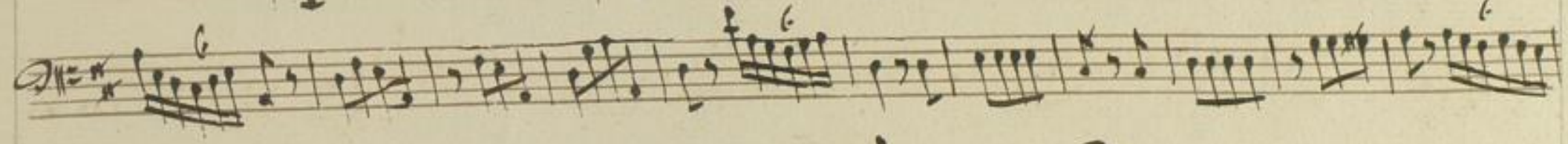
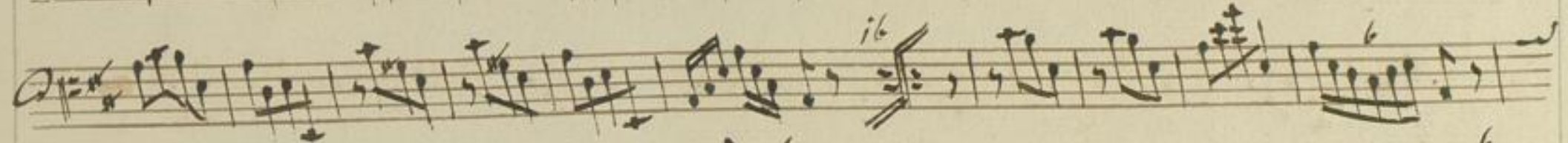
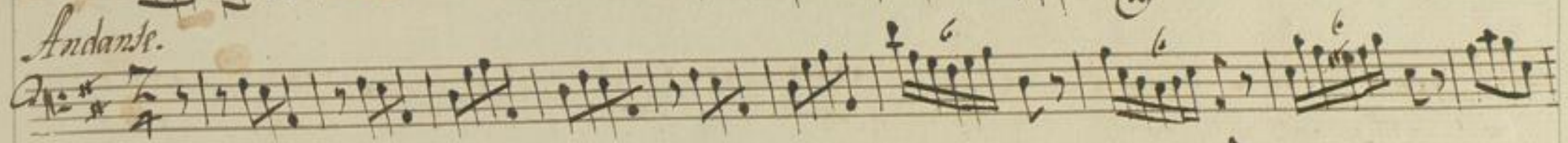
Basso 1

Del. sigl. Lang.

Allegro Assai.

Passo.

A handwritten musical score on aged paper, consisting of ten staves. The notation is in a single system, with each staff containing a different part of the music. The score begins with a treble clef, a key signature of one sharp (F#), and a common time signature (C). The tempo is marked 'Allegro Assai.' and the movement is 'Passo.' The music features a variety of rhythmic patterns, including eighth and sixteenth notes, and rests. There are several dynamic markings, such as 'f.' (forte) and 'p.' (piano), and articulation marks like 'acc.' (accents). The notation is dense and characteristic of 18th or 19th-century manuscript notation. The paper shows signs of age, including some staining and a small tear at the bottom edge.



Presto

A handwritten musical score for a piano piece, titled "Presto". The score consists of eight staves of music. The notation is dense and complex, featuring many sixteenth and thirty-second notes, often beamed together in groups. The music is written in a single system, with each staff containing a different part of the composition. The notation includes various rhythmic values, accidentals, and dynamic markings such as *f* (forte) and *ff* (fortissimo). There are also some performance instructions like *rit.* (ritardando) and *tr.* (trill). The paper shows signs of age, with some foxing and staining, particularly in the upper right corner. The handwriting is in dark ink, and the overall style is characteristic of 18th or 19th-century manuscript notation.