

Badische Landesbibliothek Karlsruhe

Digitale Sammlung der Badischen Landesbibliothek Karlsruhe

155 Pieces - Don Mus.Ms. 1272|2

[S.l.], 1734 (1734c)

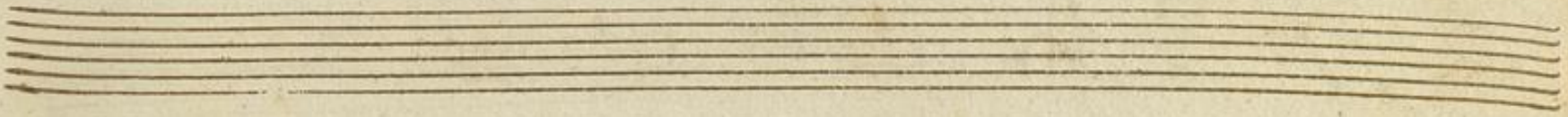
Suites. 5.Ton (lydisch)

urn:nbn:de:bsz:31-100325

angro

Partita ex Thoro, Stor

Andantissimo



Andante

Handwritten musical notation on a single staff. It begins with a treble clef, a key signature of one sharp (F#), and a common time signature (C). The music consists of a series of notes, many of which are marked with a 'v' (accendo) and a 'f' (forte). The notes are primarily quarter and eighth notes, with some rests.

Andante

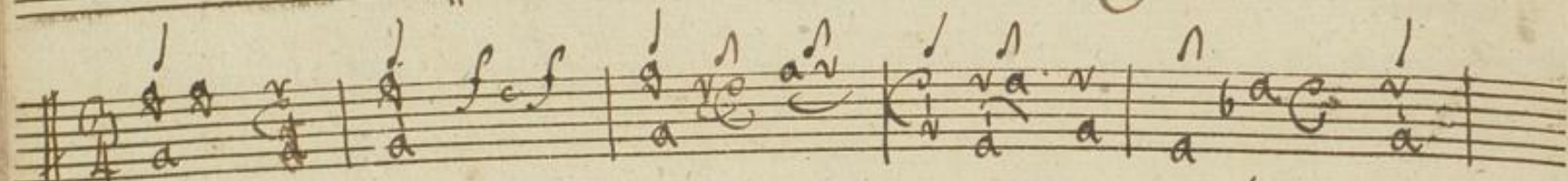
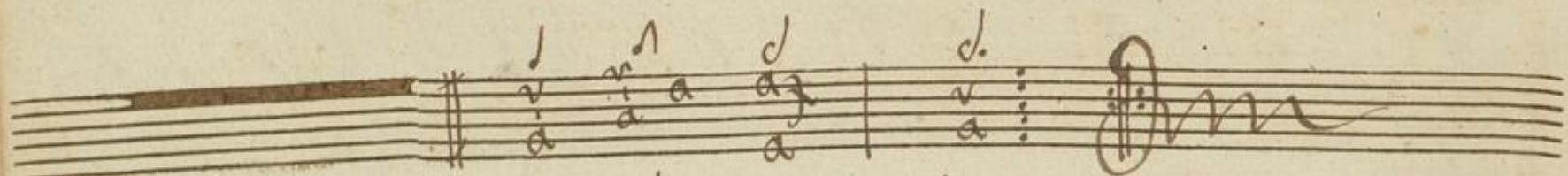
Handwritten musical notation on a single staff. It begins with a treble clef, a key signature of one sharp (F#), and a common time signature (C). The music features a mix of note values, including quarter, eighth, and sixteenth notes, with some slurs and dynamic markings like 'f'.

Handwritten musical notation on a single staff. It begins with a treble clef, a key signature of one sharp (F#), and a common time signature (C). The notation includes various note values and rests, with some notes marked with 'v' and 'f'.

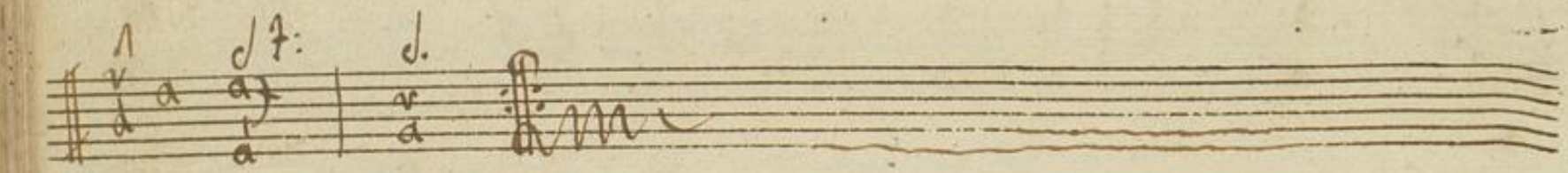
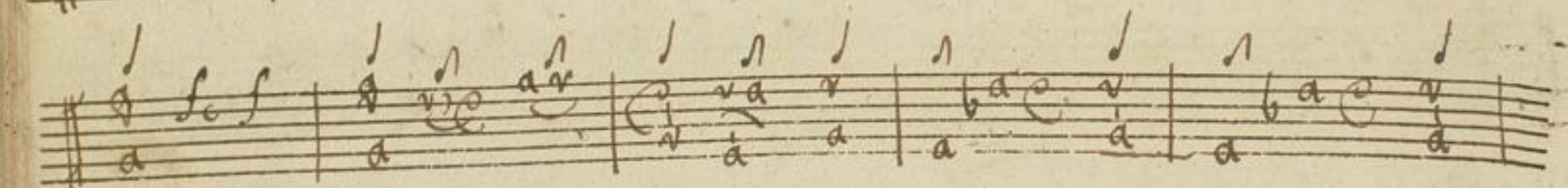
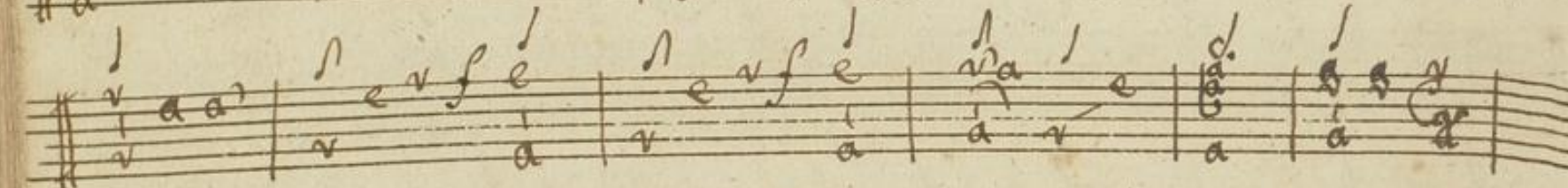
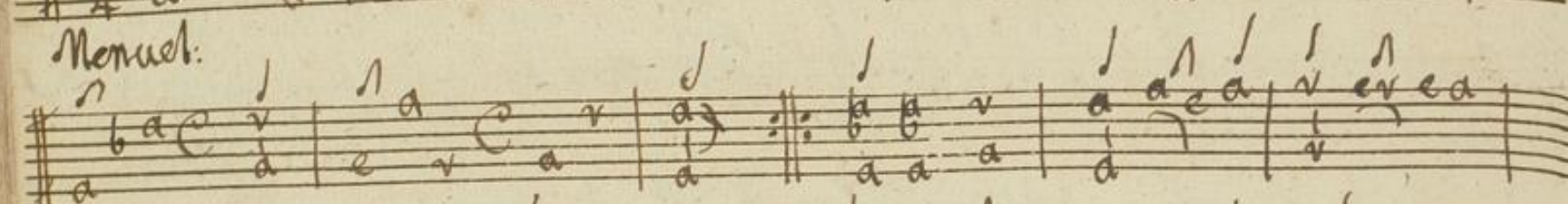
Handwritten musical notation on a single staff. It begins with a treble clef, a key signature of one sharp (F#), and a common time signature (C). The music includes a repeat sign (double bar line with two dots) and various note values.

Handwritten musical notation on a single staff. It begins with a treble clef, a key signature of one sharp (F#), and a common time signature (C). The notation features a variety of note values and rests.

Handwritten musical notation on a single staff. It begins with a treble clef, a key signature of one sharp (F#), and a common time signature (C). The music includes a repeat sign and various note values.



Menuet:



Gigue:

Handwritten musical score for a piece titled "Gigue". The score consists of six systems of two staves each. The notation includes various note values (quarter, eighth, sixteenth notes), rests, and dynamic markings such as "f" (forte) and "ff" (fortissimo). The lyrics "eva" and "eva eva" are written below the notes in several places. The piece concludes with a double bar line and a decorative flourish.

