

# **Badische Landesbibliothek Karlsruhe**

**Digitale Sammlung der Badischen Landesbibliothek Karlsruhe**

**155 Pieces - Don Mus.Ms. 1272|2**

**[S.l.], 1734 (1734c)**

Gigues

**urn:nbn:de:bsz:31-100325**

Handwritten musical notation on a five-line staff. It begins with a treble clef and a common time signature (C). The notation consists of several measures of music with notes and stems, some with flags or beams.

*Menaech*

Handwritten musical notation for the piece 'Menaech'. It starts with a treble clef and a common time signature. The notation includes notes and rests. A double bar line with the word 'finis' is present, indicating the end of the piece.

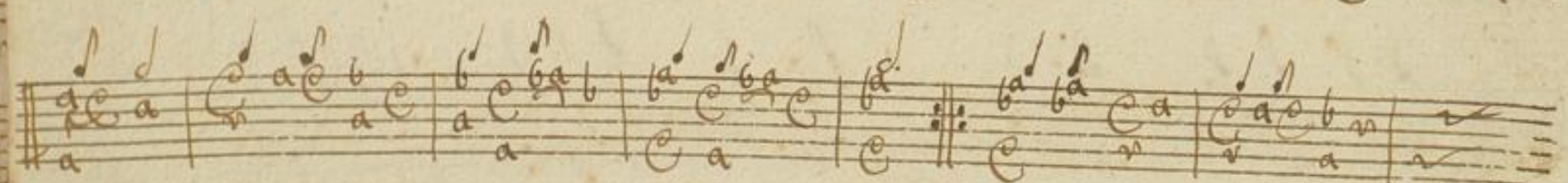
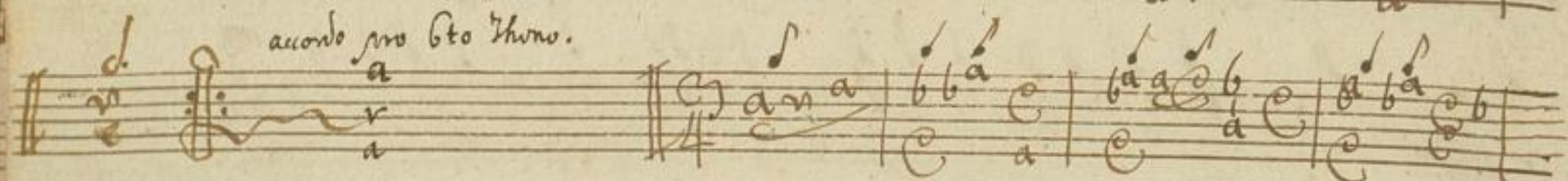
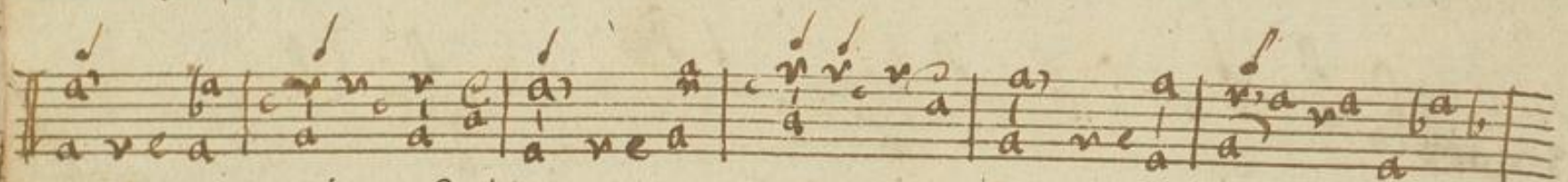
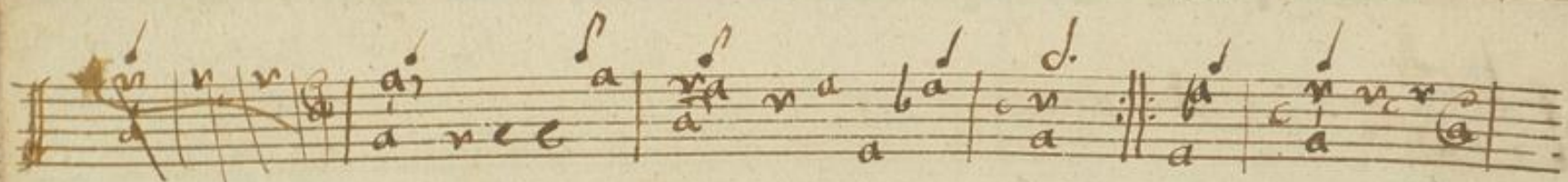
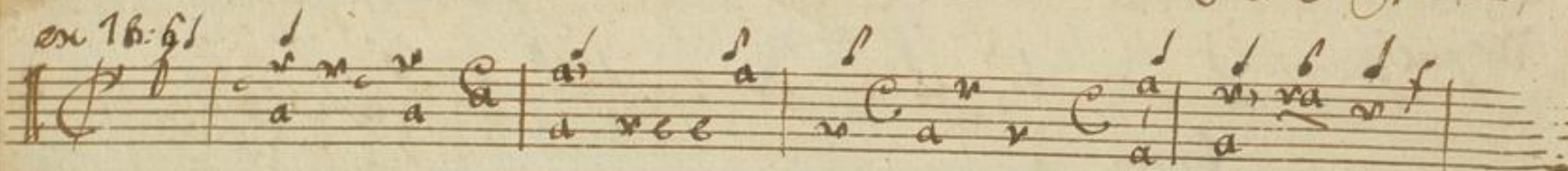
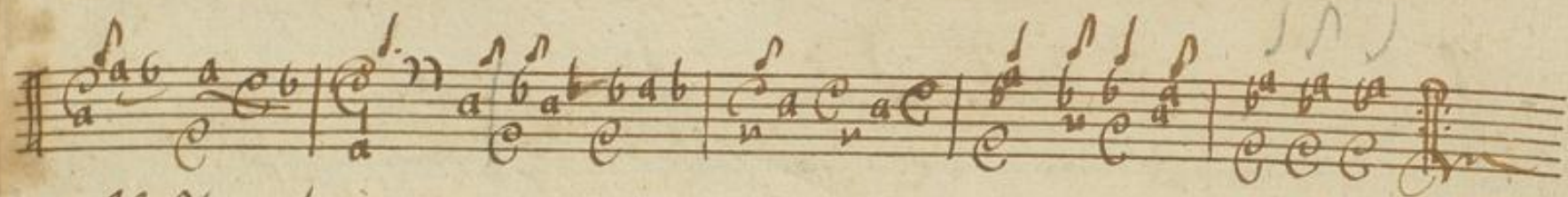
Handwritten musical notation on a five-line staff. It features a treble clef and a common time signature. The notation includes notes and rests. A double bar line with the word 'Cacapo' is present, likely indicating a section or a specific instruction.

*Gigaell*

Handwritten musical notation for the piece 'Gigaell'. It begins with a treble clef and a common time signature. The notation consists of several measures of music with notes and stems.

Handwritten musical notation on a five-line staff. It features a treble clef and a common time signature. The notation includes notes and rests, continuing the piece from the previous staff.

Handwritten musical notation on a five-line staff. It features a treble clef and a common time signature. The notation includes notes and rests, continuing the piece from the previous staff.



ex thony Gto:

Handwritten musical notation on a five-line staff. It begins with a treble clef and a common time signature (C). The notation consists of a series of notes, many of which are marked with a 'v' (accents) and some with a 'd' (slurs). The notes are primarily eighth and sixteenth notes, with some quarter notes. The melody is written in a cursive, handwritten style.

Handwritten musical notation on a five-line staff, continuing the piece. It features similar notation to the first staff, with notes and accents. The handwriting is consistent throughout the manuscript.

Handwritten musical notation on a five-line staff. This section includes some notes with a 'd' above them, possibly indicating slurs or specific articulation. The notation remains in the same handwritten style.

Handwritten musical notation on a five-line staff. The notes are more widely spaced in this section, possibly indicating a change in tempo or a different rhythmic pattern. The notation is still handwritten and includes various note values and accents.

Handwritten musical notation on a five-line staff. This section shows a continuation of the melodic line with various note values and accents. The handwriting is clear and consistent.

Five empty musical staves at the bottom of the page, indicating the end of the written music on this page.