

Badische Landesbibliothek Karlsruhe

Digitale Sammlung der Badischen Landesbibliothek Karlsruhe

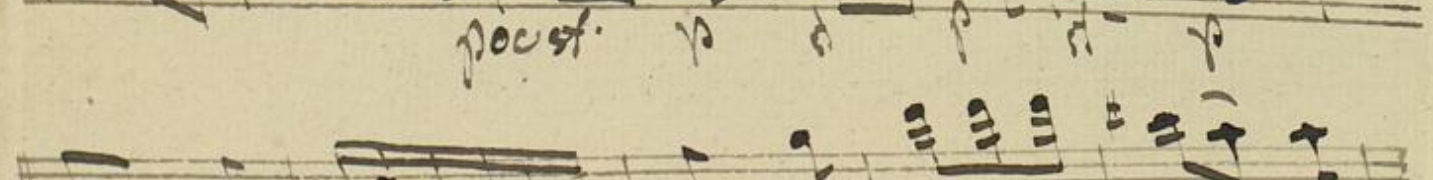
L' Arbore di Diana - Don Mus.Ms. 1283a-e

Martín y Soler, Vicente

[S.l.], 1790 (1790c)

10. Allegretto con moto

urn:nbn:de:bsz:31-100797



The image shows a page of handwritten musical notation on aged, yellowed paper. The page is numbered '309' in the top right corner. It contains four systems of musical staves, each with a treble and bass clef. The notation is written in a cursive, historical style. The first system consists of two staves with a treble clef on the left and a bass clef on the right. The second system also has two staves with a treble clef on the left and a bass clef on the right. The third system has two staves with a treble clef on the left and a bass clef on the right. The fourth system has two staves with a treble clef on the left and a bass clef on the right. The notation includes various note values, rests, and bar lines. The paper shows signs of age, including some staining and a slightly irregular edge.

Adagio

Handwritten musical score on aged paper, featuring five staves. The notation includes treble and bass clefs, a common time signature, and various rhythmic values. The fourth staff is heavily scribbled out with dark ink. The paper shows signs of age, including foxing and staining.

A handwritten musical score on ten staves. The notation includes various note values, rests, and dynamic markings. The annotations are as follows:

- Staff 4: *cres.* (crescendo)
- Staff 5: *pp* (pianissimo)
- Staff 6: *mod. rit.* (moderato ritardando)
- Staff 7: *cres.* (crescendo)
- Staff 8: *rit.* (ritardando)
- Staff 9: *sf.* (sforzando)
- Staff 10: *sf.* (sforzando)

A handwritten musical score on 12 staves. The notation includes various note values, rests, and clefs. The first staff begins with a treble clef and a common time signature. The second staff has a bass clef. The third staff has a treble clef. The fourth staff has a bass clef. The fifth staff has a treble clef and includes dynamic markings such as *sf* and *p*. The sixth staff has a bass clef and includes dynamic markings such as *sf* and *p*. The seventh staff has a treble clef and includes dynamic markings such as *sf* and *p*. The eighth staff has a bass clef and includes dynamic markings such as *sf* and *p*. The ninth staff has a treble clef and includes dynamic markings such as *sf* and *p*. The tenth staff has a bass clef and includes dynamic markings such as *sf* and *p*. The eleventh staff has a treble clef and includes dynamic markings such as *sf* and *p*. The twelfth staff has a bass clef and includes dynamic markings such as *sf* and *p*. The score is written in a cursive, handwritten style.