

# **Badische Landesbibliothek Karlsruhe**

**Digitale Sammlung der Badischen Landesbibliothek Karlsruhe**

## **Potpourris - Don Mus.Ms. 1307**

**Merk, Josef**

**[S.l.], 1830 (1830c)**

Potpourris

**urn:nbn:de:bsz:31-101392**



# Violoncello Solo.

*Tutti.* *Fag. II<sup>do</sup>.* *Basso.*

*Adagio.* *For.*

*pp.* *Solo.*

*Allegretto!* *Solo.*

*For.* 2



Handwritten musical score on three staves. The notation includes treble clefs, a key signature of one sharp (F#), and various rhythmic values. Fingerings are indicated by numbers 1-4. A red 'F' is written at the beginning of the first staff, and a red circled '3' is at the end of the third staff. The score concludes with a double bar line and a red flourish.





4

A piece of aged, cream-colored paper with three blank musical staves. Each staff consists of five horizontal lines. The paper is placed on a dark blue background. A small handwritten number '4' is visible in the top left corner of the paper.



*Tutti.*

*Fag.* *Solo.*

*loco.*

*Tutti*  
*fmo.*

*V. J. Solo.*



*Presto.*  
*Solo!*

*For.*  
*p.*  
*cresc.*  
*Maestoso!*  
*Loio.*  
*Thema*  
*Andte cantabile.*  
*mf.*



*Futti.*

*ma. cresc.*

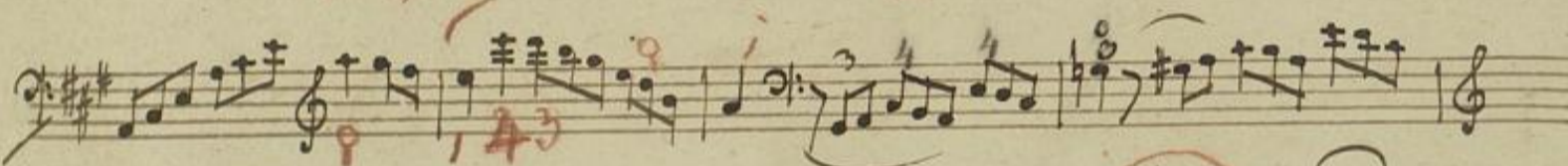
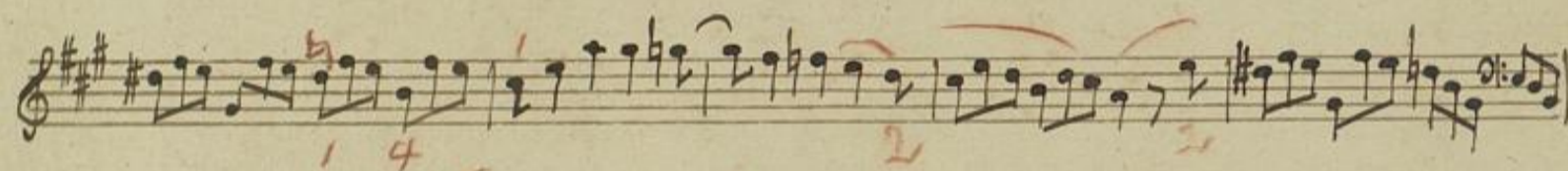
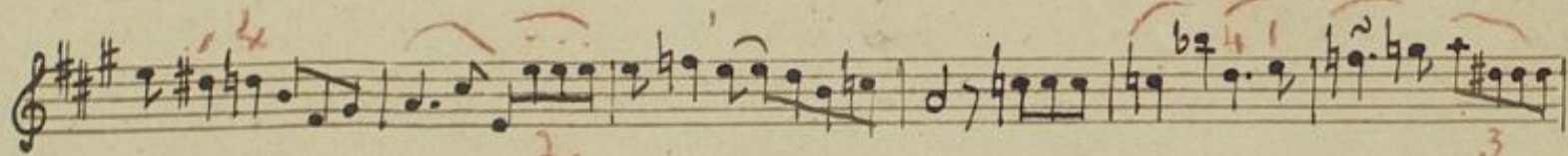
*Var. 1.*

*ma. da.*

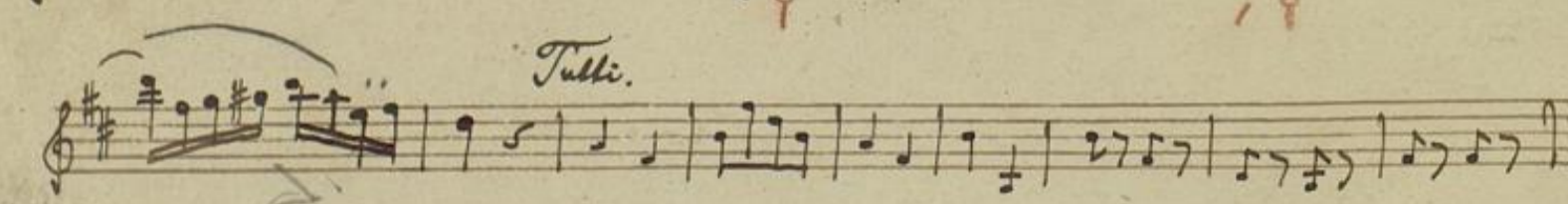
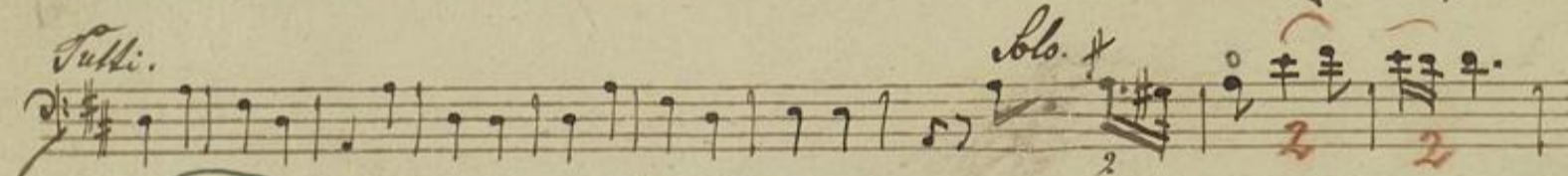
*f*



*Maestoso.*



*Allegretto.*

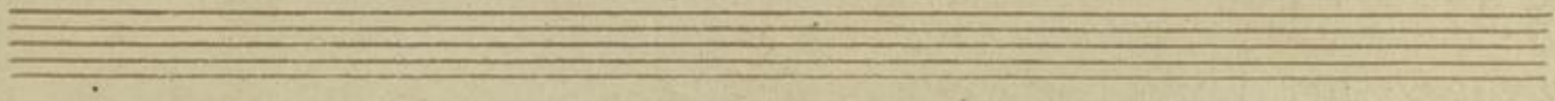




Solo. *p*

Handwritten musical score for a solo piece, consisting of 12 staves of music. The score is written in treble clef with a key signature of two sharps (F# and C#). It features various musical notations including eighth and sixteenth notes, rests, and dynamic markings. Red annotations are present throughout, including fingerings (1, 2, 3), slurs, and measure numbers (9, 34, 49, 40). The piece concludes with a double bar line and a repeat sign.

Tutti.





A page of ten blank musical staves, each consisting of five horizontal lines. The staves are arranged vertically and are completely empty of any musical notation or text. The paper is aged and shows some staining and wear, particularly along the left edge.