

# **Badische Landesbibliothek Karlsruhe**

**Digitale Sammlung der Badischen Landesbibliothek Karlsruhe**

## **Masses - Don Mus.Ms. 1312**

**Jommelli, Niccolò**

**[S.l.], 1780 (1780c)**

Klarine I

**urn:nbn:de:bsz:31-101449**

Clarino Primo. ex D.

alleg. Missa.

alleg.

Handwritten musical notation for the first staff, featuring a treble clef, a key signature of one sharp (F#), and a 2/4 time signature. The notation includes a complex rhythmic pattern with many sixteenth notes, some beamed together, and some notes with slurs. There are also some markings above the staff, possibly indicating fingerings or breath marks.

Kyrie

Kyrie

Christe fact Kyrie da Capo.

Handwritten musical notation for the second staff, continuing the piece. It features a treble clef and a 2/4 time signature. The notation includes a variety of note values and rests, with some notes beamed together. There are also some markings above the staff.

alleg.

gloria

Handwritten musical notation for the third staff, featuring a treble clef and a 2/4 time signature. The notation includes a complex rhythmic pattern with many sixteenth notes, some beamed together, and some notes with slurs. There are also some markings above the staff.

Handwritten musical notation for the fourth staff, featuring a treble clef and a 2/4 time signature. The notation includes a complex rhythmic pattern with many sixteenth notes, some beamed together, and some notes with slurs. There are also some markings above the staff.

Handwritten musical notation for the fifth staff, featuring a treble clef and a 2/4 time signature. The notation includes a complex rhythmic pattern with many sixteenth notes, some beamed together, and some notes with slurs. There are also some markings above the staff.

Handwritten musical notation for the sixth staff, featuring a treble clef and a 2/4 time signature. The notation includes a complex rhythmic pattern with many sixteenth notes, some beamed together, and some notes with slurs. There are also some markings above the staff.

Handwritten musical notation for the seventh staff, featuring a treble clef and a 2/4 time signature. The notation includes a complex rhythmic pattern with many sixteenth notes, some beamed together, and some notes with slurs. There are also some markings above the staff.

Handwritten musical notation for the eighth staff, featuring a treble clef and a 2/4 time signature. The notation includes a complex rhythmic pattern with many sixteenth notes, some beamed together, and some notes with slurs. There are also some markings above the staff.

Handwritten musical notation for the ninth staff, featuring a treble clef and a 2/4 time signature. The notation includes a complex rhythmic pattern with many sixteenth notes, some beamed together, and some notes with slurs. There are also some markings above the staff.

Handwritten musical notation for the tenth staff, featuring a treble clef and a 2/4 time signature. The notation includes a complex rhythmic pattern with many sixteenth notes, some beamed together, and some notes with slurs. There are also some markings above the staff.

Domine qui tollis et poniam facient.

2

Largo.

Cum Sancto.

Proffo.

Moderato.

Credo.

Proffo.

Amen facit

Et in Carnatu facit

Moderato.

Et Resurrexit.

*f.* *h.* *p.* *f.* *f.*

*Sanctus Johanna Benedictus et Agnus Dei factus*

*allegro assai*

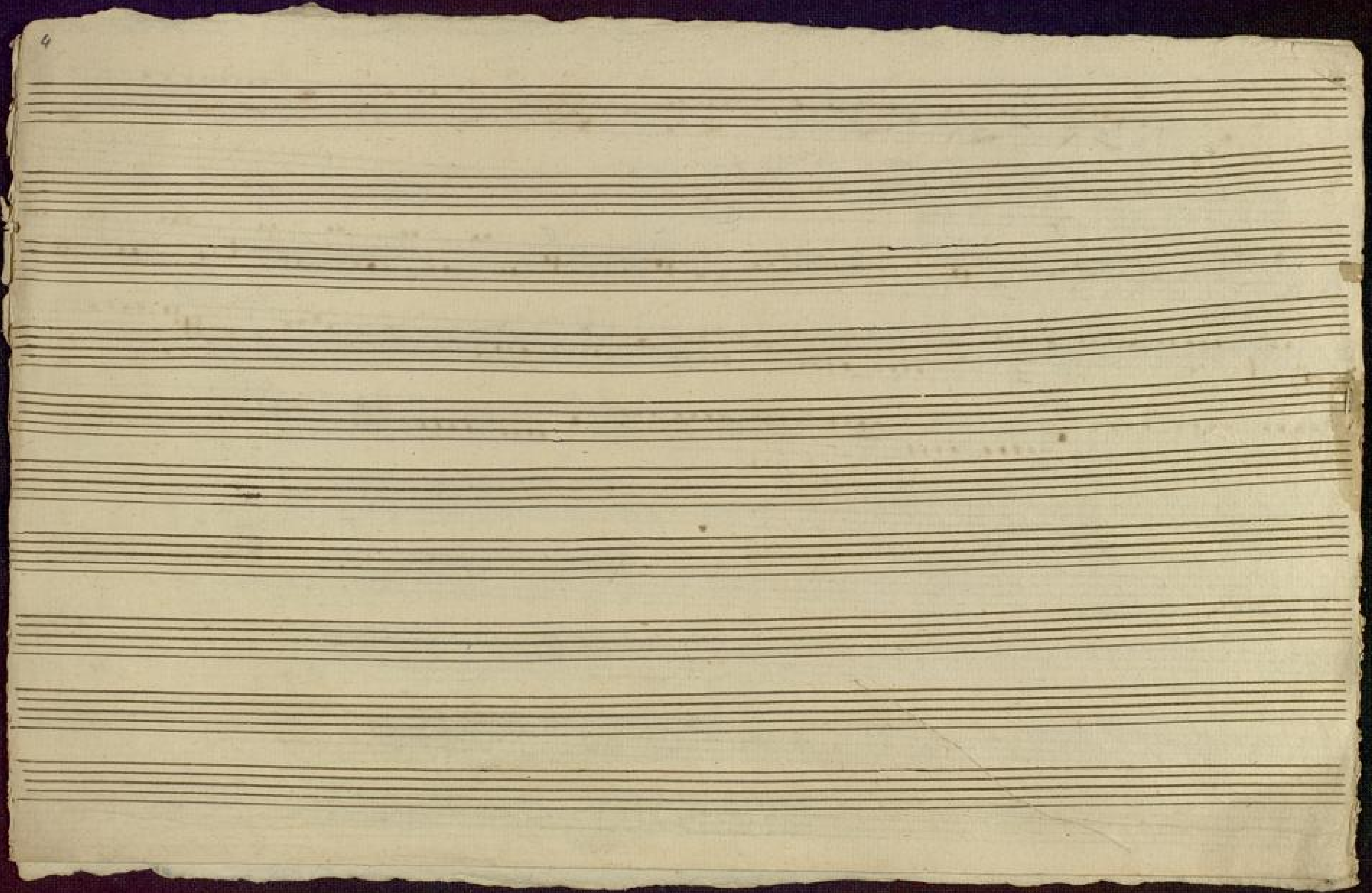
*Dona Nobis*

4 7 14

2

3







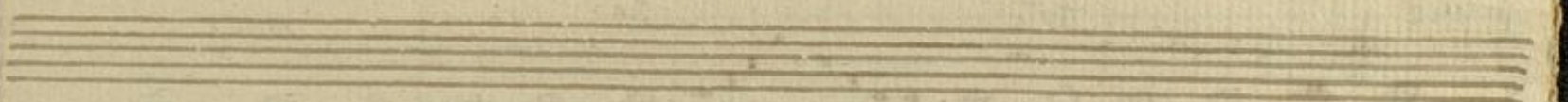
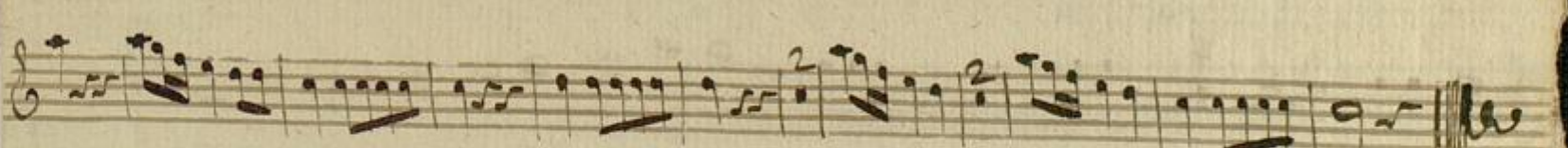
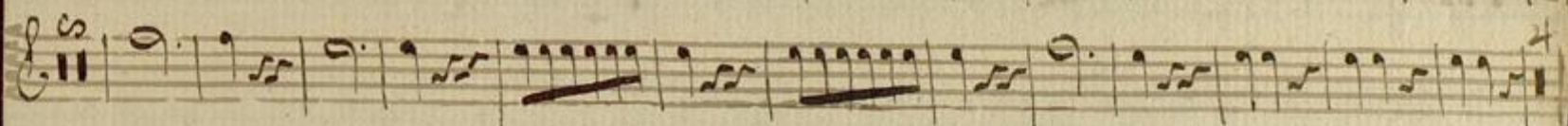
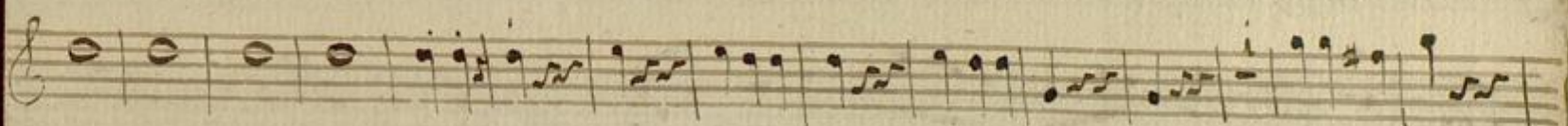
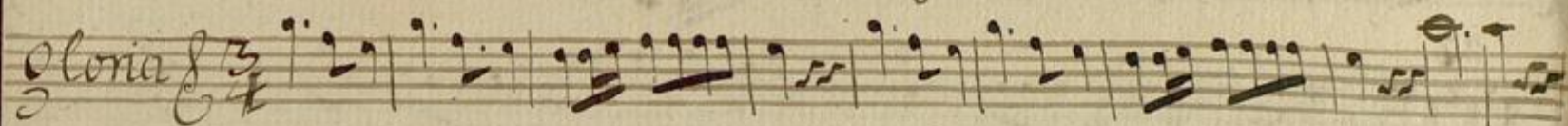
Kyrie allegro

Clarino primo

Mus. No. 1312



Christe Tacet. Kyrie allegro da capo



v. c.



Corni: Allegro

Domine

qui Tollis Tacet

Quoniam Tacet:

Cum sancto. Largo.

Clarino

Amen

pia forti pia forti

V: f

Clari  
A  
Cree  
Al  
C  
G  
G  
Sa  
Cor  
Toni  
San  
Cor  
Toni



Clayino  
Allegro Moderato

Credo 4 | 2 | 7

12 Adagio 26 et Resurrexit =

Allegro moderato

24 | 7

1 5

6 10

11

12

Sanctus

12 13 4 6 4

16 8

2 piano

Benedictus Tacet.



4 Corni

Agnus dei

Adagio

*pianis.*

Handwritten musical notation for the first three staves of the 4 Corni part. The notation includes notes, rests, and dynamic markings. The first staff has a measure rest marked '3' and a measure rest marked '12'. The second staff has a measure rest marked '25' and a measure rest marked '4'. The third staff has a measure rest marked '7' and a measure rest marked '6'. The dynamic markings include *pianis.*, *pia*, *pianis*, and *dolce*.

Clarina  
Agnus dei  
forte

Claring  
dona nobis

Handwritten musical notation for the Clarina part. The notation includes notes, rests, and dynamic markings. The first staff has a measure rest marked '3' and a measure rest marked '14'. The second staff has a measure rest marked '3'. The third staff has a measure rest marked '14'. The dynamic markings include *forte*.

Finis