

# **Badische Landesbibliothek Karlsruhe**

**Digitale Sammlung der Badischen Landesbibliothek Karlsruhe**

## **Concertos - Don Mus.Ms. 1348**

**Moscheles, Ignaz**

**[S.l.], 1830 (1830c)**

Concertino

**urn:nbn:de:bsz:31-101938**



Concertino.

Moscheles.

Violino Primo

2  
 Adagio  $\text{♩} = \text{♩}$  6.  
*pp.*

*cres.* = = = *ff.* *ff.*

*pp.*

*pp.*

*i.*

*pp.* *cres.*

*pp.* *ff.*



Handwritten musical notation for the first system, consisting of four staves. The first staff is a treble clef with a key signature of one flat and a 7/8 time signature. The second and third staves are bass clefs. The fourth staff contains a few notes and rests.

*Allegretto Grazioso.*

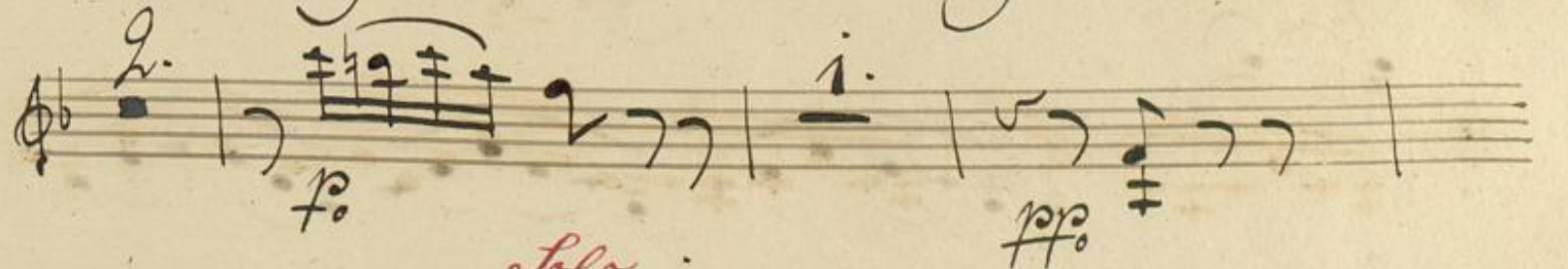
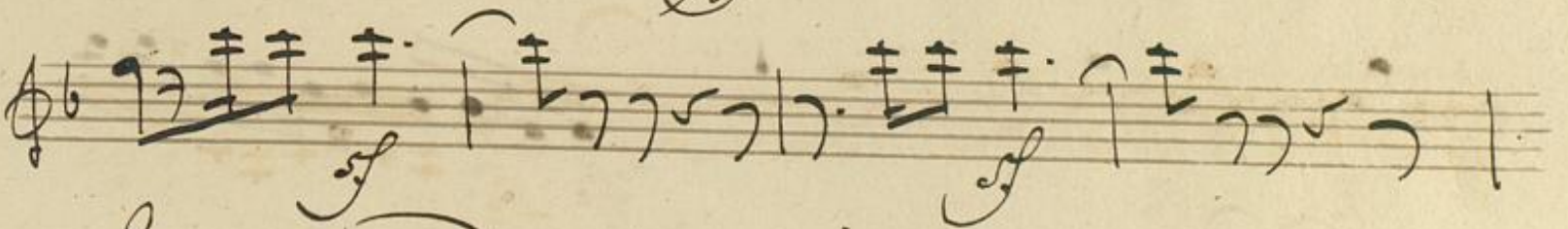
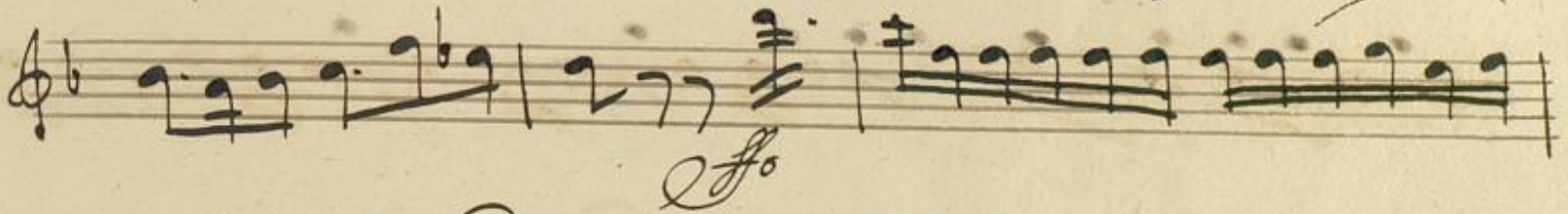
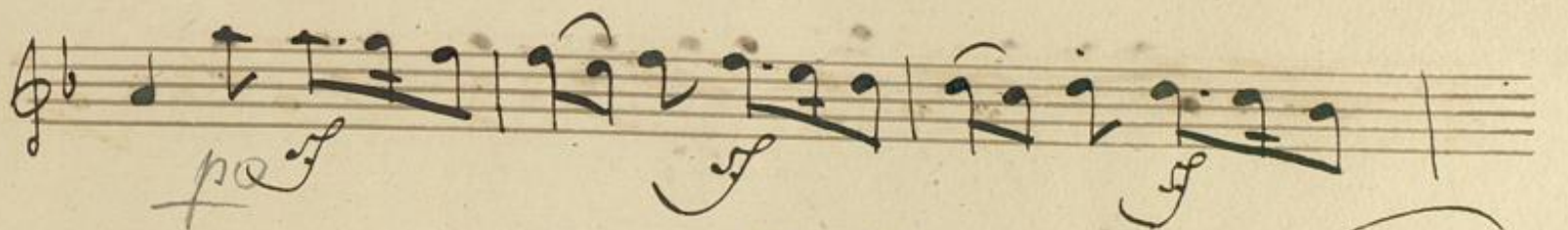
*Rondo.*  $\text{6/8}$   $f^o$

Handwritten musical notation for the Rondo section, consisting of ten staves. The first staff is a treble clef with a key signature of one flat and a 6/8 time signature. The following staves are bass clefs. The notation includes various rhythmic patterns and dynamics.



Handwritten musical score on ten staves. The notation includes treble clefs, a key signature of one flat, and various rhythmic values. The third staff contains the handwritten annotations "ritard." and "altempo." in red ink. The eighth staff features a "ff" dynamic marking. The score concludes with double bar lines and repeat signs on the final two staves.







A handwritten musical score on ten staves. The notation includes treble clefs, a key signature of one sharp (F#), and a time signature of 3/4. The score features various rhythmic patterns, including eighth and sixteenth notes, and rests. Handwritten annotations in red ink are present: *ff.* appears on the first, third, and fifth staves; *arco.* appears on the first and third staves; and *pp.* appears on the fifth staff. The manuscript shows signs of age, including some staining and ink bleed-through from the reverse side of the page.



A handwritten musical score consisting of ten staves. The notation is in a single system, likely for a single melodic line. The first staff begins with a treble clef and a key signature of one flat (B-flat). The music is written in a cursive, historical style. The notation includes eighth and sixteenth notes, rests, and various ornaments. Dynamic markings such as 'f' (forte) and 'p' (piano) are present. The score concludes with a double bar line and a final cadence symbol.



*poco ritard.*

*poco ritard.*

*a tempo.*

*a tempo.*

*pp*

*f* *Tutti.* *f*

*ff*



Handwritten musical notation on a single staff, featuring a treble clef, a key signature of one sharp (F#), and a 3/4 time signature. The notation includes eighth and sixteenth notes, some beamed together, and rests.

Handwritten musical notation on a single staff, continuing the piece with similar rhythmic patterns and melodic lines.

Handwritten musical notation on a single staff, showing a continuation of the melodic and rhythmic development.

Handwritten musical notation on a single staff, featuring some triplet markings above the notes.

Handwritten musical notation on a single staff, including a dynamic marking of *f* (forte) written in a decorative script.

Handwritten musical notation on a single staff, showing a series of chords and melodic fragments.

Handwritten musical notation on a single staff, featuring a red 'X' mark over a measure and a red *Dim:* (diminuendo) marking.

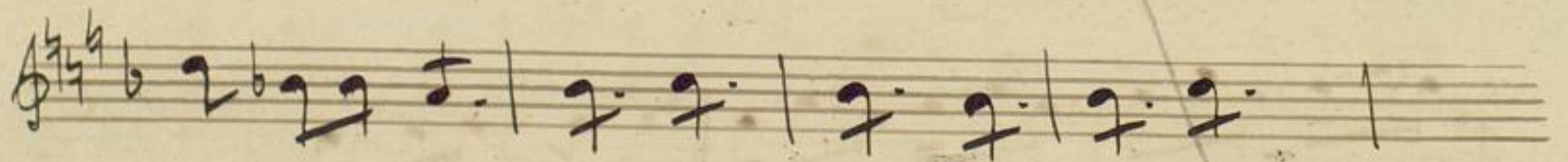
Handwritten musical notation on a single staff, with a large diagonal line crossing through the page from the 'X' mark down to the bottom.

Handwritten musical notation on a single staff, including a dynamic marking of *f* (forte).

Handwritten musical notation on a single staff, featuring a red *Solo* marking and a dynamic marking of *f* (forte).

Handwritten musical notation on a single staff, appearing to be a continuation or a separate section of the piece.







*eres = = = = =*

Musical staff with notes and rests.

Musical staff with notes and rests.

Musical staff with notes and rests.

Musical staff with notes and rests.

Musical staff with notes and rests.

Musical staff with notes and rests.

Musical staff with notes and rests.

Musical staff with notes and rests.

Empty musical staves at the bottom of the page.

*Staccato*

*ritard.*

*ff*

*altempo*

*Tutti*

*ff. alleg.*



Handwritten musical score on ten staves. The notation includes various note values, rests, and dynamic markings such as *ff* and *f*. A red *Fatti* marking is present on the eighth staff, and a *3.* marking is on the ninth staff. The manuscript shows signs of age and wear.



Handwritten musical notation on a single staff, featuring a treble clef, a key signature of one flat, and a 3/4 time signature. The notes are: G4, A4, B4, C5, B4, A4, G4, F4, E4, D4, C4.

Handwritten musical notation on a single staff, featuring a treble clef, a key signature of one flat, and a 3/4 time signature. The notes are: G4, A4, B4, C5, B4, A4, G4, F4, E4, D4, C4.

Handwritten musical notation on a single staff, featuring a treble clef, a key signature of one flat, and a 3/4 time signature. The notes are: G4, A4, B4, C5, B4, A4, G4, F4, E4, D4, C4.

Handwritten musical notation on a single staff, featuring a treble clef, a key signature of one flat, and a 3/4 time signature. The notes are: G4, A4, B4, C5, B4, A4, G4, F4, E4, D4, C4.

Handwritten musical notation on a single staff, featuring a treble clef, a key signature of one flat, and a 3/4 time signature. The notes are: G4, A4, B4, C5, B4, A4, G4, F4, E4, D4, C4. Includes a forte (f) dynamic marking.

Handwritten musical notation on a single staff, featuring a treble clef, a key signature of one flat, and a 3/4 time signature. The notes are: G4, A4, B4, C5, B4, A4, G4, F4, E4, D4, C4. Includes a triplet of eighth notes and a forte (f) dynamic marking.

Handwritten musical notation on a single staff, featuring a treble clef, a key signature of one flat, and a 3/4 time signature. The notes are: G4, A4, B4, C5, B4, A4, G4, F4, E4, D4, C4. Includes a first ending bracket and a forte (f) dynamic marking.

Handwritten musical notation on a single staff, featuring a treble clef, a key signature of one flat, and a 3/4 time signature. The notes are: G4, A4, B4, C5, B4, A4, G4, F4, E4, D4, C4. Includes a fermata over the final note.

Two empty musical staves at the bottom of the page.



*Tutti.*

*f*

*f*

*f*

*pizz.*

*i.*  
*arco.*

*pizz.*

*f*

*Fine.*