

Badische Landesbibliothek Karlsruhe

Digitale Sammlung der Badischen Landesbibliothek Karlsruhe

Vespers - Don Mus.Ms. 1349

[S.l.], 1757 (1757c)

Violine II

urn:nbn:de:bsz:31-101941

Violin Secondo

Vesp. S. B. V. Maria. Anno 1749

Allegro

Solo
 Domine ad Adin:

Sicut

Solo
 Dixit Dominus

Solo

Solo

Solo
 Laudate pueri.

Solo

Musical staff with treble clef, key signature of one sharp (F#), and 4/4 time signature. The staff contains a series of rhythmic patterns, primarily eighth and sixteenth notes, with some rests.

Musical staff with treble clef, key signature of one sharp (F#), and 4/4 time signature. The staff contains a series of rhythmic patterns, primarily eighth and sixteenth notes, with some rests. The word *genio* is written below the staff.

Musical staff with treble clef, key signature of one sharp (F#), and 4/4 time signature. The staff contains a series of rhythmic patterns, primarily eighth and sixteenth notes, with some rests. The word *sicut erat* is written below the staff.

Musical staff with treble clef, key signature of one sharp (F#), and 4/4 time signature. The staff contains a series of rhythmic patterns, primarily eighth and sixteenth notes, with some rests.

Musical staff with treble clef, key signature of one sharp (F#), and 4/4 time signature. The staff contains a series of rhythmic patterns, primarily eighth and sixteenth notes, with some rests. The word *status sum* is written below the staff.

Musical staff with treble clef, key signature of one sharp (F#), and 4/4 time signature. The staff contains a series of rhythmic patterns, primarily eighth and sixteenth notes, with some rests.

Musical staff with treble clef, key signature of one sharp (F#), and 4/4 time signature. The staff contains a series of rhythmic patterns, primarily eighth and sixteenth notes, with some rests.

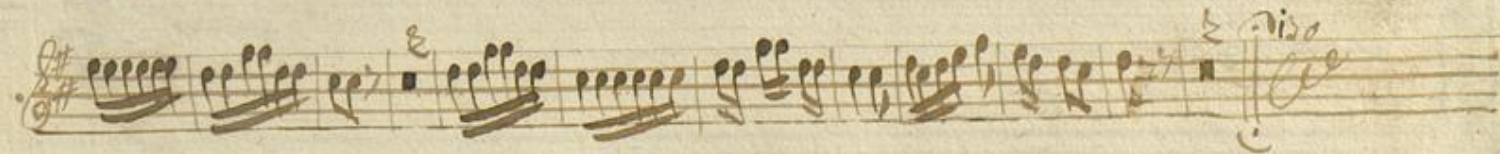
Musical staff with treble clef, key signature of one sharp (F#), and 4/4 time signature. The staff contains a series of rhythmic patterns, primarily eighth and sixteenth notes, with some rests. The words *gloria patri* and *in unum* are written below the staff.

Musical staff with treble clef, key signature of one sharp (F#), and 4/4 time signature. The staff contains a series of rhythmic patterns, primarily eighth and sixteenth notes, with some rests.

Musical staff with treble clef, key signature of one sharp (F#), and 4/4 time signature. The staff contains a series of rhythmic patterns, primarily eighth and sixteenth notes, with some rests. The word *Nisi* is written below the staff.

Musical staff with treble clef, key signature of one sharp (F#), and 4/4 time signature. The staff contains a series of rhythmic patterns, primarily eighth and sixteenth notes, with some rests.

Musical staff with treble clef, key signature of one sharp (F#), and 4/4 time signature. The staff contains a series of rhythmic patterns, primarily eighth and sixteenth notes, with some rests.



Magnificat

de quibus

Quia fecit

Adagio: gloria patri

ii. Tut. H. sinueral

Alte regina

Musical notation on a five-line staff.

Musical notation on a five-line staff.

9 *rit.* *93*
Musical notation on a five-line staff.

Allegro
in ergo
Musical notation on a five-line staff.

Musical notation on a five-line staff.

26
finis
Musical notation on a five-line staff.

Empty musical staff.

Empty musical staff.

Empty musical staff.

Empty musical staff.

Empty musical staff.

Empty musical staff.

Empty musical staff.

This page contains ten blank musical staves. On the left margin, there are several clefs and a key signature: a soprano clef, an alto clef, a tenor clef, a bass clef, and a key signature of one sharp (F#). The paper is aged and shows some staining.