

Badische Landesbibliothek Karlsruhe

Digitale Sammlung der Badischen Landesbibliothek Karlsruhe

Kantate den Gefallenen zum Gedächtnis, den Trauernden zum Trost

Baumann, Ludwig

Karlsruhe, [1928]

Violine I [3. Exemplar]

urn:nbn:de:bsz:31-103825

1. Violine.

II

Kantate.

Den Gefallenen zum Gedächtnis, den Trauernden zum Trost.
von Ludwig Baumann.

Vorspiel tacet.

1. Chor

Ernst, gemessen.

Viola.

p

f

cresc.

ff

p

ff

Lebhafter.

p

rit.

dolce.

10

5

6

Musikverlag Fritz Müller Karlsruhe.



— 1. Violine —

Handwritten musical notation on a single staff. It begins with a treble clef and a key signature of one sharp (F#). The music consists of several chords and a melodic line. Dynamics include *f* (forte) and *p* (piano). There are markings for *pizz.* (pizzicato) and a first ending bracket labeled '2'. A measure number '6' is written at the end of the staff.

Handwritten musical notation on a single staff. It starts with *arco.* (arco) and *p* (piano). The music features a melodic line with some grace notes and a dynamic shift to *f* (forte). It ends with a *ff* (fortissimo) dynamic marking.

Handwritten musical notation on a single staff. It begins with *p* (piano) and *f* (forte) dynamics. The music includes a *ff* (fortissimo) dynamic and ends with a *p* (piano) dynamic marking.

Handwritten musical notation on a single staff. It starts with *pp* (pianissimo) and includes a triplet of eighth notes. There is a first ending bracket labeled '3' and a *Rascher.* (Ritardando) marking. The staff concludes with *f* (forte) and *pizz.* (pizzicato) markings.

Handwritten musical notation on a single staff. It begins with *arco* (arco) and *rit.* (ritardando). The music features a melodic line with a *Tempo f.* (Tempo forte) marking and ends with a *dolce* (dolce) dynamic marking.

Handwritten musical notation on a single staff. It features a melodic line with a *pp* (pianissimo) dynamic marking.

Handwritten musical notation on a single staff. It starts with *pp* (pianissimo) and includes a *die.* (diminuendo) marking. The music consists of several chords.

Handwritten musical notation on a single staff. It begins with *sf* (sforzando) and includes a first ending bracket labeled '4'. The staff ends with a *pizz.* (pizzicato) and *pp* (pianissimo) dynamic marking.

Handwritten musical notation on a single staff. It features a melodic line with eighth notes.

Four empty musical staves at the bottom of the page.

Adcet 2. Frauenchor

[5] (ad libitum.)

pp

ed.

Detailed description: This system contains three staves of music. The first staff begins with a boxed number '5' and the instruction '(ad libitum.)'. It features a treble clef, a key signature of three flats (B-flat, E-flat, A-flat), and a common time signature. The music starts with a 3/4 time signature and includes various rhythmic values such as eighth and sixteenth notes, along with rests. The dynamic marking 'pp' is placed below the first staff. The second and third staves continue the musical line with similar notation and dynamics.

3. Recitativ.

Adcet

[6]

Pos. p

attacca.

Detailed description: This system contains two staves of music. The first staff begins with a boxed number '6' and the instruction '*Adcet*'. It features a treble clef, a key signature of three flats, and a common time signature. The music includes rests and notes with stems. The dynamic marking 'p' is placed below the first staff. The second staff continues the musical line and ends with a 3/4 time signature and the instruction 'attacca.'.

4. Arie.

[7]

Flöten.

p

Detailed description: This system contains two staves of music. The first staff begins with a boxed number '7'. It features a treble clef, a key signature of three flats, and a 3/4 time signature. The music includes rests and notes with stems. The dynamic marking 'p' is placed below the first staff. The second staff continues the musical line with similar notation and dynamics.

- 1. Violine -

4

7

p *f* *p*

pizz [8]

arco. V *p*

p

mf *p* [9]

f *p*

f

poco rit. *p*

5 Frauenchor

[10]

con Sord. *pp*
Orgel. *Chor*

Musical staff with notes and rests. The notes are mostly whole notes and half notes, with some rests. The key signature has two flats (B-flat and E-flat).

6. Recitativ.

77 *senza Sord.* *rit.*

Musical staff for Recitativo. It starts with a treble clef and a key signature of two flats. The tempo is marked 'rit.' (ritardando). There are dynamic markings 'f' and 'p'.

7. Chor

Andante. *Chor*
Ob ich schon

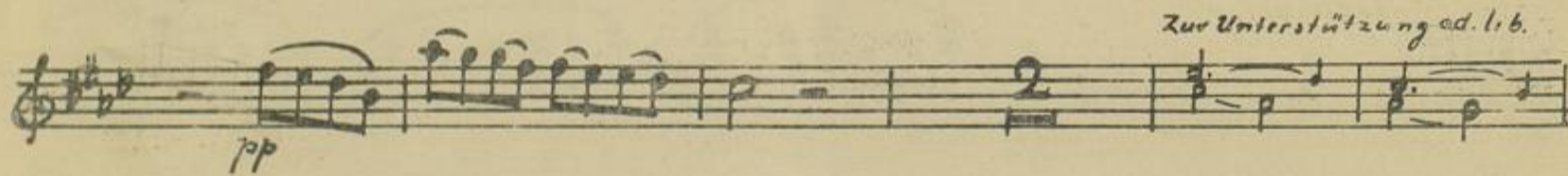
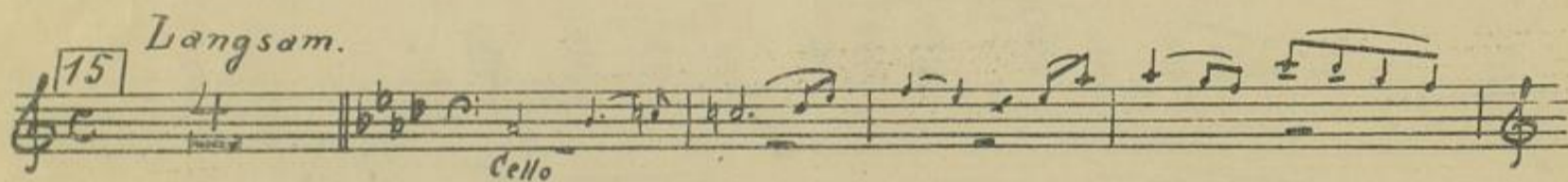
Musical staff for Chorus. It starts with a treble clef and a key signature of two flats. The tempo is marked 'Andante.' The lyrics are 'Ob ich schon'. There are dynamic markings 'f', 'p', and 'pp'.

Liebhaber.

Musical staff for Liebhaber. It starts with a treble clef and a key signature of two flats. The tempo is marked 'Liebhaber.' There are dynamic markings 'p' and 'pp'.



8. Frauenchor.



poco rit.

pp

ad lib.

ppp

9. Recitativ

Allegro

Langsamer.

tempo

langsamer.

ff

pp

f

p

f

p

f

pp

f

p

f

attacca.

10. Choral.

Choralmäßig.

ausdrucksvoll

ff

p

p

1. Violine

Handwritten musical score for Violin I, page 8. The score consists of four staves of music in treble clef. The first staff begins with a dynamic marking 'f' and a first ending bracket with a '2'. The second staff ends with a dynamic marking 'ff'. The third staff contains several chords and ends with a dynamic marking 'p'. The fourth staff begins with a dynamic marking 'pp' and ends with a signature 'K. Lehn'. There are also some handwritten annotations like 'V' and '□' above the notes in the fourth staff.

