

Badische Landesbibliothek Karlsruhe

Digitale Sammlung der Badischen Landesbibliothek Karlsruhe

Kantate den Gefallenen zum Gedächtnis, den Trauernden zum Trost

Baumann, Ludwig

Karlsruhe, [1928]

Viola

urn:nbn:de:bsz:31-103825

Viola.

Kantate

Den Gefallenen zum Gedächtnis, den Trauernden zum Trost.

von Ludwig Baumann.

Vorspiel tacet.

1. Chor.

Ernst, gemessen.

Cello

pp

cresc.


f

p *ff* *ff*

f *p* *p* *rit.*

Lebhafter.

p *f*

Musikverlag  F. Metz Müller Karlsruhe.

Handwritten musical notation for Viola, first staff. It begins with a dynamic marking of *f* (forte) and a *pizz.* (pizzicato) instruction. A bracketed number '2' is above the staff. The dynamics shift to *p* (piano) and then *pp* (pianissimo) with an *arco* (arco) instruction.

Handwritten musical notation for Viola, second staff. It starts with *pp* and ends with *p*. A dynamic crescendo is indicated by a hairpin.

Handwritten musical notation for Viola, third staff. It begins with *f* and ends with *p*. A dynamic decrescendo is indicated by a hairpin.

Handwritten musical notation for Viola, fourth staff. It includes a triplet marked with a bracketed '3' and the tempo marking *Rascher.* (Ritardando). Dynamics include *pp* and *mf* (mezzo-forte).

Handwritten musical notation for Viola, fifth staff. It features a *rit. Tempo!* (ritardando) marking and ends with a *pizz.* instruction. Dynamics include *pp* and *p*.

Handwritten musical notation for Viola, sixth staff. It begins with an *arco* instruction and a *pp* dynamic marking.

Handwritten musical notation for Viola, seventh staff. It starts with a *divisi* instruction and ends with a *sf* (sforzando) dynamic marking.

Handwritten musical notation for Viola, eighth staff. It begins with a bracketed number '4' and ends with a *pizz.* instruction and the word *attaca.*

2. Frauenchor

Handwritten musical notation for the women's choir. It starts with a bracketed number '5', a key signature of three flats, and a common time signature. The lyrics are "fol-gen ih-nen nach!".

3 Recitativ

6
Pos. *p*

4 Arie

7
2 Viol. *p*

8
pp

5
pp

4.

- Viola -

Musical score for Viola, measures 7-9. The key signature is B-flat major (two flats). Measure 7 starts with a 3/4 time signature and a *mf* dynamic. Measure 8 has a 4/4 time signature. Measure 9 is marked with a box containing the number 9. The score includes various note values, rests, and slurs.

5. Frauenchor.

Musical score for Frauenchor, measures 10-11. Measure 10 is marked with a box containing the number 10 and includes the instruction *Orgel.* and *Chor.*. Measure 11 includes the instruction *con Sord.* and a *pp* dynamic. The score features chords and rests. Measure 11 ends with the instruction *attacca.*

6. Recitativ.

Musical score for Recitativ, measures 11-12. Measure 11 is marked with a box containing the number 11 and includes a *p* dynamic. Measure 12 includes the instruction *rit.* and *senza Sord.*. The score consists of long notes and rests. Measure 12 ends with the instruction *attacca.*

7. Chor

[12] *Andante.*

Musical score for Viola, measures 12-13, *Andante* tempo. The score consists of four staves. The first staff begins with a dynamic marking of *p* and a *v* (vibrato) marking. It features a melodic line with slurs and accents, and dynamic markings of *sf* (sforzando) and *f* (forte). The second staff continues the melodic line with slurs. The third staff contains a rhythmic accompaniment with slurs and dynamic markings of *f* and *p*. The fourth staff continues the melodic line with slurs and dynamic markings of *f* and *p*.

Lebhafter.

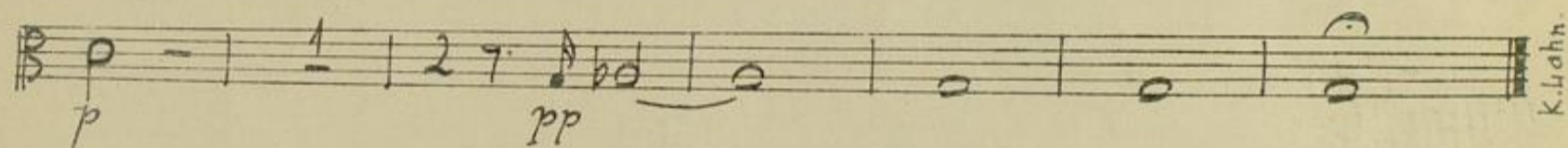
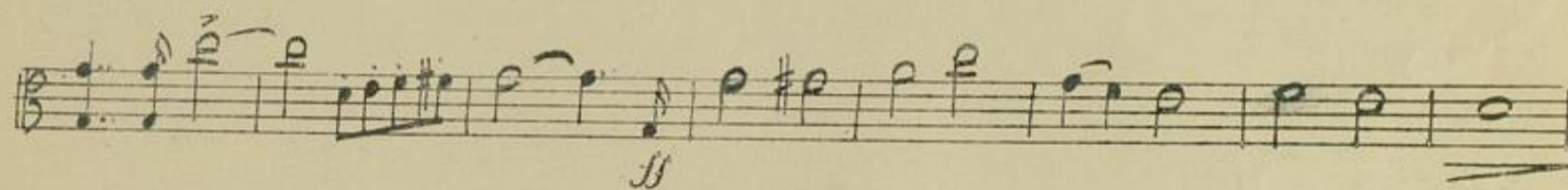
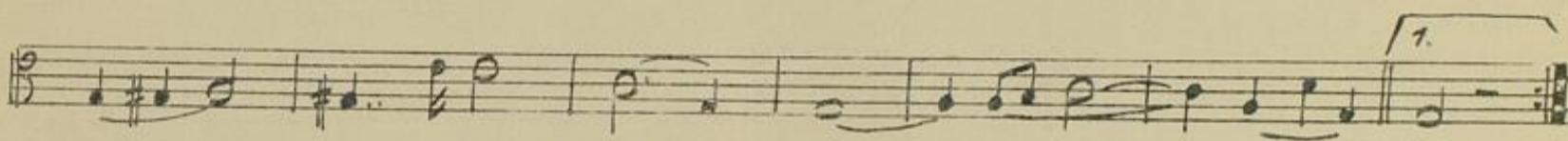
[13] *2. Viol.*

Musical score for Viola, measures 13-14, *Lebhafter* tempo. The score consists of four staves. The first staff begins with a dynamic marking of *p* and a *9* (fingerings) marking. It features a melodic line with slurs and accents, and dynamic markings of *f* and *p*. The second staff contains a rhythmic accompaniment with slurs and dynamic markings of *f* and *p*. The third staff continues the melodic line with slurs and dynamic markings of *f* and *p*. The fourth staff continues the melodic line with slurs and dynamic markings of *f* and *p*.

8. Frauenchor.

9. Recitativ

10. Choral.



K. Lahn



