

# **Badische Landesbibliothek Karlsruhe**

**Digitale Sammlung der Badischen Landesbibliothek Karlsruhe**

## **Kantate den Gefallenen zum Gedächtnis, den Trauernden zum Trost**

**Baumann, Ludwig**

**Karlsruhe, [1928]**

Bass

**urn:nbn:de:bsz:31-103825**

# Bass.

## Kantate

Den Gefallenen zum Gedächtnis, den Trauernden zum Trost.  
von Ludwig Baumann.

### Vorspiel tacet

#### 1. Chor.

Ernst, gemessen

pp

cresc.

f

ff

p

f

Lebhafter.

pizz

p

arco.

Musikverlag  Rittmüller Karlsruhe.

*pizz.*  
*f*

*arco*  
*pp*

*f* *p*

*f* *p* *f*

*p* *pp* *f*

*Rascher.*  
*pizz.*

*rit. Tempol.*

*f* *p* *ppp*

*arco*  
*ppp*

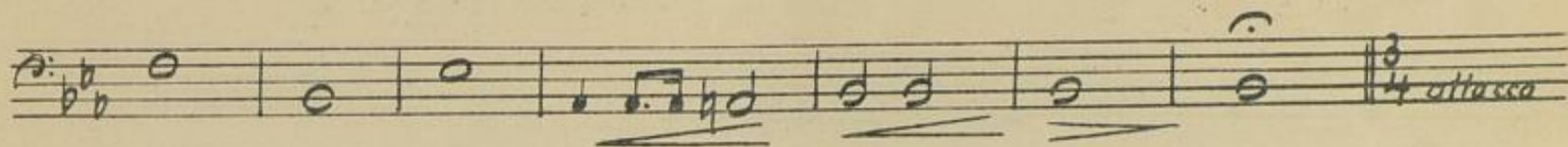
*4* *pizz.*  
*sf* *attacca.*

2. Frauenchor

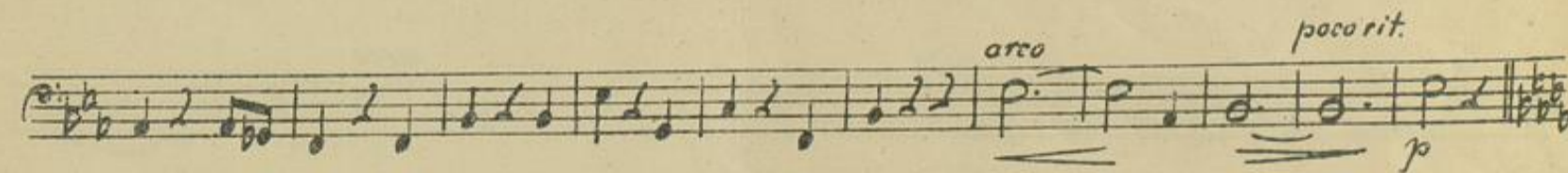
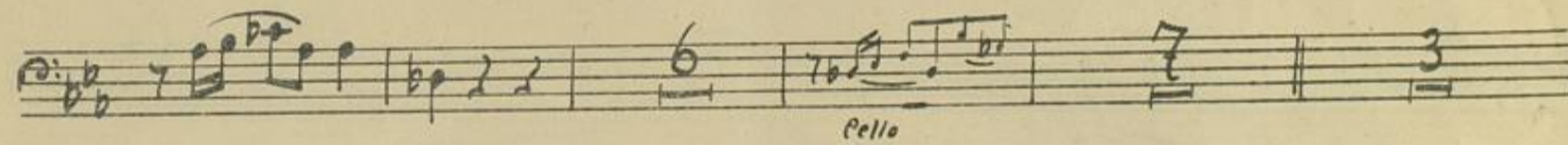
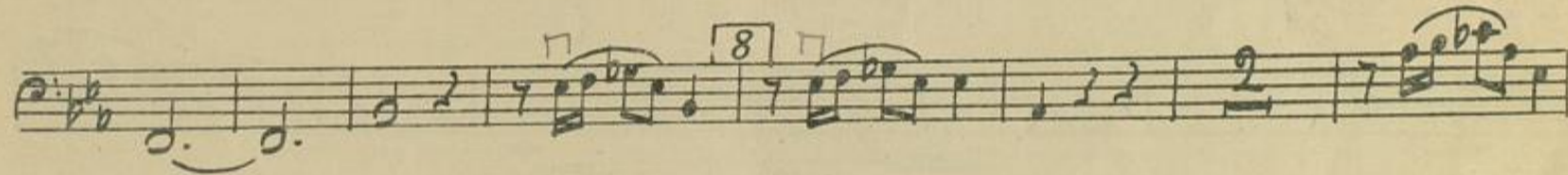
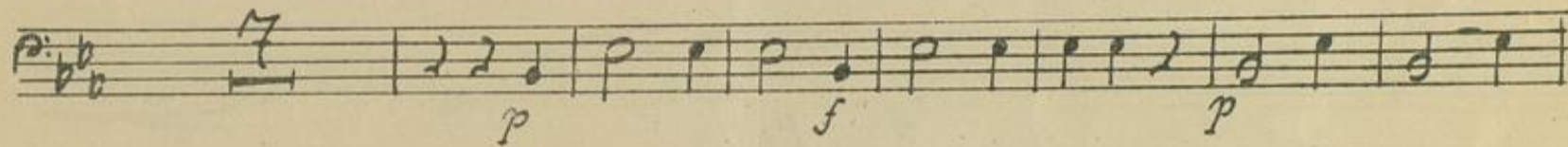
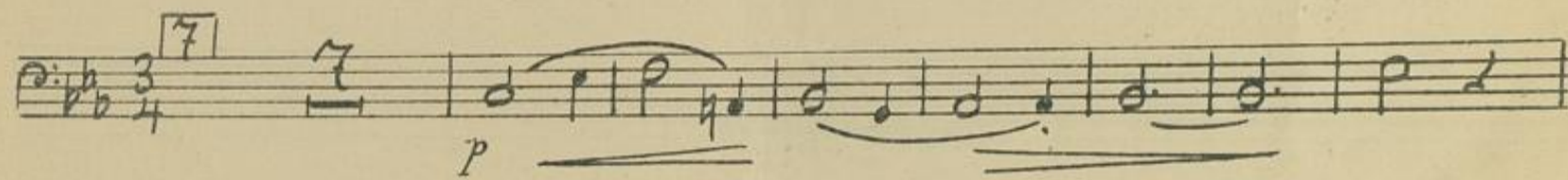
*5* *Chor.*  
*folgen ih-nen mach* *attacca.*

3. Recitativ

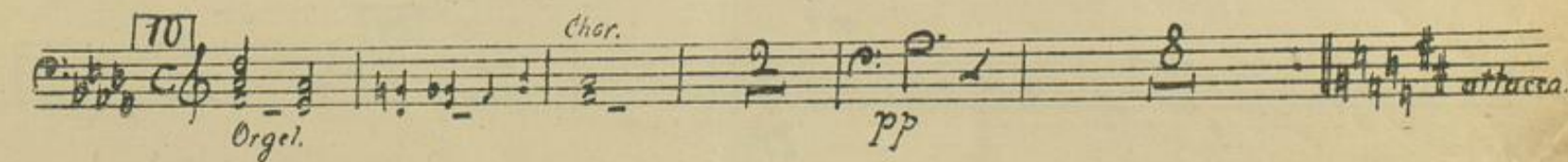
*6* *pp.*  
*Pos.* *p*



4. Arie



5. Frauenchor



6. Recitativ

11 *pizz.* *rit.*  
*Pos.* *p* *pp*

7. Chor

*Andante.*

12 *p sf* *sf* *p*

*Liebhafter*

13 *pizz.* *arco* *pizz.* *arco* *rit.* *pp* 14 74

pp f

rit.

attacca

p

8. Frauenchor

*Sal.* Langsam.

[15] poco rit

ppp Chor.

folgen ihnen nach.

9. Recitativ

[16] Allegro

p ff

Langsamer. tempo.

Langsamer.

pp ff pp f pp

pizz.

arco

pp

f

p

attacca

V.S.

10. Choral.

*Choralmäßig.*

17

*p* *cresc.* *ff*

*pp* *p*

1. 2.

*p* *f*

*f* *p*

*pp* K. Bahn







