

Badische Landesbibliothek Karlsruhe

Digitale Sammlung der Badischen Landesbibliothek Karlsruhe

2 Offertories - Don Mus.Ms. 1453

[S.l.], 1780 (1780c)

Alt

urn:nbn:de:bsz:31-104861

Offertorium I.

Alto.

Mus. No. 1453

Terzetto.

18.

Andante. Salve Sal-ve = Je-su salve Cor-dis gaudi-um

salve Cor-dis = gaudium salve = pectoris in- cendium salve salve

Je-su sal-ve = Je-su salve = Je-su a =

= = = ni-mo profidi-um venisponse venisponse care ve-mi

sponse venisponse venisponse care venispon- se venisponse

Je-su sponse veni Je-su sponse veni

lacta me li-beribus Cor-li = ques-cet merge me vis Ceribus

spes vire = scet Nichil est suavis Nichil est dulcis

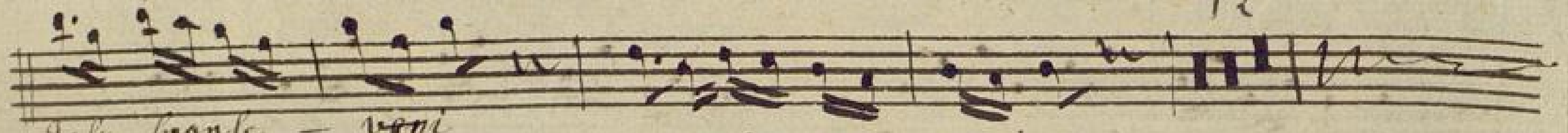
suavis amor suavis = amor suavis amor o

dul- cis o sua = vis o sponse dulcis amor



ve ni sponse veni sponse care sponse = veni veni sponse

12

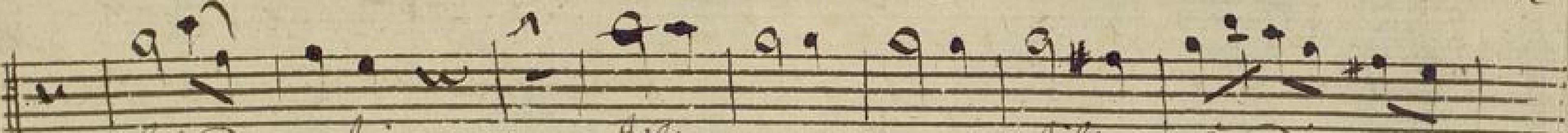


Jesu sponse - veni
Offertorium. II Jesu sponse veni

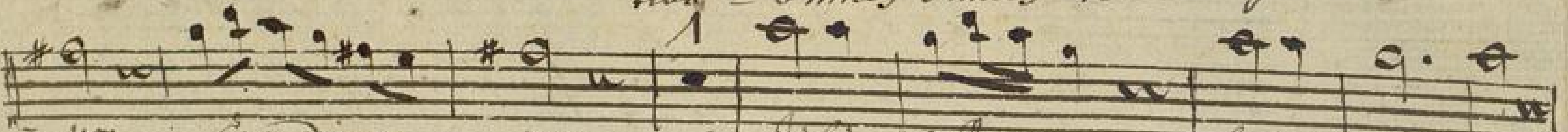
16



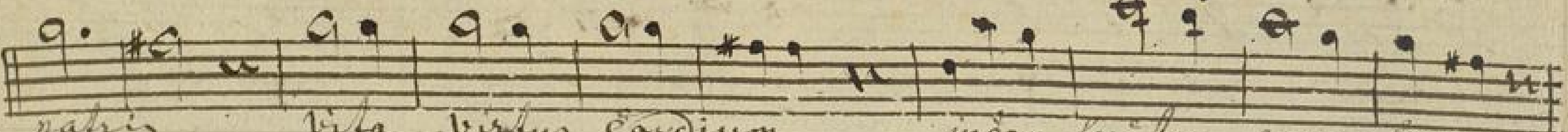
Tibi = xste splendor patris Tibi xste
Te = lau = damus Deum lau damus Te do = minum



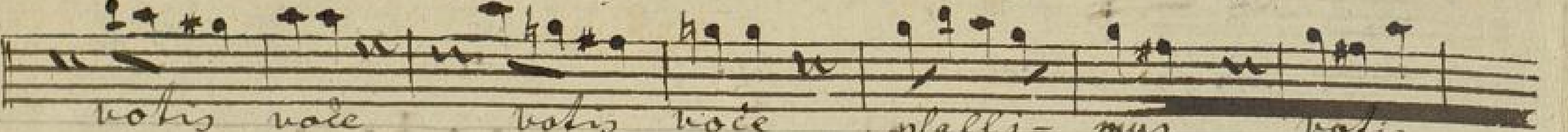
splendor patris Confitemur
Tibi xste splendor patris
Tibi = omnes omnes Tibi ange =



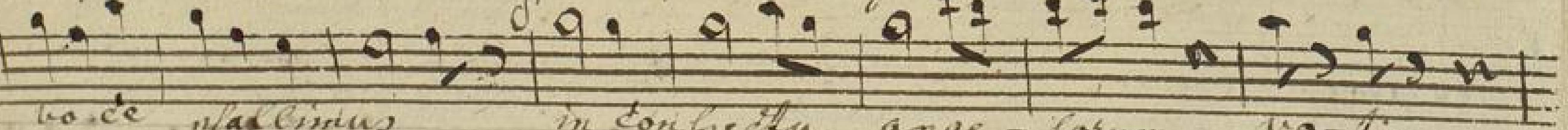
um Cor dium = um Tibi xste splendor splendor
= li ange = = li Tibi Cherubim fera = phina



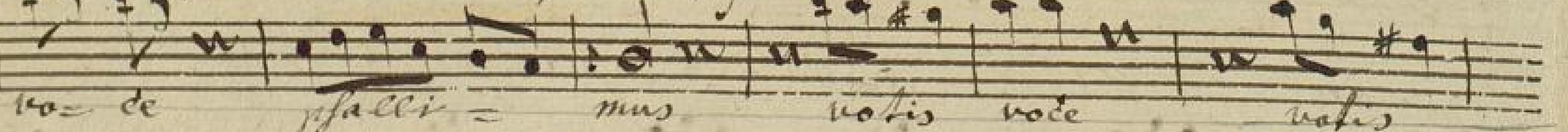
patris vita virtus cordium in ceptu ange = corum
seraphim in = ces = fa = bili in ces = sabili pro clamant



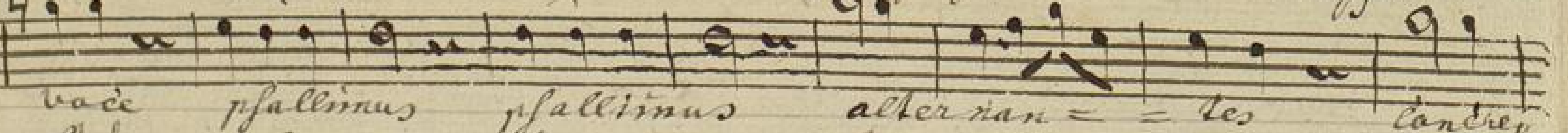
voce voce voce psallimus voce
sanctus sanctus sanctus sanctus sanctus dominus dominus



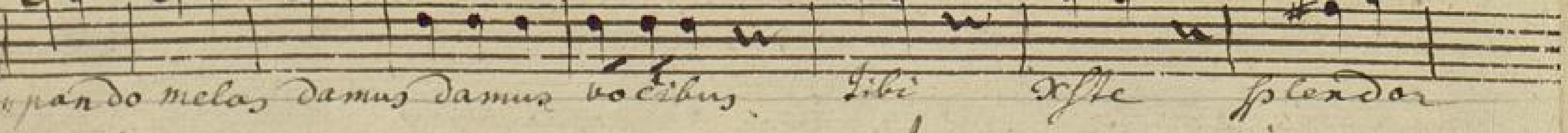
voce psallimus in conspectu ange = corum vo = tis
deus sa ba = oth pleni pleni sunt celi coe = li



vo = ce psalli = mus voce voce voce
coe li et = ter = ra Magna stas Magna =



voce psallimus psallimus alter nan = = tes canen
= stas gloria In = a = se glori = ofus a =



pan do melas damus damus vo cibus Tibi xste splendor
= postolorum chorus chorus chorus patrem = in =