

Badische Landesbibliothek Karlsruhe

Digitale Sammlung der Badischen Landesbibliothek Karlsruhe

2 Offertories - Don Mus.Ms. 1453

[S.l.], 1780 (1780c)

[1.] Salve Jesu cordis gaudium. A-Dur

urn:nbn:de:bsz:31-104861

Offertorium I.

Soprano.

ms. no 1452

Terzetto. 18. S.

Andante. Salve, Sal - ve Jesu, Jesu cordis gaudi - um;

Salve cordis gaudium, pectoris in - cendium. Salve Jesu,

Sal - ve Je - su, Sal - ve Jesu a - - - nima

profidi - um. veni Sponse Care sponse, Care Sponse veni veni

Sponse, veni Sponse Care sponse veni, veni sponse veni Sponse.

Jesu Sponse - veni Jesu Sponse veni lacta me u -

beribus cor lique - scet, merge me visceribus Spes vire fecit

Nihil te est suavius, nihil te est dulcius, suavis amor,

Sua - vis amor, Sua - vis amor, ô dul - cis, ô Sua - vis, ô

Jesu dulcis Amor! veni sponse, veni sponse Care sponse veni, veni sponse, veni

Sponse Jesu Sponse veni, Jesu Sponse veni.

Offertorium I.

Alto.

Mus. No. 1453

Terzetto.

18.

Andante. Salve Sal-ve = Je-su salve Cor-dis gaudi-um

salve Cor-dis = gaudium salve = pectoris in- = cendium salve salve

Je-su sal-ve = Je-su salve = Je-su a =

= = = ni-mo profidi-um venisponse venisponse care ve-mi

sponse venisponse venisponse care venispon- = se venisponse

Je-su sponse veni Je-su sponse = veni

lacta me li-beribus Cor-li = ques- cet merge me vis Ceribus

spes vire = scet Nichil est suavis Nichil est dulcis

suavis amor suavis = amor suavis amor o

dul- = cis o sua = = vis o sponse dulcis amor

ve mi sponse veni sponse care sponse = veni veni sponse

Jesu sponse = veni
 Offertorium. II Jesu sponse veni

Tibi = xpte splendor patris Tibi xpte
 Te = lau = damus Deum lau damus Te do = minum

splendor patris Confitemur
 Tibi xpte splendor patris
 Tibi = omnes omnes Tibi ange =

um corde = um Tibi xpte splendor splendor
 = li ange = = li Tibi Cherubim fera = phina

patris vita virtus cordium in ce = sa = bili
 seraphim in = ces = fa = bili in ce = sabili pro clamant

vobis voce vobis voce psalli = mus vobis
 sanctus sanctus sanctus sanctus sanctus dominus Dominus

voce psallimus in conspectu ange = lorum vo = tis
 deus sabaoth pleni pleni sunt celi coe = li

vo = ce psalli = mus vobis voce vobis
 coe li et = ter = ra Magna stas Magna =

vocē psallimus psallimus alter nan = = tes canentes
 = stas gloria In = a = se glori = osus a =

pando melas damus damus vobis Tibi xpte splendor
 = postolorum chorus chorus chorus patrem in =

Offertorium I.

Terzetto.

~~Organo~~ Basso.

Mus No 1453

9.

Andante. Salve Cordis gaudium Salve Cordis gaudi

um Salve Salve Salve Cordis gaudium

14. millies te cogito millies te cogito veni

Sponse Care sponse veni veni Care sponse veni veni veni

9. Jesu sponse veni Jesu sponse veni pasce me vulne-

ri = bus pasce me vulneribus pasce me vulneribus

mens dul = ces = cet Dulces = cet mens dul = ces = cet dul

ces = cet Rigeo ac = cende me rigeo accende

me languo languo Consolare me

14. veni sponse Jesu sponse veni sponse Jesu sponse

veni Jesu sponse veni

Offertorium I.

Violino I^{mo}.

Amo MDCCLV

Terzetto.

Andante.

Handwritten musical notation on five staves. The notation includes various rhythmic values such as eighth and sixteenth notes, often beamed together. There are also some slurs and dynamic markings. The paper shows signs of age and wear.

Cyffertorium II

Chorus

Handwritten musical notation for the Chorus section. It begins with a treble clef, a key signature of one sharp (F#), and a 2/4 time signature. The notation consists of a series of notes, some with stems pointing down, and includes some rests.

Handwritten musical notation on ten staves. The notation continues with various rhythmic patterns, including groups of beamed notes and some slurs. The handwriting is consistent with the rest of the page, and the paper shows some staining and foxing.

Terzetto. Tempo giusto

Violino II

Offeratorium I

Mus. An. 1453

1

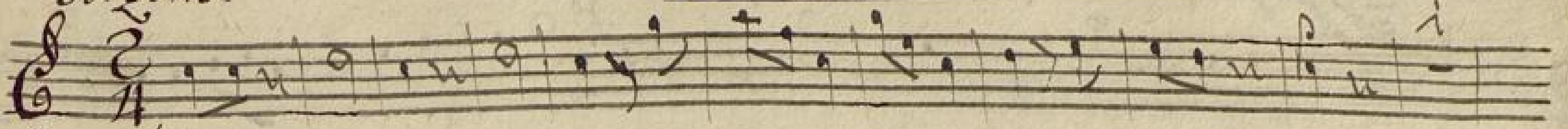
This page contains a handwritten musical score for Violino II. It consists of 15 staves of music. The notation includes various rhythmic values, slurs, and dynamic markings. Key annotations include:

- Tempo giusto** at the top left.
- Violino II** as the instrument title.
- Offeratorium I** as the piece title.
- Mus. An. 1453** as a reference number.
- 1** in the top right corner.
- 2** in the first staff, indicating a second ending.
- bis** markings appearing on the 4th, 8th, 10th, and 14th staves.
- p** (piano) marking on the 2nd staff.
- 6** marking on the 3rd staff.
- 6** marking on the 4th staff.
- 6** marking on the 11th staff.
- 6** marking on the 12th staff.
- 6** marking on the 13th staff.
- 6** marking on the 14th staff.
- 6** marking on the 15th staff.

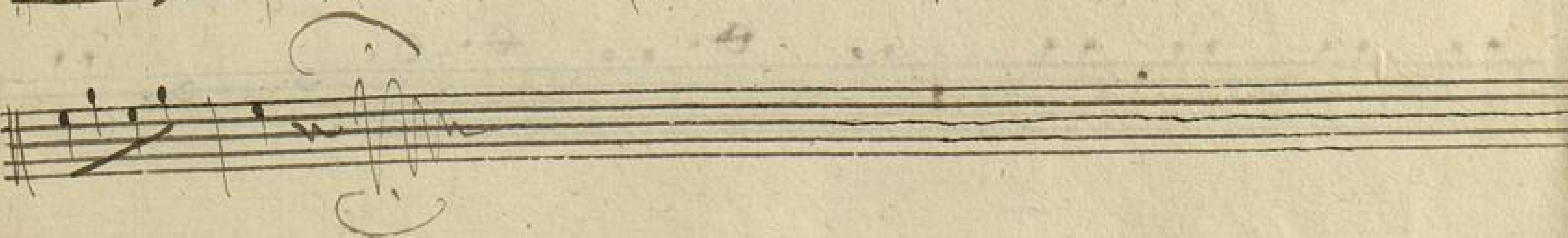
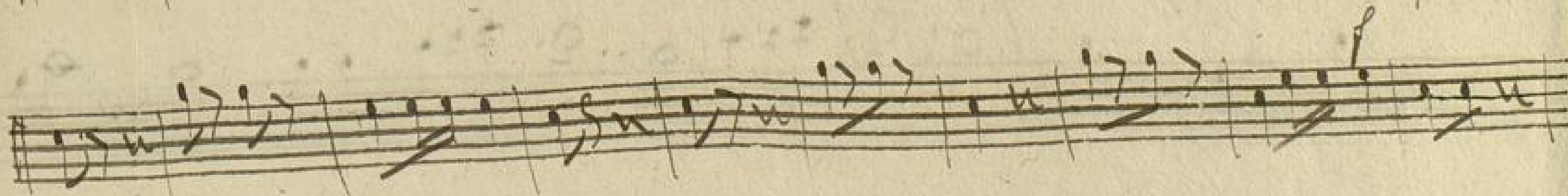
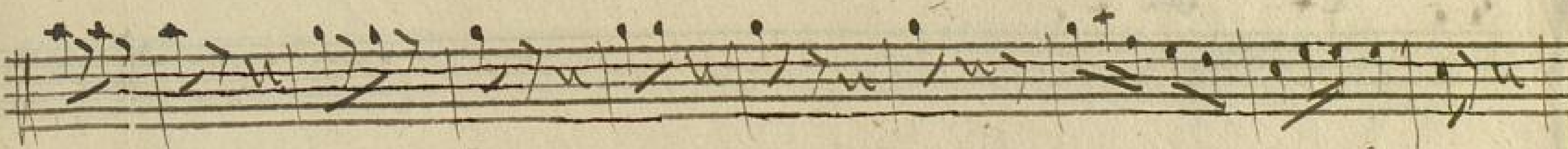
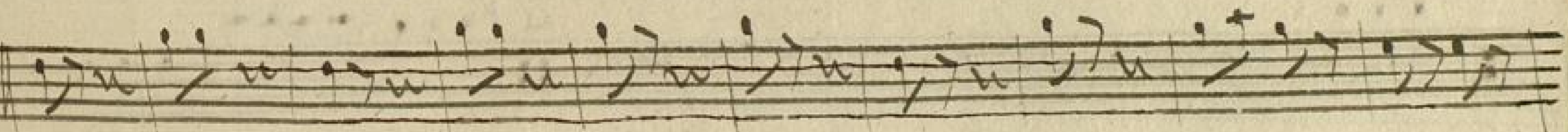
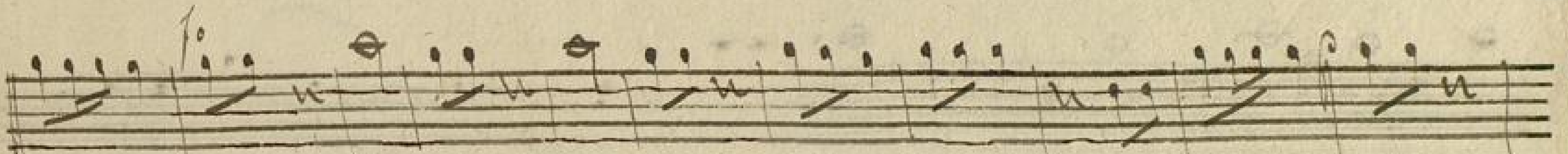
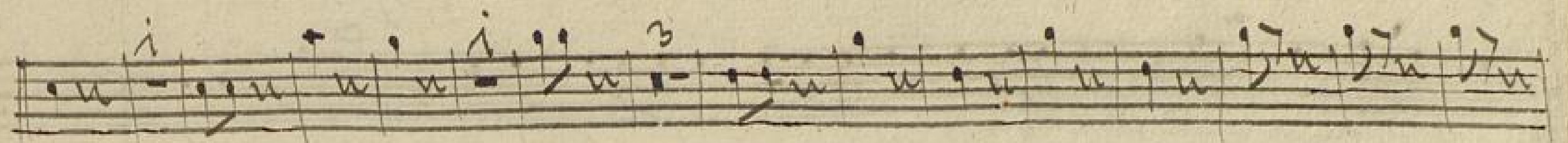
Offertorium I.

Corno 1^{mo} Ex A. *Ann. No 1453*

Terzetto.



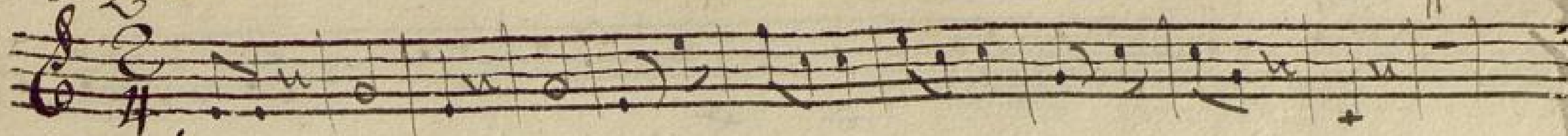
Andante.



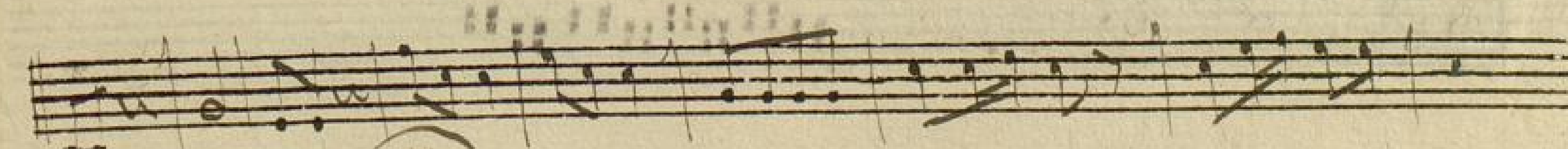
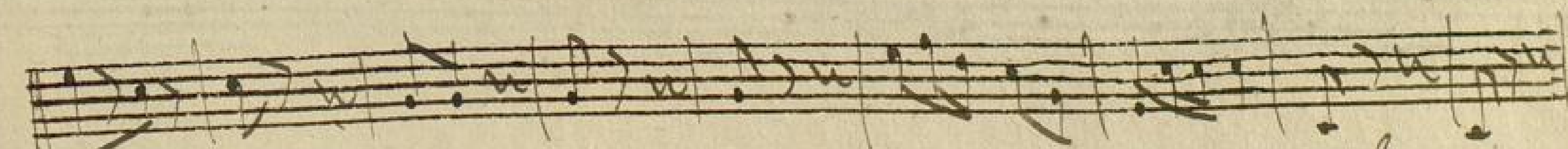
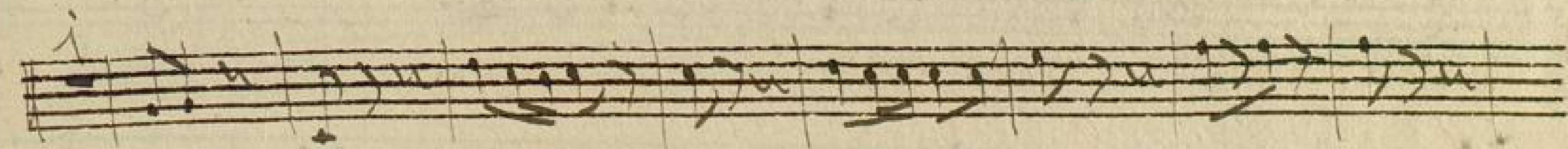
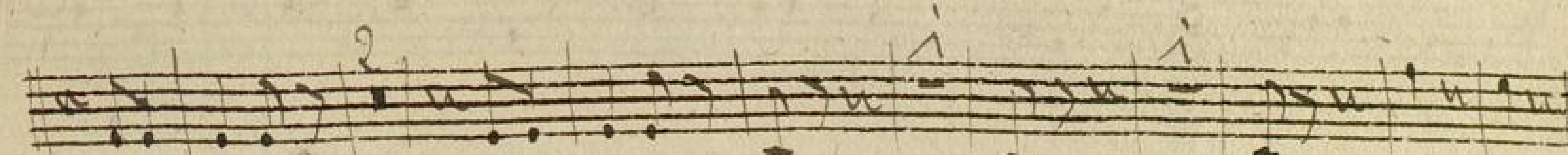
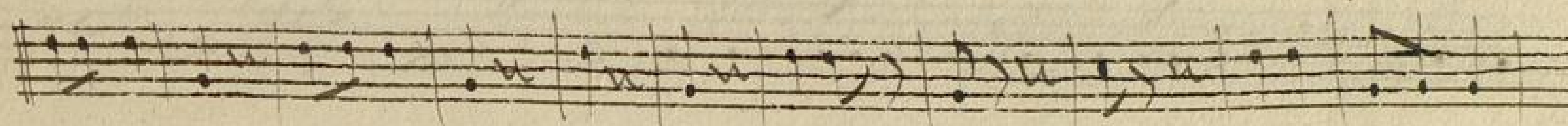
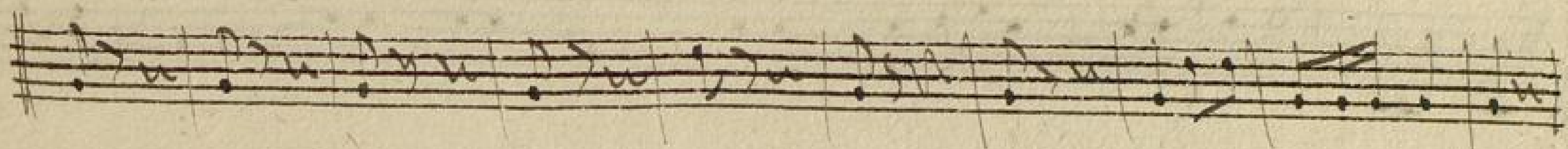
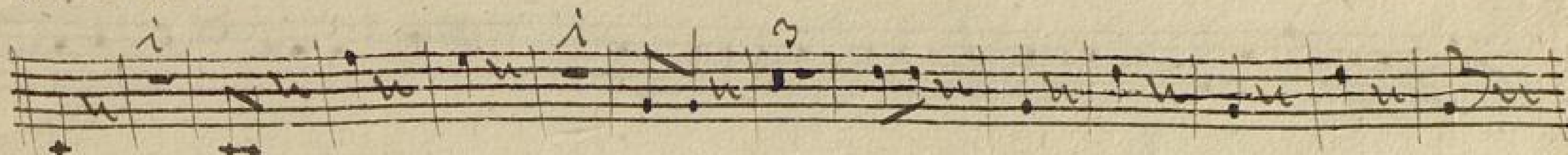
Offertorium I.

Corno Secondo. ex A. Mus. no 1453

Terzetto.



Andante.



Offertorium I.

Terzetto.

Basso, Organo. No. 1453

Andante.

This page contains a handwritten musical score for a piece titled "Offertorium I. Terzetto." for Bass and Organ, numbered "No. 1453". The tempo is marked "Andante." The score is written on ten staves. The first staff begins with a treble clef, a key signature of two sharps (F# and C#), and a 4/4 time signature. The notation includes various rhythmic values such as quarter, eighth, and sixteenth notes, as well as rests and accidentals. Fingerings are indicated by numbers 1-5 above or below notes. The manuscript shows signs of age, with some ink bleed-through and staining.

Offertorium

Offertorium I.

Terzetto.

~~Organo~~

Organo.

Basso.

Ann. No 1453

Andante.

The image shows a handwritten musical score on aged paper. At the top left, it is titled "Offertorium I." and "Terzetto." Below this, the instrument "Organo." is written, with a crossed-out "Organo" above it. To the right, "Basso." is written, with "Ann. No 1453" written below it. The tempo "Andante." is written at the beginning of the first staff. The music is written in G major (one sharp) and 3/4 time. It consists of 13 staves of music. The first staff begins with a treble clef and a key signature of one sharp. The notation includes various note values, rests, and dynamic markings such as "p" (piano). The paper shows signs of age, including some staining and a small tear at the bottom right corner.