

# **Badische Landesbibliothek Karlsruhe**

**Digitale Sammlung der Badischen Landesbibliothek Karlsruhe**

**Skizzen von 1944 - Signatur: K 3335 A II**

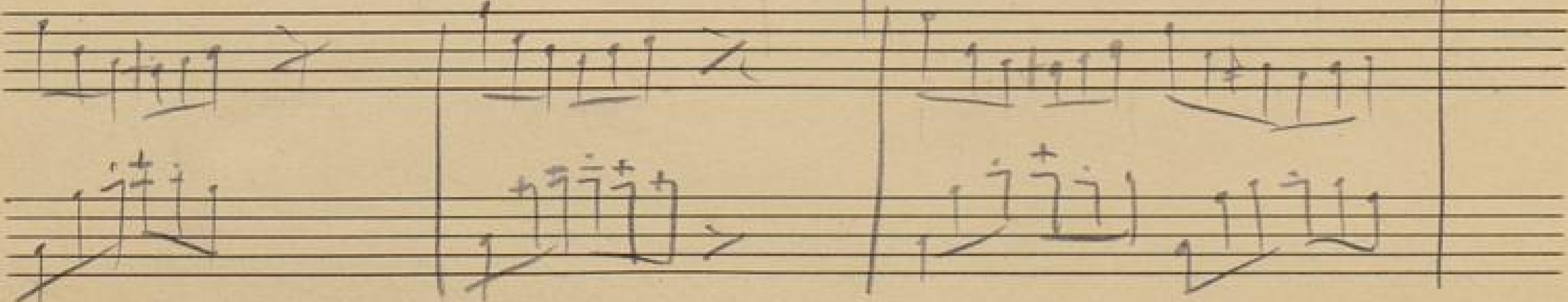
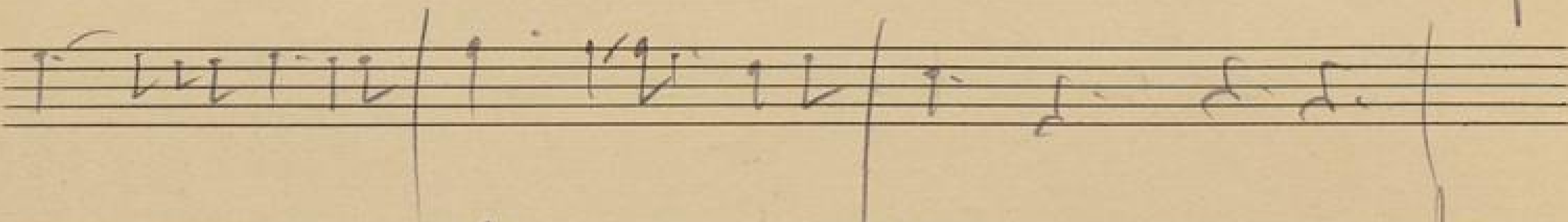
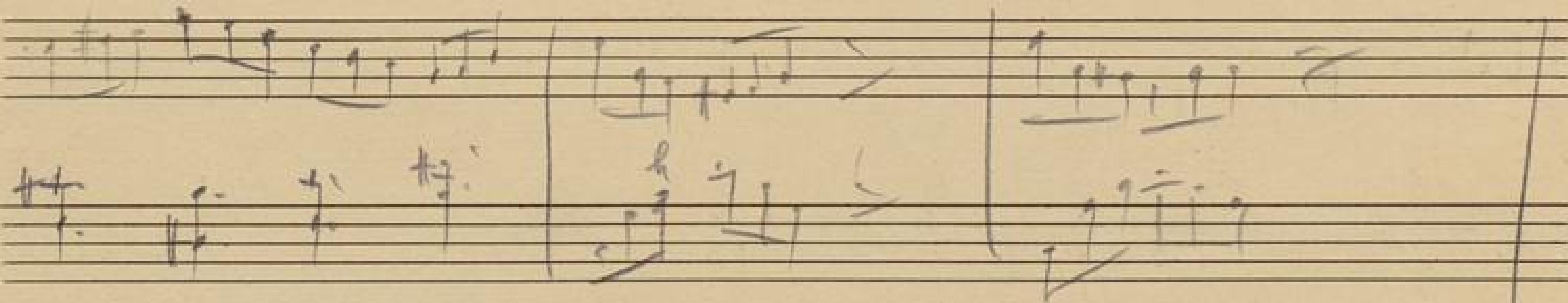
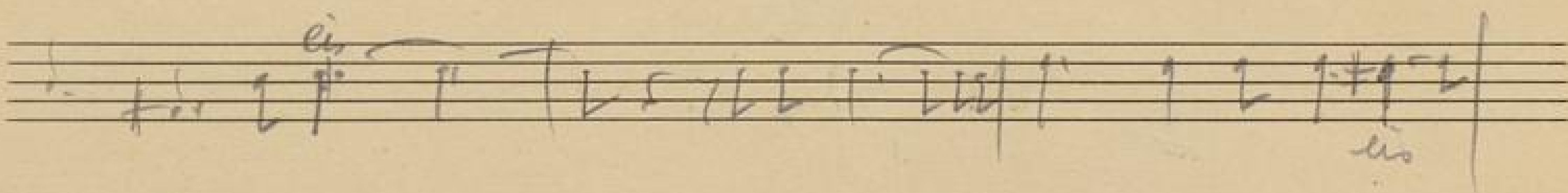
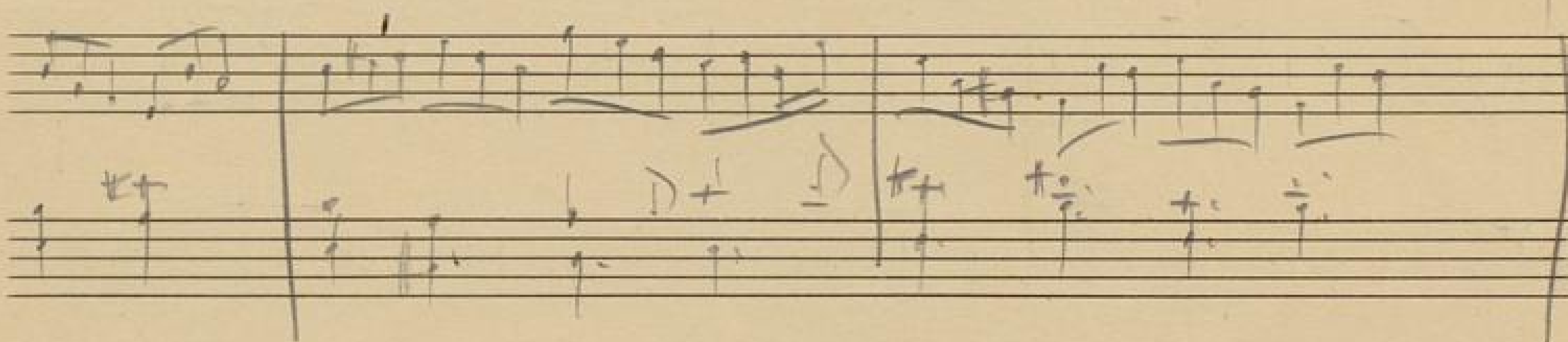
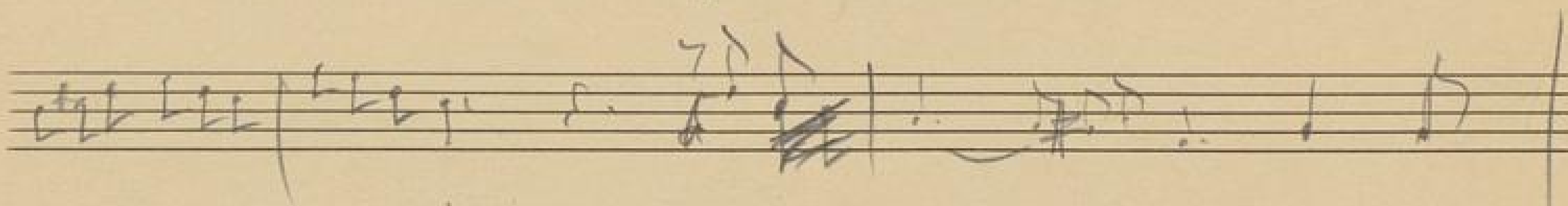
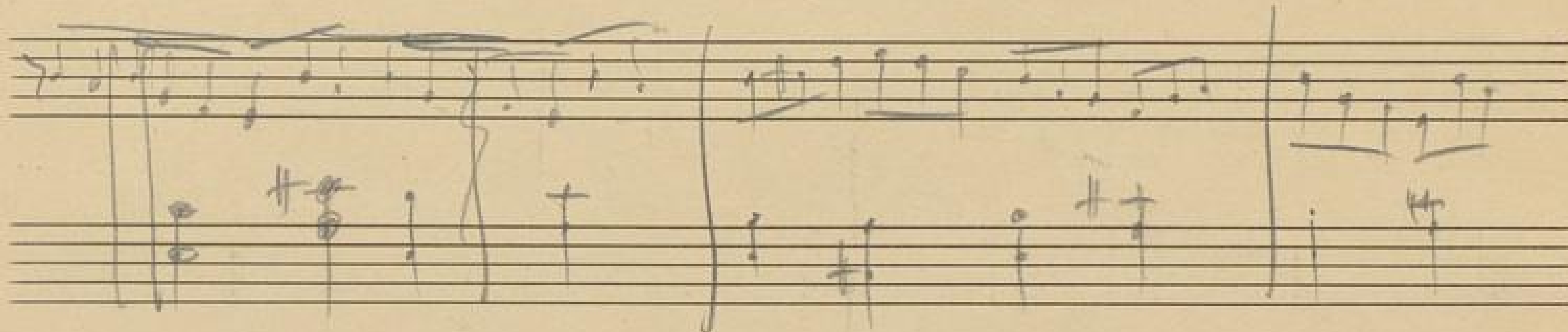
**Paër, Ferdinando**

**Detmold, 1944**

[7.] Tag Gesang St. George

[urn:nbn:de:bsz:31-105816](https://nbn-resolving.org/urn:nbn:de:bsz:31-105816)

Tag <sup>I</sup> <sub>II</sub> <sup>I</sup> George Lute H1



Handwritten musical notation on a five-line staff. The notation includes various notes, rests, and dynamic markings. A prominent marking "molto" is visible in the middle of the staff.

Handwritten musical notation on a five-line staff. The notation includes various notes, rests, and dynamic markings. A prominent marking "molto" is visible in the middle of the staff.

Handwritten musical notation on a five-line staff. The notation includes various notes, rests, and dynamic markings. A prominent marking "molto" is visible in the middle of the staff.

Handwritten musical notation on a five-line staff. The notation includes various notes, rests, and dynamic markings. A prominent marking "molto" is visible in the middle of the staff.

Handwritten musical notation on a five-line staff. The notation includes various notes, rests, and dynamic markings. A prominent marking "molto" is visible in the middle of the staff.

Handwritten musical notation on a five-line staff. The lyrics "Sie folgen der Feste (in der Höhe)" are written below the staff.

Handwritten musical notation on two staves, including a piano accompaniment with chords and a treble clef.

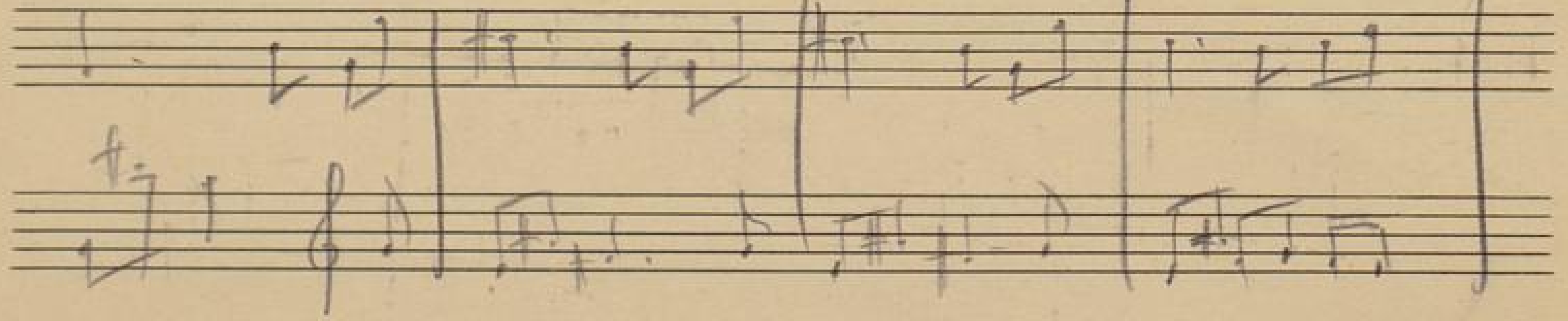
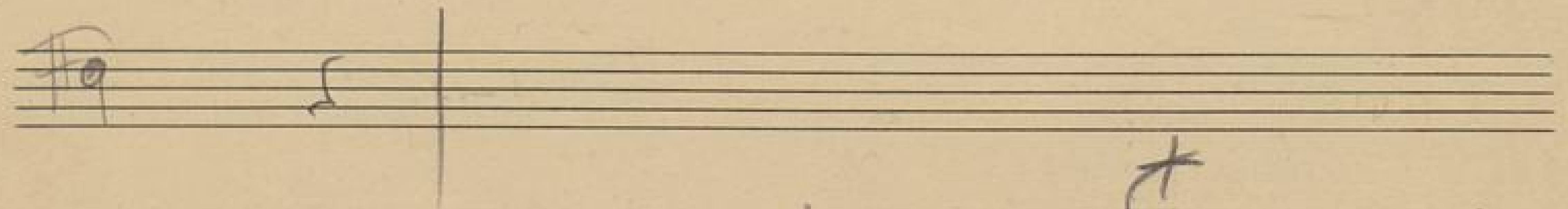
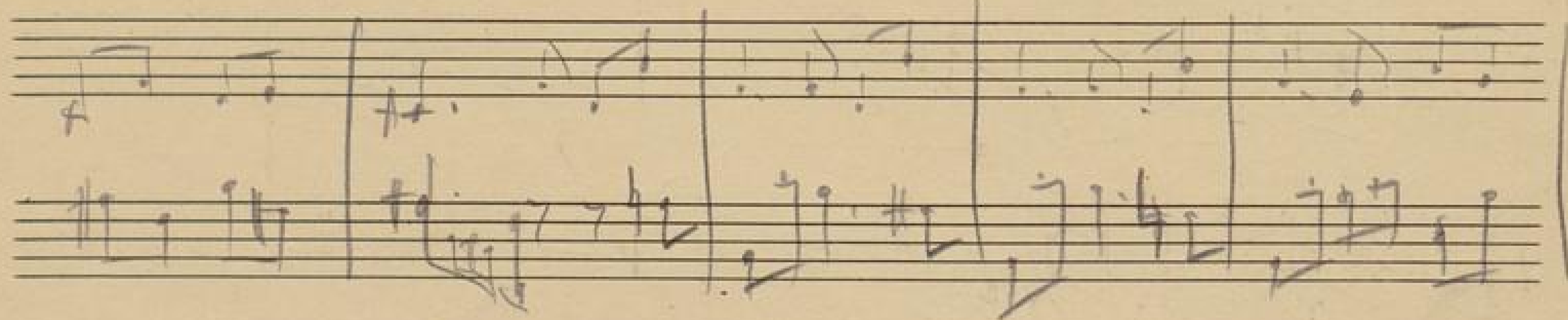
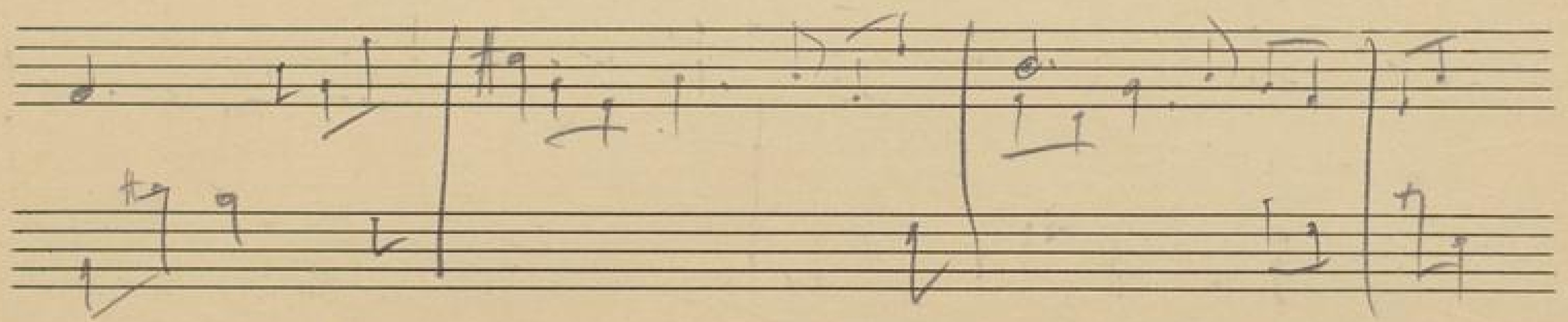
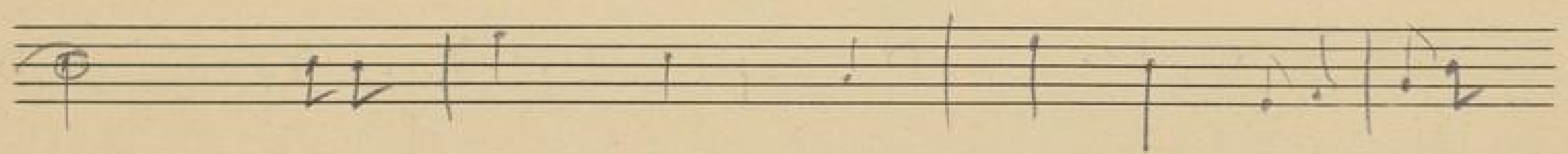
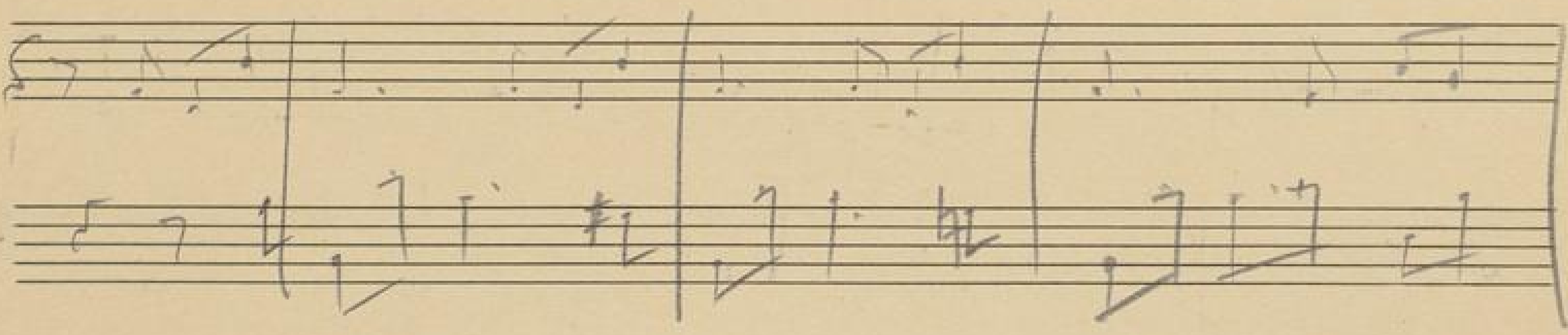
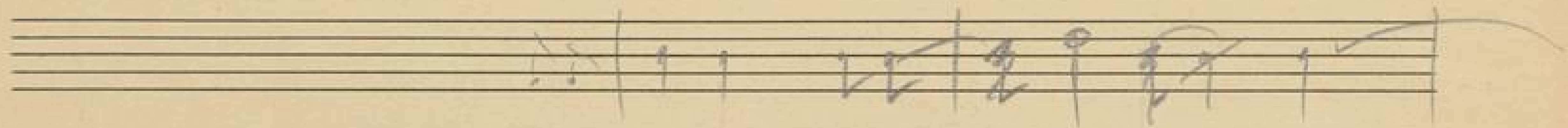
Handwritten musical notation on a five-line staff. The lyrics "O mein Tag" are written below the staff.

Handwritten musical notation on two staves, including a piano accompaniment with chords and a treble clef.

Handwritten musical notation on a five-line staff. The lyrics "Wieder schenke mir" are written below the staff.

Handwritten musical notation on two staves, including a piano accompaniment with chords and a treble clef.

Handwritten musical notation on two staves. The lyrics "2x schenke wieder 2x 5/4 2. Pae" are written above the staff. The notation includes a treble clef and various musical symbols.



Handwritten musical notation on a grand staff. The upper staff contains a complex melodic line with a slur and an 'a' marking above it. The lower staff contains a bass line with a few notes and rests.

Handwritten musical notation on a grand staff. The upper staff has a melodic line with a slur and a 'tr' marking above it. The lower staff has a bass line with notes and rests.

Handwritten musical notation on a grand staff. The upper staff has a melodic line with a slur and a 'tr' marking above it. The lower staff has a bass line with notes and rests.

Handwritten musical notation on a grand staff. The upper staff has a melodic line with a slur and an 'e' marking above it. The lower staff has a bass line with notes and rests.

Handwritten musical notation on a grand staff. The upper staff has a melodic line with a slur and a 'tr' marking above it. The lower staff has a bass line with notes and rests.

Handwritten musical notation on a grand staff. The upper staff has a melodic line with a slur and a 'tr' marking above it. The lower staff has a bass line with notes and rests.

Handwritten musical notation on a grand staff. The upper staff has a melodic line with a slur and a 'tr' marking above it. The lower staff has a bass line with notes and rests.

Handwritten musical score on aged paper, featuring multiple staves with notes, rests, and dynamic markings. The score includes:

- A treble clef staff at the top with a 3-measure triplet.
- A grand staff (treble and bass clefs) with a 3-measure triplet and dynamic markings *agfu* and *d*.
- A treble clef staff with a 3-measure triplet.
- A grand staff with a 3-measure triplet and dynamic markings *bo* and *to*.
- A treble clef staff with a 3-measure triplet.
- A grand staff with a 3-measure triplet and dynamic markings *bo* and *to*.
- A treble clef staff with a 3-measure triplet.
- A grand staff with a 3-measure triplet and dynamic markings *bo* and *to*.



Handwritten musical notation on a single staff, featuring a treble clef, a key signature of one sharp (F#), and a 7/8 time signature. The notation includes several notes with stems and beams, and a fermata over the final note.

Handwritten musical notation on two staves. The upper staff contains a treble clef, a key signature of one sharp, and a 7/8 time signature. The lower staff contains a bass clef and a key signature of one sharp. The notation includes a large slur spanning across both staves, and various notes and rests.

Handwritten musical notation on a single staff, featuring a treble clef, a key signature of one sharp, and a 7/8 time signature. The notation includes several notes with stems and beams, and a fermata over the final note.

Handwritten musical notation on two staves. The upper staff contains a treble clef, a key signature of one sharp, and a 7/8 time signature. The lower staff contains a bass clef and a key signature of one sharp. The notation includes a large slur spanning across both staves, and various notes and rests.

Handwritten musical notation on two staves. The upper staff contains a treble clef, a key signature of one sharp, and a 7/8 time signature. The lower staff contains a bass clef and a key signature of one sharp. The notation includes a large slur spanning across both staves, and various notes and rests.

Handwritten musical notation on a single staff, featuring a treble clef, a key signature of one sharp, and a 7/8 time signature. The notation includes several notes with stems and beams, and a fermata over the final note.

Handwritten musical notation on two staves. The upper staff contains a treble clef, a key signature of one sharp, and a 7/8 time signature. The lower staff contains a bass clef and a key signature of one sharp. The notation includes a large slur spanning across both staves, and various notes and rests.

Handwritten musical notation on a single staff, featuring a treble clef, a key signature of one sharp, and a 7/8 time signature. The notation includes several notes with stems and beams, and a fermata over the final note.

Handwritten musical notation on two staves. The upper staff contains a treble clef, a key signature of one sharp, and a 7/8 time signature. The lower staff contains a bass clef and a key signature of one sharp. The notation includes a large slur spanning across both staves, and various notes and rests.

Handwritten musical notation on a single staff, featuring a treble clef and a key signature of one sharp (F#). The notation includes eighth and sixteenth notes, rests, and a dynamic marking of *so* (piano).

Handwritten musical notation on two staves. The upper staff contains a treble clef and notes with a circled *o* marking. The lower staff contains a bass clef and notes with a circled *o* marking. There are various accidentals and dynamic markings throughout.

Handwritten musical notation on two staves, which has been crossed out with a large diagonal line. The notation includes a treble clef, a key signature of one sharp, and notes with accidentals. A dynamic marking of *f* is visible on the left side.

Handwritten musical notation on two staves. The upper staff features a treble clef and notes with a circled *o* marking. The lower staff features a bass clef and notes with a circled *o* marking. There are various accidentals and dynamic markings throughout.

Handwritten musical notation on two staves. The upper staff features a treble clef and notes with a circled *o* marking. The lower staff features a bass clef and notes with a circled *o* marking. There are various accidentals and dynamic markings throughout.

Handwritten musical notation on two staves. The top staff contains a melodic line with a measure containing a 5/4 time signature. The bottom staff contains a bass line with various notes and rests.

Handwritten musical notation on two staves. The top staff features a melodic line with a triplet of eighth notes. The bottom staff contains a bass line with a triplet of eighth notes and a measure with a 13-measure rest.

Handwritten musical notation on two staves. The top staff has a melodic line with several triplet markings. The bottom staff is a bass line with notes and rests. A large slur is present at the end of the top staff.

Handwritten musical notation on two staves. The top staff begins with a series of notes and rests, followed by a measure with a 'tch' marking. The bottom staff is mostly empty.