

# **Badische Landesbibliothek Karlsruhe**

**Digitale Sammlung der Badischen Landesbibliothek Karlsruhe**

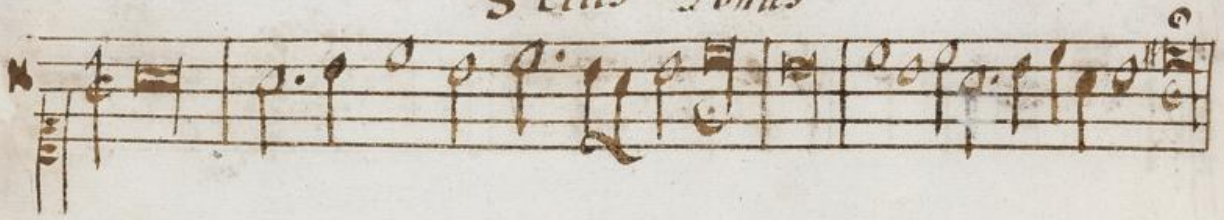
## **56 Sacred songs - Mus. Hs. 10**

**[S.l.], 1575**

Anonymus: Psalm (phrygisch)

**urn:nbn:de:bsz:31-18959**

3<sup>tius</sup> Tonus





3tus Tonus.

A musical staff with a treble clef and a common time signature. It contains a sequence of notes: a half note G4, a quarter note A4, a quarter note B4, a quarter note C5, a quarter note B4, a quarter note A4, a quarter note G4, a quarter note F4, a quarter note E4, a quarter note D4, and a half note C4. The staff ends with a double bar line and a repeat sign.

7mus Tonus

A musical staff with a treble clef and a common time signature. It contains a sequence of notes: a half note G4, a quarter note A4, a quarter note B4, a quarter note C5, a quarter note B4, a quarter note A4, a quarter note G4, a quarter note F4, a quarter note E4, a quarter note D4, and a half note C4. The staff ends with a double bar line and a repeat sign, followed by a large letter 'A'.

3tus Tonus

A musical staff with a treble clef and a common time signature. It contains a sequence of notes: a half note G4, a quarter note A4, a quarter note B4, a quarter note C5, a quarter note B4, a quarter note A4, a quarter note G4, a quarter note F4, a quarter note E4, a quarter note D4, and a half note C4. The staff ends with a double bar line and a repeat sign, followed by a large letter 'T'.

7mus Tonus

A musical staff with a treble clef and a common time signature. It contains a sequence of notes: a half note G4, a quarter note A4, a quarter note B4, a quarter note C5, a quarter note B4, a quarter note A4, a quarter note G4, a quarter note F4, a quarter note E4, a quarter note D4, and a half note C4. The staff ends with a double bar line and a repeat sign, followed by a large letter 'T'.