

Badische Landesbibliothek Karlsruhe

Digitale Sammlung der Badischen Landesbibliothek Karlsruhe

56 Sacred songs - Mus. Hs. 10

[S.l.], 1575

Anonymus: Vesper

urn:nbn:de:bsz:31-18959

Tonus Primus.

Dixit Sig. Ε νο να ο ε Ε νο να ο ε Ε νο να ο ε Ε νο να ο ε Ε νο να ο ε.

Cantus Primi Toni.

Tenor Primi Toni.

Cantus 2di Toni.

Tenor 2di Toni.

Cantus 3tij Toni.

Toni 3tij

Tenor.

Tonus 4tus.

Laudate pueri.

Toni 4ti

Cantus.

Toni 4ti

Tenor.

Altus Primi Toni.

Handwritten musical notation for the first staff, featuring a treble clef and a common time signature. The melody consists of a series of notes, including a prominent dotted half note, followed by a double bar line and a final cadence.

Bassus Primi Toni.

Handwritten musical notation for the second staff, featuring a bass clef and a common time signature. The melody follows a similar pattern to the first staff, with a dotted half note and a final cadence.

Tonus 2^{us}.

Handwritten musical notation for the third staff, featuring a treble clef and a common time signature. This staff contains a sequence of notes without stems, likely representing a scale or a specific tonal exercise.

Confitebor.

Altus 2^{di} Toni Eno na o e.

Handwritten musical notation for the fourth staff, featuring a treble clef and a common time signature. The melody is accompanied by the Latin text "Eno na o e" written below the notes.

Bassus 2^{di} Toni.

Handwritten musical notation for the fifth staff, featuring a bass clef and a common time signature. The melody is accompanied by the Latin text "Eno na o e" written below the notes.

Tonus 3^{ius}.

Handwritten musical notation for the sixth staff, featuring a treble clef and a common time signature. This staff contains a sequence of notes without stems, likely representing a scale or a specific tonal exercise.

Bonus vir.

Altus 3^{ty} Toni. Eno na o e Eno na o e Eno na o e e no na o e.

Handwritten musical notation for the seventh staff, featuring a treble clef and a common time signature. The melody is accompanied by the Latin text "Eno na o e Eno na o e Eno na o e e no na o e" written below the notes.

Bassus Toni 3^{ty}

Bassus.

Handwritten musical notation for the eighth staff, featuring a bass clef and a common time signature. The melody is accompanied by the Latin text "Eno na o e Eno na o e Eno na o e e no na o e" written below the notes.

Toni 4^{ti}

Altus.

Handwritten musical notation for the ninth staff, featuring a treble clef and a common time signature. The melody is accompanied by the Latin text "Eno na o e Eno na o e Eno na o e e no na o e" written below the notes.

Toni 4^{ti}

Bassus.

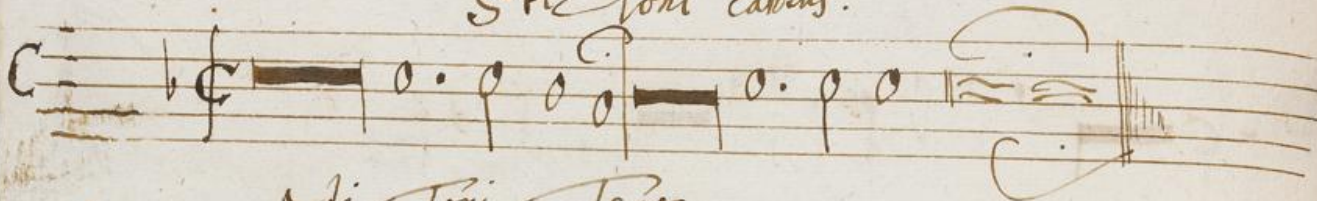
Handwritten musical notation for the tenth staff, featuring a bass clef and a common time signature. The melody is accompanied by the Latin text "Eno na o e Eno na o e Eno na o e e no na o e" written below the notes.

Quinti Toni

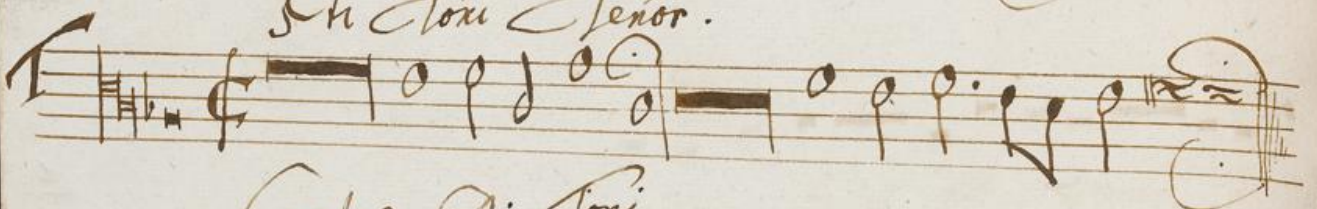


Letatus Sum.

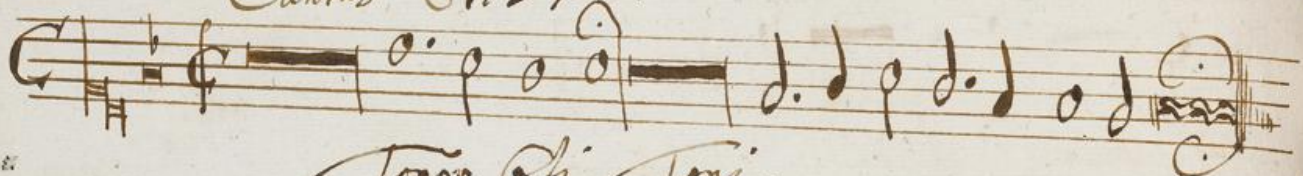
Sti Toni Cantus.



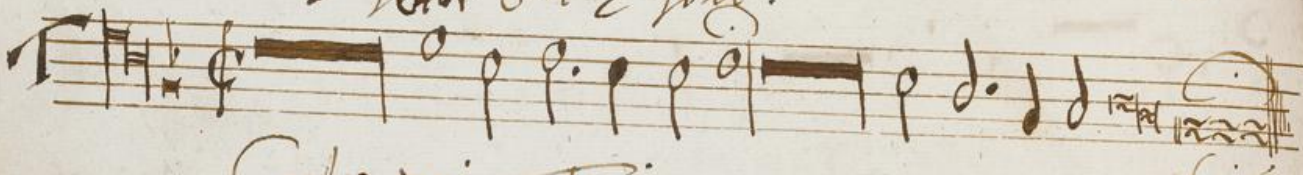
Sti Toni Tenor.



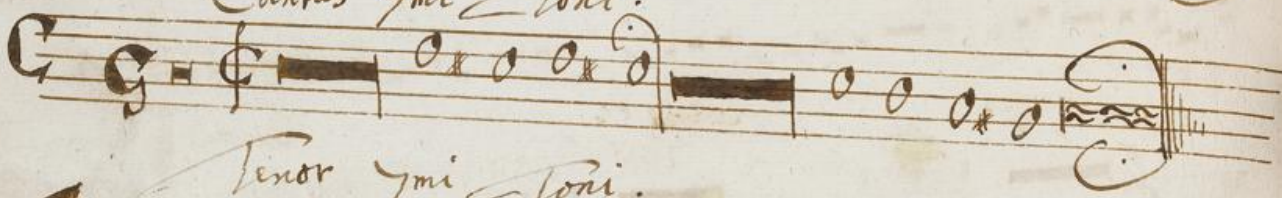
Cantus Sti Toni.



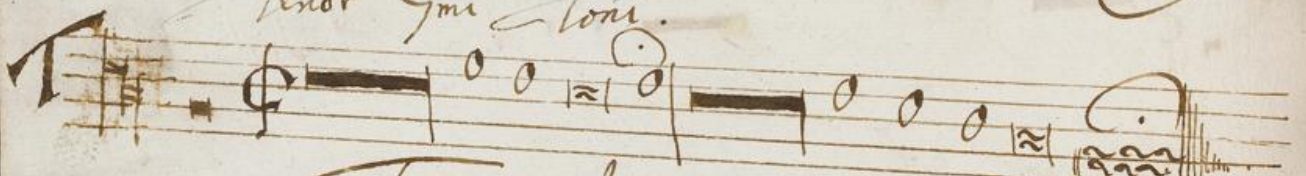
Tenor Sti Toni.



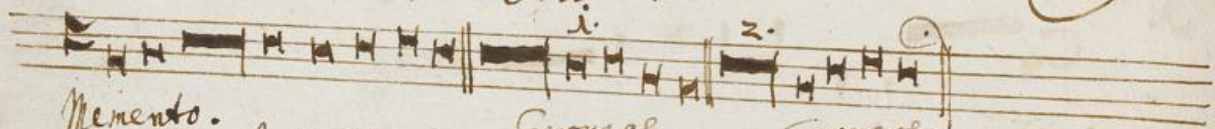
Cantus ymi Toni.



Tenor ymi Toni.



Tonus Octauus.

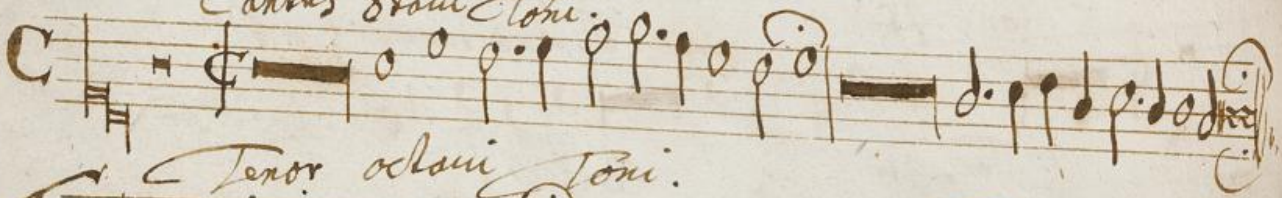


Memento.

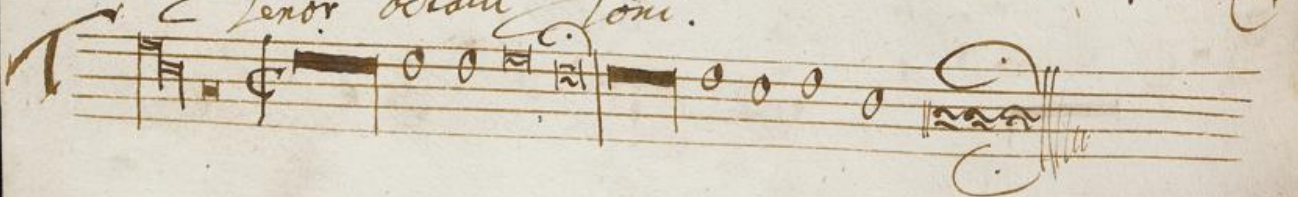
Cantus Octauus Toni.

Euonaol

Euonaol.



Tenor Octauus Toni.



altus sti toni.

Handwritten musical notation for the Altus sti toni part, featuring a treble clef and a series of notes on a five-line staff.

Bassus sti toni.

Handwritten musical notation for the Bassus sti toni part, featuring a bass clef and a series of notes on a five-line staff.

Tonus Sextus.

Handwritten musical notation for the Tonus Sextus part, consisting of a single staff with rhythmic markings.

Mi si Dnus.

Altus Tri toni.

Handwritten musical notation for the Altus Tri toni part, featuring a treble clef and a series of notes on a five-line staff.

Bassus Tri toni.

Handwritten musical notation for the Bassus Tri toni part, featuring a bass clef and a series of notes on a five-line staff.

Tonus Septimus.

Handwritten musical notation for the Tonus Septimus part, consisting of a single staff with rhythmic markings and some text below.

Credidi.

Euonae Euonae Euonae Euonae Euonae

Altus ymi toni.

Handwritten musical notation for the Altus ymi toni part, featuring a treble clef and a series of notes on a five-line staff.

Bassus ymi toni.

Handwritten musical notation for the Bassus ymi toni part, featuring a bass clef and a series of notes on a five-line staff.

Altus stavi toni.

Handwritten musical notation for the Altus stavi toni part, featuring a treble clef and a series of notes on a five-line staff.

Bassus octavi toni.

Handwritten musical notation for the Bassus octavi toni part, featuring a bass clef and a series of notes on a five-line staff.