

Badische Landesbibliothek Karlsruhe

Digitale Sammlung der Badischen Landesbibliothek Karlsruhe

Nonets - Don Mus.Ms. 1825

Späth, Andreas

[S.I.]

Oboe

urn:nbn:de:bsz:31-106642

No 1825
Oboe .

3

Nonetto.

Allegro con spirito

Oboe

Andri quartto

Handwritten musical score for Oboe, consisting of 14 staves of music. The score includes various dynamics (p, f, sf, ff, fp), articulation (accents, slurs), and performance instructions like "cresc", "dim", and "ritenuto". The piece concludes with a double bar line and a "ritenuto" marking.



2.

p

f

fp

fp

fp

fp

Solo

poco a poco cres.

Handwritten musical score for the first section, consisting of five staves. The key signature is two flats (B-flat and E-flat), and the time signature is 3/4. The notation includes various note values, rests, and dynamic markings such as *mf*, *f*, and *ff*. The word *Solo* is written above the first staff. Measure numbers 4, 5, and 6 are indicated. There are also some handwritten annotations like *2.* and *3.* near the staves.

Poco Adagio quasi Andante.

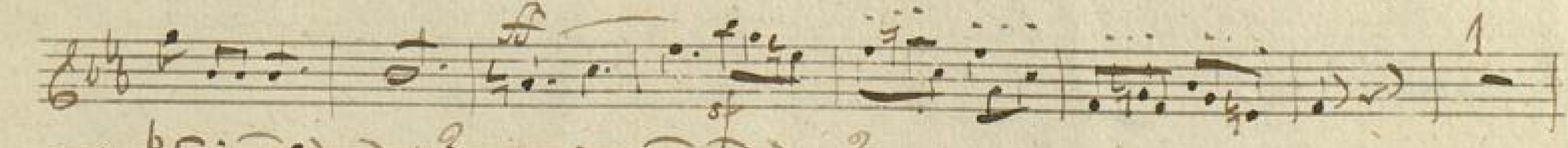
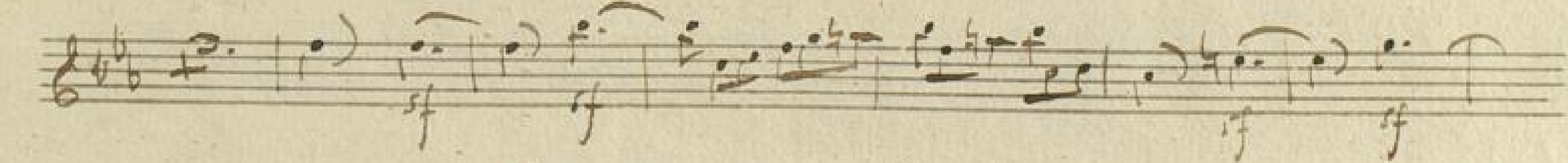
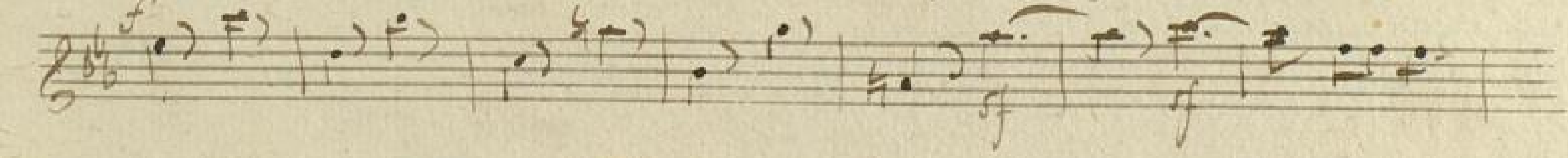
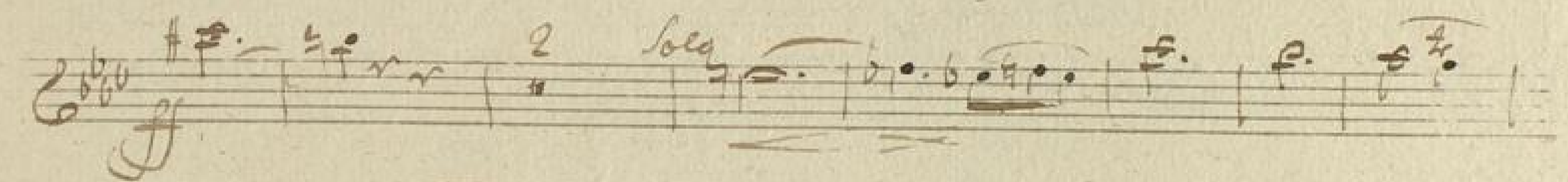
Handwritten musical score for the second section, consisting of eight staves. The key signature is two flats (B-flat and E-flat), and the time signature is 3/4. The notation includes various note values, rests, and dynamic markings such as *f*, *ff*, *crus.*, *sp*, and *p*. The word *Solo* is written above the first staff. Measure numbers 4, 5, 6, and 7 are indicated. There are also some handwritten annotations like *1.*, *2.*, and *3.* near the staves.

4.

Handwritten musical score for a Minuetto. The score consists of 16 measures across 12 staves. It features various musical notations including treble and bass clefs, key signatures of one flat, and dynamic markings such as *p*, *mf*, *f*, and *cresc.* There are also performance instructions like *dimin.* and *ppp*.

Minuetto
Molto Allegro

16
4.



un poco più lento.

6. *14*
Musical staff with treble clef, key signature of two flats, and a 3/4 time signature. The staff contains a melodic line with various note values and rests.

Musical staff with treble clef, key signature of two flats, and a 3/4 time signature. It features a melodic line with a triplet of eighth notes and a dynamic marking of *fr.* (forzando).

Musical staff with treble clef, key signature of two flats, and a 3/4 time signature. It contains a complex rhythmic pattern with many sixteenth and thirty-second notes.

Musical staff with treble clef, key signature of two flats, and a 3/4 time signature. It features a melodic line with a dynamic marking of *pp.* (pianissimo) and a tempo marking of *ritardando tempo*.

Musical staff with treble clef, key signature of two flats, and a 3/4 time signature. It contains a melodic line with various note values and rests.

Musical staff with treble clef, key signature of two flats, and a 3/4 time signature. It features a melodic line with various note values and rests.

Musical staff with treble clef, key signature of two flats, and a 3/4 time signature. It contains a melodic line with a triplet of eighth notes and a dynamic marking of *p* (piano).

Musical staff with treble clef, key signature of two flats, and a 3/4 time signature. It features a melodic line with various note values and rests.

Musical staff with treble clef, key signature of two flats, and a 3/4 time signature. It contains a melodic line with various note values and rests.

Musical staff with treble clef, key signature of two flats, and a 3/4 time signature. It features a melodic line with various note values and rests.

Musical staff with treble clef, key signature of two flats, and a 3/4 time signature. It contains a melodic line with various note values and rests.

Musical staff with treble clef, key signature of two flats, and a 3/4 time signature. It features a melodic line with various note values and rests. Includes dynamic markings of *dim.* (diminuendo) and *pp.* (pianissimo).

Musical staff with treble clef, key signature of two flats, and a 3/4 time signature. It contains a melodic line with various note values and rests. Includes a dynamic marking of *f* (forte).

Musical staff with treble clef, key signature of two flats, and a 3/4 time signature. It contains a melodic line with various note values and rests. Includes a dynamic marking of *15* and a tempo marking of *più lento*.

Andante

Andante

p

mf

f

sf

sfz

f

sfz

f

sfz

Solo

un poco più forte

f

f

8.

Handwritten musical score on ten staves. The first two staves contain the main melody with dynamic markings like "f" and "piu mosso". The third staff is a bass line. The fourth staff has a key signature change to B-flat major and a time signature change to 4/4. The fifth staff continues the bass line. The sixth staff is a rhythmic accompaniment with accents. The seventh and eighth staves are rhythmic accompaniment with slurs. The ninth staff is a melodic line with slurs. The tenth staff is empty.

4

