

Badische Landesbibliothek Karlsruhe

Digitale Sammlung der Badischen Landesbibliothek Karlsruhe

Arias - Don Mus.Ms. 1510g

Kalivoda, Jan Křtitel Václav

[S.I.]

Horn I

[urn:nbn:de:bsz:31-107907](https://nbn-resolving.org/urn:nbn:de:bsz:31-107907)

Sarejino Corno 1^{mo}

Mus. Nr. 15704

Overture Largo in D^u
For:

Allo n. troppo.
For:

V. Sub.

Handwritten musical notation on a single staff, featuring a treble clef and a key signature of one sharp (F#). The notation includes a first ending bracket labeled "1." and dynamic markings "for." and "for." below the staff.

Handwritten musical notation on a single staff, featuring a treble clef and a key signature of one sharp. It includes a first ending bracket labeled "1." and a dynamic marking "for:" below the staff.

Handwritten musical notation on a single staff, featuring a treble clef and a key signature of one sharp. It includes a first ending bracket labeled "1." and a dynamic marking "p6:" below the staff.

Handwritten musical notation on a single staff, featuring a treble clef and a key signature of one sharp. It includes a first ending bracket labeled "1." and dynamic markings "p6:" and "p6:" below the staff.

Handwritten musical notation on a single staff, featuring a treble clef and a key signature of one sharp. It includes a first ending bracket labeled "1." and dynamic markings "p6:" and "p6:" below the staff. A handwritten note "cres = con = " is written to the right of the staff.

Handwritten musical notation on a single staff, featuring a treble clef and a key signature of one sharp. It includes a first ending bracket labeled "1." and a dynamic marking "for:" below the staff.

Handwritten musical notation on a single staff, featuring a treble clef and a key signature of one sharp. It includes a first ending bracket labeled "1." and a dynamic marking "for:" below the staff.

Handwritten musical notation on a single staff, featuring a treble clef and a key signature of one sharp. It includes a first ending bracket labeled "1." and a dynamic marking "for:" below the staff.

Handwritten musical notation on a single staff, featuring a treble clef and a key signature of one sharp. It includes a first ending bracket labeled "1." and dynamic markings "Alto mod:" and "Fin." below the staff.

Handwritten musical notation on a single staff, featuring a treble clef and a key signature of one sharp. It includes a first ending bracket labeled "1." and a dynamic marking "Alto mod:" below the staff.

Musical staff with treble clef, containing a melodic line with a triplet of eighth notes and first endings.

Musical staff with treble clef, containing a melodic line with a *pp* dynamic marking.

Musical staff with treble clef, containing a melodic line with first and second endings.

Musical staff with treble clef, containing a melodic line with *fp* dynamic markings.

Musical staff with treble clef, containing a melodic line with a triplet and *for.* marking.

Musical staff with treble clef, containing a melodic line with first and second endings.

Musical staff with treble clef, containing a melodic line with a triplet and the tempo marking *Adagio maestoso. P.*

Musical staff with treble clef, containing a melodic line with tempo markings *Allo mod^{to} colla parte.* and *piu tosto allarg. in tempo.*

Musical staff with treble clef, containing a melodic line with the tempo marking *Un poco piu mosso.* and *mf.* dynamic marking.

Musical staff with treble clef, containing a melodic line.

Handwritten musical score for the first section, consisting of seven staves of music. The notation includes various rhythmic values, accidentals, and dynamic markings such as "for." and "pp.". The piece concludes with a double bar line and the instruction "Noel. in G."

Andante
poco sostenuto.

Handwritten musical score for the second section, consisting of three staves of music. The notation includes dynamic markings like "ppoo:", "for.", and "poco". It features a tempo change to "colla voce. in Tempo." and ends with a double bar line.

Handwritten musical notation on a single staff, featuring rhythmic patterns and dynamic markings such as *mf* and *f*.

Allo risoluto.

for. *p*

for. *colla parte*

in Tempo.

for.

for. *fp.* *for. afor.*

in C.

Allo

Maestoso

p *p*

p *f*

p *p*

Handwritten musical notation on a single staff, featuring a treble clef and a key signature of one sharp (F#). The notation includes a series of eighth notes followed by a first ending bracket. Dynamic markings include 'f' and 'ff'.

Handwritten musical notation on a single staff, featuring a treble clef and a key signature of one sharp (F#). The notation includes a series of eighth notes followed by a first ending bracket. Dynamic markings include 'f' and 'ff'.

Handwritten musical notation on a single staff, featuring a treble clef and a key signature of one sharp (F#). The notation includes a series of eighth notes followed by a first ending bracket. Dynamic markings include 'f' and 'ff'.

Handwritten musical notation on a single staff, featuring a treble clef and a key signature of one sharp (F#). The notation includes a series of eighth notes followed by a first ending bracket. Dynamic markings include 'f' and 'ff'.

Handwritten musical notation on a single staff, featuring a treble clef and a key signature of one sharp (F#). The notation includes a series of eighth notes followed by a first ending bracket. Dynamic markings include 'f' and 'ff'.

Handwritten musical notation on a single staff, featuring a treble clef and a key signature of one sharp (F#). The notation includes a series of eighth notes followed by a first ending bracket. Dynamic markings include 'f' and 'ff'.

Handwritten musical notation on a single staff, featuring a treble clef and a key signature of one sharp (F#). The notation includes a series of eighth notes followed by a first ending bracket. Dynamic markings include 'f' and 'ff'.

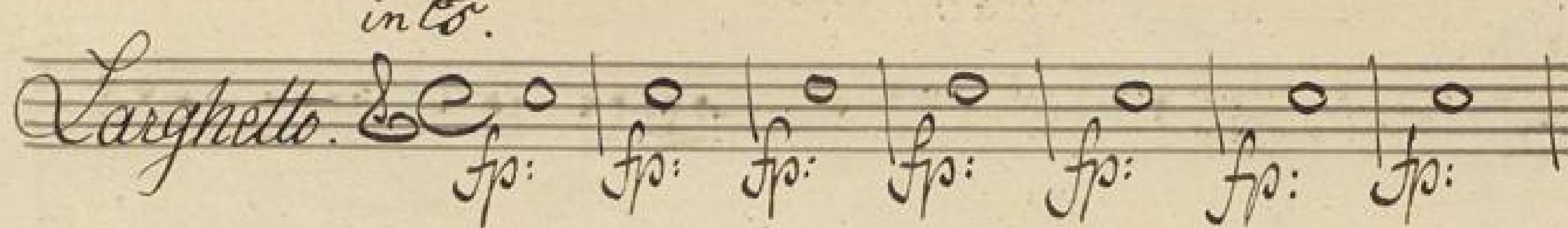
Handwritten musical notation on a single staff, featuring a treble clef and a key signature of one sharp (F#). The notation includes a series of eighth notes followed by a first ending bracket. Dynamic markings include 'f' and 'ff'.

ff. in F. Allò con Spirito.

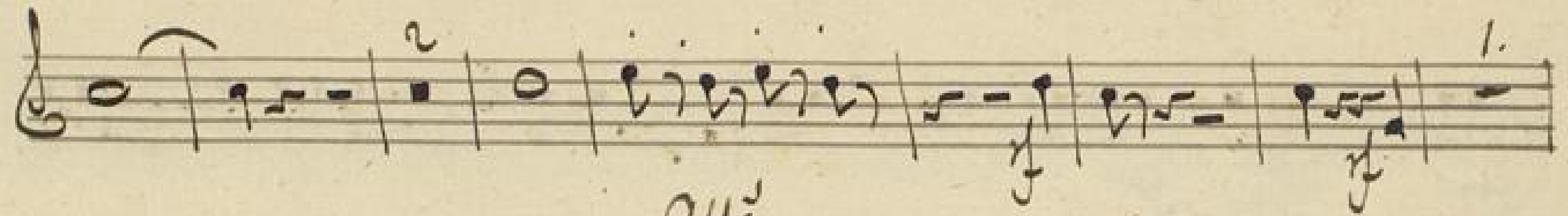
Handwritten musical notation on a single staff, featuring a treble clef and a key signature of one sharp (F#). The notation includes a series of eighth notes followed by a first ending bracket. Dynamic markings include 'f' and 'ff'.

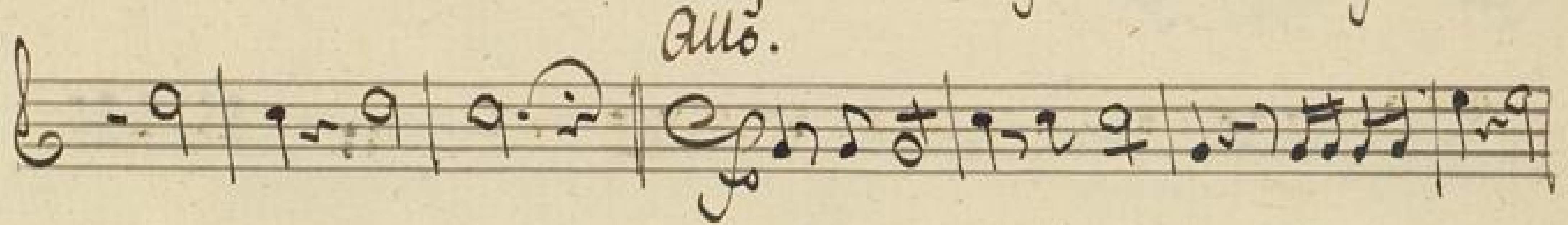
Handwritten musical score on ten staves. The notation includes treble clefs, a key signature of one sharp (F#), and various rhythmic values such as eighth, sixteenth, and thirty-second notes. Dynamic markings like 'f' and 'p' are present. The music features complex rhythmic patterns and some accidentals.

Recit: *tacet* *f* Durch Herrn Philips
 fällt *seyn* die Quartett in:
in d

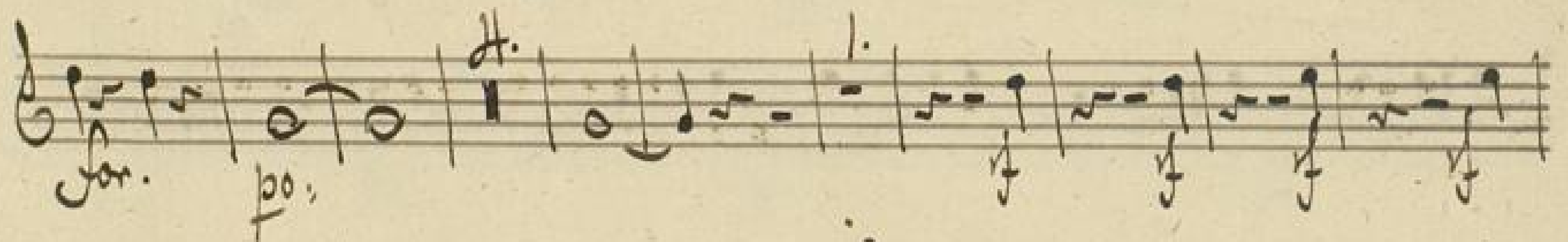
in C.
Larghetto.  *fp: fp: fp: fp: fp: fp: fp:*

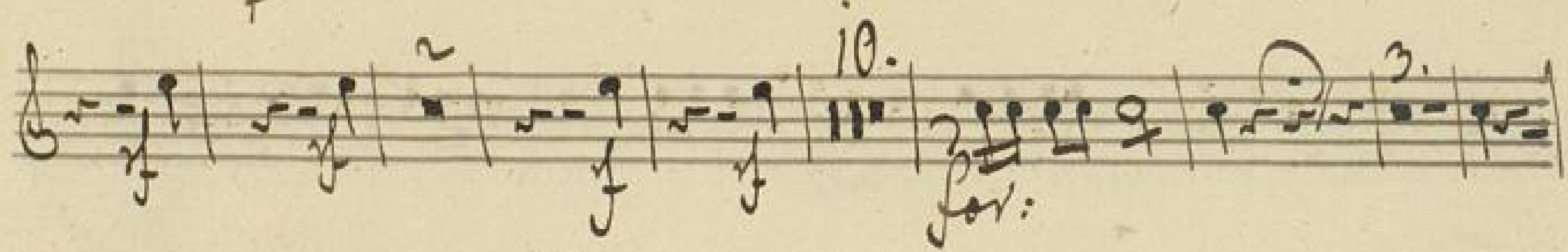
 *pp*

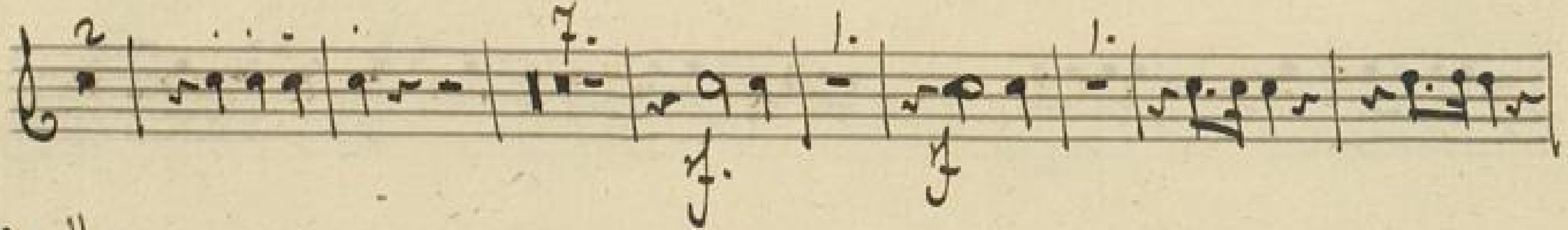


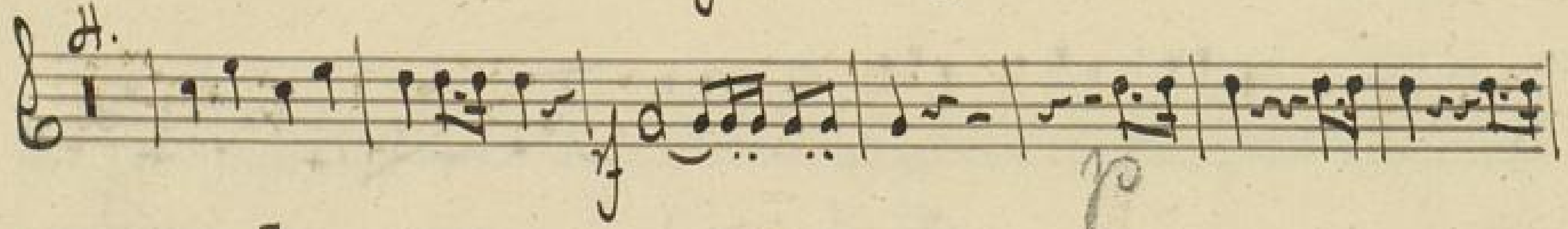
Allo.


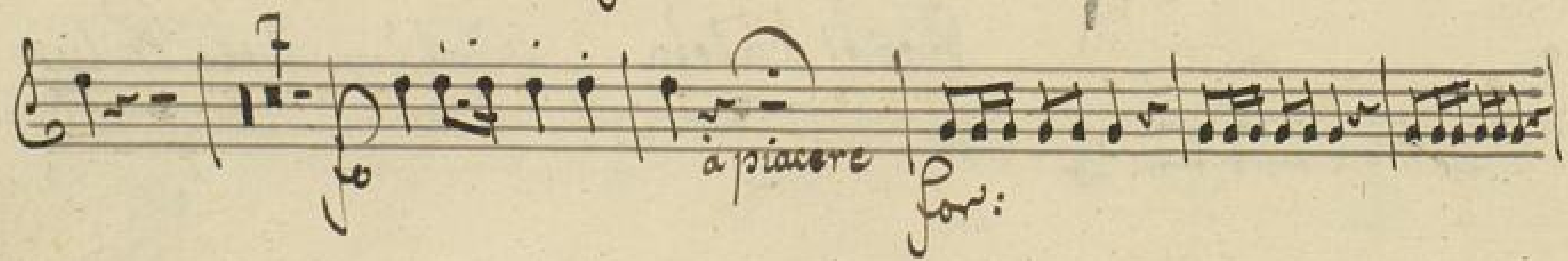


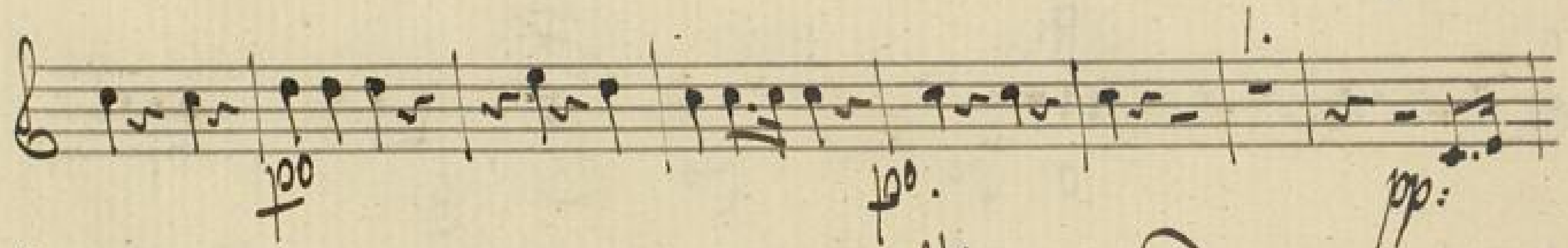
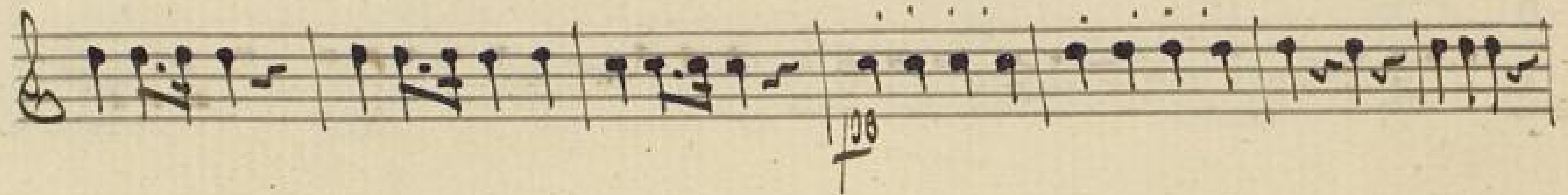
For. *pp*


 *For.*



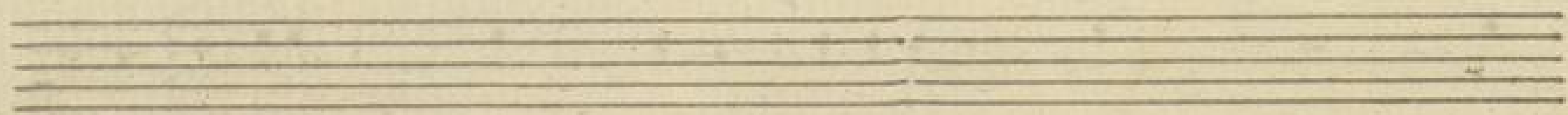


 *à piacere* *For.*



And *Adagio* *in C.*

D! Gott sein sein sein will sich erheben.



man zu dir ich noch nicht kann wissen Ich will und in

Lüster schließt die Augen mit Gewalt. In der Hoffen wir die beylächer Moni =

Adagio.

For:

= gnuß das wills der Feind uns begreifen soll und nicht sein.

Allegretto.

Und anhandt sie sind an nicht dem Leub Und ich

à tempo.

For.

Alain Alain Largo = no und ba =

tacet.

signallich von der Feind.

à tempo For: tacet attacca.

in Barre

And^{te} in B. alto.

Sostenuto. *pp*

pp

non

20.

for. p0 for. 3.

de

p0: for:

2.

for: p0.

1. for:

crecen

p0 p0:

fp. fp. fp. fp. for.

in D^o *Finale*

8. *Allo mod.* *for.* *1.*

pp *for.* *3.*

pp *for.* *3.*

pp *for.* *1.*

for. *1.*

3. *3.*

for. *1.*

for. *3.* *pp*

in E^o

Handwritten musical score on ten staves. The notation includes treble clefs, various note values, rests, and dynamic markings. The score begins with a treble clef and a key signature of one flat (B-flat). The tempo is marked "Allegro n. troppo" and the time signature is 4/4. The piece is in G major, indicated by the "in G" marking and the key signature. The score contains several measures with first and second endings, marked with "1." and "2.". Dynamic markings include "cresc.", "f.", "p", "Piu allo.", "3.", "sp.", and "for.". The page number "17" is written in the top right corner.

fz.
Musical staff with notes and rests.

fz.
Musical staff with notes and rests.

3.
Musical staff with notes and rests.

Musical staff with notes and rests.

Musical staff with notes and rests.

e.
Musical staff with notes and rests.

Musical staff with notes and rests.

2. Flugel

in F. 1/2
q. Allo vivace.
fz.
Musical staff with notes and rests.

Fine dell'atto.

3.
Musical staff with notes and rests.

fp.
Musical staff with notes and rests.
fz.

Handwritten musical score on ten staves. The notation includes various notes, rests, and dynamic markings such as *f*, *ff*, *p*, *pp*, *rit.*, and *in Tempo.* The score concludes with a double bar line and a large flourish. Below the final staff, the time signature $9/8$ is written.

in A. *Duetto*

Recit:
 in A. *Allegro:*
 in A. *Recit:*
 in A. *Allegro:*

*Das ist der Galgen in dem du
 sein wirst*

*Wird er mit einem
 Schwert die Hals*

Allo.
For: Solo
For:

*Wunderbar sein nicht:
 Ich laß mich hantieren:*

attaca:
In dem mit dem

Larghetto.

7. 15. *pp.*

3. *For.*

pp.

Handwritten musical score for a piece, consisting of seven staves. The notation includes various note values, rests, and dynamic markings such as "for." and "fp.". There are also some numerical markings like "2" and "3." above notes.

Vi. = De Nro 12

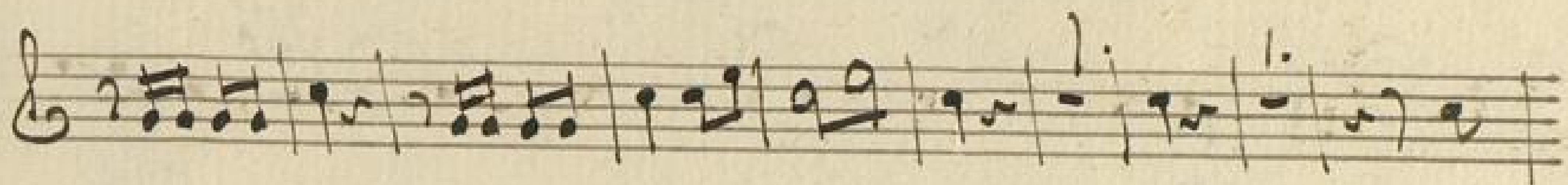
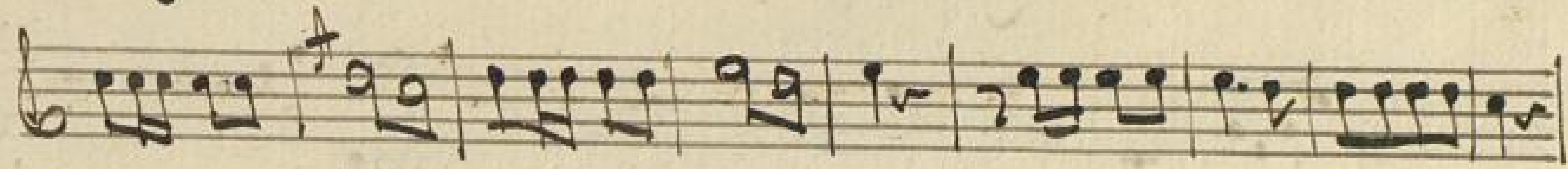
A single staff of handwritten musical notation, possibly a title or a specific instruction, with a large decorative flourish.

Coro *Nro 14 in E.*
Recit. attacca. Allegretto.

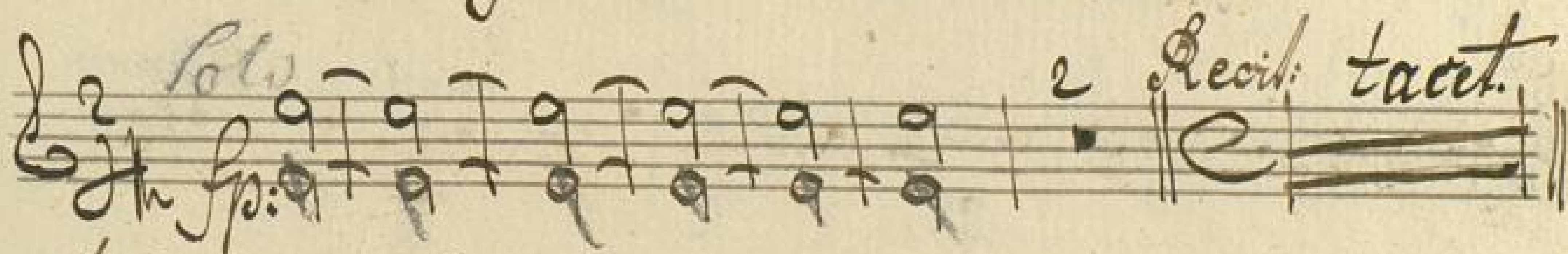
Handwritten musical notation for a section titled "Coro Nro 14 in E. Recit. attacca. Allegretto." The notation is in treble clef with a common time signature.

Handwritten musical notation for a section, starting with a dynamic marking "for.".

Handwritten musical notation for a section, ending with a dynamic marking "pff".



And. Adagio. in D. Aria



Allegretto: Und sprach zu dem Heiligen Geist, will ich best werden: attacca. in Es

Julius Stiller

Largo *in Es.*

ma non troppo

for: *rit:* *for:*

Solo

for. *for:* *fpo:*

Allo.

for. *2^{do}*

for. *for:* *for.*

for.

for.

for.

10. *for:*

Maestoso: *1.* *in tempo*

for. *colla voce.*

1. *1.* *3.* *ralent:* *in tempo*

rit:

Handwritten musical notation on a single staff, starting with a treble clef and a key signature of one sharp (F#). The music includes dynamic markings such as *ff*, *f*, and *for.*

Handwritten musical notation on a single staff, continuing the piece with various note values and rests.

Handwritten musical notation on a single staff, featuring a series of rhythmic patterns and note groupings.

Handwritten musical notation on a single staff, showing a sequence of notes and rests.

Handwritten musical notation on a single staff, including a large, decorative flourish or ornament. Above the staff, the text "Zusatz No 14" is written in cursive.

Handwritten musical notation on a single staff, starting with the tempo marking "Allo^o in D. agitato." and a dynamic marking of *ff*. The notation includes various rhythmic figures.

Chor Zungen

Handwritten musical notation on a single staff, continuing the musical piece.

Handwritten musical notation on a single staff, featuring a series of notes and rests.

Handwritten musical notation on a single staff, showing a sequence of notes and rests.

Handwritten musical notation on a single staff, starting with the tempo marking "colla parte in Tempo" and a dynamic marking of *ff*.

And^{te} Post.

Handwritten musical notation on a single staff, starting with a treble clef and a common time signature. It features a series of notes, including a half note, a quarter note, and a dotted quarter note, followed by a double bar line and a fermata. A dynamic marking *pp* is present below the first few notes.

Handwritten musical notation on a single staff, starting with a treble clef and a common time signature. It features a series of notes, including a half note, a quarter note, and a dotted quarter note, followed by a double bar line and a fermata. A dynamic marking *pp* is present below the first few notes. The tempo marking *Risoluto.* is written above the staff, and *for.* and *come Rcolletivo* are written below.

Handwritten musical notation on a single staff, starting with a treble clef and a common time signature. It features a series of notes, including a half note, a quarter note, and a dotted quarter note, followed by a double bar line and a fermata. A dynamic marking *pp* is present below the first few notes. The tempo marking *a Tempo.* is written above the staff, and *H* is written below.

Handwritten musical notation on a single staff, starting with a treble clef and a common time signature. It features a series of notes, including a half note, a quarter note, and a dotted quarter note, followed by a double bar line and a fermata. A dynamic marking *pp* is present below the first few notes. The tempo marking *for.* is written below the staff.

Handwritten musical notation on a single staff, starting with a treble clef and a common time signature. It features a series of notes, including a half note, a quarter note, and a dotted quarter note, followed by a double bar line and a fermata. A dynamic marking *pp* is present below the first few notes. The tempo marking *for.* is written below the staff.

Handwritten musical notation on a single staff, starting with a treble clef and a common time signature. It features a series of notes, including a half note, a quarter note, and a dotted quarter note, followed by a double bar line and a fermata. A dynamic marking *pp* is present below the first few notes. The tempo marking *Meno allō.* is written above the staff, and *H.* and *Un po' più mosso.* are written below.

Handwritten musical notation on a single staff, starting with a treble clef and a common time signature. It features a series of notes, including a half note, a quarter note, and a dotted quarter note, followed by a double bar line and a fermata. A dynamic marking *pp* is present below the first few notes. The tempo marking *colla parte* is written below the staff.

Handwritten musical notation on a single staff, starting with a treble clef and a common time signature. It features a series of notes, including a half note, a quarter note, and a dotted quarter note, followed by a double bar line and a fermata. A dynamic marking *pp* is present below the first few notes. The tempo marking *in Tempo.* is written above the staff, and *for.* and *pp* are written below.

Handwritten musical notation on a single staff, starting with a treble clef and a common time signature. It features a series of notes, including a half note, a quarter note, and a dotted quarter note, followed by a double bar line and a fermata. A dynamic marking *pp* is present below the first few notes. The tempo marking *for.* is written below the staff.

Handwritten musical notation on a single staff, starting with a treble clef and a common time signature. It features a series of notes, including a half note, a quarter note, and a dotted quarter note, followed by a double bar line and a fermata. A dynamic marking *pp* is present below the first few notes. The tempo marking *for.* is written below the staff.

in Es.

241 Finale

No 16 *Allo con Spirito* *pp*

Recit: *Andate ad unum suum misericorditer meo dicit*

Recit: tacet.

in tempo. *Caro* Recit: *in mich fort mich den aufstehn!* attacca. in C

in C. Allonantanto *for.* *pp*

Recit: *a Tempo.* *io.*

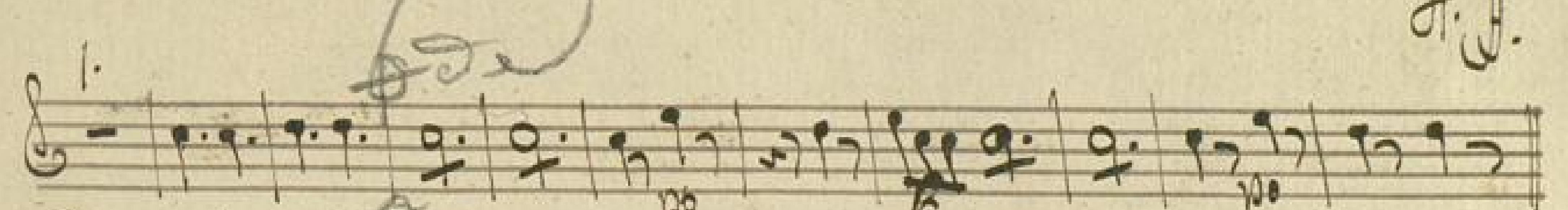
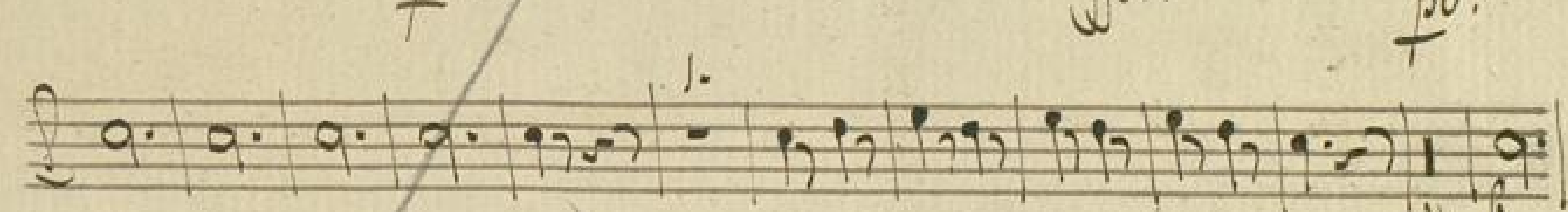
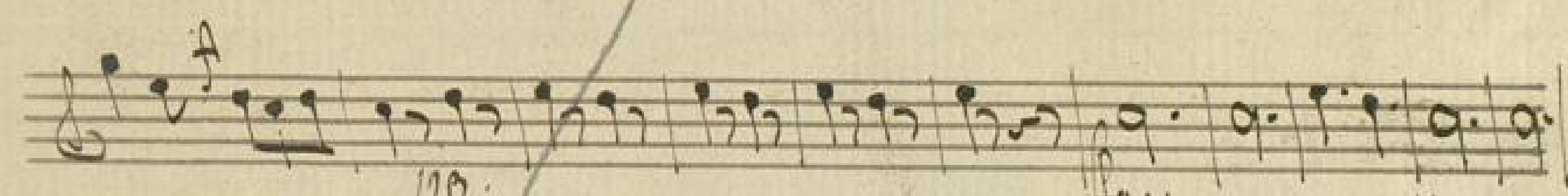
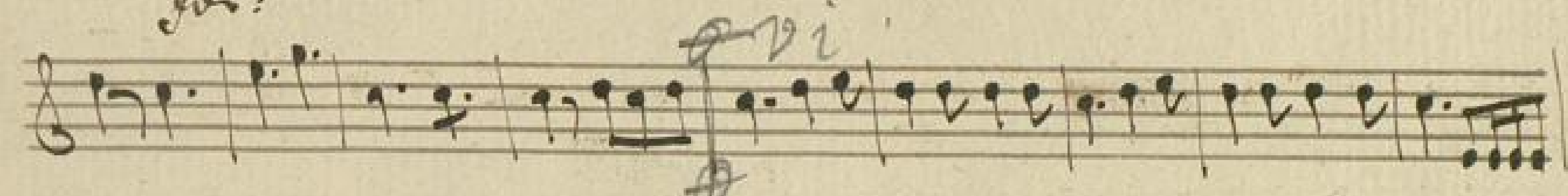
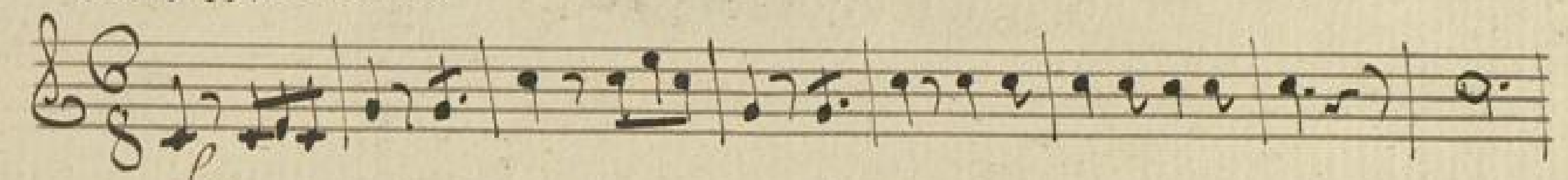
in D. Larghetto *fp:*

in C. *Allo giusto* *colla parte.* *39.* Solo

ib. 9



Allò con Brio.



Più allò.



The image shows ten blank musical staves arranged vertically on a single page of aged, yellowish paper. Each staff consists of five horizontal lines. The paper has a textured, slightly mottled appearance with some minor foxing and wear, particularly along the left edge where the binding is visible. There are some faint, illegible markings on the left side of the page, possibly bleed-through from the reverse side.