

# **Badische Landesbibliothek Karlsruhe**

**Digitale Sammlung der Badischen Landesbibliothek Karlsruhe**

## **Naturgeschichte der reißenden Thiere**

**Mann, Gustav**

**Stuttgart, 1857**

Illustration: Tafel A, B, C: Hand des Panthers, Hand des Jagdleopards,  
Hand des Hundes

[urn:nbn:de:bsz:31-108304](https://nbn-resolving.org/urn:nbn:de:bsz:31-108304)

Fig. 1.

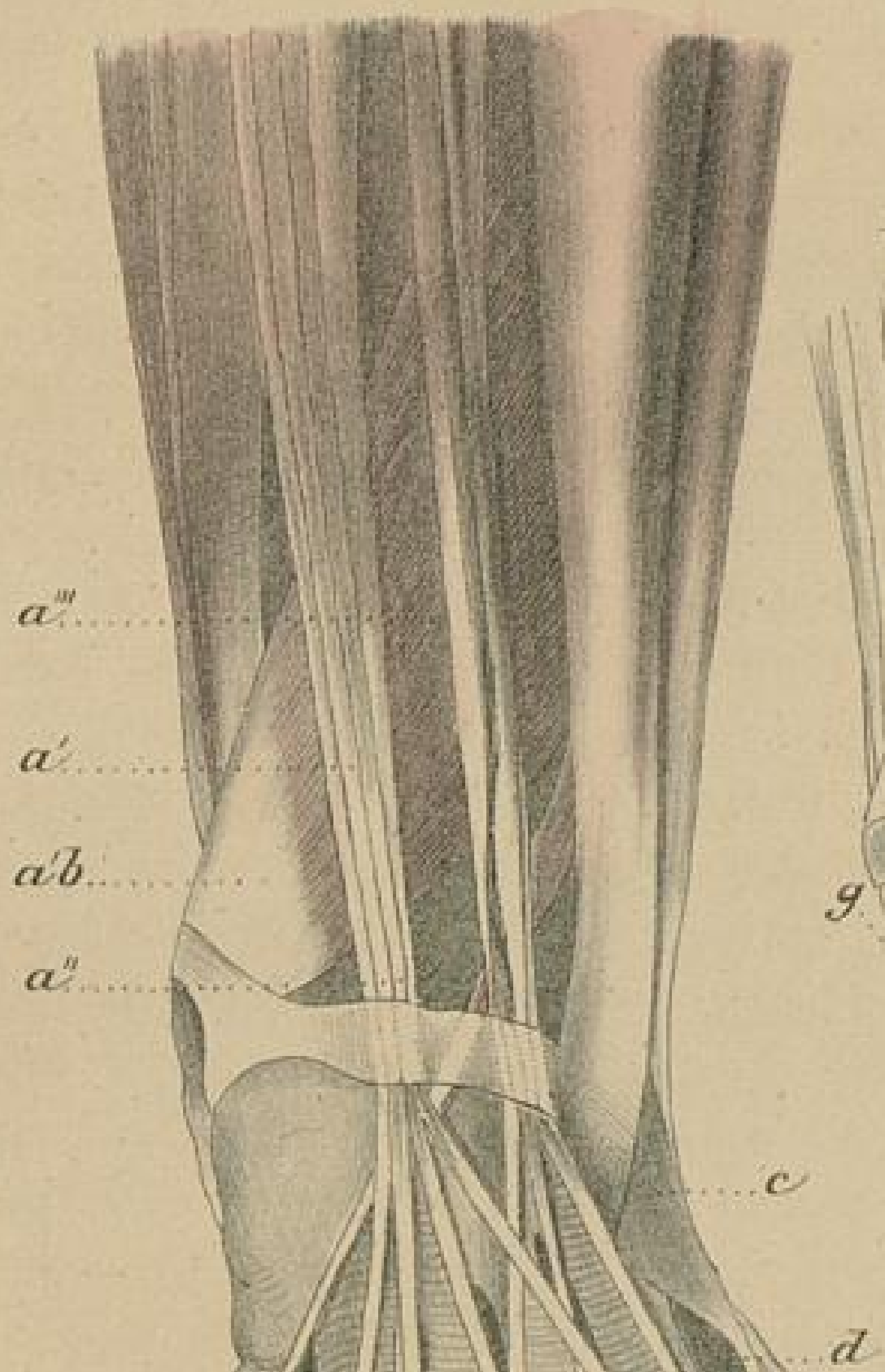


Fig. 4.

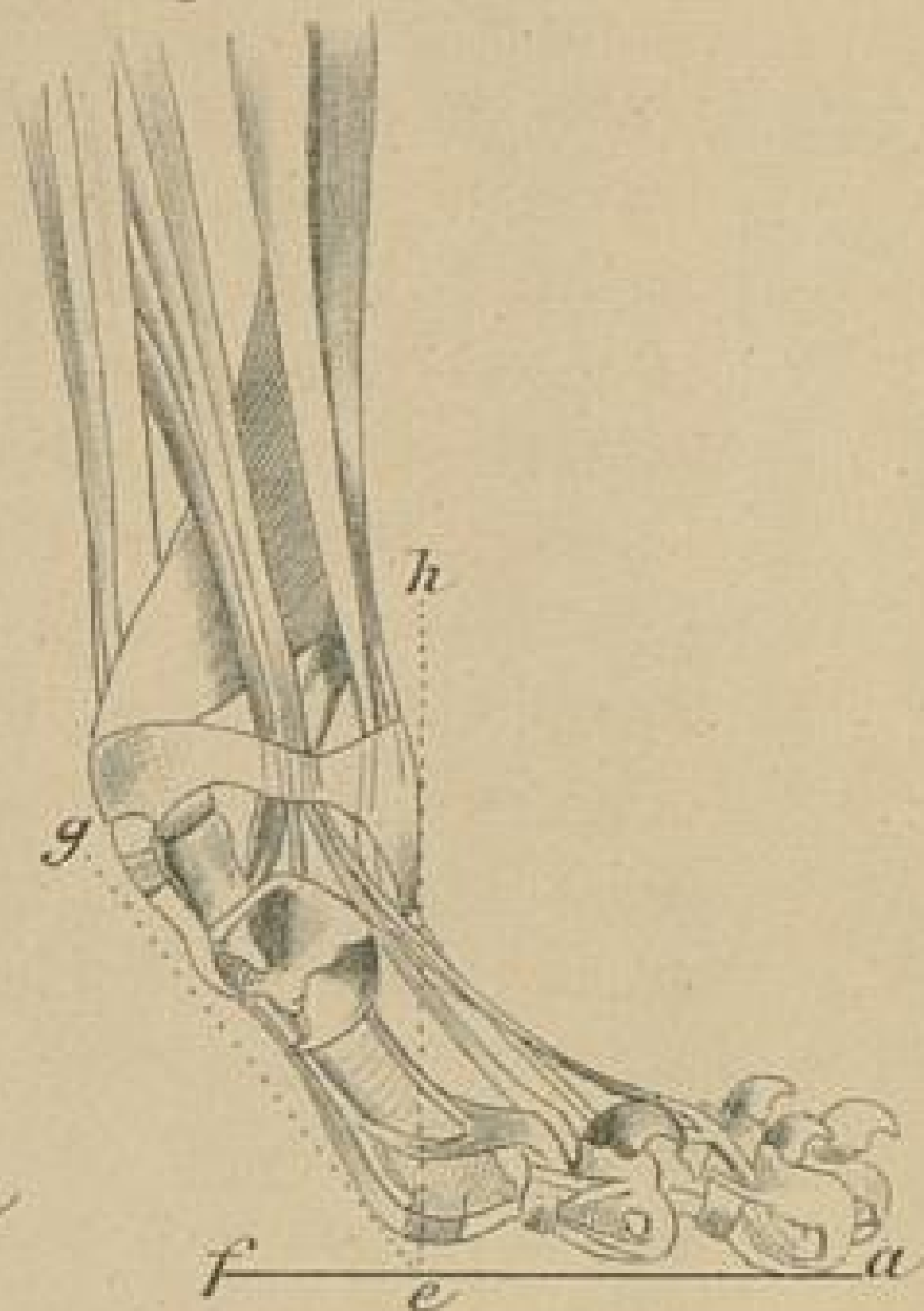


Fig. 2.  
äußere Seite

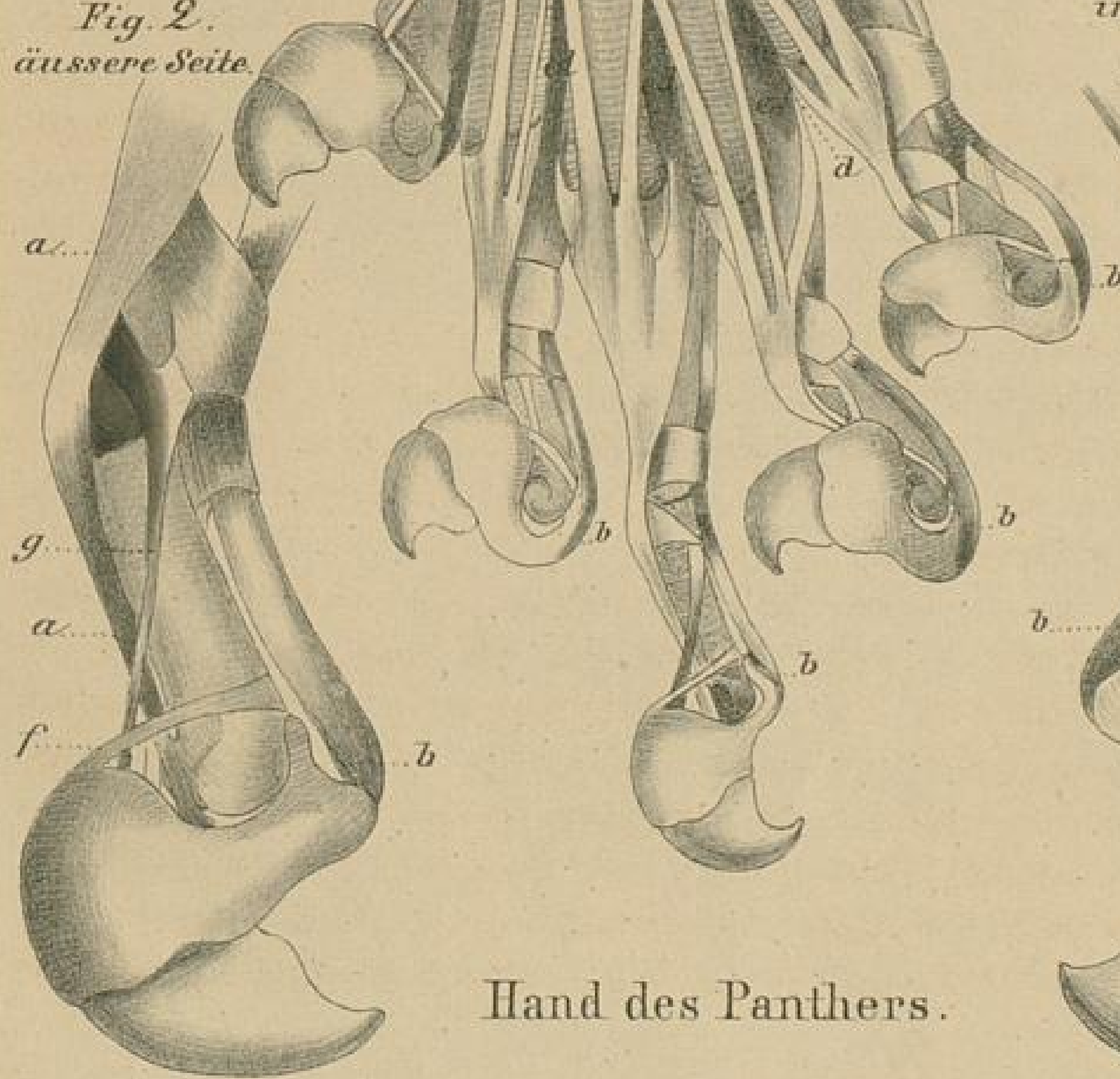
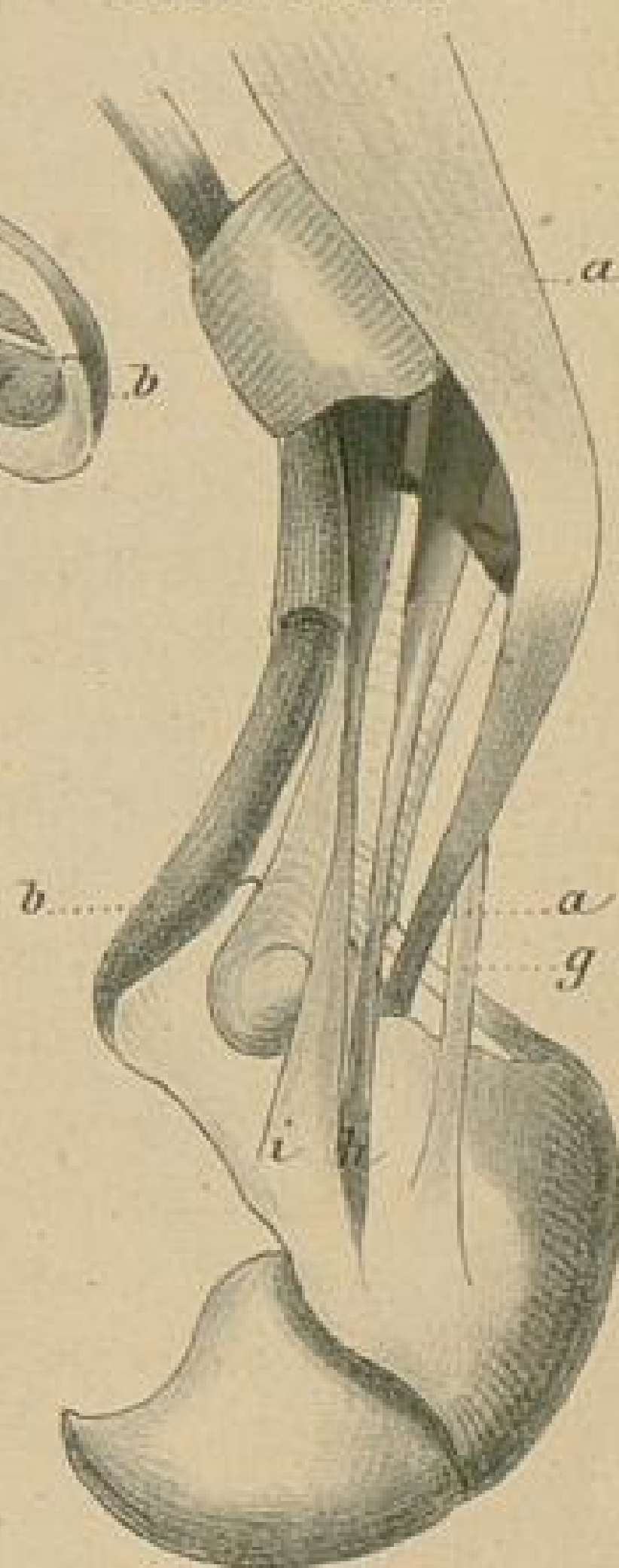


Fig. 3.  
innere Seite



Hand des Panthers.







Hand des Jagdleopards.

Fig. 1.

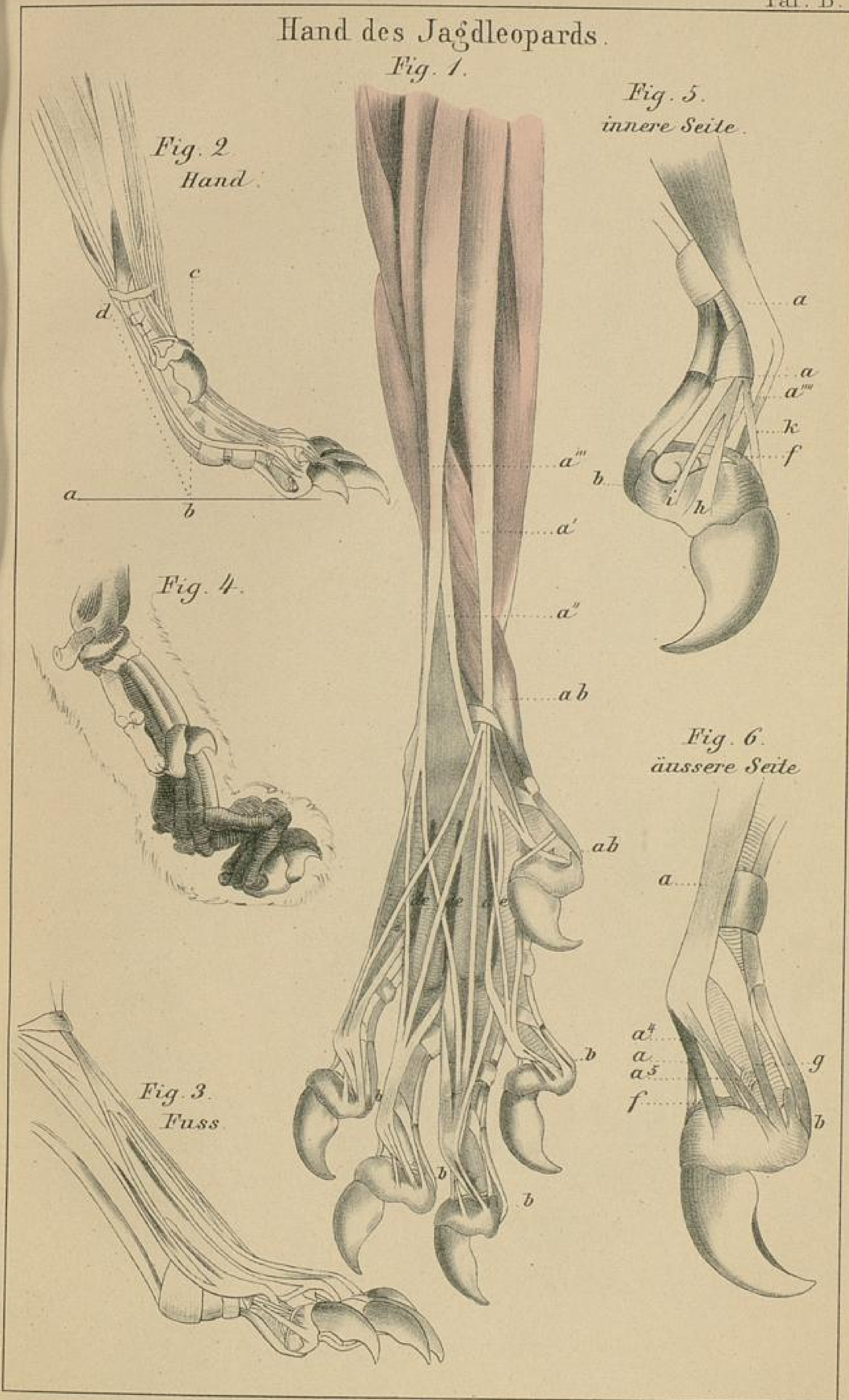
Fig. 5.  
innere Seite.

Fig. 2  
Hand.

Fig. 4.

Fig. 3.  
Fuss.

Fig. 6.  
äussere Seite





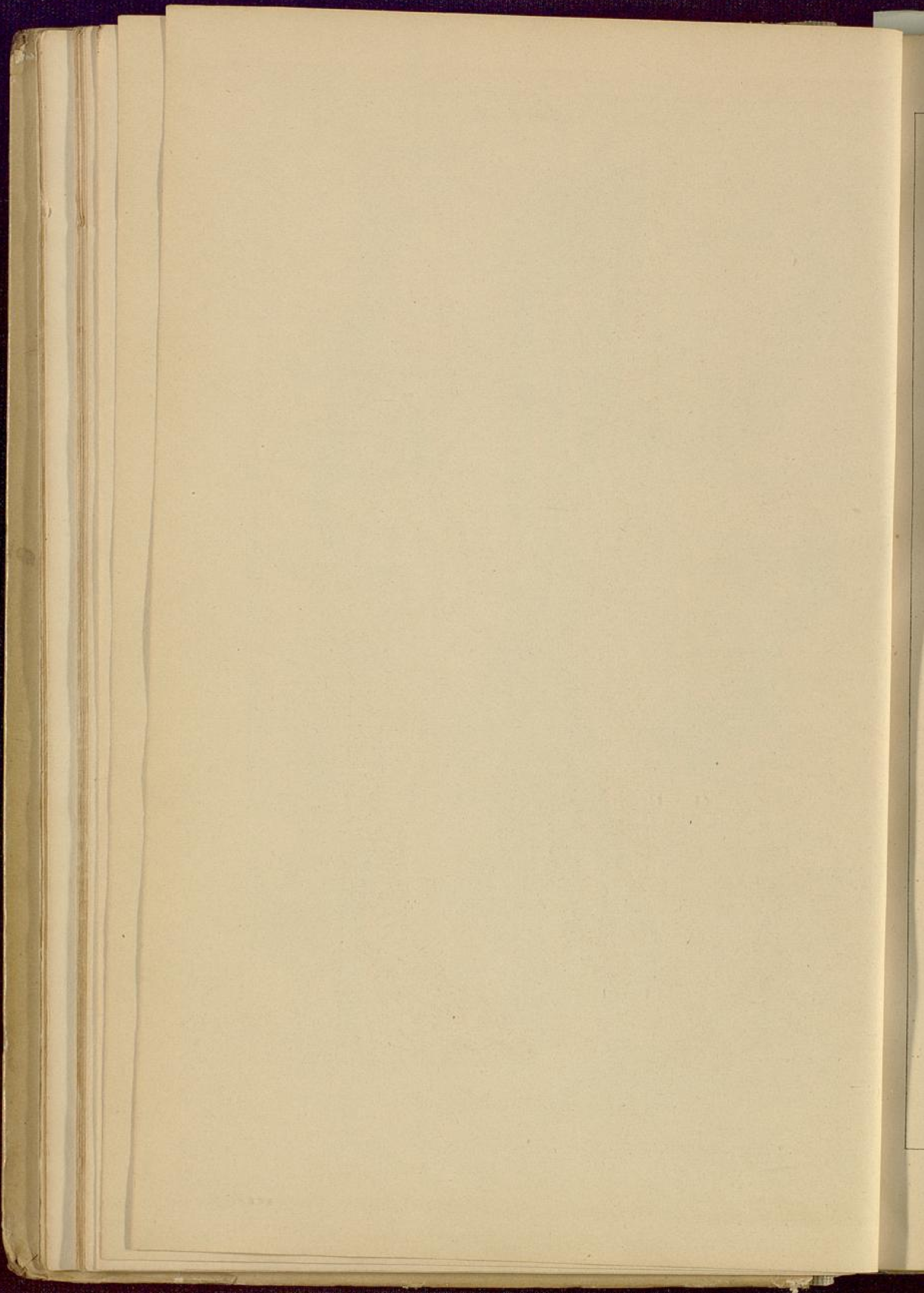




Fig. 2.  
4<sup>te</sup> Finger aussen.

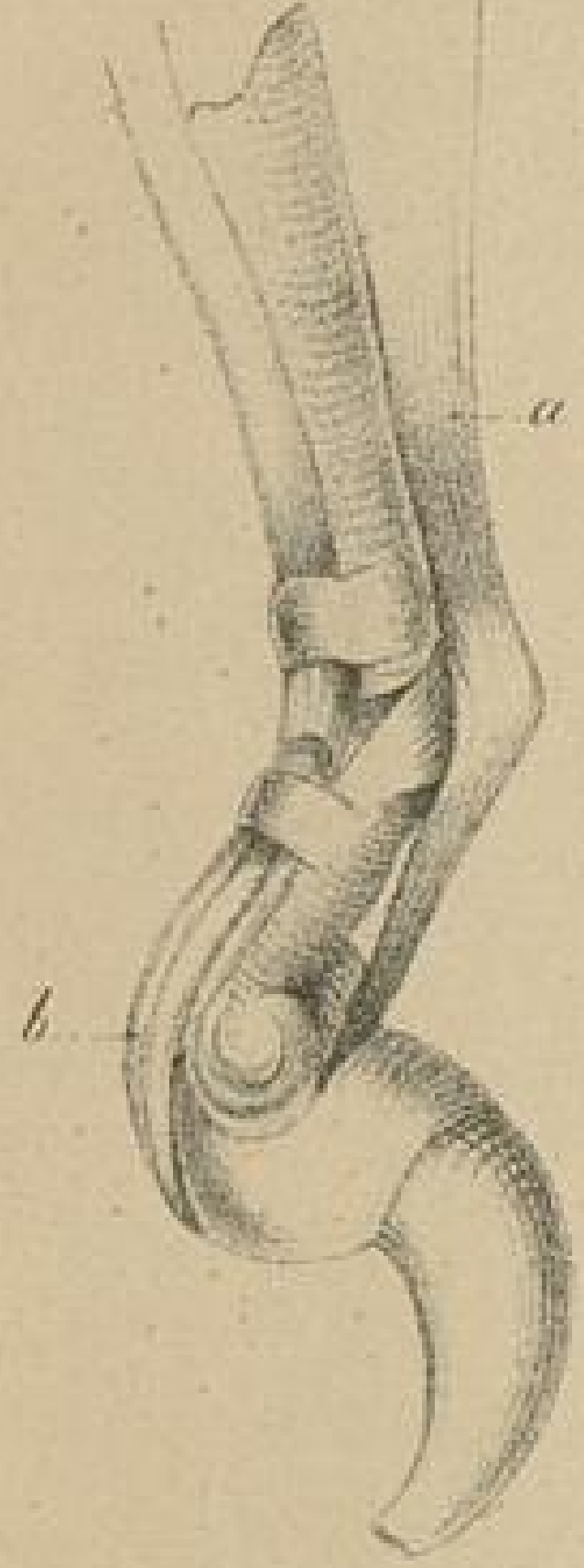


Fig. 1.

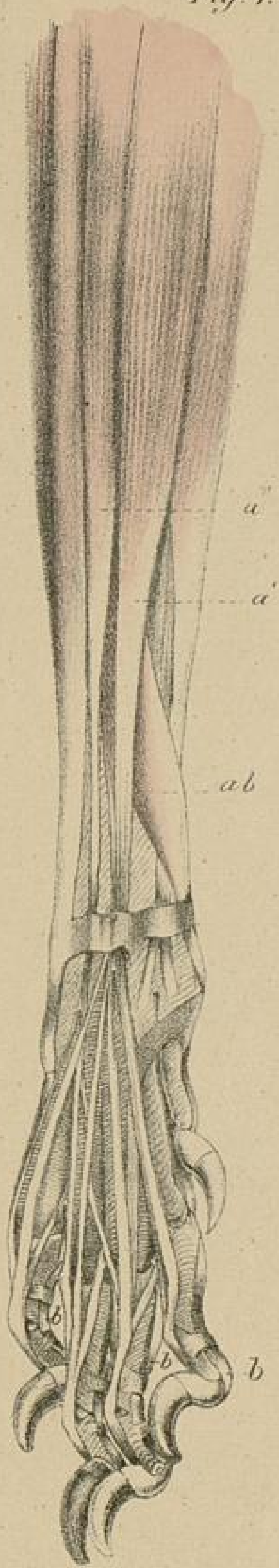


Fig. 3.  
4<sup>te</sup> Finger innen.



Daumen  
untere Seite

Fig. 5.

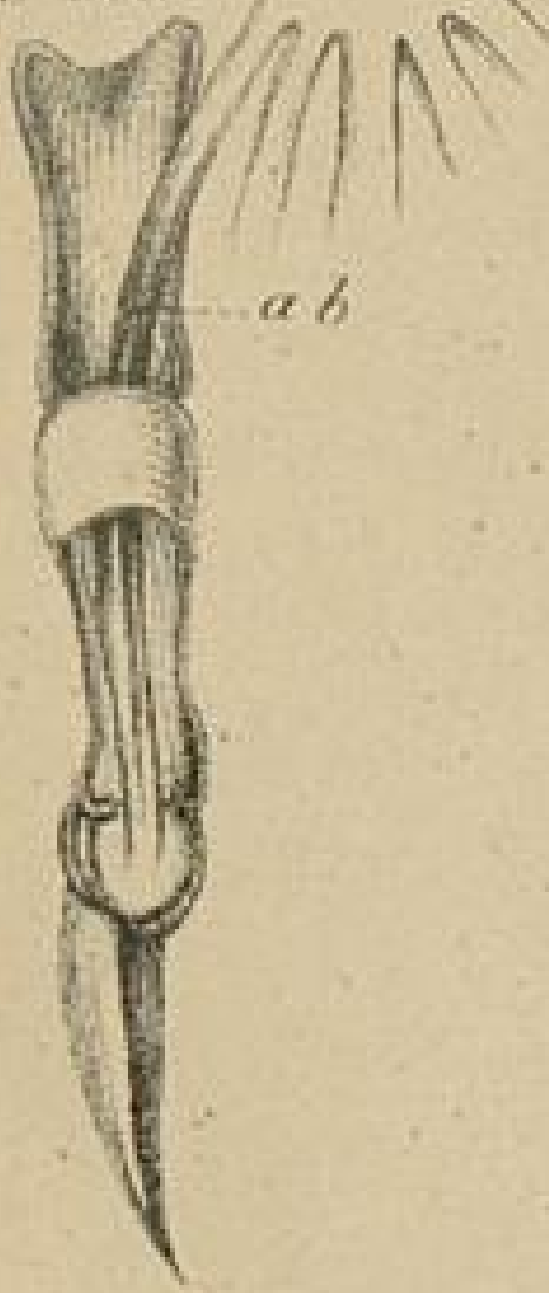


Fig. 4.



Hand des Hundes.

1791. M. 462. C. 1111.



