

# **Badische Landesbibliothek Karlsruhe**

**Digitale Sammlung der Badischen Landesbibliothek Karlsruhe**

## **Arias - Don Mus.Ms. 1510g**

**Kalivoda, Jan Křtitel Václav**

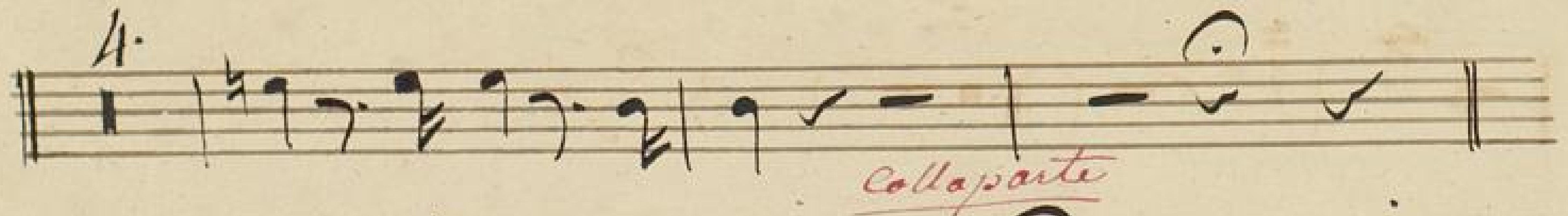
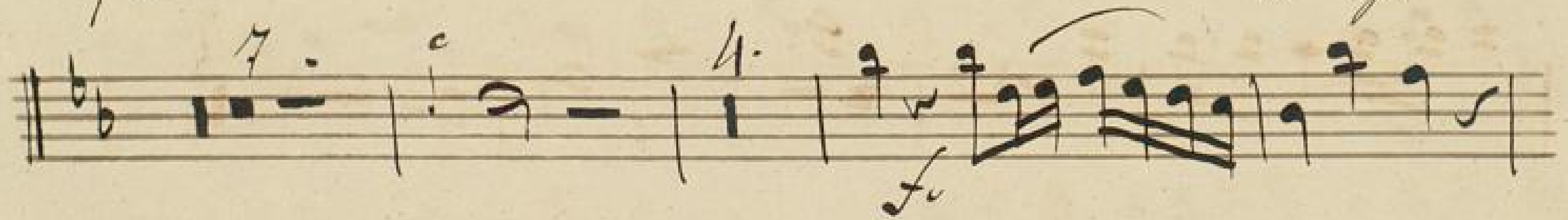
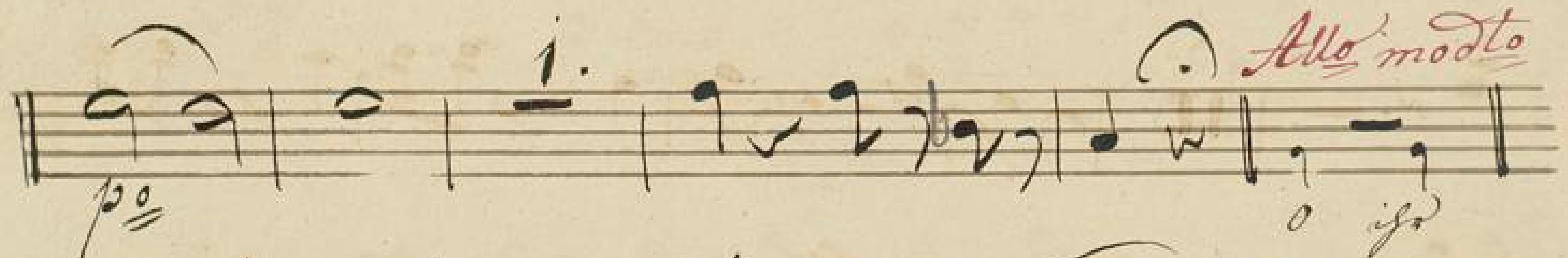
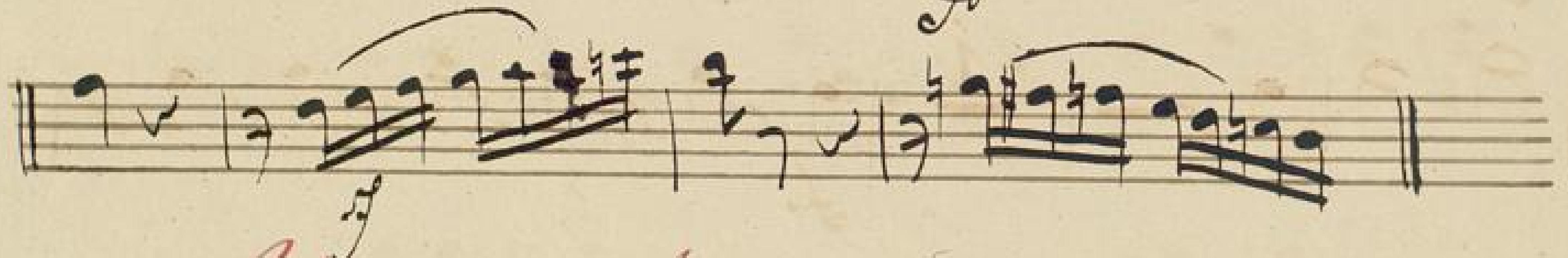
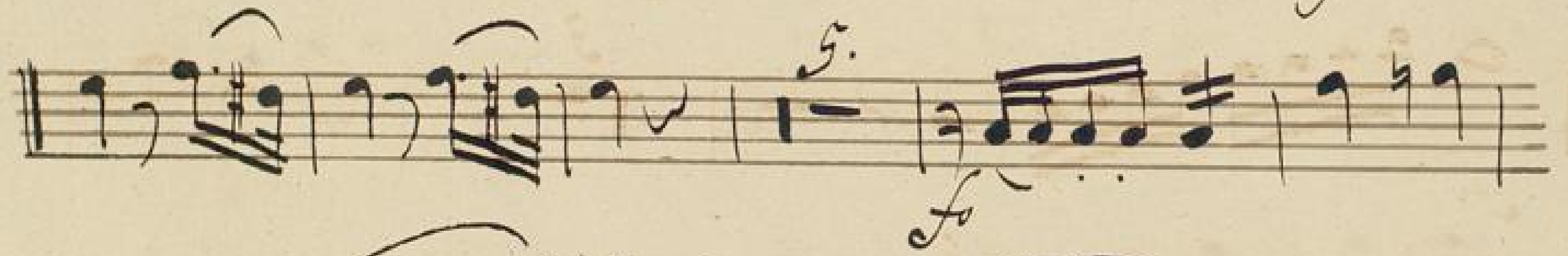
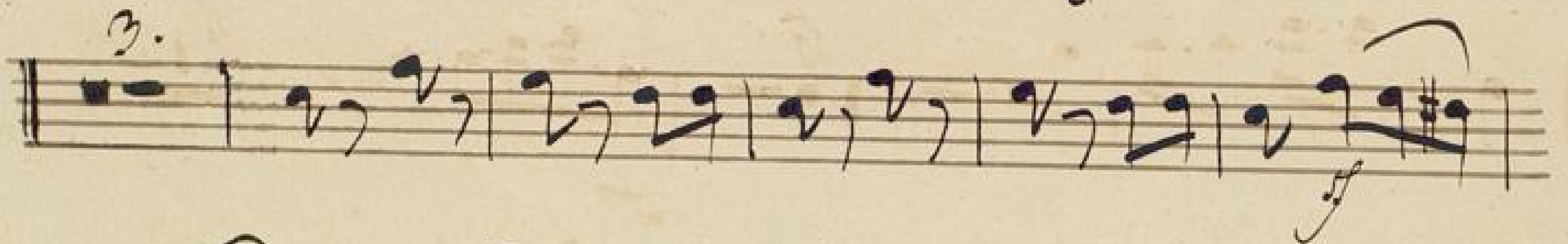
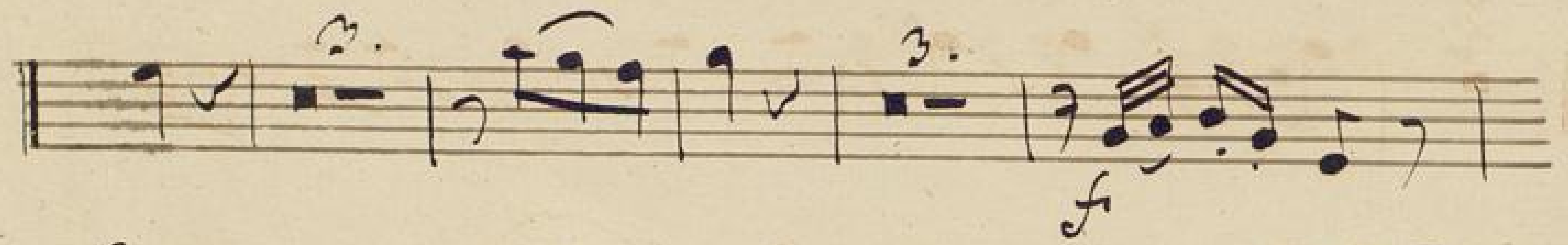
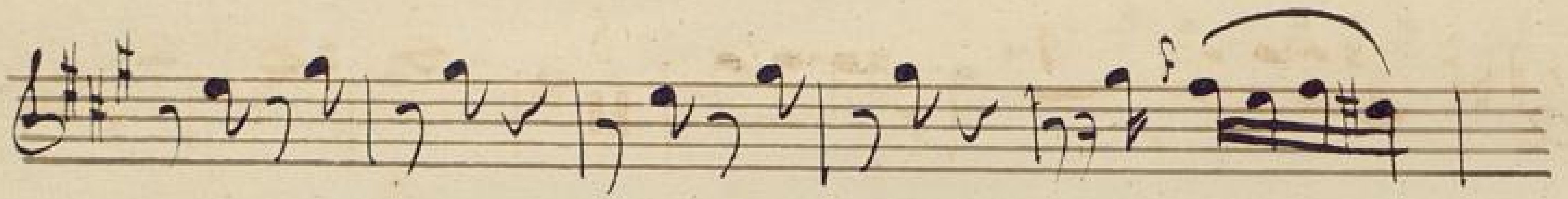
**[S.I.]**

1. Introduzione. Allegro moderato

[urn:nbn:de:bsz:31-107907](https://nbn-resolving.org/urn:nbn:de:bsz:31-107907)

*Introduzione* No. 1.

Allo modo  $\frac{2}{4}$



*allargando* *atempo*

Musical notation on a five-line staff with a treble clef and a key signature of two sharps (F# and C#). The notes are: G4, A4, B4, C5, B4, A4, G4, F#4, E4, D4, C4, B3, A3, G3, F#3, E3, D3, C3.

Musical notation on a five-line staff with a treble clef. The notes are: G4, A4, B4, C5, B4, A4, G4, F#4, E4, D4, C4, B3, A3, G3, F#3, E3, D3, C3.

Musical notation on a five-line staff with a treble clef. The notes are: G4, A4, B4, C5, B4, A4, G4, F#4, E4, D4, C4, B3, A3, G3, F#3, E3, D3, C3.

Musical notation on a five-line staff with a treble clef. The notes are: G4, A4, B4, C5, B4, A4, G4, F#4, E4, D4, C4, B3, A3, G3, F#3, E3, D3, C3.

Two empty musical staves.

No. 2.

*Andte*

*Duetto*

Musical notation on a five-line staff with a treble clef and a 2/4 time signature. The notes are: G4, A4, B4, C5, B4, A4, G4, F#4, E4, D4, C4, B3, A3, G3, F#3, E3, D3, C3.

Musical notation on a five-line staff with a treble clef. The notes are: G4, A4, B4, C5, B4, A4, G4, F#4, E4, D4, C4, B3, A3, G3, F#3, E3, D3, C3.

Musical notation on a five-line staff with a treble clef. The notes are: G4, A4, B4, C5, B4, A4, G4, F#4, E4, D4, C4, B3, A3, G3, F#3, E3, D3, C3.

*Collaparte*

Musical notation on a five-line staff with a treble clef. The notes are: G4, A4, B4, C5, B4, A4, G4, F#4, E4, D4, C4, B3, A3, G3, F#3, E3, D3, C3.

*altempo*

Musical notation on a five-line staff with a treble clef. The notes are: G4, A4, B4, C5, B4, A4, G4, F#4, E4, D4, C4, B3, A3, G3, F#3, E3, D3, C3.