

Badische Landesbibliothek Karlsruhe

Digitale Sammlung der Badischen Landesbibliothek Karlsruhe

Arias - Don Mus.Ms. 1510g

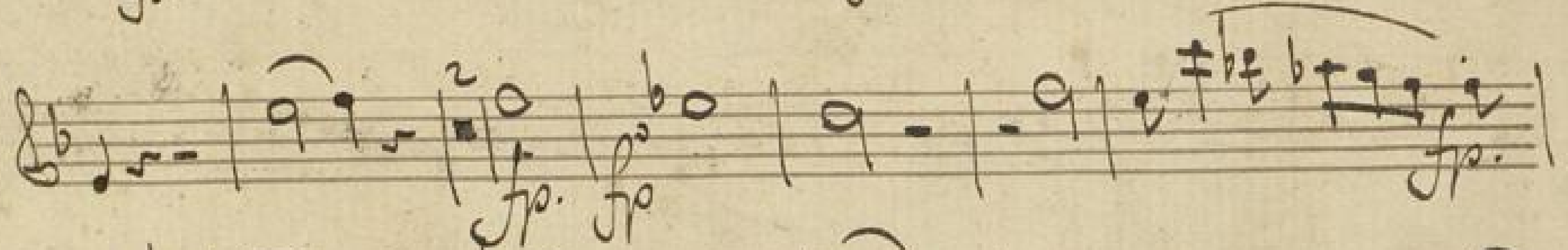
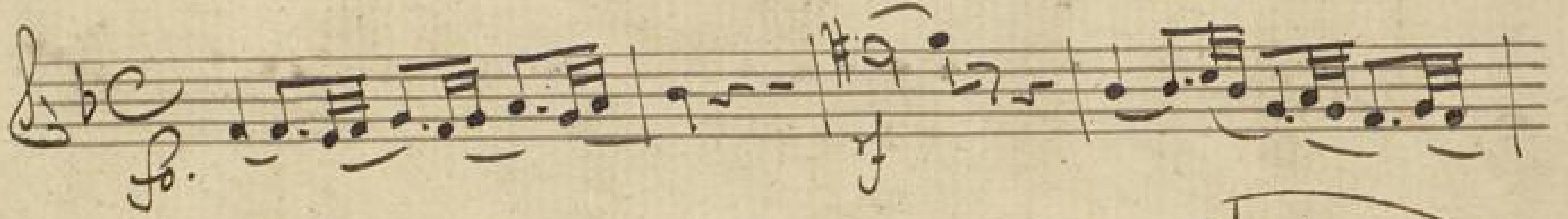
Kalivoda, Jan Křtitel Václav

[S.I.]

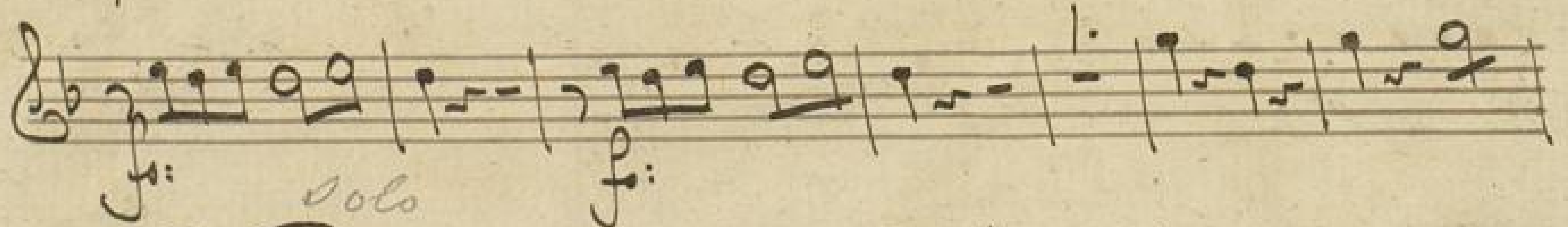
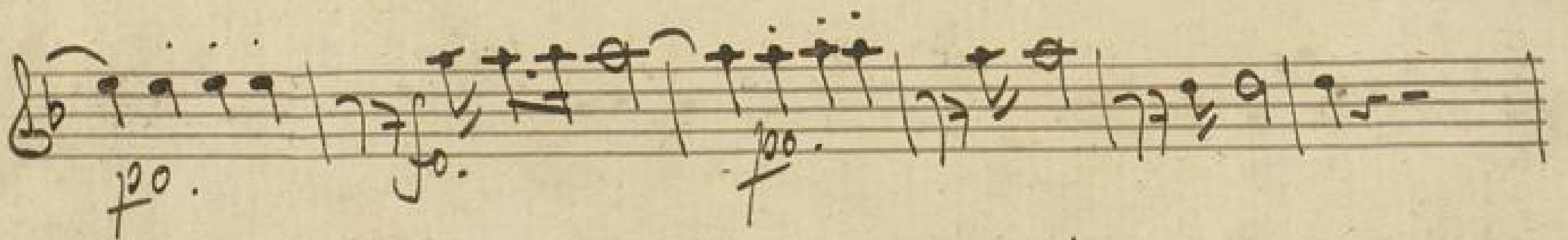
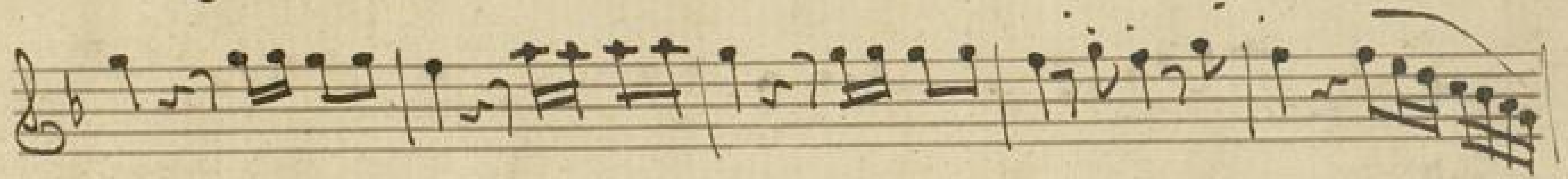
Ouverture. Larghetto

[urn:nbn:de:bsz:31-107907](https://nbn-resolving.org/urn:nbn:de:bsz:31-107907)

Overture. Larghetto. in A.



Allò non troppo.



Handwritten musical notation on a five-line staff. It features a melodic line with a slur and a '6.' marking above it. A 'p0:' dynamic marking is at the end.

Handwritten musical notation on a five-line staff. It features a melodic line with a '1.' marking above it. A 'f.' dynamic marking is below the staff.

Handwritten musical notation on a five-line staff. It features a melodic line with a '2' marking above it and a 'f.' dynamic marking below it.

Handwritten musical notation on a five-line staff. It features a melodic line with '1.' and '2' markings above it and 'f.' and 'sf.' dynamic markings below it.

Handwritten musical notation on a five-line staff. It features a melodic line with a '2' marking above it and a 'f.' dynamic marking below it.

Handwritten musical notation on a five-line staff. It features a melodic line with a '1.' marking above it and a 'f.' dynamic marking below it.

Handwritten musical notation on a five-line staff. It features a melodic line with '1.' and '8.' markings above it and a 'p0:' dynamic marking below it.

Handwritten musical notation on a five-line staff. It features a melodic line with a '17.' marking above it.

Handwritten musical notation on a five-line staff, featuring a complex melodic line with many notes and slurs.

Handwritten musical notation on a five-line staff, featuring a complex melodic line with many notes and slurs, ending with a 'f. Pub.' marking.

Handwritten musical score on ten staves. The notation includes treble clefs, a key signature of one sharp (F#), and various rhythmic values. The score is annotated with several performance instructions and dynamics:

- Staff 1: *pp*, *for.*, *pp*.
- Staff 2: *for.*
- Staff 3: *for.*
- Staff 4: *for.*
- Staff 5: *for.*, *pp*, *for.*
- Staff 6: *for.*, *colla parte. in tempo:*, *dolce.*, *pp*.
- Staff 7: *for.*
- Staff 8: *for.*, *pp*.
- Staff 9: *for.*, *pp*.
- Staff 10: *for.*, *pp*.

Other markings include *And. sostenuto.* and *And. tacet.* at the end of the piece.