

# **Badische Landesbibliothek Karlsruhe**

**Digitale Sammlung der Badischen Landesbibliothek Karlsruhe**

## **13 Romances - Don Mus.Ms. 2753**

**[S.l.], 1840-1860 (19.me)**

Anonymus: Nanna. d-Moll

[urn:nbn:de:bsz:31-108000](https://nbn-resolving.org/urn:nbn:de:bsz:31-108000)

Pietro.

And<sup>no</sup> quasi *Allo*

Le flot gros-

rit le ciel est noir, Pietro pour quoi partir ce soir? Lui dit sa

Maiour:  
mère, "L'an passé j'eus beau l'aver-tir ton frere aus"

si voulut partir ton pauvre frè-re!... Pietro van,

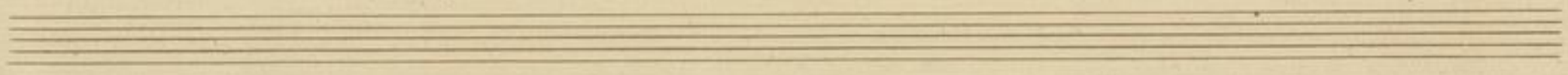
Handwritten musical score for the first system. It consists of a vocal line on a single staff and a piano accompaniment on two staves. The key signature has one sharp (F#) and the time signature is 3/4. The lyrics are "si voulut partir ton pauvre frè-re!...". The piano part includes dynamic markings *ppp.* and *pp.*

~~tant dans la na-cel-le qui fuit loin d'elle dit en par~~

Handwritten musical score for the second system, which is crossed out with a large 'X'. The lyrics are "tant dans la na-cel-le qui fuit loin d'elle dit en par". The notation includes a vocal line and piano accompaniment.

tant Nan-na m'ap-pel-le elle est si

Handwritten musical score for the third system. It consists of a vocal line on a single staff and a piano accompaniment on two staves. The key signature has one sharp (F#) and the time signature is 3/4. The lyrics are "tant Nan-na m'ap-pel-le elle est si". The piano part includes dynamic markings *fz.*



Handwritten musical score for the first system. The top staff is a vocal line in treble clef with a key signature of one sharp (F#) and a common time signature. The lyrics are "bel - le je l'aime tant - je l'aime". The bottom two staves are for piano accompaniment, with the left hand in bass clef and the right hand in treble clef. The piano part includes a dynamic marking *pp*.

Handwritten musical score for the second system. The top staff continues the vocal line with the lyrics "tant". The piano accompaniment continues in the two staves below, featuring a dynamic marking *pp*. The system concludes with a double bar line and a fermata over the final notes.