

# **Badische Landesbibliothek Karlsruhe**

**Digitale Sammlung der Badischen Landesbibliothek Karlsruhe**

**3 Pieces. Excerpts. Arr - Don Mus.Ms. 1558|1**

**[S.l.], 1807 (1807)**

Flöte I

[urn:nbn:de:bsz:31-108928](https://nbn-resolving.org/urn:nbn:de:bsz:31-108928)

Quetto II. Allegro non troppo.

Handwritten musical score for a string quartet, page 14. The score consists of eight staves of music. The first staff is the title and tempo. The second and third staves are the first and second violin parts. The fourth and fifth staves are the first and second viola parts, featuring many double bar lines and dynamic markings like 'f' and 'dol'. The sixth and seventh staves are the first and second cello parts. The eighth staff is the first bass part, starting with a 'dol.' marking. The music is in a common time signature and features various rhythmic patterns and dynamics.



A page of handwritten musical notation on eight staves. The notation includes various note values, rests, and dynamic markings. The first staff begins with a treble clef and a key signature of one sharp (F#). The second staff contains the dynamic marking *mol.* (molto). The fourth staff contains the dynamic marking *f* (forte). The fifth staff features a series of whole notes. The sixth staff includes a key signature change to one sharp (F#). The notation is dense and characteristic of 18th or 19th-century manuscript notation.



Handwritten musical score on ten staves. The notation includes various note values, rests, and dynamic markings such as "dol." and "f". The manuscript is written in a historical style with a treble clef and a key signature of one flat.

Pro  
G

G

G

G

G

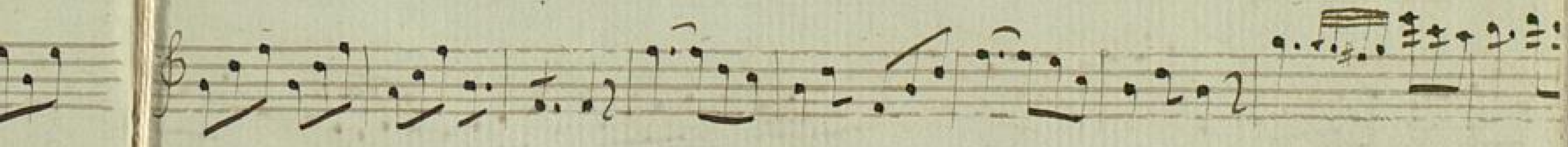
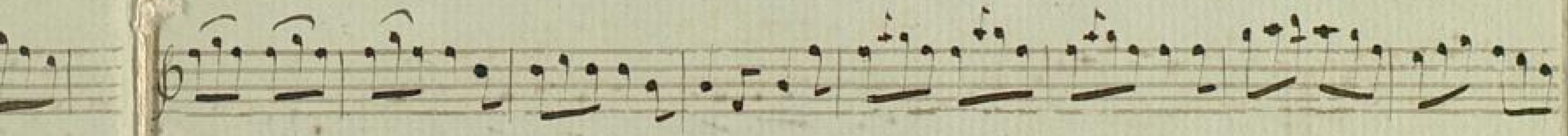
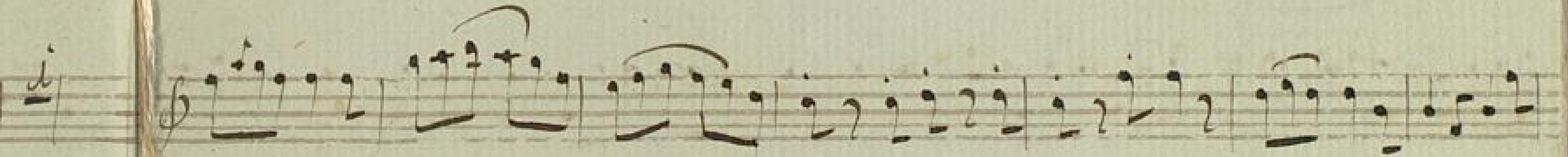
G

G





Rondo.





The page contains six staves of handwritten musical notation. The first staff begins with a treble clef and a key signature of one flat (B-flat). The notation includes various rhythmic values, including eighth and sixteenth notes, and rests. Above the first staff, there are several groups of small, illegible markings, possibly indicating fingerings or performance instructions. The second and third staves continue the melodic line with similar rhythmic patterns. The fourth staff starts with a new key signature of two flats (B-flat and E-flat) and includes the instruction "Minore." written above the staff. Below this staff, the instruction "D. Capo III al fine." is written. The fifth and sixth staves continue the piece, with the sixth staff ending with a dynamic marking of "p." (piano).



