

# **Badische Landesbibliothek Karlsruhe**

**Digitale Sammlung der Badischen Landesbibliothek Karlsruhe**

**3 Pieces. Excerpts. Arr - Don Mus.Ms. 1558|1**

**[S.l.], 1807 (1807)**

Flöte II

[urn:nbn:de:bsz:31-108928](https://nbn-resolving.org/urn:nbn:de:bsz:31-108928)

Handwritten musical notation on four staves. The notation includes various note values, rests, and dynamic markings. The first staff begins with a treble clef and a common time signature. The music features a mix of eighth and sixteenth notes, often beamed together. There are several instances of double lines under notes, possibly indicating accents or specific performance techniques. The notation is dense and fills most of the staves.

*Duetto III. Allegro.*

Handwritten musical notation for "Duetto III. Allegro." on four staves. The first staff starts with a treble clef and a common time signature. The notation is characterized by frequent sixteenth-note patterns and rests. There are several measures with multiple notes beamed together, creating a rhythmic texture. The notation is dense and fills most of the staves.

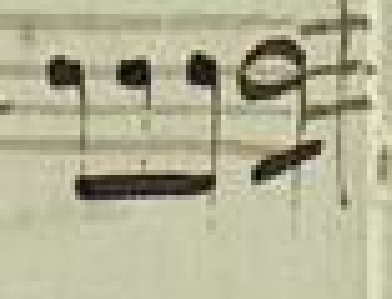
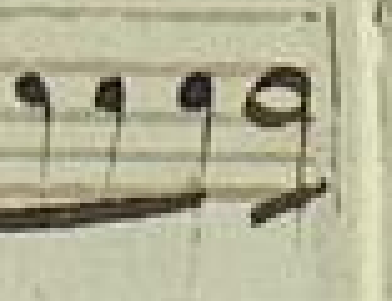
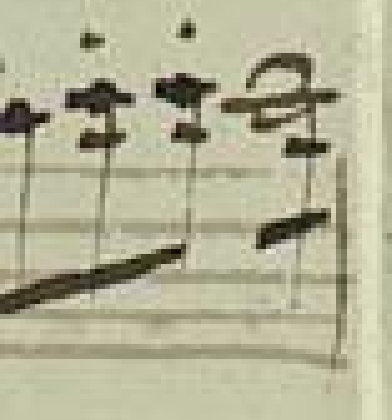
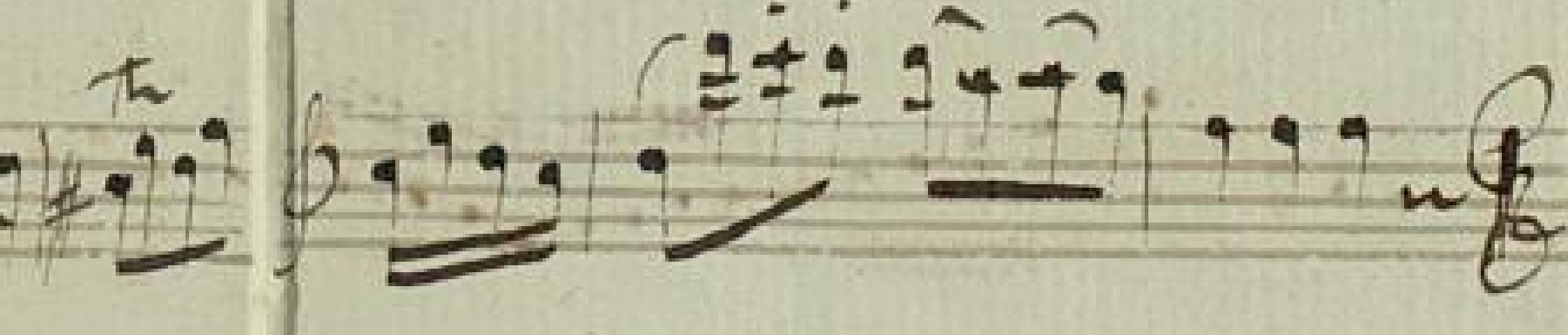


This image shows a page of handwritten musical notation, likely a manuscript. The page is numbered '19' in the top right corner. It contains ten staves of music, each with a treble clef. The notation includes various note values (quarter, eighth, and sixteenth notes), rests, and dynamic markings such as 'p' (piano) and 'f' (forte). There are also some slurs and phrasing marks. The handwriting is in dark ink on aged, slightly yellowed paper. The music appears to be a single melodic line, possibly for a violin or flute. The staves are arranged vertically, with some overlapping or very close spacing between them.



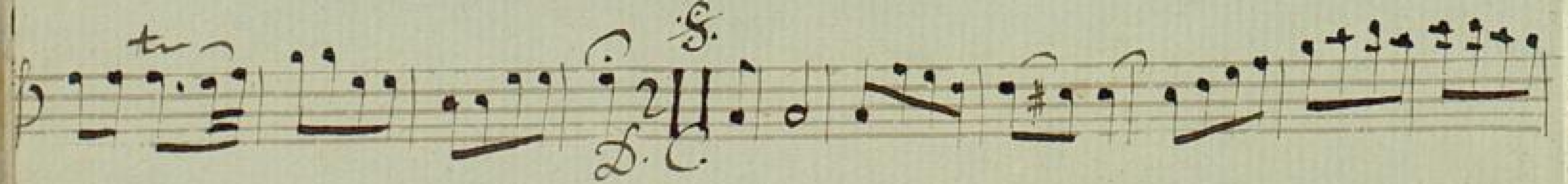
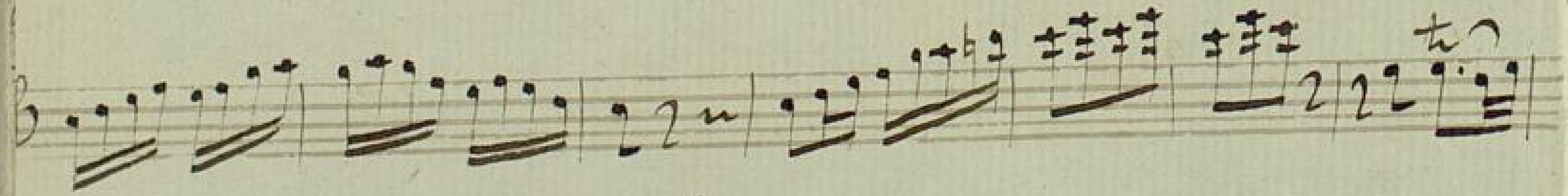
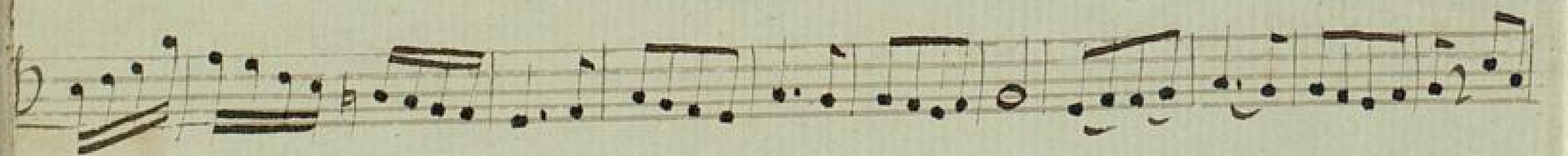
A page of handwritten musical notation on ten staves. The notation is in a historical style, likely from the 18th or 19th century. It features various note values, including minims, crotchets, and quavers, along with rests and accidentals. The staves are connected by a single line on the left. The paper shows signs of age, with some staining and wear at the edges. The key signature appears to be one sharp (F#), and the time signature is not clearly visible but seems to be common time (C).



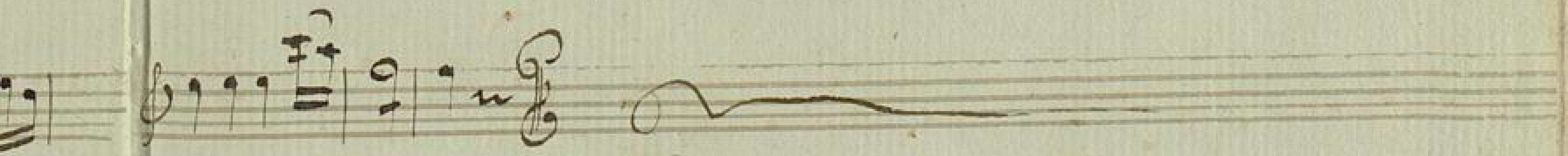
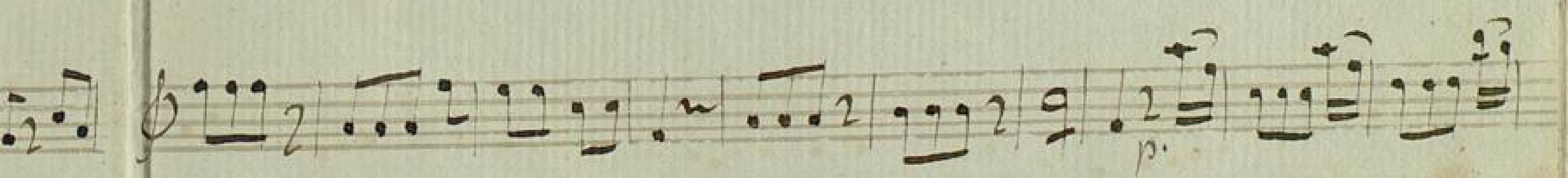
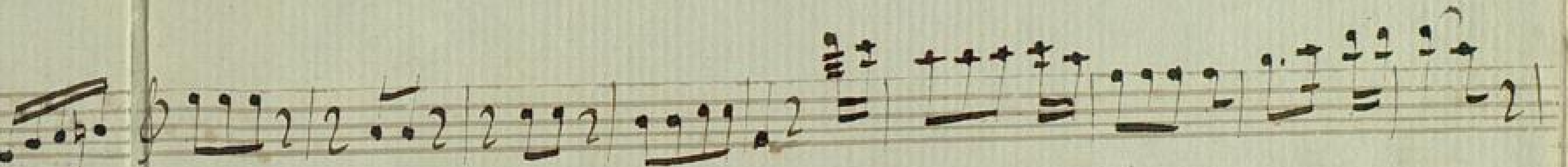




Rondo.  
S.









A page of blank musical manuscript paper with 12 horizontal staves. The paper is aged and yellowed, with some faint smudges and a small stain near the bottom center. The staves are evenly spaced and run across the width of the page. The left edge shows the binding of the book, and the right edge shows the gutter where the page meets the next.























