

Badische Landesbibliothek Karlsruhe

Digitale Sammlung der Badischen Landesbibliothek Karlsruhe

Regina caeli - Don Mus.Ms. 1618

[S.l.], 1700-1749 (18.1d)

Gesangsstimmen

[urn:nbn:de:bsz:31-109537](https://nbn-resolving.org/urn:nbn:de:bsz:31-109537)

Cantus I^{mg}

Annus No 1618

Ande.

allegro

solo

Handwritten musical notation on a five-line staff, featuring a treble clef and a 7/8 time signature. The notes are mostly quarter and eighth notes, with some rests.

Regina Cæli

alleluia alleluia. Quia quem meruisti portare

Tutti

Handwritten musical notation on a five-line staff, continuing the melody from the first staff. It includes a 7/8 time signature and various note values.

portare alleluia portare portare alleluia

alleluia

solo

Handwritten musical notation on a five-line staff, featuring a treble clef and a 7/8 time signature. The notes are mostly quarter and eighth notes.

Resurrexit

resurrexit

sicut dixit alle-

Tutti

solo

Handwritten musical notation on a five-line staff, continuing the melody. It includes a 7/8 time signature and various note values.

luia resurrexit sicut dixit alleluia.

alleluia

Ora

Tutti

Handwritten musical notation on a five-line staff, featuring a treble clef and a 7/8 time signature. The notes are mostly quarter and eighth notes.

ora pro nobis Deum ora ora pro nobis Deum ora ora ora pro

Handwritten musical notation on a five-line staff, featuring a treble clef and a 7/8 time signature. The notes are mostly quarter and eighth notes.

nobis Deum alleluia.

Cantus II^{us}
Solo

Mus No 1618

Tardè.

allegro

Regina Cæli alleluia —:— Quia quem meruisti portare por-

tare alle - luia portare portare alleluia alleluia —:—

alleluia —:— Ora ora pro nobis Deum Ora ora pro nobis Deum ora

ora —:— ora pro nobis Deum alle - luia.

Fandè

solo allegro.

Altus

Am. No 1648

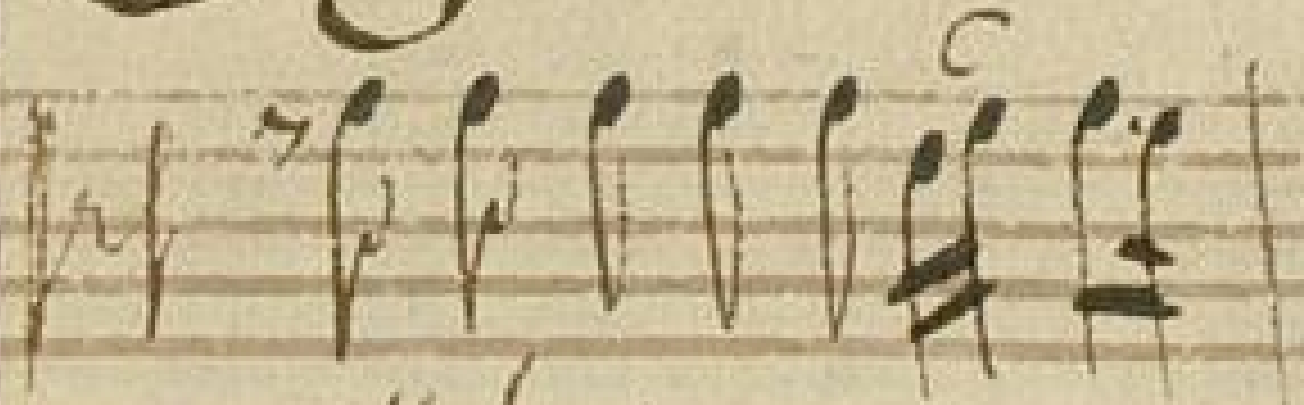
1



Regina Cæli

Latere alleluia

alleluia

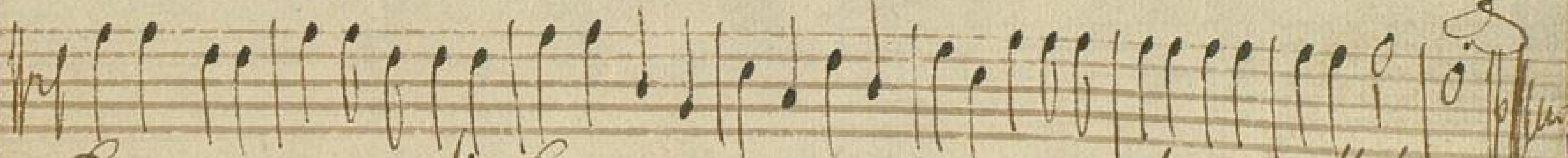


alleluia

alleluia

solo.

Dea ora pro nobis



Deum ora ora pro nobis Deum ora ora — — ora pro nobis Deum alleluia.

This image shows a page of aged, yellowed musical manuscript paper with ten horizontal staves. The paper has a rough, torn edge on the left side. Faint, handwritten musical notation is visible on the first three staves. The notation consists of small, dark marks and lines, possibly representing notes or rests, though they are too light to be clearly identified. There are also a few small, dark spots scattered across the page, likely due to age or handling. The overall appearance is that of an old, partially written musical score.

Fardè.

solo allegro Tenor

anno Ms 1618 1

Regina Cæli *letare alle luj a* *alleluia*

alleluia *alleluia* *ora ora pro nobis*

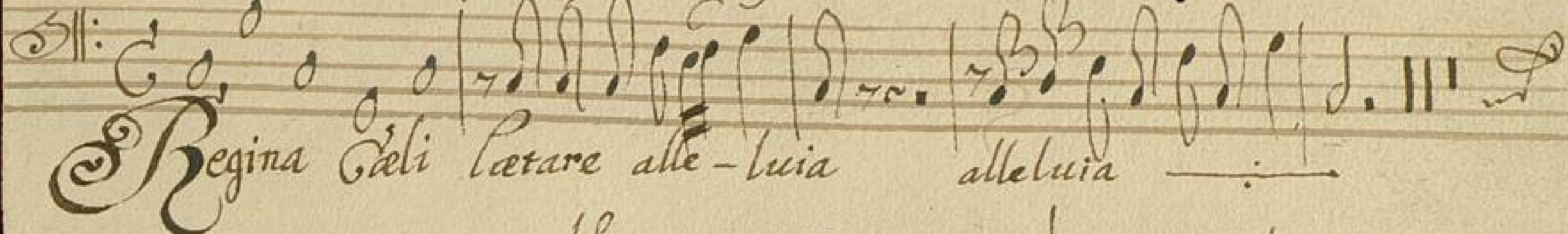
Deum ora ora *pro nobis Deum alleluia.*

Fardè.

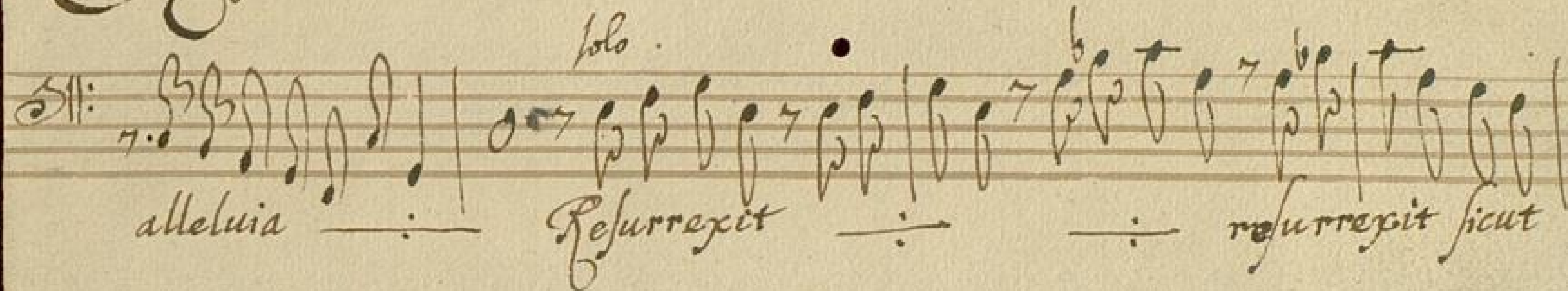
Solo allegro Bassus

Mus No 1618


1

St: 

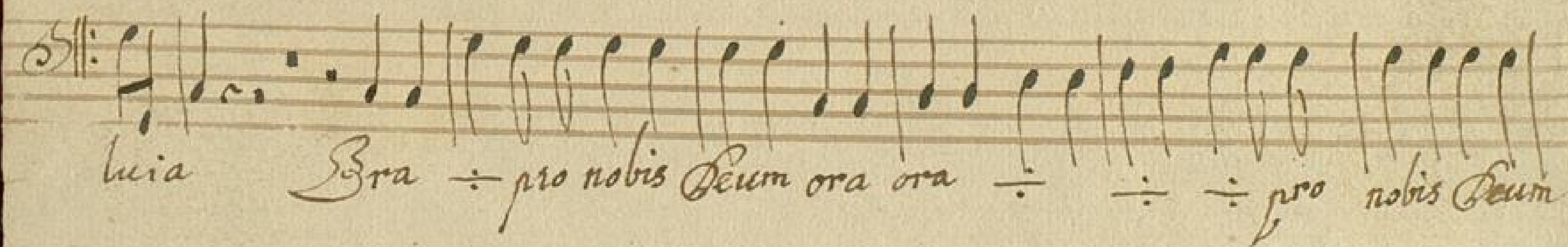
Regina Caeli letare alle-luia alleluia

St: 

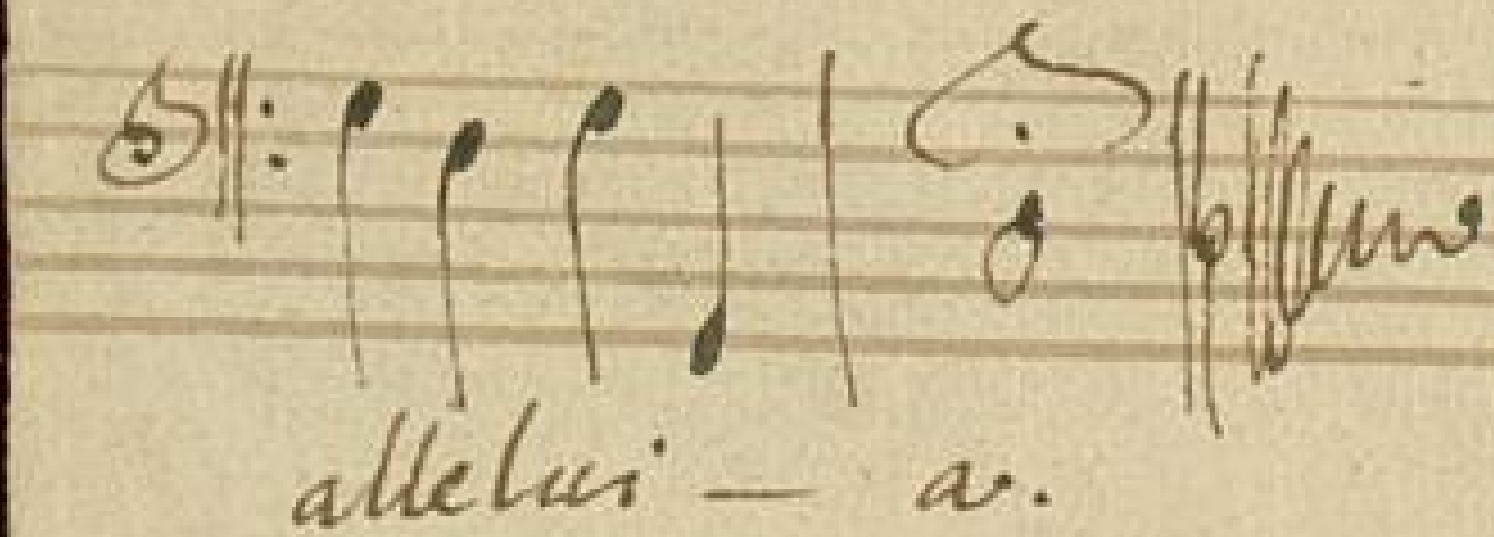
alleluia Resurrexit

St: 

resurrexit sicut dixit alle-luia

St: 

alleluia Bra pro nobis Deum ora ora

St: 

allelui - a.

