

# **Badische Landesbibliothek Karlsruhe**

**Digitale Sammlung der Badischen Landesbibliothek Karlsruhe**

## **Die Schweizerfamilie - Don Mus.Ms. 2018a-d**

**Weigl, Joseph**

**[S.l.], 1810 (1810c)**

6. Finale. Allegro moderato

[urn:nbn:de:bsz:31-109581](https://nbn-resolving.org/urn:nbn:de:bsz:31-109581)

Handwritten musical notation on two staves. The first staff begins with a treble clef, a key signature of one flat (B-flat), and a dynamic marking of *pp*. The second staff continues the melody with a fermata over the final note.

*N<sup>o</sup> 6 Finale.*

*in C.*

Handwritten musical notation on a single staff. It begins with the tempo marking *Allo mod<sup>to</sup>* and a treble clef. The key signature is C major.

Handwritten musical notation on a single staff, continuing the piece.

Handwritten musical notation on a single staff, featuring a triplet of eighth notes.

Handwritten musical notation on a single staff.

Handwritten musical notation on a single staff, featuring a triplet of eighth notes.

Handwritten musical notation on a single staff.

Handwritten musical notation on a single staff. It includes the tempo marking *Allegretto* and a measure number of 36.

Handwritten musical notation on a single staff. It includes a measure number of 14 and the key signature *in C.*



*in C.*

*Andantino*  $\frac{3}{4}$  <sup>12</sup> <sub>pp</sub>

<sup>11</sup>

27

<sup>3.</sup>

<sup>4.</sup> <sup>67.</sup>

<sup>2.</sup>

<sup>9.</sup> <sup>5.</sup>

<sup>4.</sup> <sup>1.</sup>

<sup>13</sup> *in C.*

*V. S.*



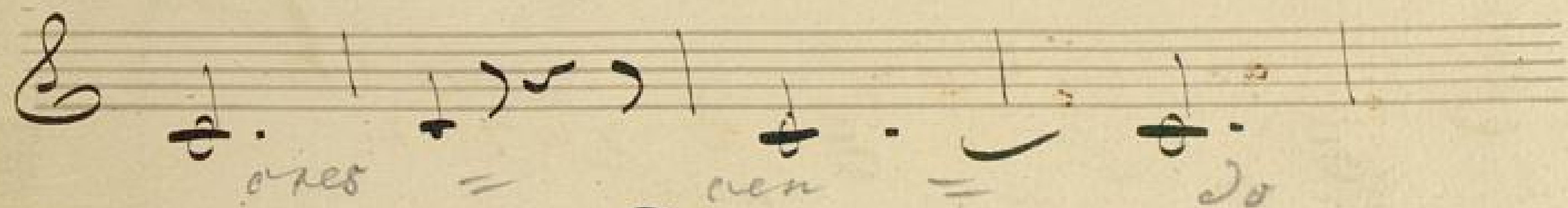
*in C'*

*Andantino*  $\text{C} \frac{6}{8}$   $\text{C}^{\#}$

28

Handwritten musical score for a piece in C major, 6/8 time, marked *Andantino*. The score consists of 12 staves of music. The first staff is the title line. The second staff begins with a treble clef and a common time signature. The music is written in a cursive hand. There are various annotations such as 'C#' above the first staff, 'i.' above the third and fourth staves, and '5.' above the ninth staff. The piece concludes with a double bar line and a dynamic marking 'pp' (pianissimo) at the end of the twelfth staff.





*Fine del Achtto 2<sup>do</sup>*

*Quverture et Chor. Achtto 3<sup>do</sup>*

*in D.*

*Andante*

