

Badische Landesbibliothek Karlsruhe

Digitale Sammlung der Badischen Landesbibliothek Karlsruhe

Il Barbiere di Siviglia - Don Mus.Ms. 1683a-h

Rossini, Gioachino

[S.l.], 1820 (1820c)

Ouverture. Andante

[urn:nbn:de:bsz:31-111227](https://nbn-resolving.org/urn:nbn:de:bsz:31-111227)

Overture Violino primo.

Andte *ff* *po*

Musical staff with notes and rests.

Musical staff with notes and rests.

rallent. *Allo*

po

Musical staff with notes and rests.

Musical staff with notes and rests.

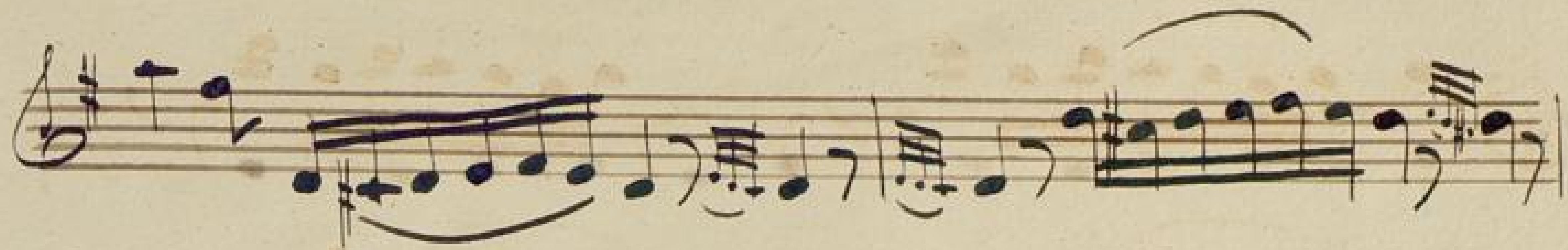
Musical staff with notes and rests.

Musical staff with notes and rests.

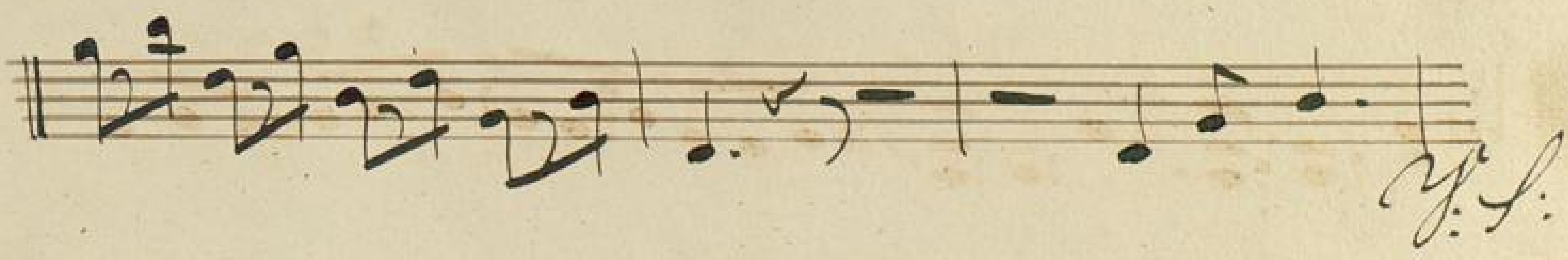
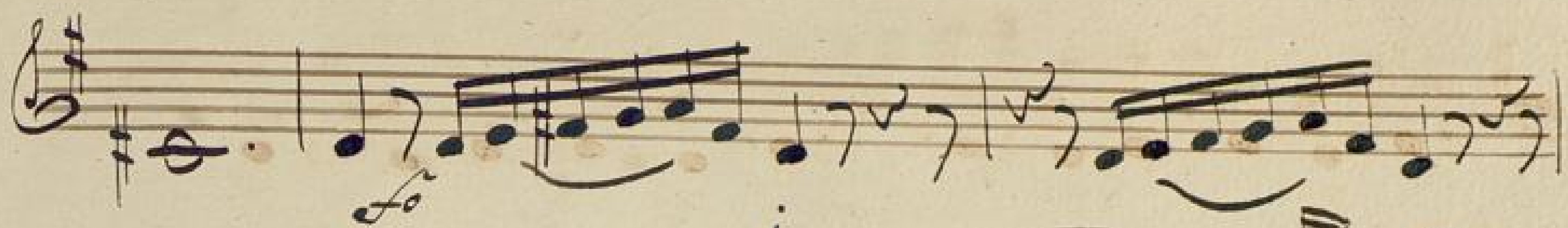


J. S.

A page of handwritten musical notation on ten staves. The notation includes various note values, rests, and dynamic markings. The first staff begins with a treble clef and a key signature of one sharp (F#). The music features complex rhythmic patterns, including sixteenth and thirty-second notes, and rests. Dynamic markings such as 'f' (forte) are present. The notation is written in a cursive, historical style. The paper shows signs of age, including some staining and foxing.



A handwritten musical score on ten staves. The notation includes various note values, rests, and dynamic markings. The first staff begins with a treble clef and a key signature of one flat. The second staff has a dynamic marking of *f*. The third staff has a dynamic marking of *ff*. The fourth staff has a dynamic marking of *pp*. The score is written in a cursive, historical style.



Handwritten musical score on ten staves. The notation includes treble clefs, a key signature of one sharp (F#), and various rhythmic values. The score features complex textures with multiple voices and dense chordal passages. Performance markings include 'f' (forte), 'p' (piano), and 'cresc.' (crescendo). A vocal line with lyrics 'eres = = = = cen = =' is present in the seventh staff. The piece concludes with first and second endings marked '1.' and '2.'



Introduzione No. 1.

