

# **Badische Landesbibliothek Karlsruhe**

**Digitale Sammlung der Badischen Landesbibliothek Karlsruhe**

## **Il Barbiere di Siviglia - Don Mus.Ms. 1683a-h**

**Rossini, Gioachino**

**[S.l.], 1820 (1820c)**

8. Finale. Marziale

[urn:nbn:de:bsz:31-111227](https://nbn-resolving.org/urn:nbn:de:bsz:31-111227)

*Finale*

*No. 8.*

*Marziale*

*ten.*

*ten.*

Handwritten musical notation on a five-line staff, featuring a treble clef and a key signature of one sharp (F#). The notation includes a series of eighth and sixteenth notes with stems pointing upwards.

Handwritten musical notation on a five-line staff, continuing the piece. It includes a dynamic marking of *pp* and a *tr* (trill) symbol above a note.

Handwritten musical notation on a five-line staff, featuring a dynamic marking of *f* and a *tr* symbol above a note. A red annotation *pp* Sottovoce. is written below the staff.

Handwritten musical notation on a five-line staff, continuing the piece with various note values and stems.

Handwritten musical notation on a five-line staff, featuring a dynamic marking of *f* and a *pp* marking below the staff.

Handwritten musical notation on a five-line staff, including a dynamic marking of *f* and a *tr* symbol above a note.

Handwritten musical notation on a five-line staff, featuring a dynamic marking of *f* and a *tr* symbol above a note.

Handwritten musical notation on a five-line staff, including a dynamic marking of *pp* and a *tr* symbol above a note.

Handwritten musical notation on a five-line staff, concluding the piece with a final flourish and a dynamic marking of *f*.

*2.* *atempo*

*Colla parte*

*Von Giuseppe Solton Carlondo* *f.*



*in misse / fu / in van Dolton*



*Colla parte*  
*piu Andante*

*po*

*mf* *po*

*ad. S.*



Handwritten musical score for the first part of the piece, consisting of six staves of music. The notation includes various notes, rests, and ornaments, with some notes beamed together. The music is written in a style characteristic of 18th-century manuscript notation.

*Collaparte*

Handwritten musical staff with lyrics "Und so wie ich bin so" written below it. The staff contains a few notes and rests, with some notes beamed together.

Handwritten musical staff with lyrics "ich will dich nicht" and "Sont zum Tuschel" written below it. The staff contains a few notes and rests, with some notes beamed together.

Handwritten musical staff with notes and rests. The notation includes various notes, rests, and ornaments, with some notes beamed together.

Handwritten musical staff with notes and rests. The notation includes various notes, rests, and ornaments, with some notes beamed together.

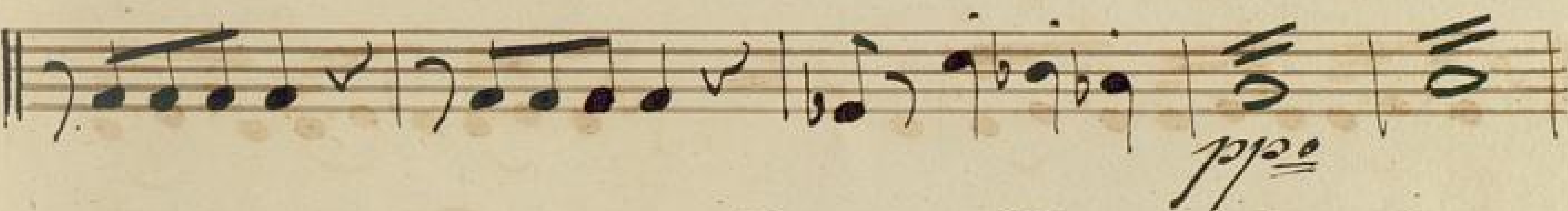
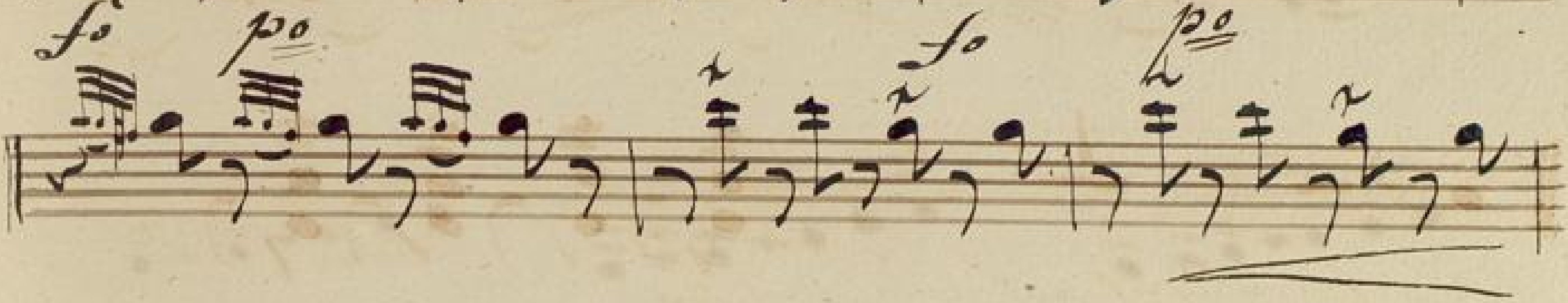
Handwritten musical score on ten staves. The notation includes treble clefs, a key signature of one sharp (F#), and a 3/4 time signature. The music features various rhythmic patterns, including eighth and sixteenth notes, and rests. Dynamic markings include 'ff' (fortissimo) and 'p' (piano). A tempo change is indicated by 'Tempo 1mo' in red ink. The piece concludes with a double bar line and the instruction 'Collaparte.' in red ink.



*1.*  
*Christliche Kirchenorgel*

*1.*

*Christliche Kirchenorgel*



*Andante.*

Handwritten musical notation for the first system, featuring a treble clef and a forte (*f*) dynamic marking. The music consists of a single melodic line with various note values and rests.

Handwritten musical notation for the second system, including a fortissimo (*ff*) dynamic marking and a 'Vivace' tempo change. The notation includes first endings marked with '1.' and a piano (*pp*) dynamic marking.

Handwritten musical notation for the third system, continuing the melodic line with various note values and rests.

Handwritten musical notation for the fourth system, continuing the melodic line with various note values and rests.

Handwritten musical notation for the fifth system, continuing the melodic line with various note values and rests.

Handwritten musical notation for the sixth system, continuing the melodic line with various note values and rests.

Handwritten musical notation for the seventh system, continuing the melodic line with various note values and rests.

Handwritten musical notation for the eighth system, continuing the melodic line with various note values and rests.

*eres = = een = = do* *hymn*

*Mit dem So gefängniß fort you tunen* *fort you*

*tunen* *gefängniß* *gefängniß*

*inf.* *Allo.* *Sinnre Spinnel ff.*

*pp* *f* *ff*

*f*

*Sottovoce.*

A handwritten musical score for the 'Sottovoce' section, consisting of ten staves of music. The notation is in a single system with a treble clef and a common time signature. The music features a melodic line with various intervals, including eighth and sixteenth notes, and rests. There are several dynamic markings, including 'p' (piano) and 'pp' (pianissimo), and some phrasing slurs. The paper shows signs of age with some staining.

*Divisi*

A handwritten musical score for the 'Divisi' section, consisting of two staves of music. The notation is in a single system with a treble clef and a common time signature. The music features a melodic line with various intervals, including eighth and sixteenth notes, and rests. There are several dynamic markings, including 'p' (piano) and 'pp' (pianissimo), and some phrasing slurs. The paper shows signs of age with some staining.



*Cres = = = e e n = = =*



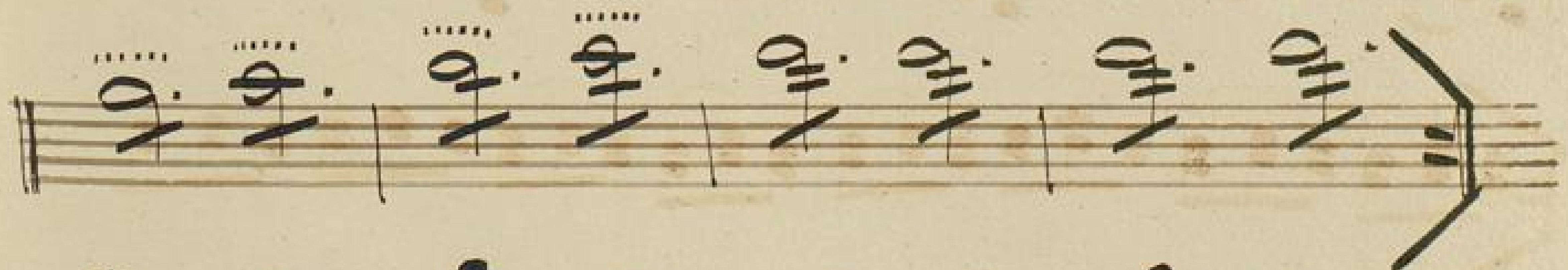
*Do a = = = po e = = =*



*Co = = = = = = = = =*



*a = = = = = po e = = = a*



*L. P.*

Handwritten musical score on six staves. The first staff is a treble clef with sixteenth notes and slurs. The second staff is a bass clef with sixteenth notes and slurs. The third staff is a bass clef with sixteenth notes and slurs. The fourth staff is a bass clef with sixteenth notes and slurs. The fifth staff is a bass clef with sixteenth notes and slurs. The sixth staff is a bass clef with sixteenth notes and slurs.



*Friedrich Gassner A.M.*

