

# **Badische Landesbibliothek Karlsruhe**

**Digitale Sammlung der Badischen Landesbibliothek Karlsruhe**

## **Il Barbiere di Siviglia - Don Mus.Ms. 1683a-h**

**Rossini, Gioachino**

**[S.l.], 1820 (1820c)**

Ouverture. Andante

[urn:nbn:de:bsz:31-111227](https://nbn-resolving.org/urn:nbn:de:bsz:31-111227)

Overture Violino secondo.

Andte *f* *pp*

*rallent.*

Allo.  $\frac{12}{8}$

Musical staff with notes and rests.

Musical staff with notes and rests.

Musical staff with notes and rests.

Musical staff with notes and rests.

Musical staff with notes and rests. *2.*

Musical staff with notes and rests.



This page contains a handwritten musical score consisting of ten staves. The notation is written in a historical style, likely from the 18th or 19th century. The first staff begins with a treble clef, a key signature of one sharp (F#), and a dynamic marking of *f*. The subsequent staves are organized into pairs, with the upper staff of each pair using a treble clef and the lower staff using a bass clef. The music features a variety of rhythmic values, including eighth and sixteenth notes, and rests. There are several instances of slurs and phrasing slurs throughout the score. Dynamic markings include *f* (forte) and *mf* (mezzo-forte). The paper shows signs of age, with some staining and wear along the right edge.

Handwritten musical notation on a single staff, featuring a treble clef, a key signature of one sharp (F#), and a series of eighth and sixteenth notes. A dynamic marking 'p' is visible below the staff.

Handwritten musical notation on a single staff, featuring a treble clef and a series of eighth and sixteenth notes.

Handwritten musical notation on a single staff, featuring a treble clef, a series of eighth and sixteenth notes, and a dynamic marking 'p' below the staff.

Handwritten musical notation on a single staff, featuring a treble clef, a series of eighth and sixteenth notes, and a dynamic marking 'p' below the staff.

Handwritten musical notation on a single staff, featuring a treble clef, a series of eighth and sixteenth notes, and a dynamic marking 'p' below the staff.

Handwritten musical notation on a single staff, featuring a treble clef, a series of eighth and sixteenth notes, and a dynamic marking 'p' below the staff.

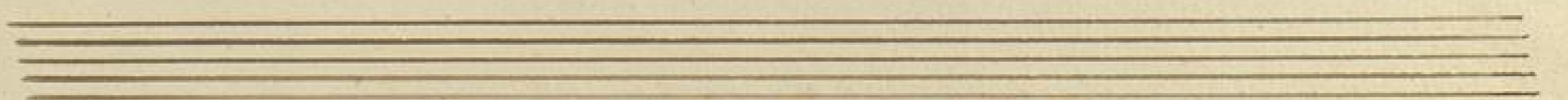
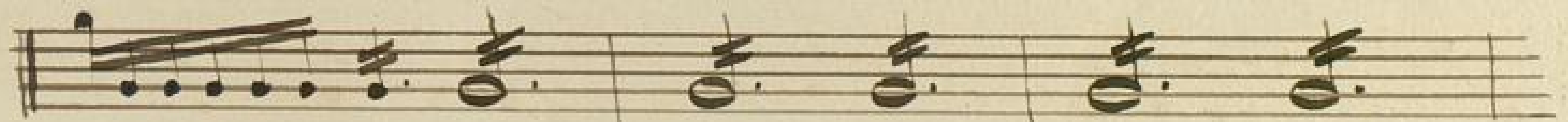
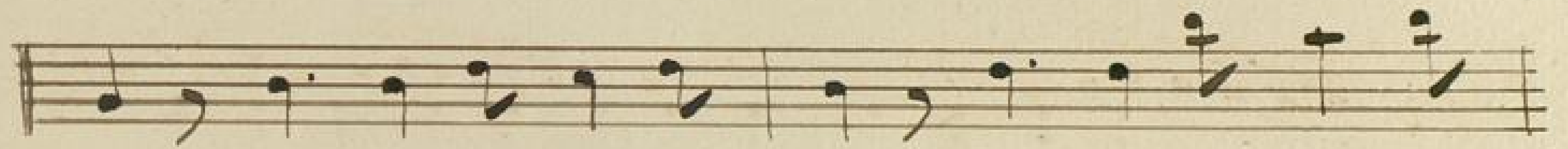
Handwritten musical notation on a single staff, featuring a treble clef, a series of eighth and sixteenth notes, and a dynamic marking 'p' below the staff.

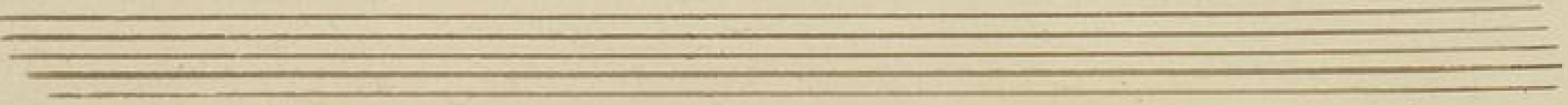
Handwritten musical notation on a single staff, featuring a treble clef, a series of eighth and sixteenth notes, and a dynamic marking 'p' below the staff.

Handwritten musical notation on a single staff, featuring a treble clef, a series of eighth and sixteenth notes, and a dynamic marking 'p' below the staff.

Empty musical staves at the bottom of the page.

Handwritten musical score on ten staves. The first staff has a treble clef, a key signature of one sharp (F#), and a time signature of 3/8. It begins with a dynamic marking 'ff' and contains a melodic line with slurs and ties. The subsequent staves continue the melodic and harmonic development, with various rhythmic patterns and dynamic markings like 'ff' and 'f'. The notation includes eighth and sixteenth notes, rests, and slurs. The paper shows signs of age and wear.





*Attaca.*