

Badische Landesbibliothek Karlsruhe

Digitale Sammlung der Badischen Landesbibliothek Karlsruhe

Il Barbiere di Siviglia - Don Mus.Ms. 1683a-h

Rossini, Gioachino

[S.l.], 1820 (1820c)

Ouverture. Andante

[urn:nbn:de:bsz:31-111227](https://nbn-resolving.org/urn:nbn:de:bsz:31-111227)

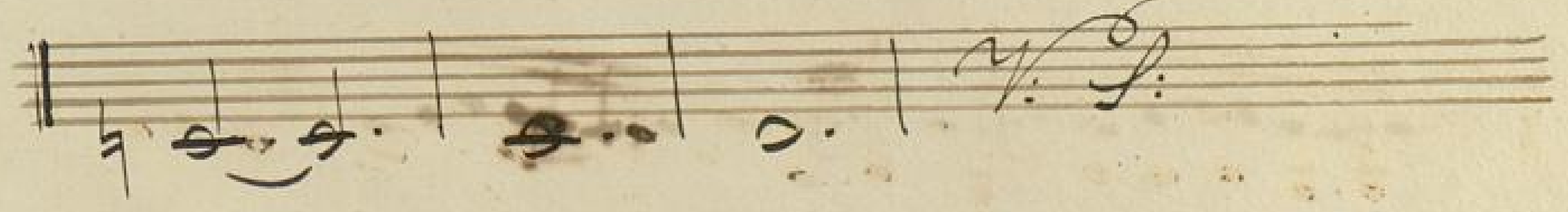
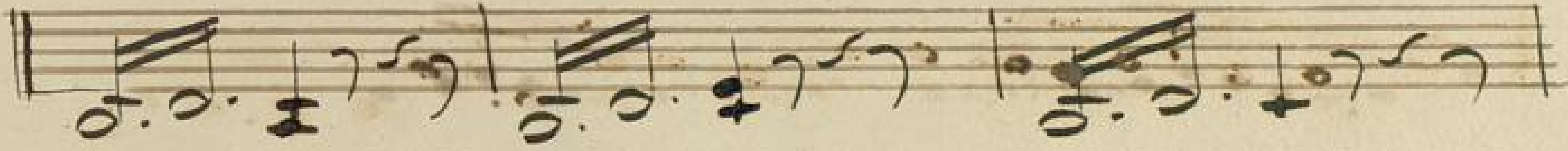
Ouverture Violino Solo

Andte

rallent. ^{po} Alleg.

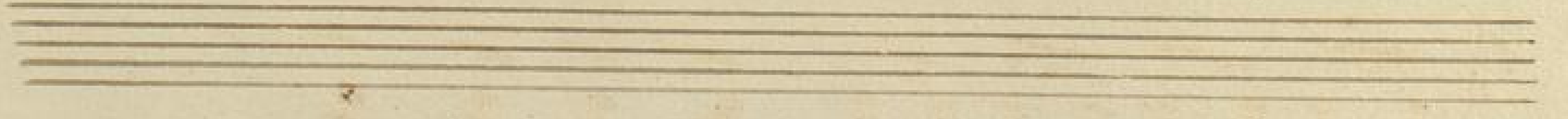
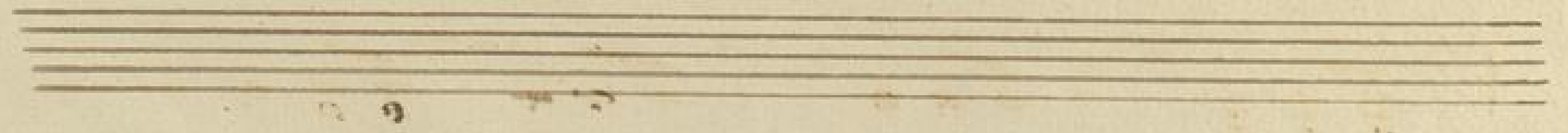
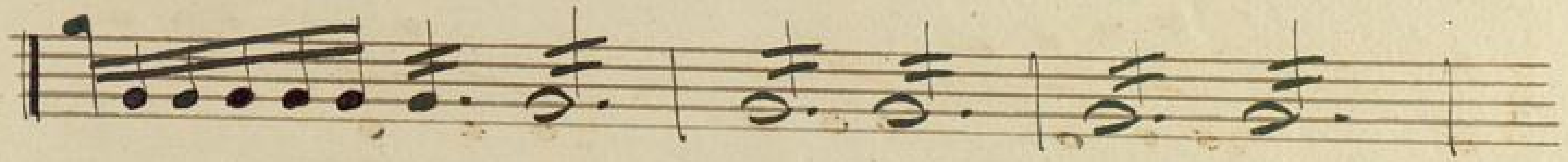
1.

2.



A page of handwritten musical notation on ten staves. The music is written in a treble clef with a key signature of one sharp (F#). The notation includes various note values, rests, and ornaments. The first staff begins with a treble clef and a sharp sign. The music is written in a cursive, handwritten style. There are several measures of music on each staff, with some measures containing multiple notes beamed together. The paper shows signs of age, including some staining and discoloration.

A handwritten musical score consisting of ten staves. The notation is in a cursive style, typical of 18th or 19th-century manuscripts. The first staff begins with a treble clef and a key signature of one sharp (F#). The music features a variety of note values, including eighth and sixteenth notes, often beamed together in groups. There are several slurs and accents throughout the piece. The word "Dii" is written in the first staff, and "fo" appears in the fifth staff. The notation is dense and fills most of the staves. The paper shows signs of age, with some staining and discoloration.



Handwritten musical score on eight staves. The notation includes various note values, rests, and dynamic markings such as 'f' and 'ff'. The music is written in a cursive style typical of 18th or 19th-century manuscripts. The first staff begins with a treble clef and a key signature of one sharp (F#). The piece concludes with a double bar line and a decorative flourish on the eighth staff.



Attaca.