

# **Badische Landesbibliothek Karlsruhe**

**Digitale Sammlung der Badischen Landesbibliothek Karlsruhe**

## **Il Barbiere di Siviglia - Don Mus.Ms. 1683a-h**

**Rossini, Gioachino**

**[S.l.], 1820 (1820c)**

8. Finale. Marziale

[urn:nbn:de:bsz:31-111227](https://nbn-resolving.org/urn:nbn:de:bsz:31-111227)

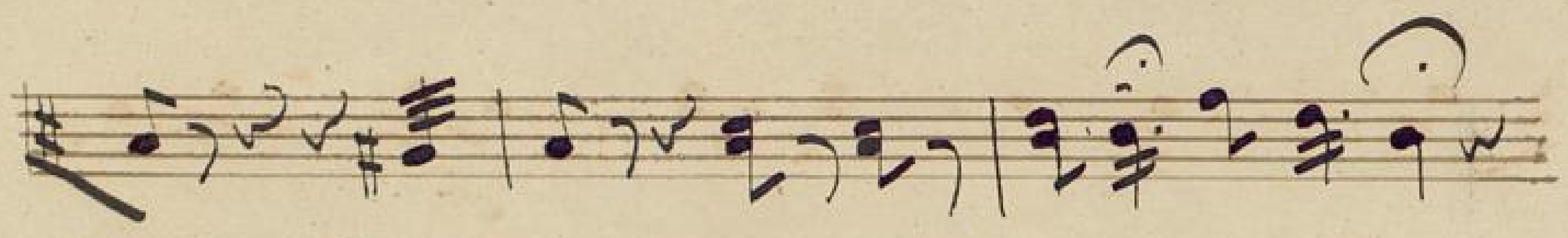
Finale.

59  
167

No 8.

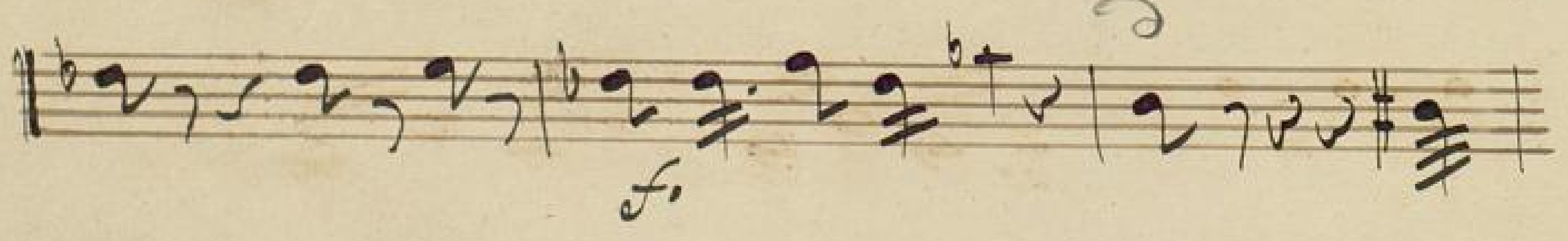
*marziale*

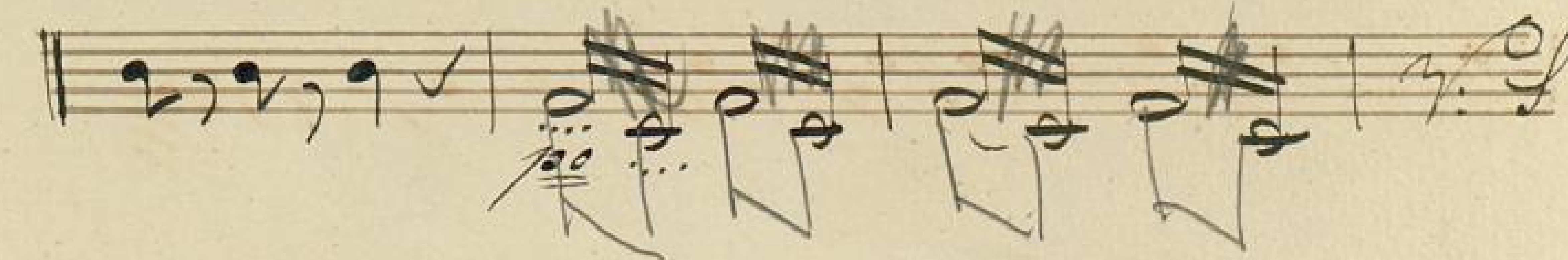
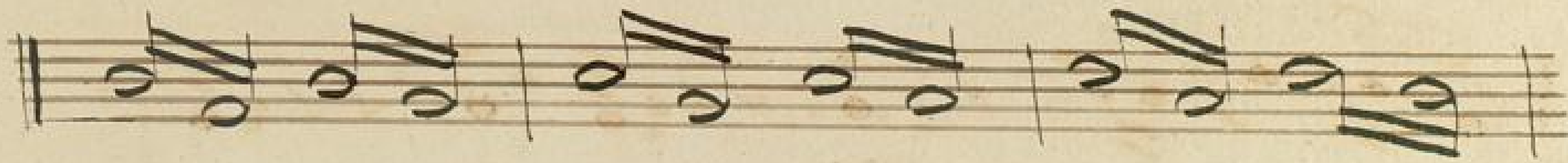
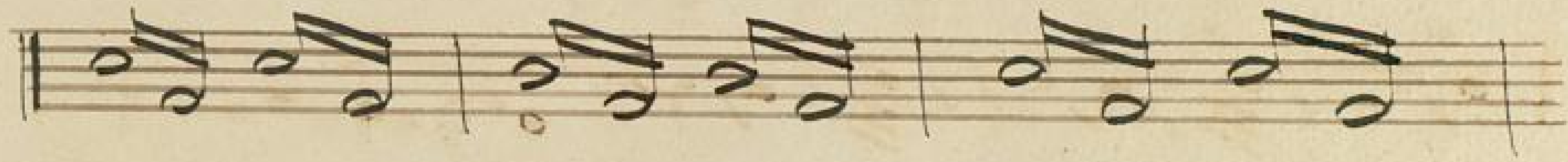
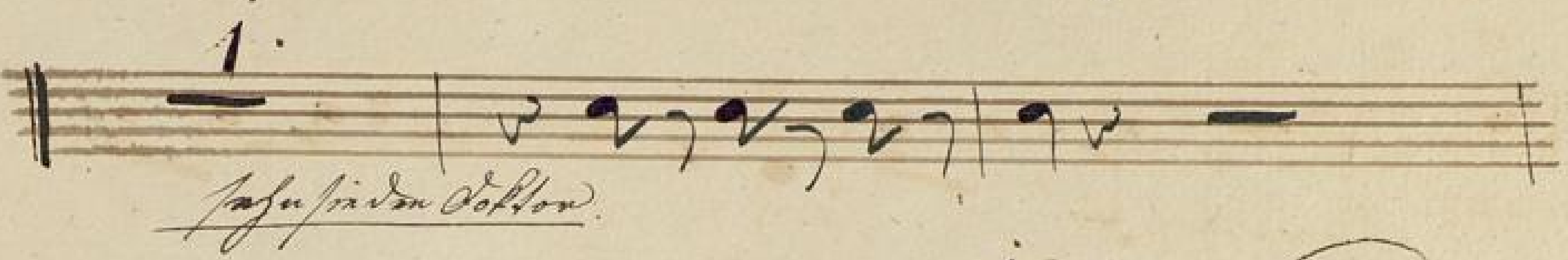
F. Sch.



2. *al tempo.*

*Colla parte* *Sarabanda* *fo*





A handwritten musical score on ten staves. The notation includes various note values (quarter, eighth, sixteenth notes), rests, and accidentals (sharps). The score is organized into systems of two staves each. The first system (staves 1-2) begins with a treble clef and a key signature of one sharp (F#). The second system (staves 3-4) includes a dynamic marking of *pp* (pianissimo) at the start of the first staff. The third system (staves 5-6) features a crescendo hairpin. The fourth system (staves 7-8) includes a first ending bracket labeled '1.' and a dynamic marking of *pp*. The fifth system (staves 9-10) continues the melodic line. The handwriting is clear and professional, typical of a composer's manuscript.

*Colla parte*

*fin fu*

*Nun sind ich*

*fontaine d'aufer*

The first system of the manuscript features a vocal line on a single staff with a treble clef and a key signature of one flat. The melody consists of eighth and quarter notes. Below the vocal line are two staves for piano accompaniment. The first piano staff has a treble clef and contains a bass line with dotted rhythms and rests. The second piano staff has a bass clef and contains a bass line with eighth notes and rests. The system concludes with a first ending bracket over a whole note rest.

*Tempo primo*

*pp*

*ff*

*pp*

*ff*

The second system consists of four staves of piano accompaniment. The first staff has a treble clef and contains a bass line with dotted rhythms and rests, marked with a piano (*pp*) dynamic. The second staff has a treble clef and contains a melody with eighth notes and rests, marked with a forte (*ff*) dynamic. The third staff has a treble clef and contains a bass line with eighth notes and rests, marked with a piano (*pp*) dynamic. The fourth staff has a bass clef and contains a bass line with eighth notes and rests, marked with a forte (*ff*) dynamic. The system concludes with a first ending bracket over a whole note rest.

*Colla parte*

*ff*

The third system consists of two staves of piano accompaniment. The first staff has a treble clef and contains a bass line with a whole note rest, marked with a forte (*ff*) dynamic. The second staff has a bass clef and contains a bass line with a whole note rest, marked with a forte (*ff*) dynamic.

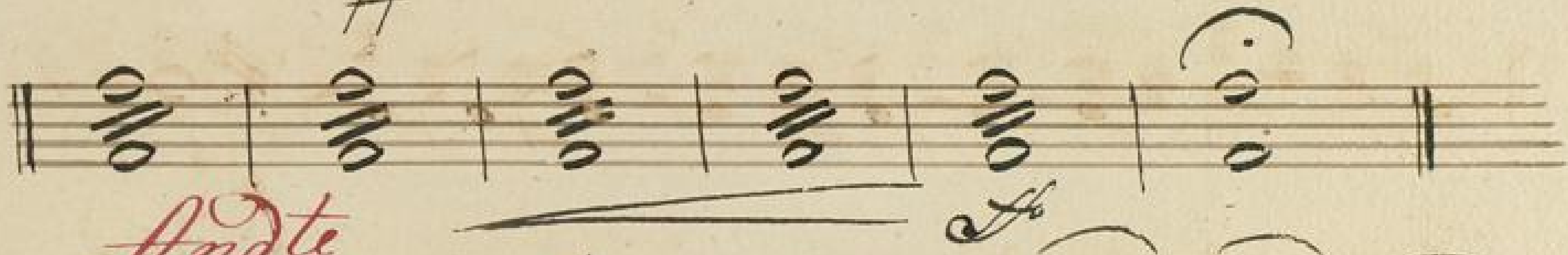
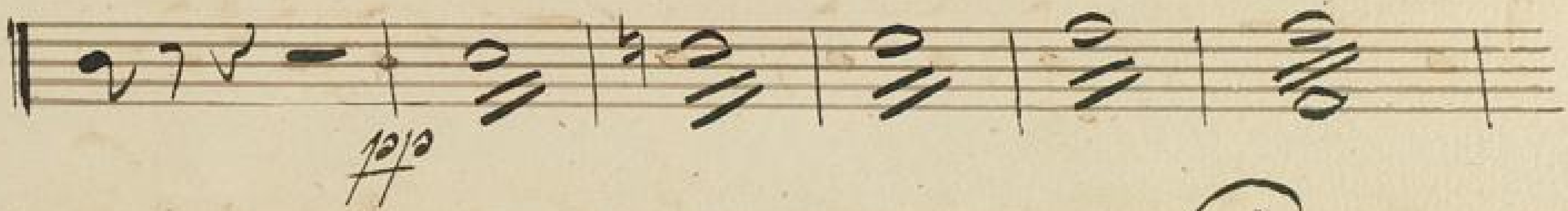
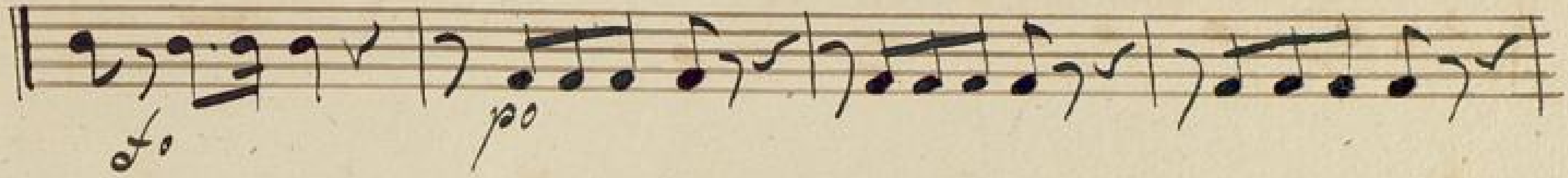
1.  
 Soll sein Haupt von Laub *pp*

*pp*

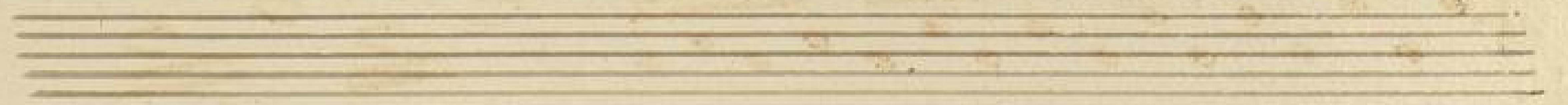
*pp*

*vis*

*pp*

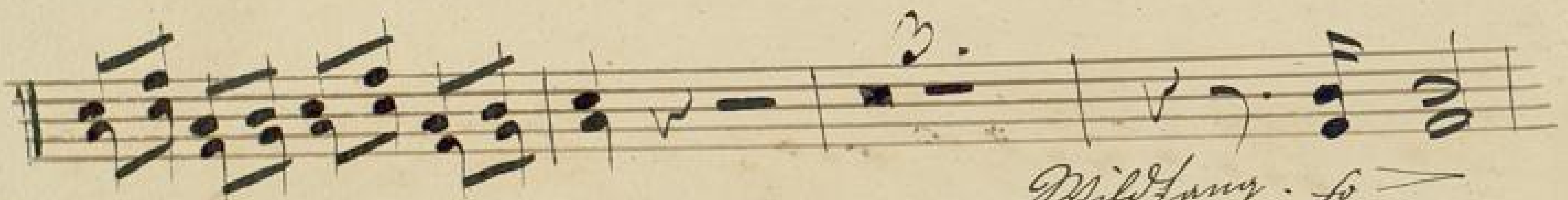


*Andte*





*Vivace*



*Mildfang. so*



*Allo.*

*f*



Handwritten musical score on ten staves. The notation includes various note values, rests, and dynamic markings. A red 'Sotto voce' marking is present on the third staff, and a black 'f' marking is on the second staff. The score concludes with a double bar line and a 'Fine' marking.

A handwritten musical score consisting of ten staves. The notation is in a cursive style, typical of 18th or 19th-century manuscripts. The first staff begins with a treble clef and a key signature of one sharp (F#). The music features a variety of note values, including eighth and sixteenth notes, and rests. There are several dynamic markings: 'f' (forte) appears on the fourth staff, and 'p' (piano) appears on the eighth staff. The piece concludes with a double bar line and a decorative flourish on the final staff.