

Badische Landesbibliothek Karlsruhe

Digitale Sammlung der Badischen Landesbibliothek Karlsruhe

Il Barbiere di Siviglia - Don Mus.Ms. 1683a-h

Rossini, Gioachino

[S.l.], 1820 (1820c)

Akt I

[urn:nbn:de:bsz:31-111227](https://nbn-resolving.org/urn:nbn:de:bsz:31-111227)

Ouverture Oboe Solo

Andte *f* *Allo*

p

2.
 Musical staff with notes and a dynamic marking *so*.

8.
 Musical staff with notes and a repeat sign.

7.
 Musical staff with notes and a repeat sign.

Musical staff with notes.

10.
 Musical staff with notes and a repeat sign.

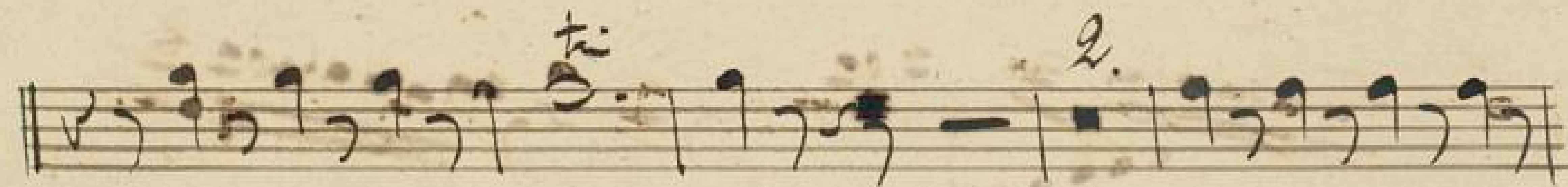
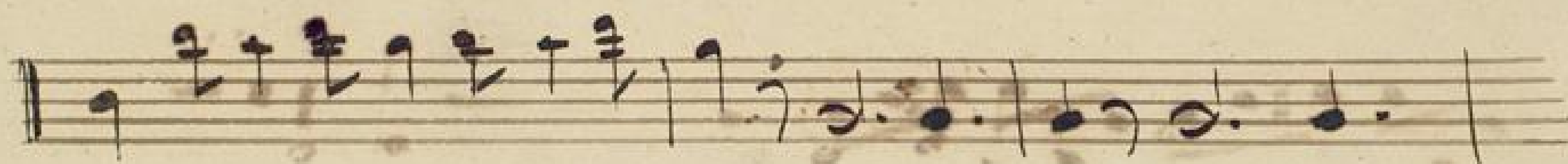
Musical staff with notes and a repeat sign.

Musical staff with notes and a repeat sign.

9.
 Musical staff with notes and a repeat sign.

Musical staff with notes and a repeat sign.

7.
 Musical staff with notes and a repeat sign.



No. 1. 2. 3. 4. 5. 6. Tacet

No. 7. Tacet

Finale. No. 8.

marziale

2. *mf*

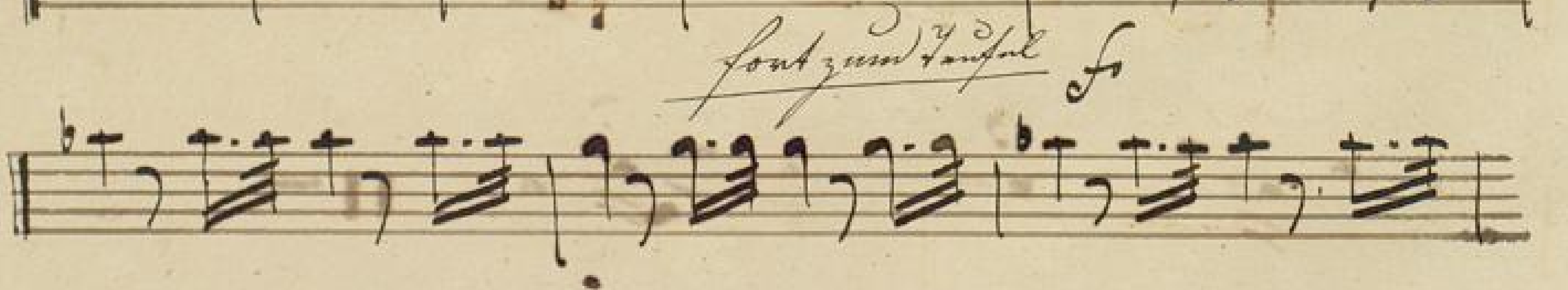
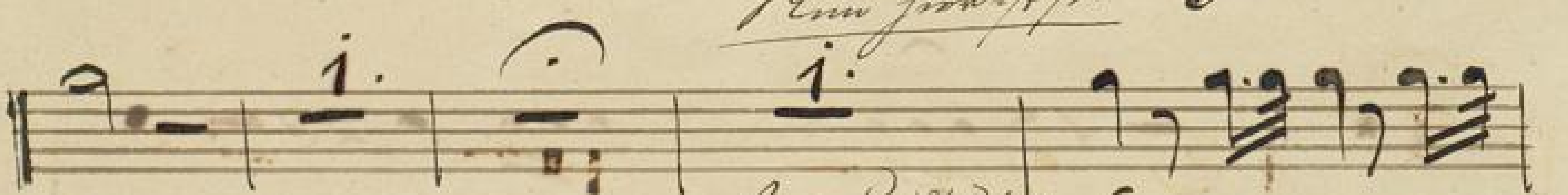
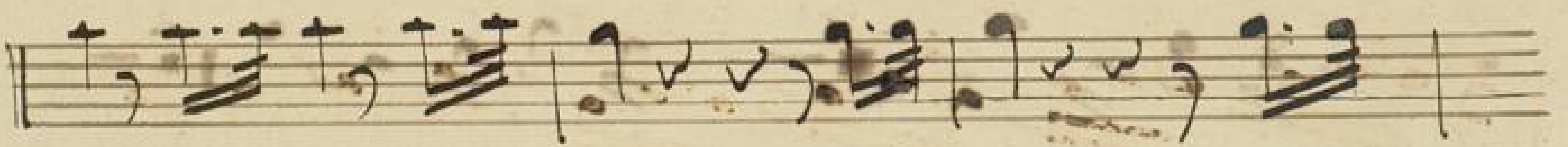
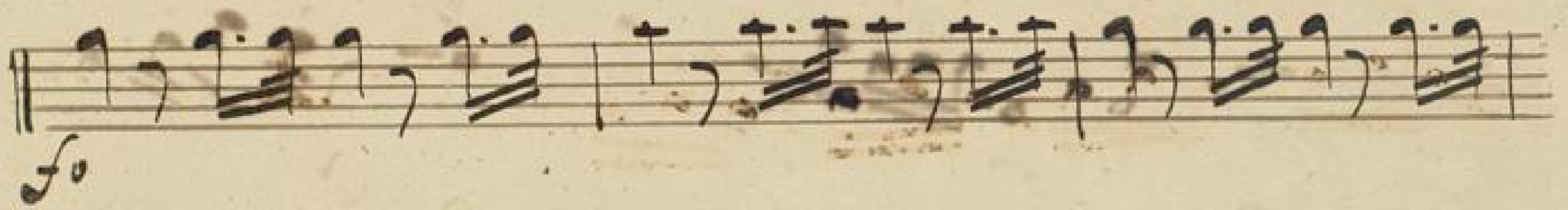
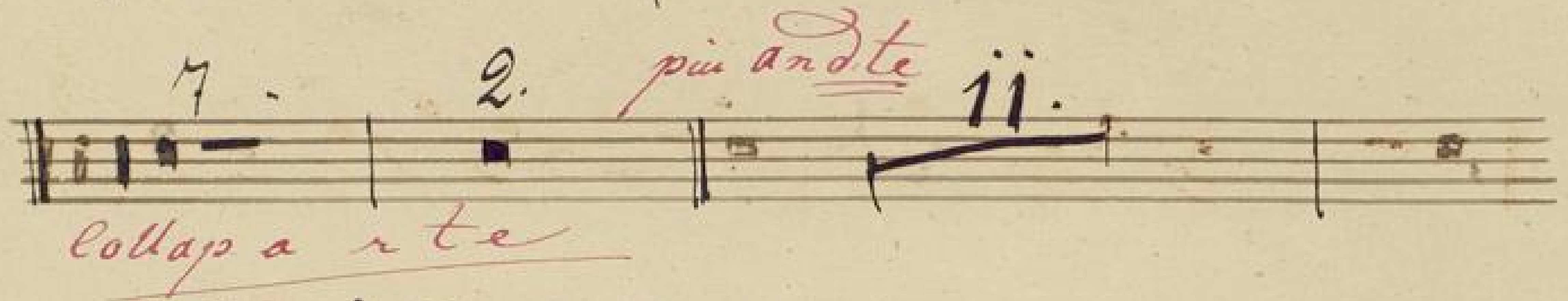
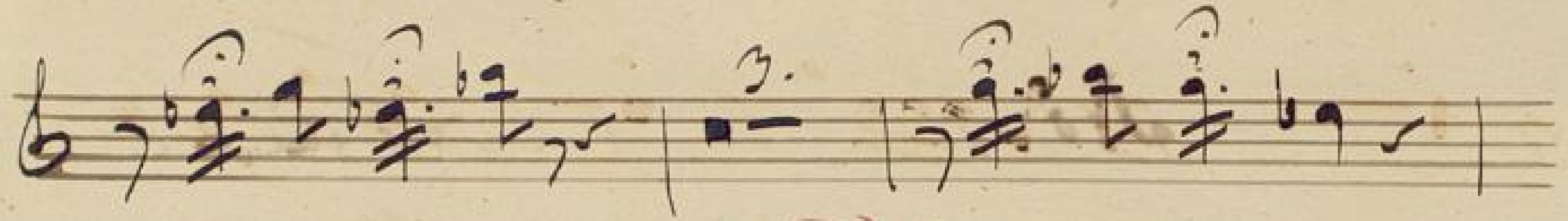
3. *f*

3. *Colla parte*

6. *atempo*

3. 9.

3. *f.*



5.

3. 2. 8.

f

6. 15.

1.

17.

Andte

Vivace 35.

andte

Allo.

Handwritten musical score on ten staves. The notation includes treble clef, common time signature, and various musical symbols such as notes, rests, and dynamic markings like 'f', 'p', and 'pp'. The paper shows signs of age with some staining.



Handwritten musical notation on five staves. The first staff begins with a treble clef and a '1.' above the first note. The notation includes various note values, rests, and bar lines. The fifth staff ends with a treble clef.

A single staff of musical notation with faint notes and a key signature change.

Curia sub festo in Alt.

zweiter alt.

No 9. 11. 12. 13. 14. Facet.

A single empty staff of musical notation.