

Badische Landesbibliothek Karlsruhe

Digitale Sammlung der Badischen Landesbibliothek Karlsruhe

Il Barbiere di Siviglia - Don Mus.Ms. 1683a-h

Rossini, Gioachino

[S.l.], 1820 (1820c)

1. Introduzione. moderato

[urn:nbn:de:bsz:31-111227](https://nbn-resolving.org/urn:nbn:de:bsz:31-111227)

Introduzione

No 1. in G.

modto $\frac{3}{4}$ 8.

3.

Solo

3.

1. 42.

3. 1.

Guittarre accord.

Largo in C.

$\frac{2}{4}$ 2.

3.

10. 5.

Allo.

26. *Vivace.* 16. ~~vio~~

~~Handwritten musical notation, heavily crossed out with red ink.~~

de
Handwritten musical notation with notes and stems.

Handwritten musical notation with notes and stems. *es =* and *en =* are written below the staff.

Handwritten musical notation with notes and stems. *do* is written below the staff.

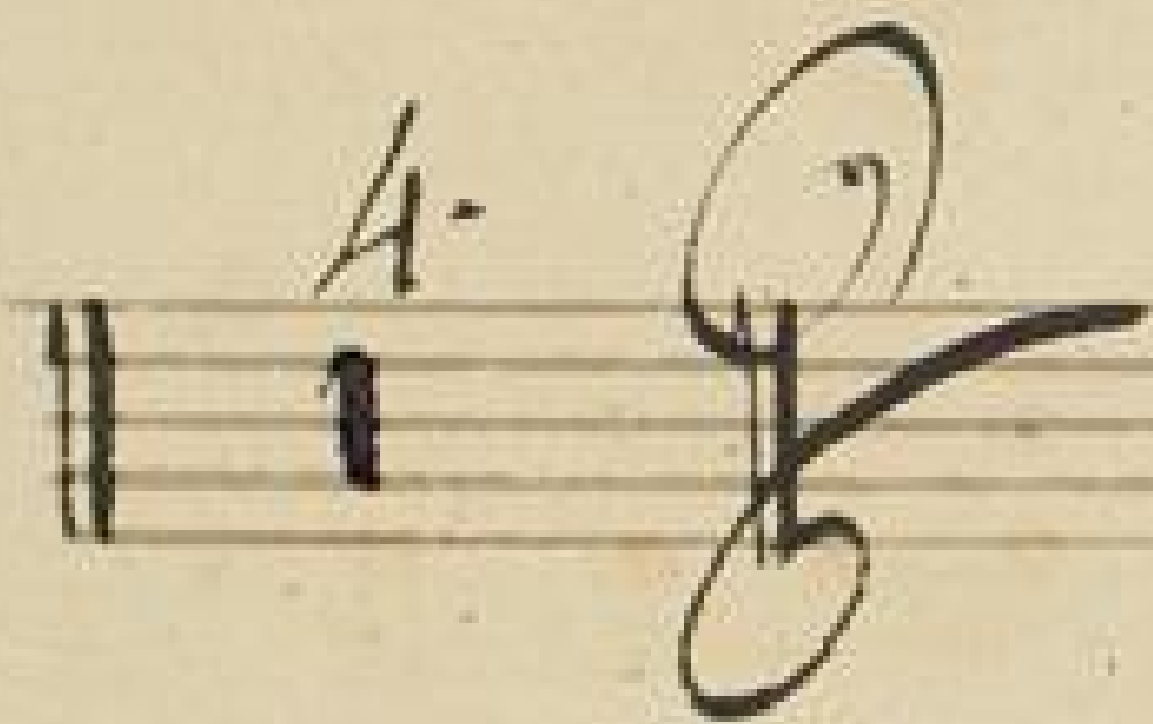
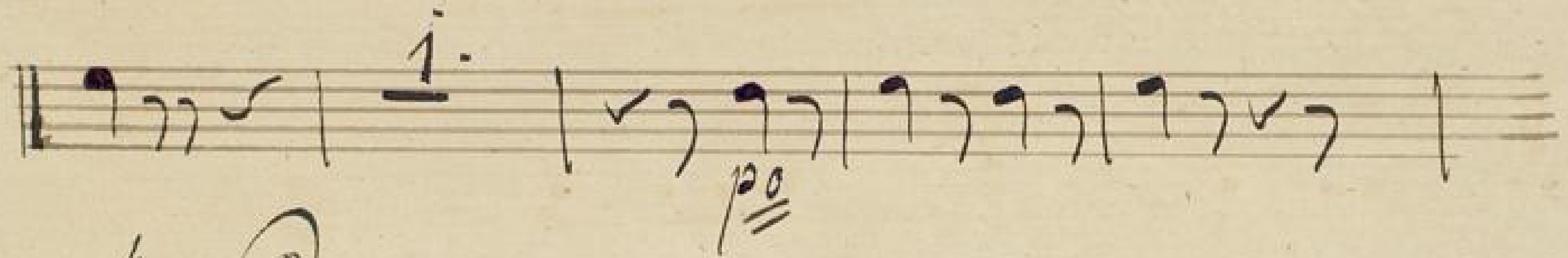
Handwritten musical notation with notes and stems.

Handwritten musical notation with notes and stems. *vio#* is written above the staff.

~~Handwritten musical notation, heavily crossed out with red ink.~~

~~Handwritten musical notation, heavily crossed out with red ink.~~

Handwritten musical notation with notes and stems. *3/4* is written at the end of the staff.



Sigue No 2.