

Badische Landesbibliothek Karlsruhe

Digitale Sammlung der Badischen Landesbibliothek Karlsruhe

Il Barbiere di Siviglia - Don Mus.Ms. 1683a-h

Rossini, Gioachino

[S.l.], 1820 (1820c)

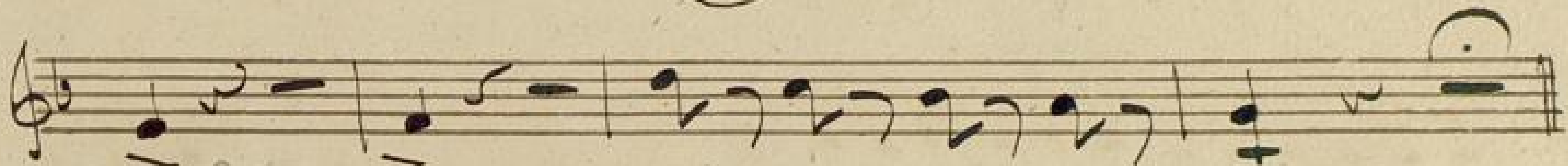
Violine I

[urn:nbn:de:bsz:31-111227](https://nbn-resolving.org/urn:nbn:de:bsz:31-111227)

Presto

Violino Primo

maestoso  *f* *Minuto*



piu
Allo piu mosso.

f 



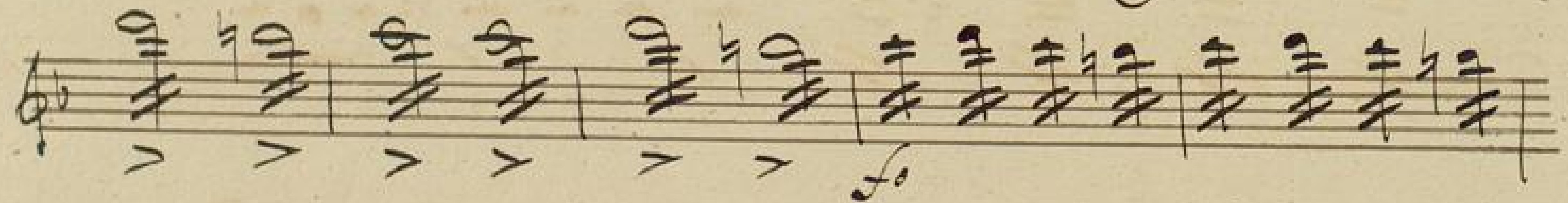
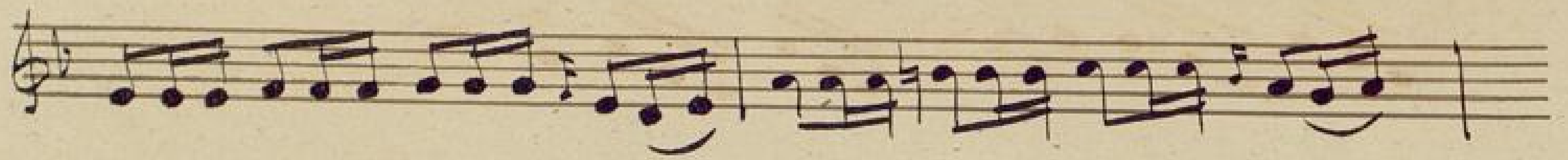








 *f*

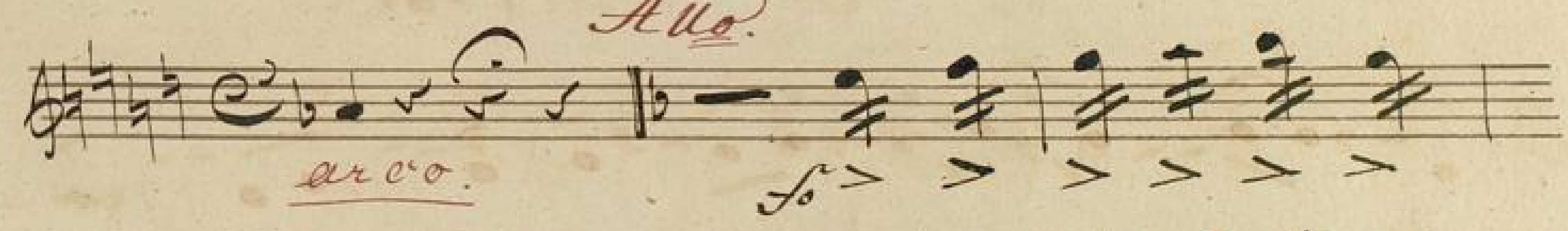




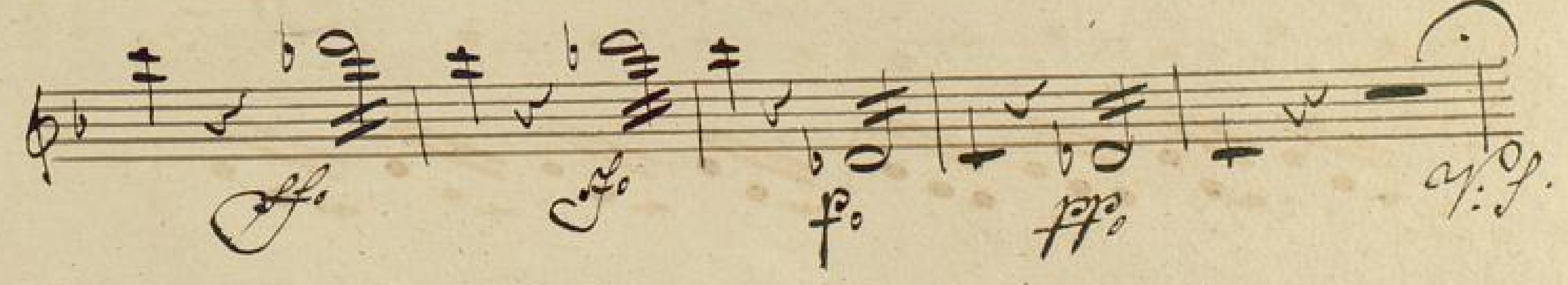
pizz.



And.



arco.



ff

ff

f

ff

fz.

Handwritten musical notation on a single staff, starting with a treble clef and a key signature of one flat. The first measure contains a whole rest. The notation includes various rhythmic values and a dynamic marking of *po* (piano) in the first measure.

Handwritten musical notation on a single staff, starting with a treble clef. It features a dynamic marking of *fo* (forte) in the first measure, followed by a *pizz.* (pizzicato) marking in the second measure.

Handwritten musical notation on a single staff, starting with a treble clef. It includes a *arco. fo* (arco forte) marking in the first measure and a *pizz.* marking in the second measure. The word *Colla voce* is written in red ink above the staff.

Handwritten musical notation on a single staff, starting with a treble clef. It features a *arco.* (arco) marking in the second measure.

Handwritten musical notation on a single staff, starting with a treble clef. It includes a *pizz.* marking in the first measure and an *arco fo* marking in the final measure.

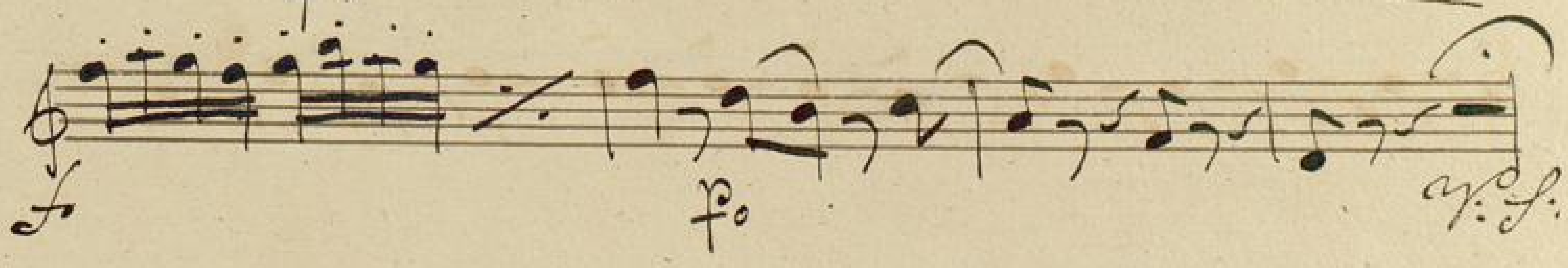
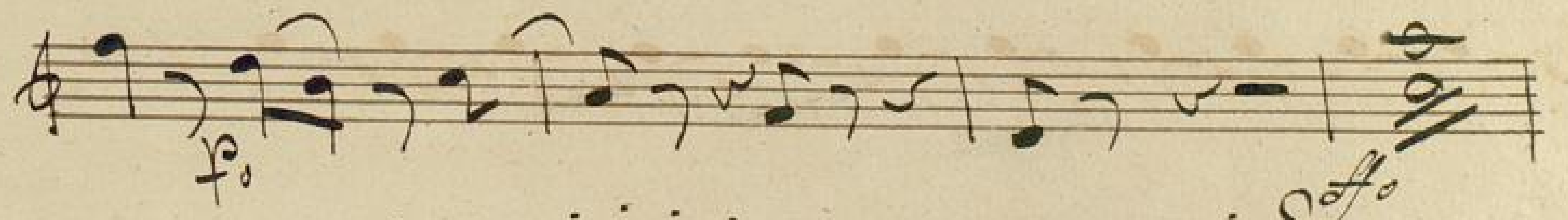
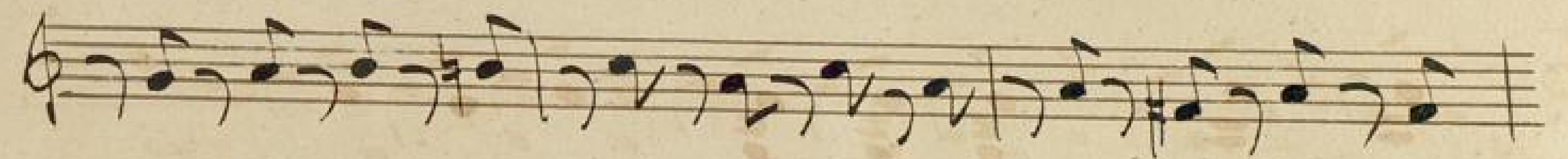
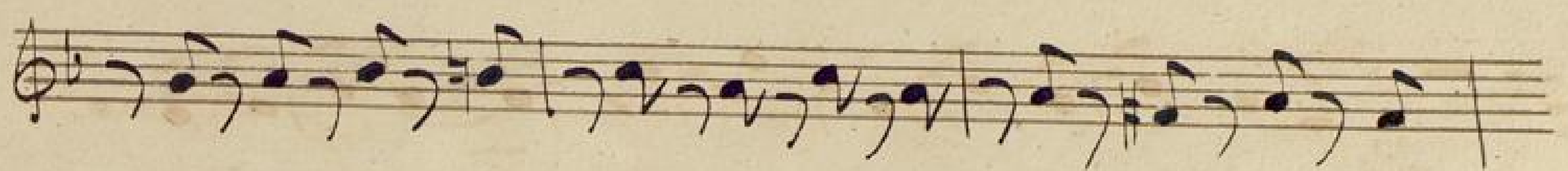
Handwritten musical notation on a single staff, starting with a treble clef. It features a *co* (colla) marking in the second measure and a *Colla voce* marking in the third measure.

Handwritten musical notation on a single staff, starting with a treble clef. It includes an *arco.* marking in the second measure and a *pizz.* marking in the final measure.

Handwritten musical notation on a single staff, starting with a treble clef. The notation consists of a series of rhythmic patterns, possibly representing a specific instrument or vocal line.

Handwritten musical notation on a single staff, starting with a treble clef. The notation consists of a series of rhythmic patterns, similar to the previous staff.

Handwritten musical notation on a single staff, starting with a treble clef. The notation consists of a series of rhythmic patterns, similar to the previous staves.



Handwritten musical score on five staves. The first staff begins with a treble clef, a key signature of one sharp (F#), and a dynamic marking of 'f'. It contains a series of chords, each marked with a 'V' and a diagonal slash. The second staff continues with similar chords, some marked with 'f'. The third staff starts with a treble clef and a dynamic marking of 'f', followed by a melodic line of eighth notes. The fourth and fifth staves continue this melodic line. The fifth staff ends with a double bar line and a fermata over the final note.

Six empty musical staves, each consisting of five horizontal lines, arranged vertically.

