

Badische Landesbibliothek Karlsruhe

Digitale Sammlung der Badischen Landesbibliothek Karlsruhe

Commentarius in materiam de sacramentis novae legis - Cod. Ettenheim-Münster 185

[S.l.], um 1610

Leere Seiten

[urn:nbn:de:bsz:31-115961](https://nbn-resolving.org/urn:nbn:de:bsz:31-115961)

Dei gratia

Handwritten text in a single column, likely a Latin document or manuscript page. The text is dense and appears to be a formal or legal document.

Handwritten text in a single column, continuing from the previous section. The script is consistent with the rest of the page.

[Faint, illegible handwritten text in a cursive script, likely a historical document or manuscript.]

The page contains several paragraphs of handwritten text in a cursive script, likely from the 18th or 19th century. The ink is dark and the paper shows signs of age, including some staining and discoloration. The text is arranged in approximately 15-20 lines per paragraph, with some lines being indented. The handwriting is dense and difficult to decipher without specialized knowledge of the script.

[Faint, illegible handwritten text in a cursive script, likely a historical document or manuscript.]

[Faint handwritten text, likely bleed-through from the reverse side]

[Faint handwritten text, likely bleed-through from the reverse side]

[Faint, illegible handwritten text, likely bleed-through from the reverse side of the page.]

[Faint, mostly illegible handwritten text in a cursive script, likely a historical document or manuscript.]

[Faint, illegible handwritten text, likely bleed-through from the reverse side of the page.]

Handwritten text in a cursive script, likely Latin, covering the majority of the page.

[Faint, illegible handwritten text in a cursive script, likely a historical document or manuscript.]



[Faint, illegible handwritten text in a cursive script, likely a historical document or manuscript.]

[Faint, illegible handwritten text, likely bleed-through from the reverse side of the page.]

[Faint, illegible handwritten text in a cursive script, likely a historical document or manuscript.]

CLASSIS IV

De ...

Handwritten Latin text in a cursive script, consisting of several paragraphs. The text is dense and covers most of the page area.



Handwritten text in a historical script, likely Latin or German, covering the majority of the page. The text is arranged in several paragraphs, with some lines appearing to be part of a list or numbered entries. The handwriting is dense and characteristic of early modern manuscripts.



de consuetudine... de... de...

quod... quod... quod... quod...

quod... quod... quod...

de... de... de... de...

quod... quod... quod...

de... de... de... de...

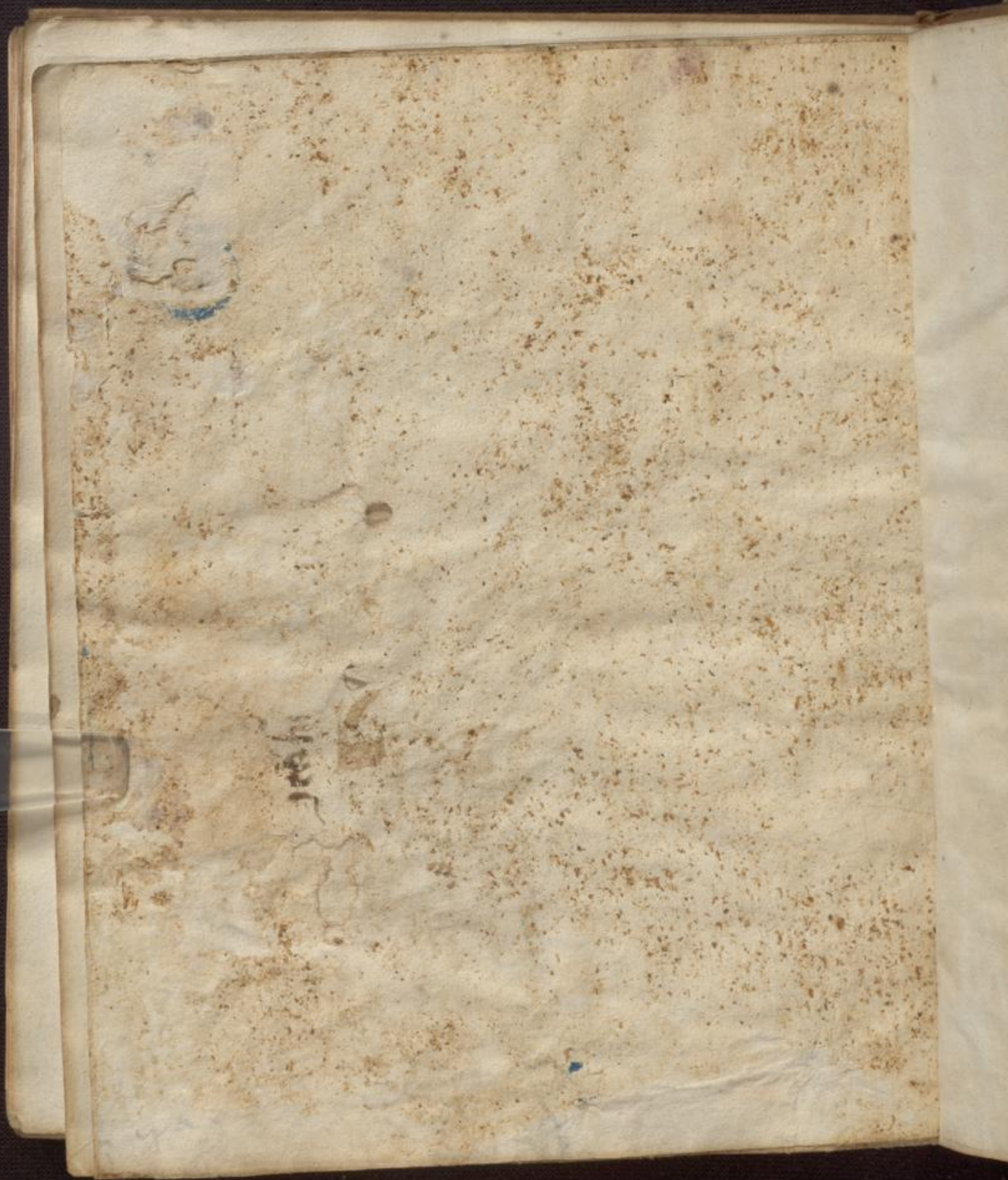
Handwritten text in a cursive script, likely a historical document or manuscript. The text is dense and covers most of the page.

Handwritten text in a cursive script, likely a historical document or manuscript. The text is dense and covers most of the page.



domine sic. it. surage

111



200

