

Badische Landesbibliothek Karlsruhe

Digitale Sammlung der Badischen Landesbibliothek Karlsruhe

Vespers - Don Mus.Ms. 1955

Hueber, ...

[S.l.], 1768 (1768)

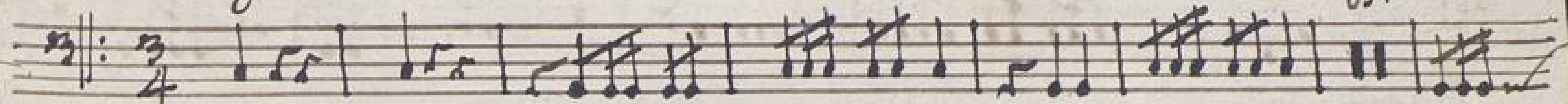
Pauke in C

[urn:nbn:de:bsz:31-116258](https://nbn-resolving.org/urn:nbn:de:bsz:31-116258)

allegro. t. *Tympano.* Esc C.

An 1955
D.

1



Domine



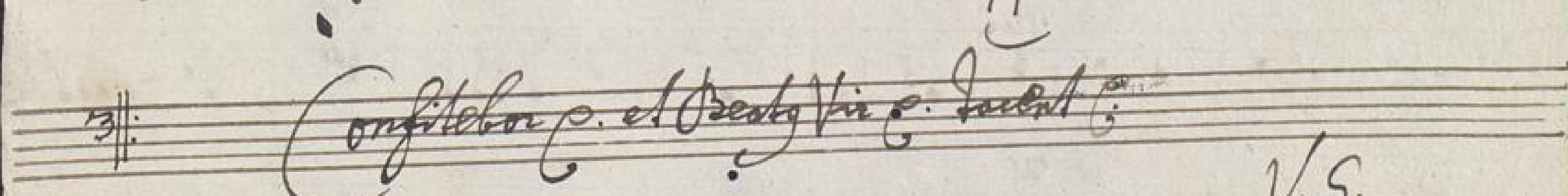
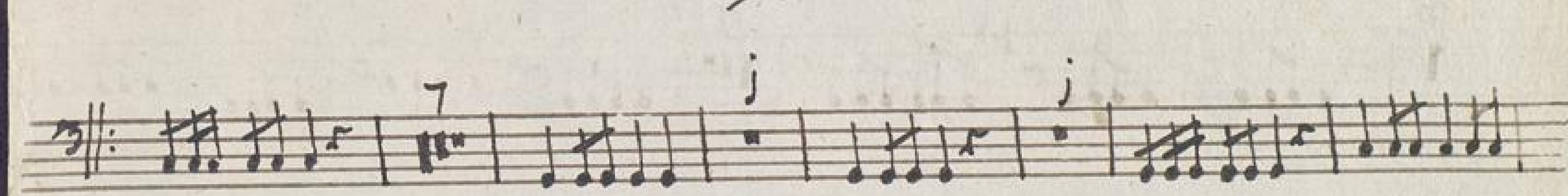
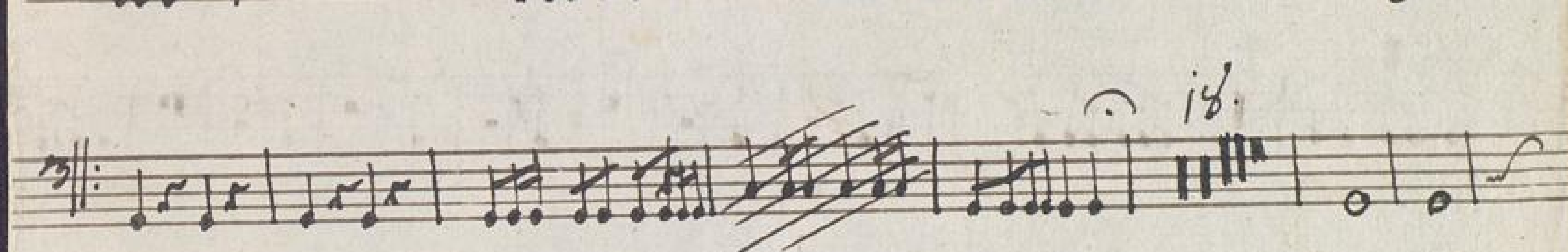
Adagio.

33.



allegro.

Disuit Domine



Confitebor p. et Orchestra p. Sicut

V.S.

allegro.

Musical staff with treble clef, key signature of one flat, and common time signature. It contains a series of eighth and sixteenth notes with various articulations and slurs.

Laudate pueri.

Musical staff with treble clef, key signature of one flat, and common time signature. It features a sequence of notes with some rests and dynamic markings.

Musical staff with treble clef, key signature of one flat, and common time signature. It continues the melodic line with eighth notes and slurs.

Musical staff with treble clef, key signature of one flat, and common time signature. It shows a continuation of the rhythmic pattern with eighth notes.

Andagio.

Musical staff with treble clef, key signature of one flat, and common time signature. The tempo is slower, indicated by the 'Andagio' marking.

Magnificat.

presto.

Musical staff with treble clef, key signature of one flat, and common time signature. It begins with a double bar line and a key signature change to two flats.

Adscultavit.

Musical staff with treble clef, key signature of two flats, and common time signature. It contains a series of notes with some rests and slurs.

Musical staff with treble clef, key signature of two flats, and common time signature. It continues the melodic development.

Musical staff with treble clef, key signature of two flats, and common time signature. It features a sequence of notes with slurs and articulations.

Musical staff with treble clef, key signature of two flats, and common time signature. It shows a continuation of the rhythmic pattern.

Musical staff with treble clef, key signature of two flats, and common time signature. It contains a series of notes with some rests and slurs.

Musical staff with treble clef, key signature of two flats, and common time signature. It continues the melodic line.

Musical staff with treble clef, key signature of two flats, and common time signature. It concludes the piece with a final cadence and a double bar line.