

Badische Landesbibliothek Karlsruhe

Digitale Sammlung der Badischen Landesbibliothek Karlsruhe

Masses - Don Mus.Ms. 1970a,b

Vogler, Georg Joseph

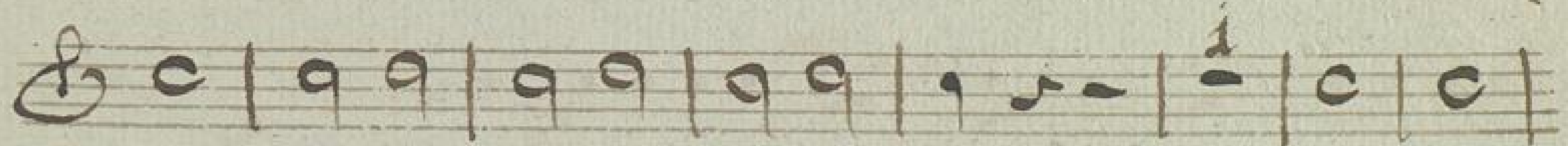
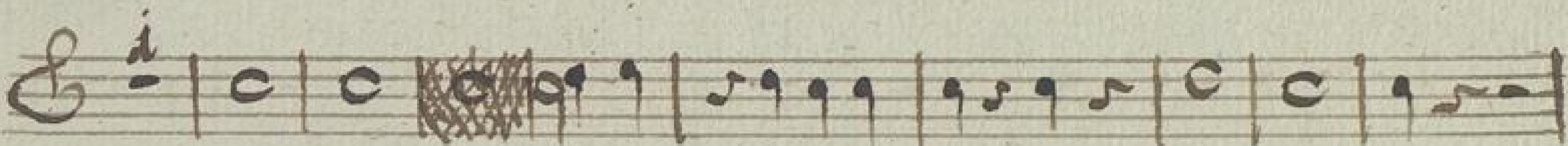
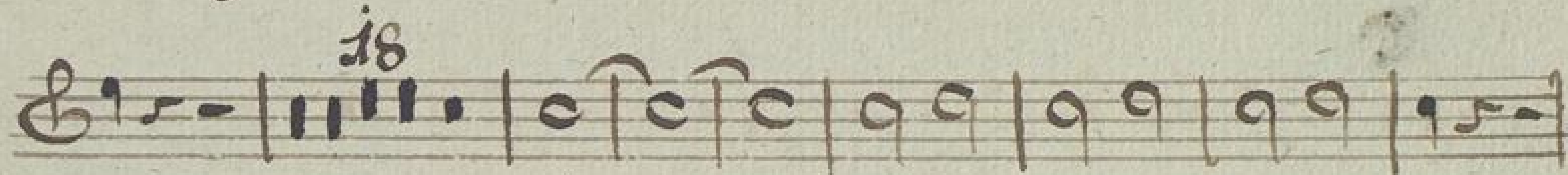
[S.l.], 1800 (1800c)

Horn I in A

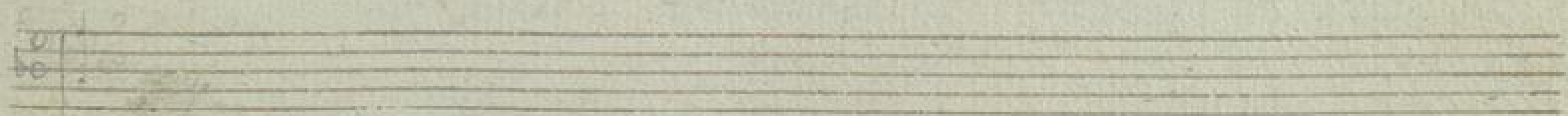
[urn:nbn:de:bsz:31-116780](https://nbn-resolving.org/urn:nbn:de:bsz:31-116780)

Gloria *Toni A.* *Corno Primo*
Kyrie Tacet

Ms 1940a ¹



V. S.



Qui Tollis Tacet

Quoniam

Allegro

Handwritten musical score for 'Qui Tollis Tacet'. The score is written on ten staves. The first staff begins with the tempo marking 'Allegro' and a common time signature 'C'. The music is in G major, indicated by one sharp (F#). The score includes various rhythmic values such as eighth, sixteenth, and thirty-second notes, as well as rests. There are several measures with repeat signs (double bar lines with dots). Measure numbers 7, 9, 6, 4, 20, and 93 are written above or below the staves. The piece concludes with a double bar line and a fermata on the final note.

Credo. Offertorium Tacet:

Sanctus Toni A.
Larghetto

Handwritten musical notation on a five-line staff, featuring a treble clef, a common time signature (C), and a 6/8 time signature. The notation includes a whole note followed by several half notes.

Handwritten musical notation on a five-line staff, featuring a treble clef and a common time signature (C). The notation includes a series of eighth notes and a 9/8 time signature.

Handwritten musical notation on a five-line staff, featuring a treble clef and a common time signature (C). The notation includes a series of eighth notes and a 12/8 time signature.

Handwritten musical notation on a five-line staff, featuring a treble clef and a common time signature (C). The notation includes a series of eighth notes and a 4/8 time signature.

Handwritten musical notation on a five-line staff, featuring a treble clef and a common time signature (C). The notation includes a series of eighth notes and a 1/8 time signature.

Handwritten musical notation on a five-line staff, featuring a treble clef and a common time signature (C). The notation includes a series of eighth notes and a 1/8 time signature.

Handwritten musical notation on a five-line staff, featuring a treble clef and a common time signature (C). The notation includes a series of eighth notes and a 1/8 time signature.

Handwritten musical notation on a five-line staff, featuring a treble clef and a common time signature (C). The notation includes a series of eighth notes and a 3/8 time signature.

Handwritten musical notation on a five-line staff, featuring a treble clef and a common time signature (C). The notation includes a series of eighth notes and a 4/8 time signature.

Handwritten musical notation on a five-line staff, featuring a treble clef and a common time signature (C). The notation includes a series of eighth notes and a 4/8 time signature.

Handwritten musical notation on a five-line staff, featuring a treble clef and a common time signature (C). The notation includes a series of eighth notes and a 4/8 time signature.

Handwritten musical score on ten staves. The notation includes various note values, rests, and dynamic markings such as *p* and *f*. The piece concludes with a double bar line and a fermata.

Fine