

Badische Landesbibliothek Karlsruhe

Digitale Sammlung der Badischen Landesbibliothek Karlsruhe

Symphonies - Don Mus.Ms. 1996

Vaňhal, Jan Křtitel

[S.l.], 1780 (1780c)

Violine I

[urn:nbn:de:bsz:31-117041](https://nbn-resolving.org/urn:nbn:de:bsz:31-117041)

Bellissima
No 1946

X

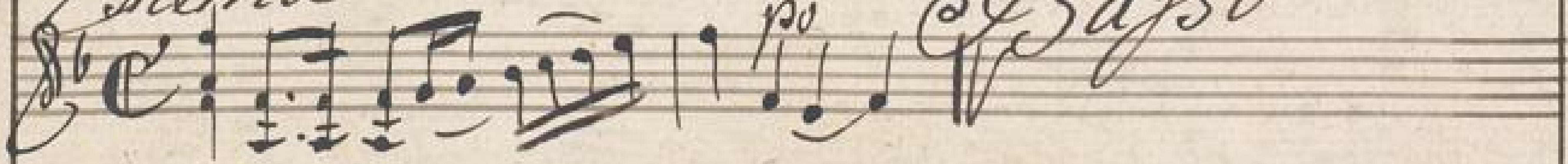
Sinfonia in *A*

Violino
Violino
Oboe
Oboe
Cornu
Cornu
Alto

Primo
Secundo
Primo
Secundo
Primo
Secundo
Viola

Del. Sigl. Xanhal
Thema

Con
Basso



(1578)

Allo

Violino Primo

Handwritten musical score for Violino Primo, page 2. The score consists of ten staves of music in C major, 4/4 time. It features various dynamics including piano (p), piano fortissimo (pp), and fortissimo (ff), along with accents and slurs. The notation includes eighth and sixteenth notes, rests, and repeat signs.

Handwritten musical score on ten staves. The notation includes various rhythmic values, dynamic markings such as *pp*, *mf*, and *ff*, and articulation marks. The piece concludes with the instruction *Segue Andante* written in cursive on the bottom staff.

Andante
Sempre piano

Handwritten musical score on ten staves. The notation includes various note values, rests, and dynamic markings. A '33' marking is present above the fifth staff, and a '42' marking is at the end of the tenth staff.

Menuetto

Trio

Menuetto Sacapo

J. S. Allò

6 *Allo*

A handwritten musical score on aged paper, consisting of 14 staves. The music is written in a cursive, historical style. The first staff begins with a treble clef and a common time signature. The notation includes various note values, rests, and dynamic markings such as *pp* and *3^a*. The score is densely packed with notes, particularly in the middle staves, suggesting a complex and technically demanding piece. The paper shows signs of age, with some staining and wear at the edges.

Handwritten musical notation on three staves. The top staff begins with a treble clef and a key signature of one flat. The first two staves contain dense, rhythmic passages with many beamed notes. The third staff concludes with a double bar line and a fermata over the final note.

Fine

