

Badische Landesbibliothek Karlsruhe

Digitale Sammlung der Badischen Landesbibliothek Karlsruhe

Zelmor und Ermide - Don Mus.Ms. 2081

Zimmermann, Anton

[S.l.], 1780 (1780c)

Romance. [Andantino]

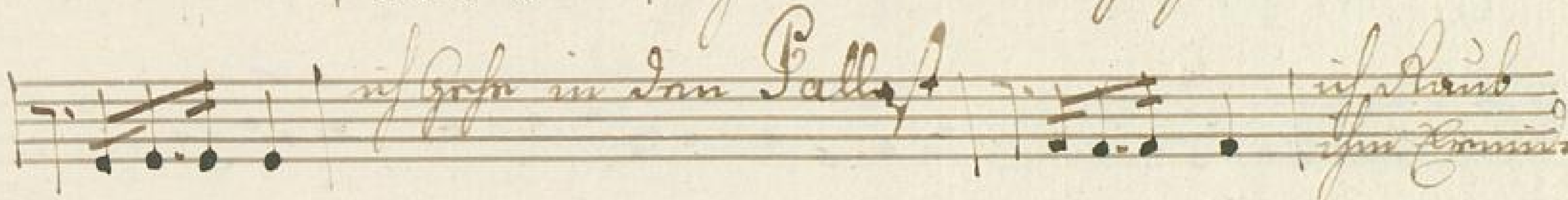
[urn:nbn:de:bsz:31-119399](https://nbn-resolving.org/urn:nbn:de:bsz:31-119399)



ist süßer mir zu Gassen so son hat ein brennend süßes
und brennend Gassen mit jedem süßes



ist Gasse in Gassen im Gassen
glaubens süßes



ist Gasse in dem Palast ist süßes
im Gassen

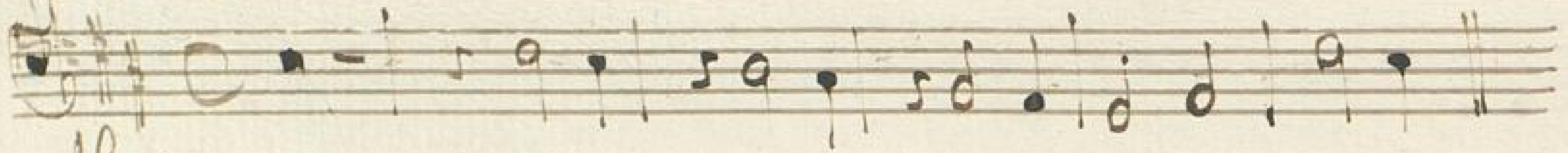


Romance

A page of handwritten musical notation on aged paper, featuring 12 staves. The notation is written in dark ink and includes various musical symbols such as notes, stems, beams, and rests. The first staff begins with a treble clef and a key signature of one flat. The music is organized into measures by vertical bar lines. There are several large, handwritten annotations in the left margin, including a large 'C' at the top and a large 'S' further down. The paper shows signs of age, with some staining and discoloration, particularly along the right edge where the binding is visible.

A page of handwritten musical notation on aged paper, featuring 12 staves. The notation is written in brown ink and includes various musical symbols such as notes, stems, beams, and rests. The first staff begins with a treble clef. The music is organized into measures across the staves. There are some corrections and erasures visible, particularly in the lower staves. The paper shows signs of age, including some staining and wear along the left edge.

Alto



Minore

