

# **Badische Landesbibliothek Karlsruhe**

**Digitale Sammlung der Badischen Landesbibliothek Karlsruhe**

## **Der Talisman - Don Mus.Ms. 2352**

**Bayer, Josef**

**[S.l.], 1900-1910 (20.in)**

Andante

[urn:nbn:de:bsz:31-123105](https://nbn-resolving.org/urn:nbn:de:bsz:31-123105)

# 3 Bild.

*Andte*  $\text{G}$   $\text{G}$   $\text{p}$

*Marsch*  $\text{G}$   $\text{p}$

*Presto*  $\text{p}$

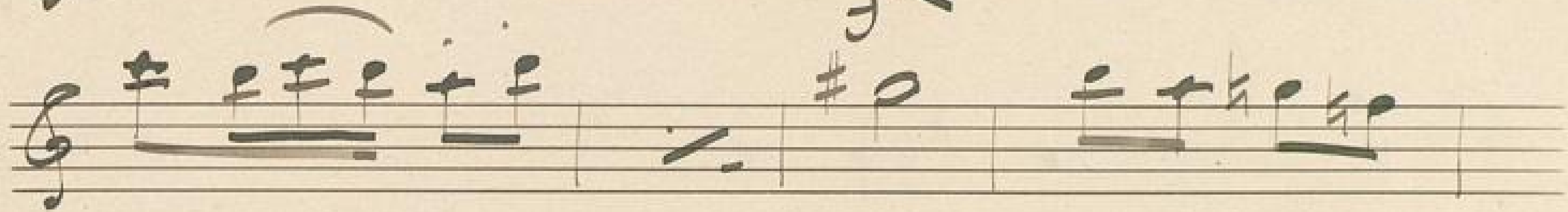
*Solka*



Handwritten musical score on ten staves. The score includes various musical notations such as clefs, notes, rests, and dynamic markings. Key markings include "pizz", "arco", "de", and "Breit". A blue line is drawn across the staves, starting from the right side of the fifth staff and extending upwards and to the left across the sixth, seventh, and eighth staves.

Marsch 





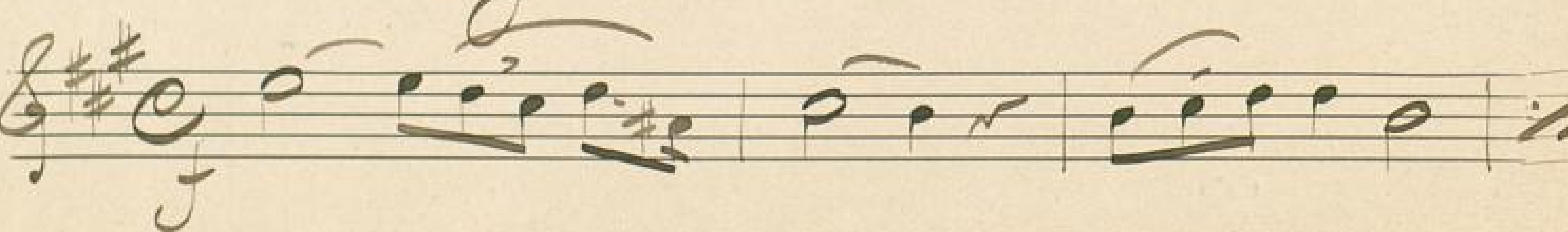
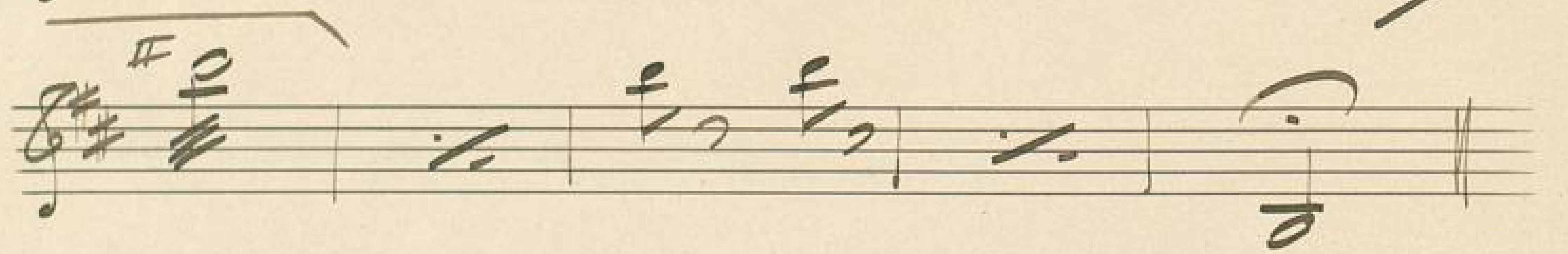
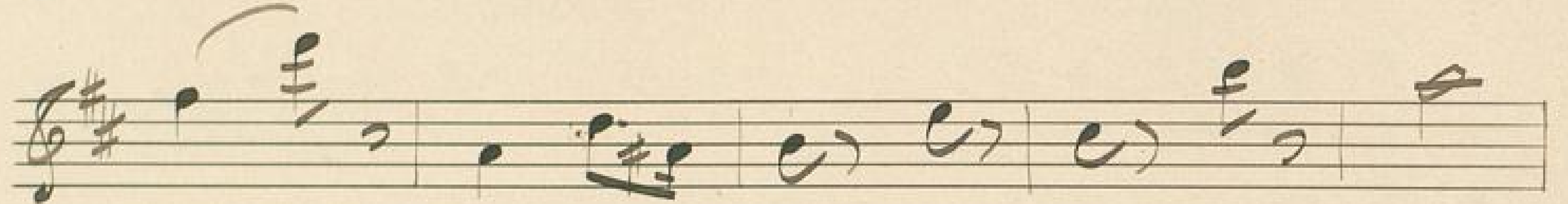
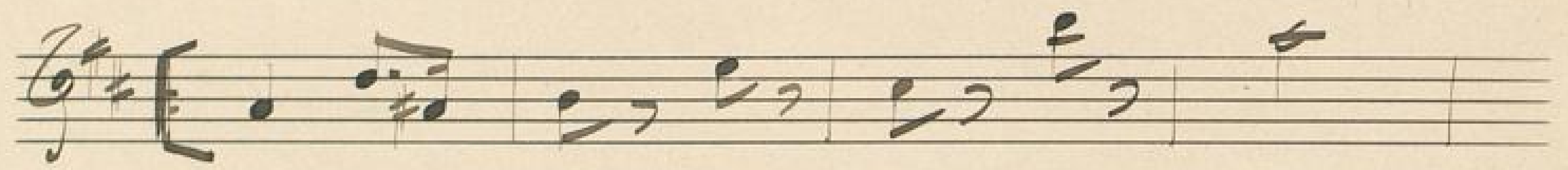








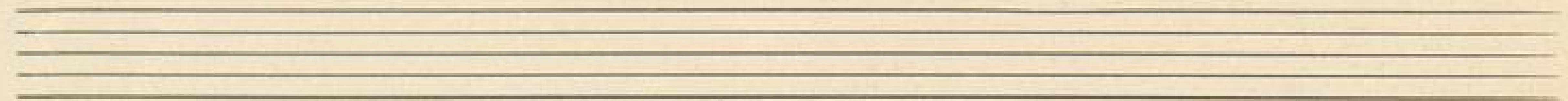
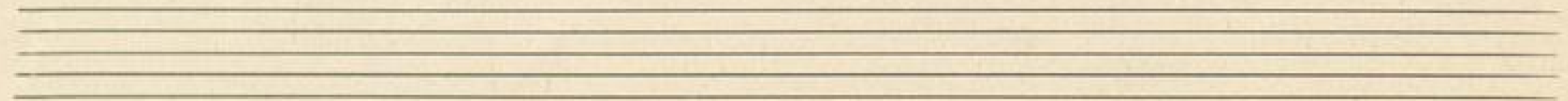
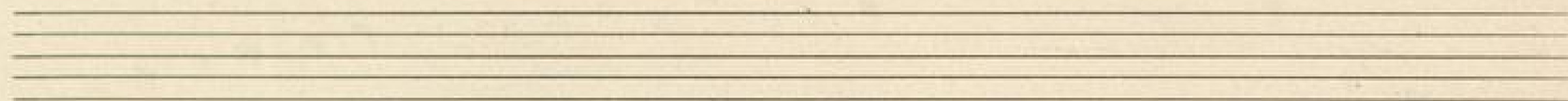




*Langsam*

*Walzer*

*Langsam*



Handwritten musical notation on ten staves. Each staff consists of five horizontal lines. The notation is sparse, with only a few notes and stems visible, primarily in the lower half of each staff. The notes are small and the stems are thin, suggesting a light or delicate musical piece. The handwriting is consistent throughout the page.



