

Badische Landesbibliothek Karlsruhe

Digitale Sammlung der Badischen Landesbibliothek Karlsruhe

Iohannis Michaelis Franzii Atlas Imperii

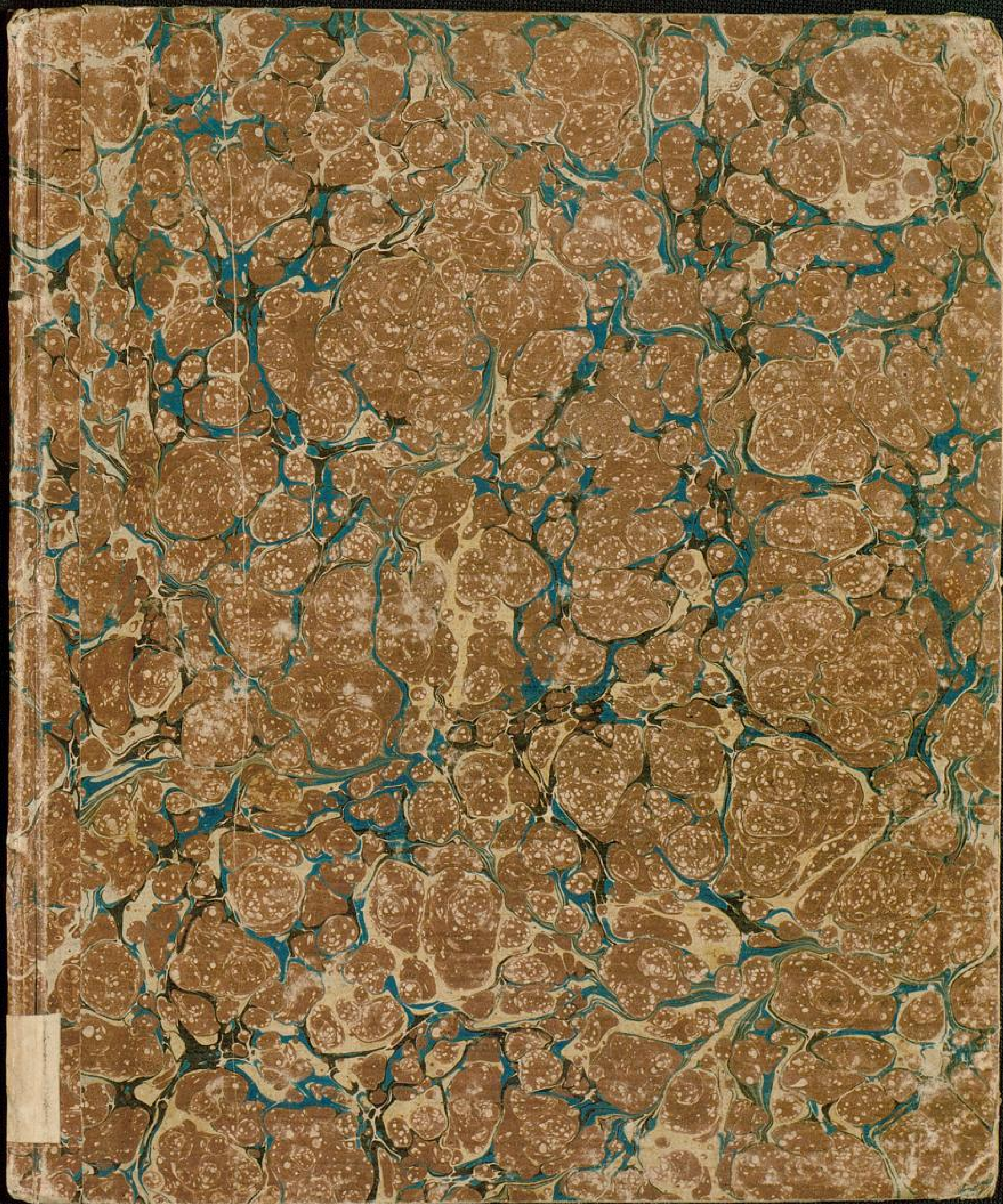
seu systema introductorium mapparum geographiae absolutae
Germanicae ...

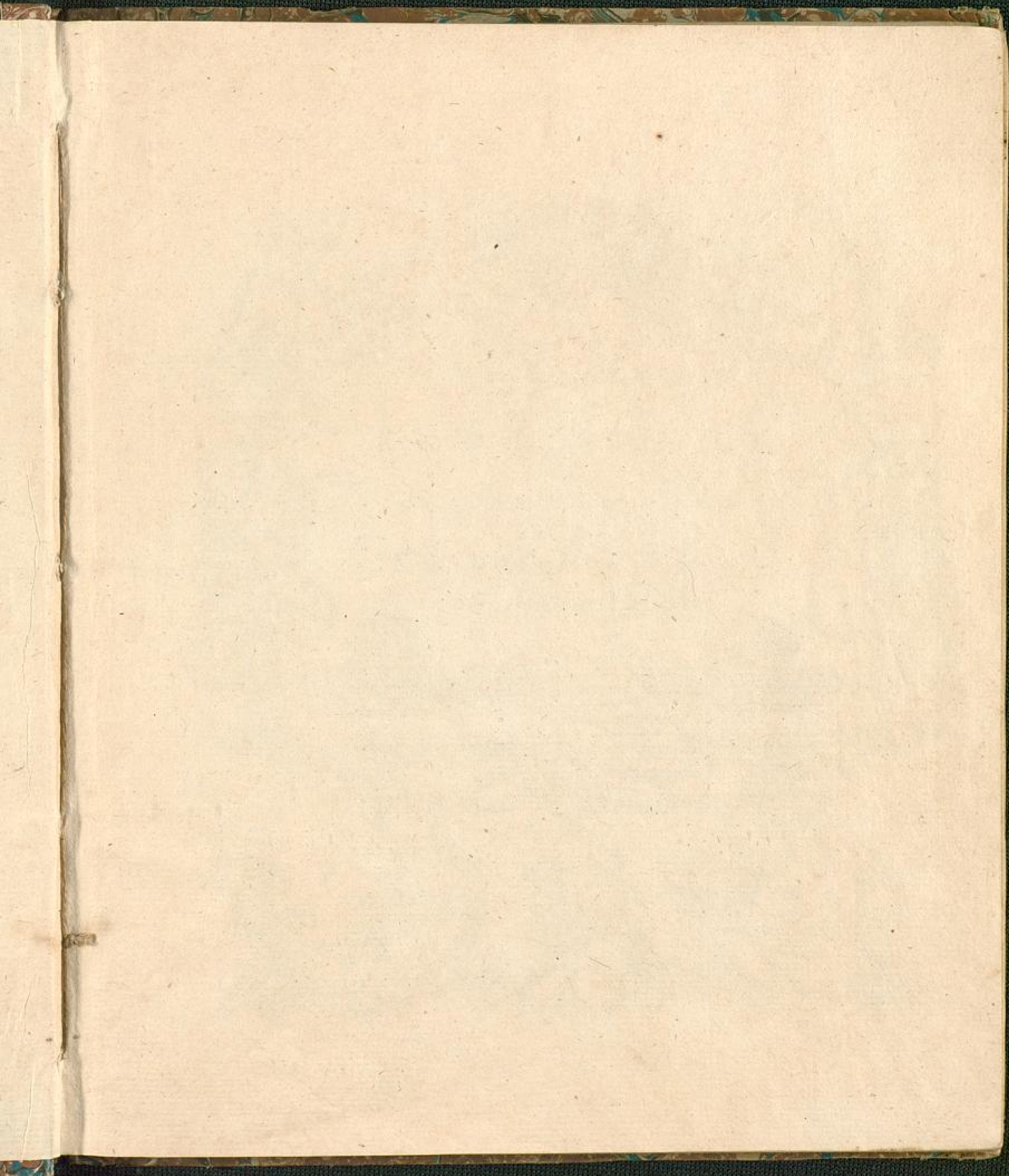
... quae recentioris aevi faciem XXI mappis ob oculos ponit ..

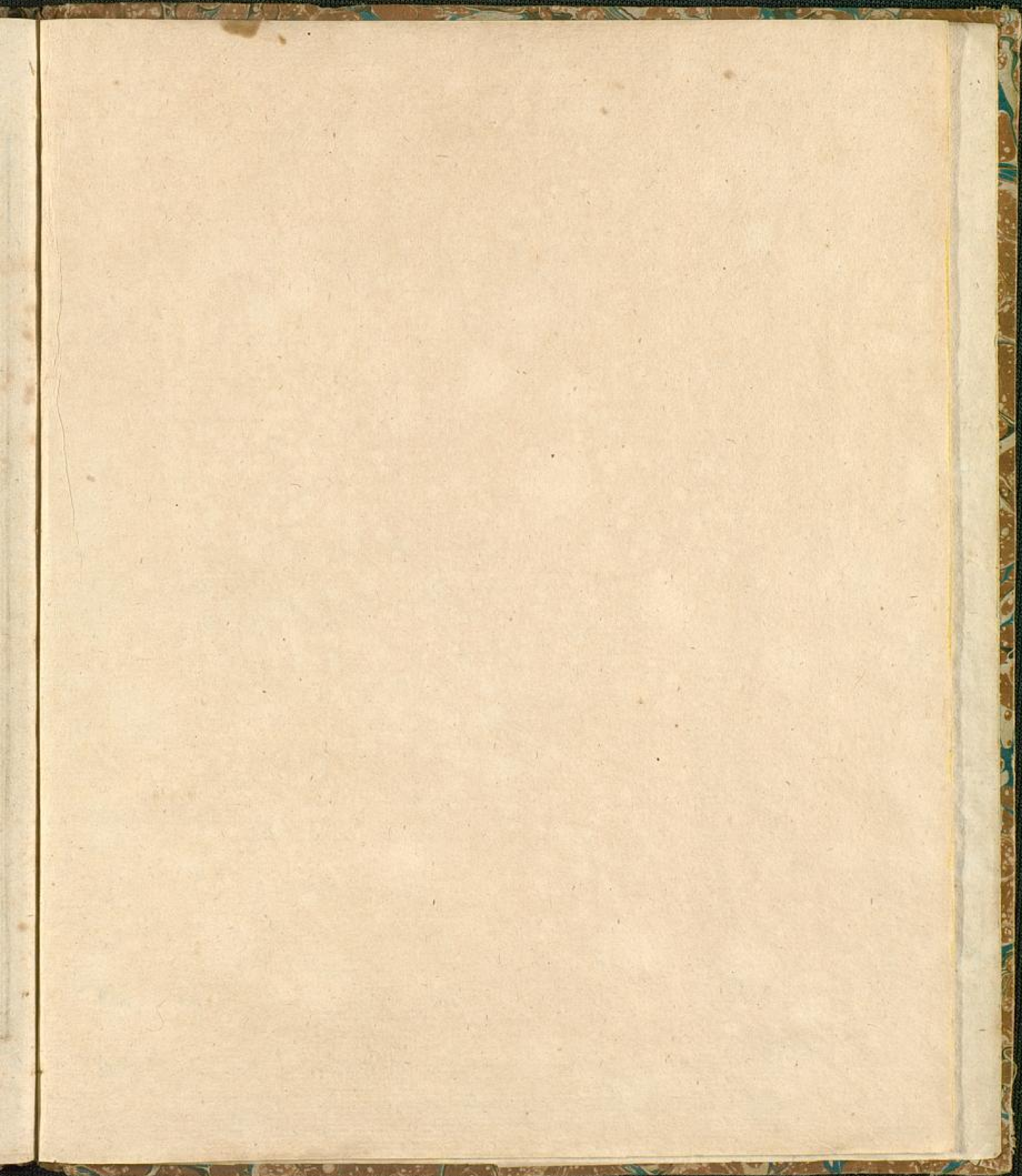
Franz, Johann Michael

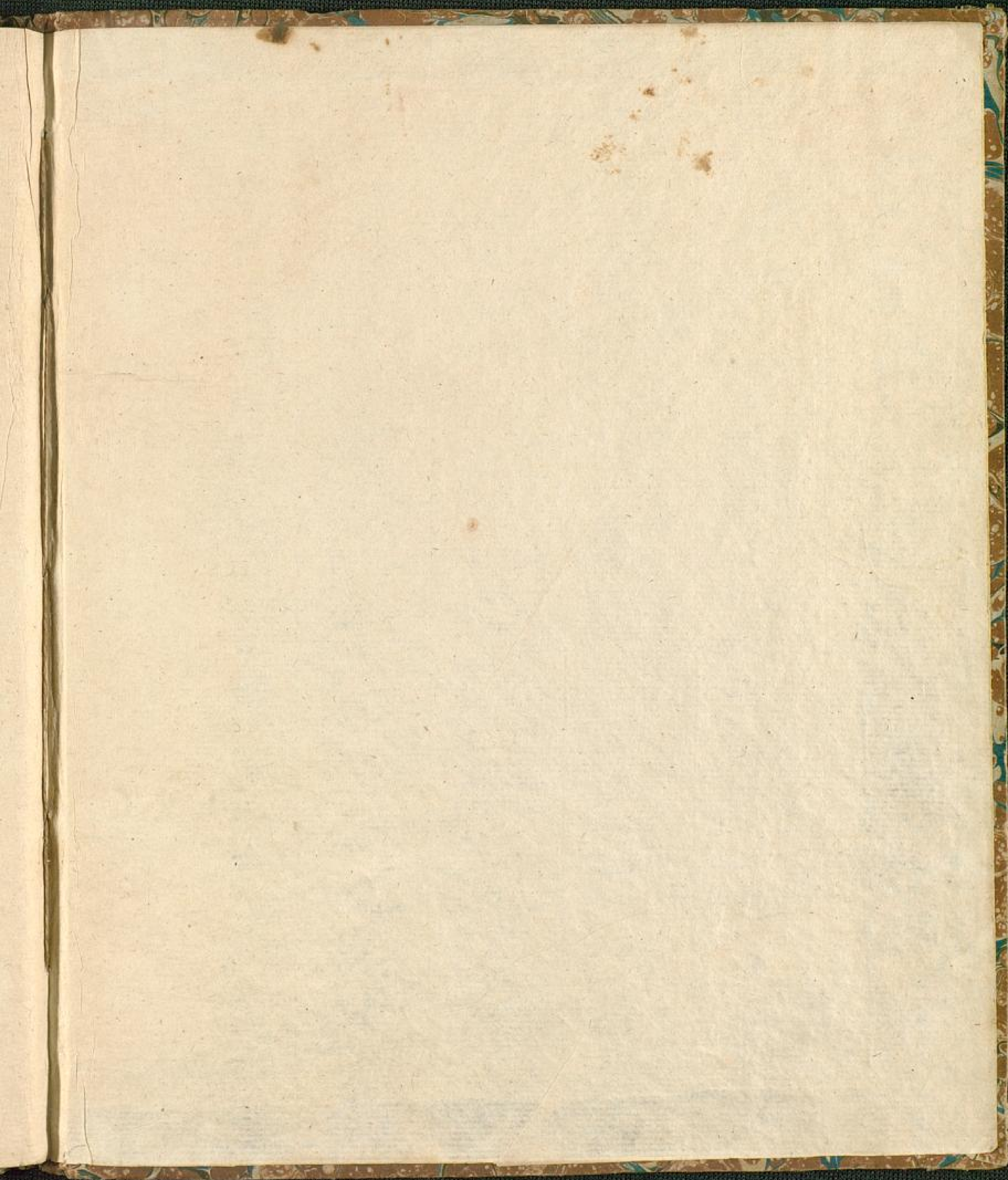
Goettingae, 1758

[urn:nbn:de:bsz:31-125867](https://nbn-resolving.org/urn:nbn:de:bsz:31-125867)











IOHANNIS MICHAELIS FRANZII
ATLAS IMPERII

seu

Systema introductorium mapparum
Geographiae absolutae Germanicae

*in quibus vicissitudines finium IMPERII GERMANICI
secundum triplicis aevi antiqui, mediæ et recentioris
statum graphice exhibentur.*

PARS PRIMA,

*quæ recentioris aevi faciem XXI mappis
ob oculos ponit.*

*Addita introductione, totius instituti rationes
finemque et methodum atlantis explicante.*

Cura et impensis auctoris, Coheredis Homanniani.

Goettingae A. MDCCLVIII.

D. Ratzer. SS.



Dr. J. J. G. J. J.

S







REGNI GERMANIAE delineatio, secundum X Circulorum divisionem
veram suam figuram finesque hodiernos circularum et regni totius exacte referens.

[Loca stellulis notata sunt directorialia, hoc est quorum domini territoriales sunt circuli istig directoras.]



ROYAUME DE BAVIERE
LE ROI
LE ROI
LE ROI

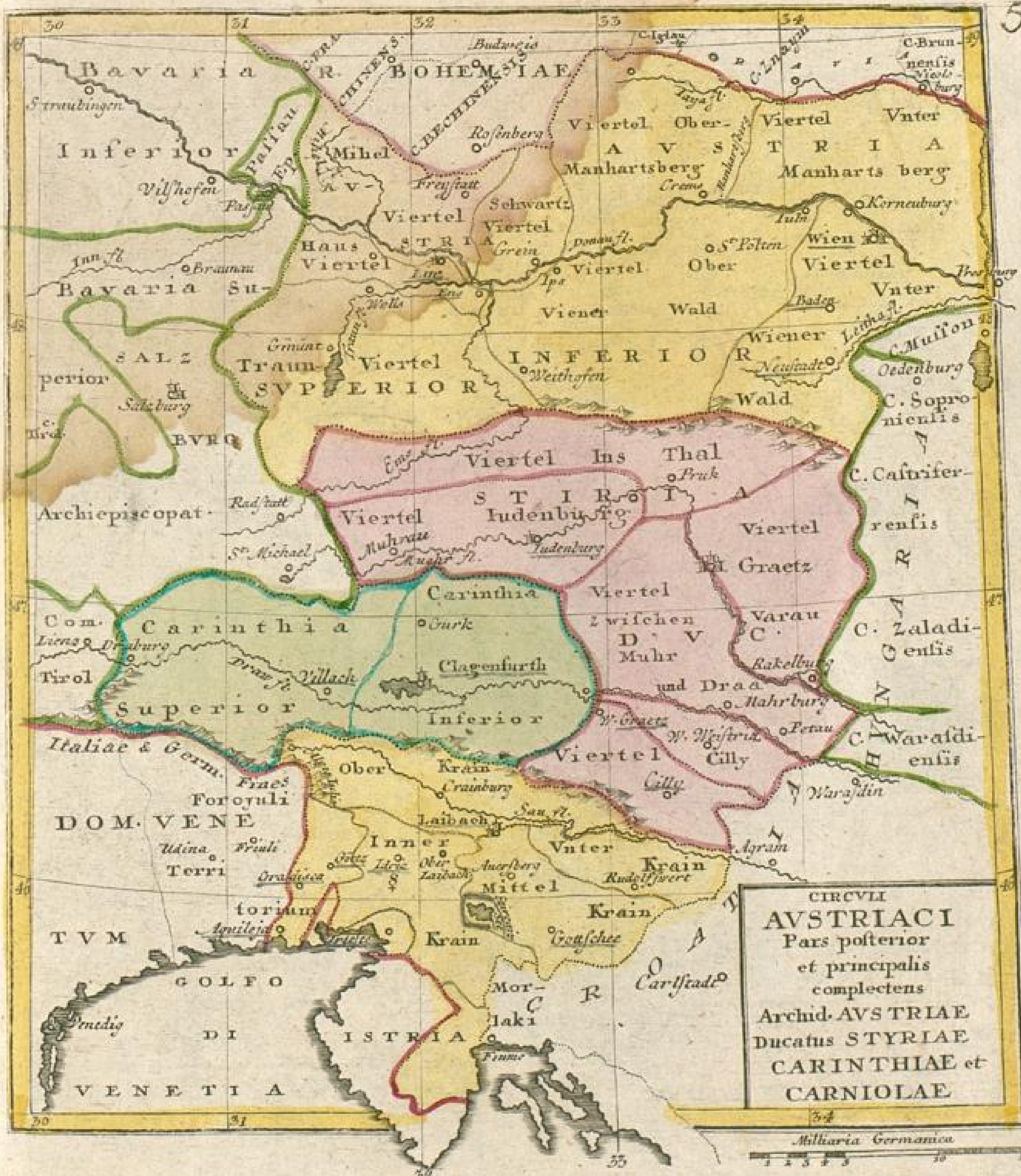


55
52
51
50
49

Handwritten notes at the top of the page, including "Sachsen aber die zu Schlesien"







5



Handwritten text, likely bleed-through from the reverse side of the page. The text is arranged in several lines and is difficult to decipher due to fading and bleed-through. Some legible words include "GARTEN" and "AL".



CIRCULI AVSTRIACI
 Pars anterior —
 comprehendens COMIT. TIROLENSEM
 et Territoria Suevica —

Tabula Germaniae 17



Handwritten text, likely bleed-through from the reverse side of the page. The text is faint and difficult to decipher but appears to include a name and possibly a date or location.

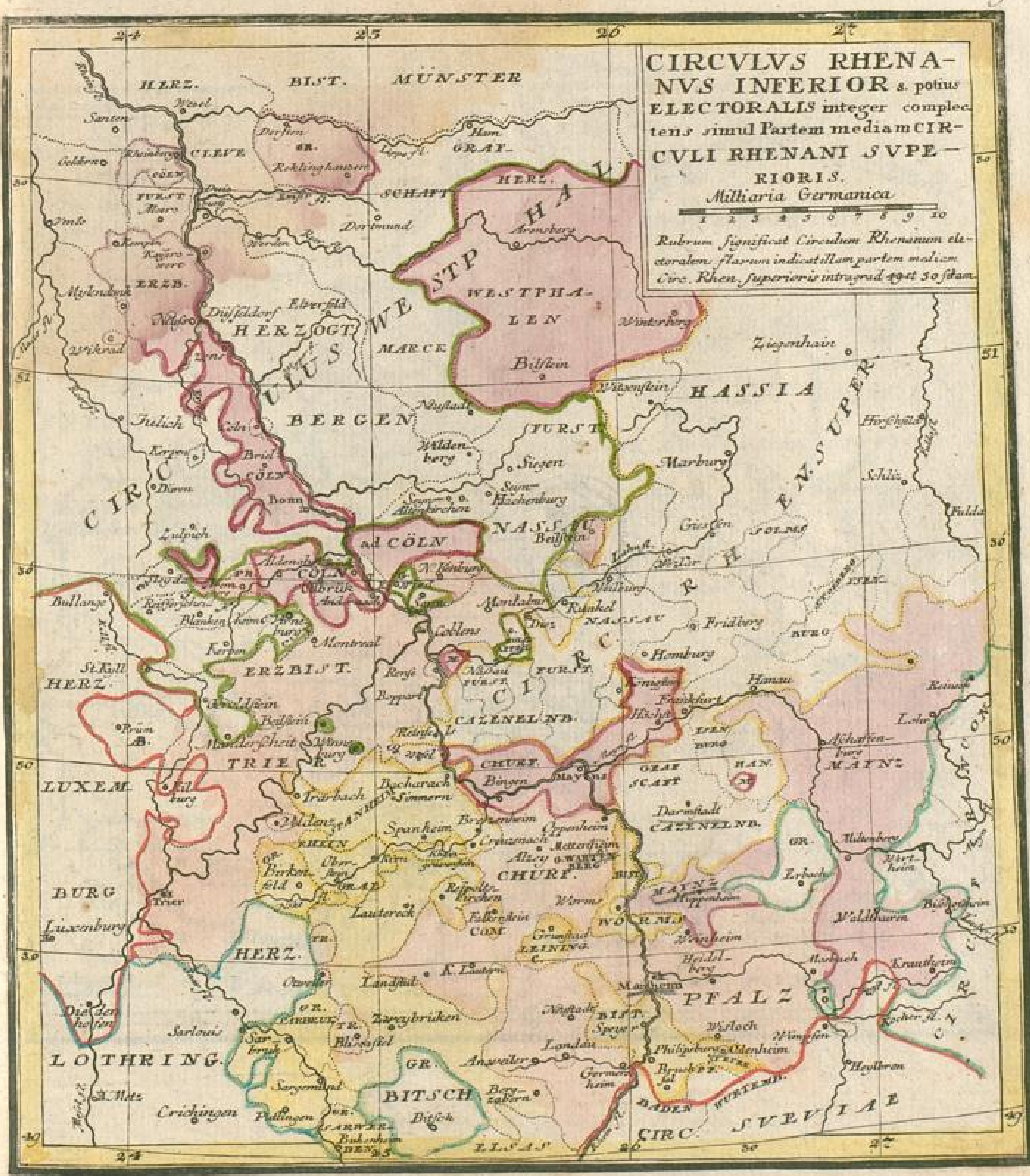




CIRCVLVVS BVRGVNDICVS



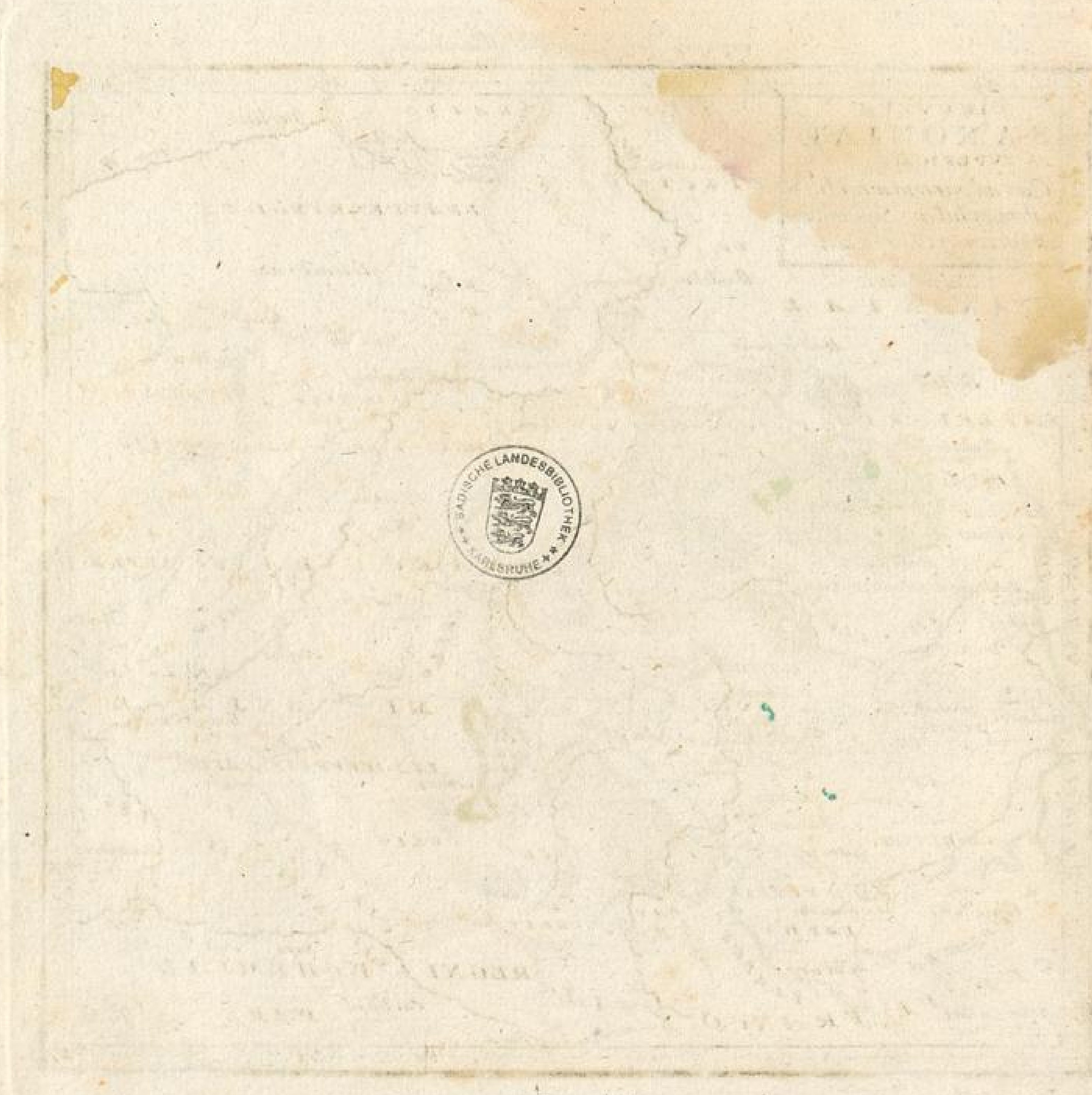






30
31
32
33
34
35
36
37
38
39
40
41
42
43
44
45
46
47
48
49
50
51
52
53
54
55
56
57
58
59
60
61
62
63
64
65
66
67
68
69
70
71
72
73
74
75
76
77
78
79
80
81
82
83
84
85
86
87
88
89
90
91
92
93
94
95
96
97
98
99
100

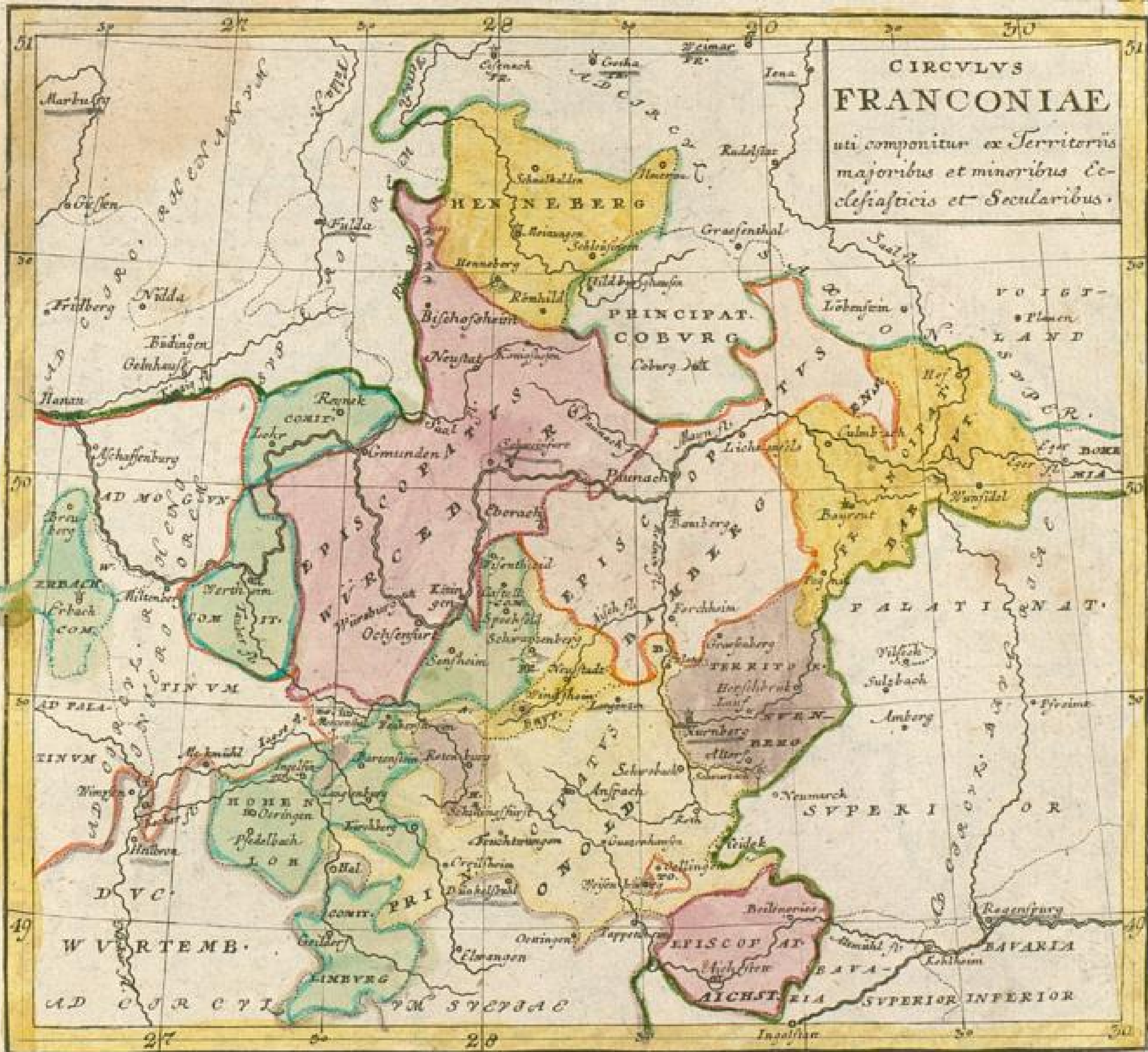


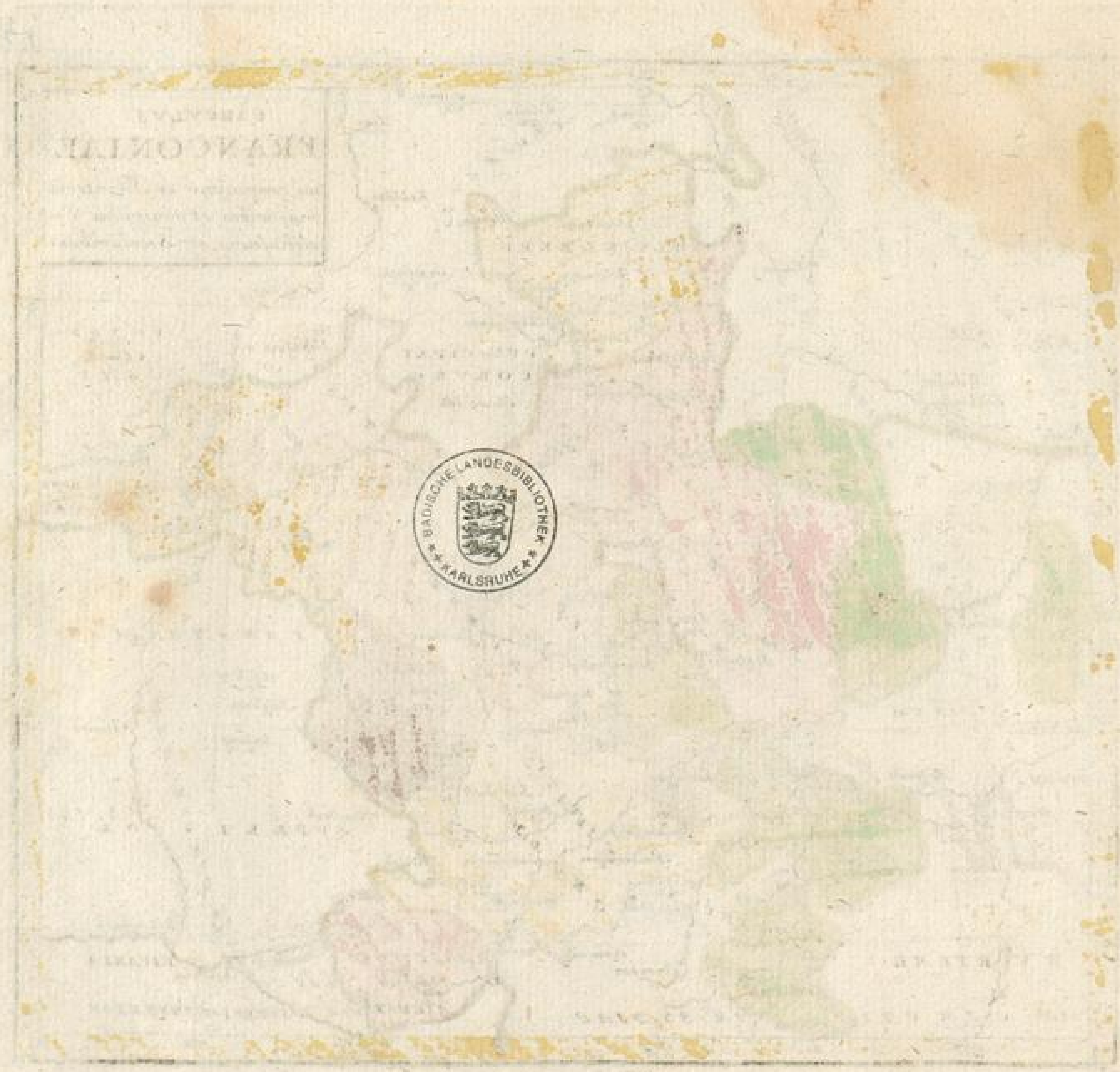


59
S
P
te
58
57



51
30
50
49

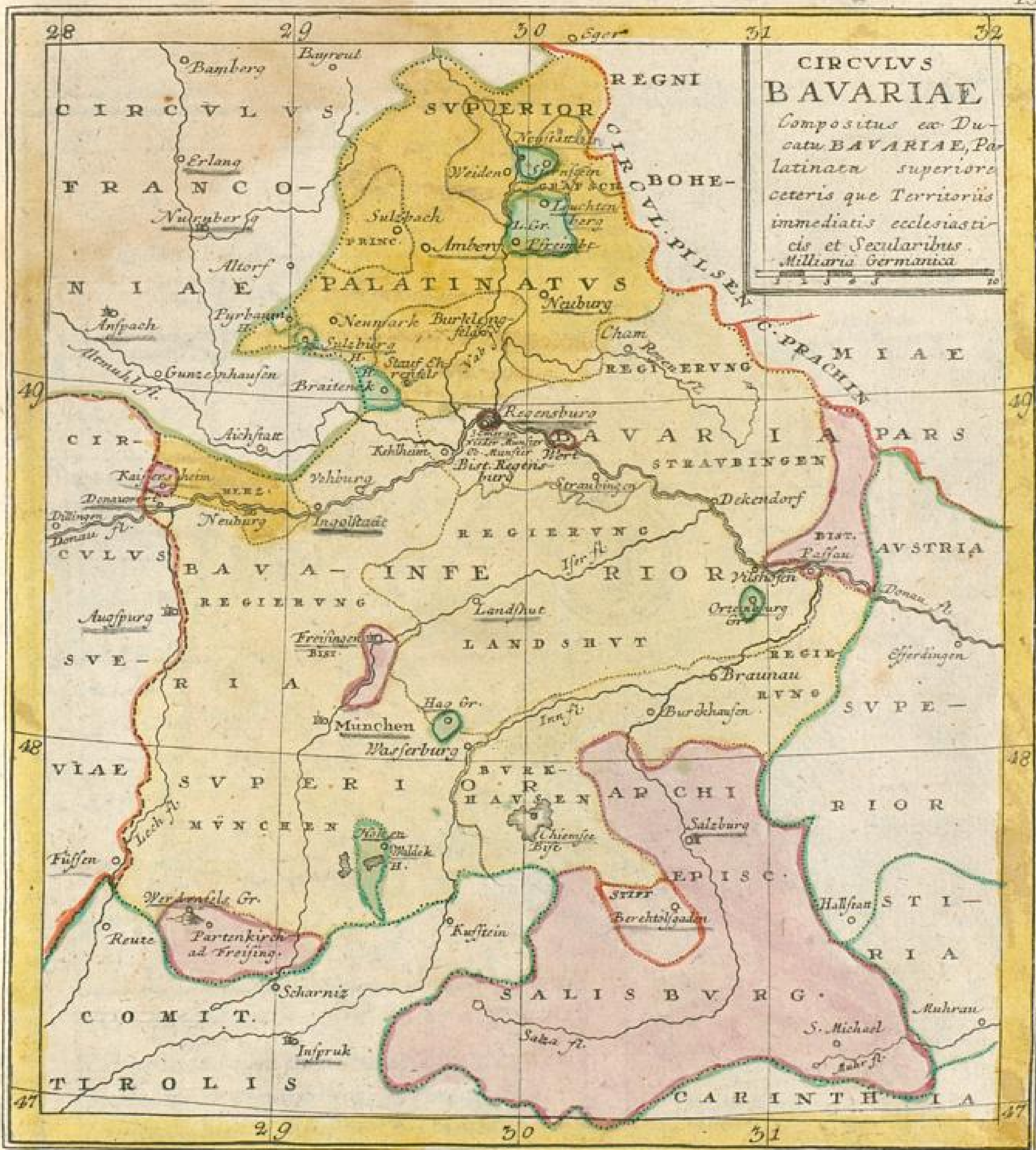




49

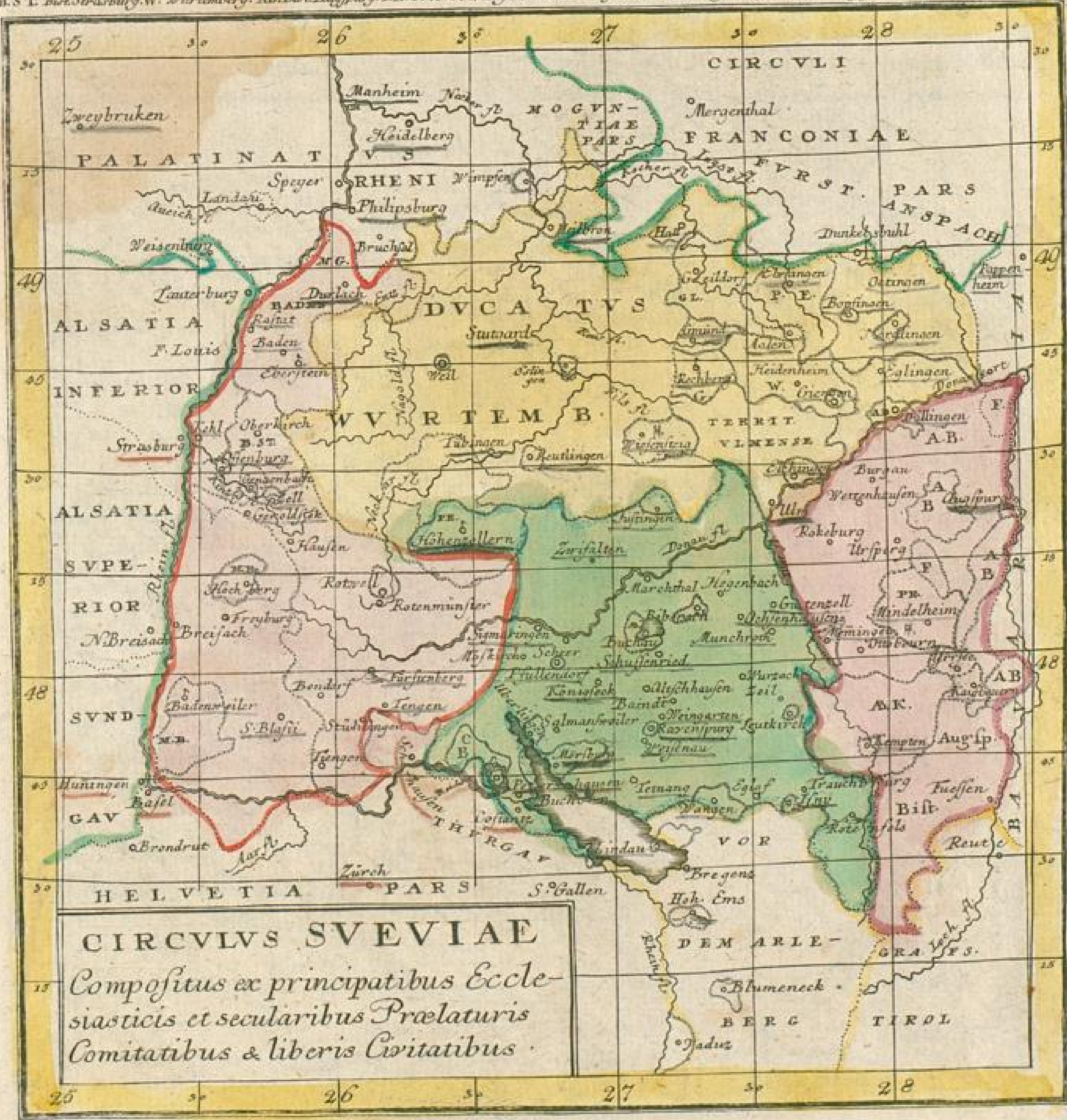
48

47



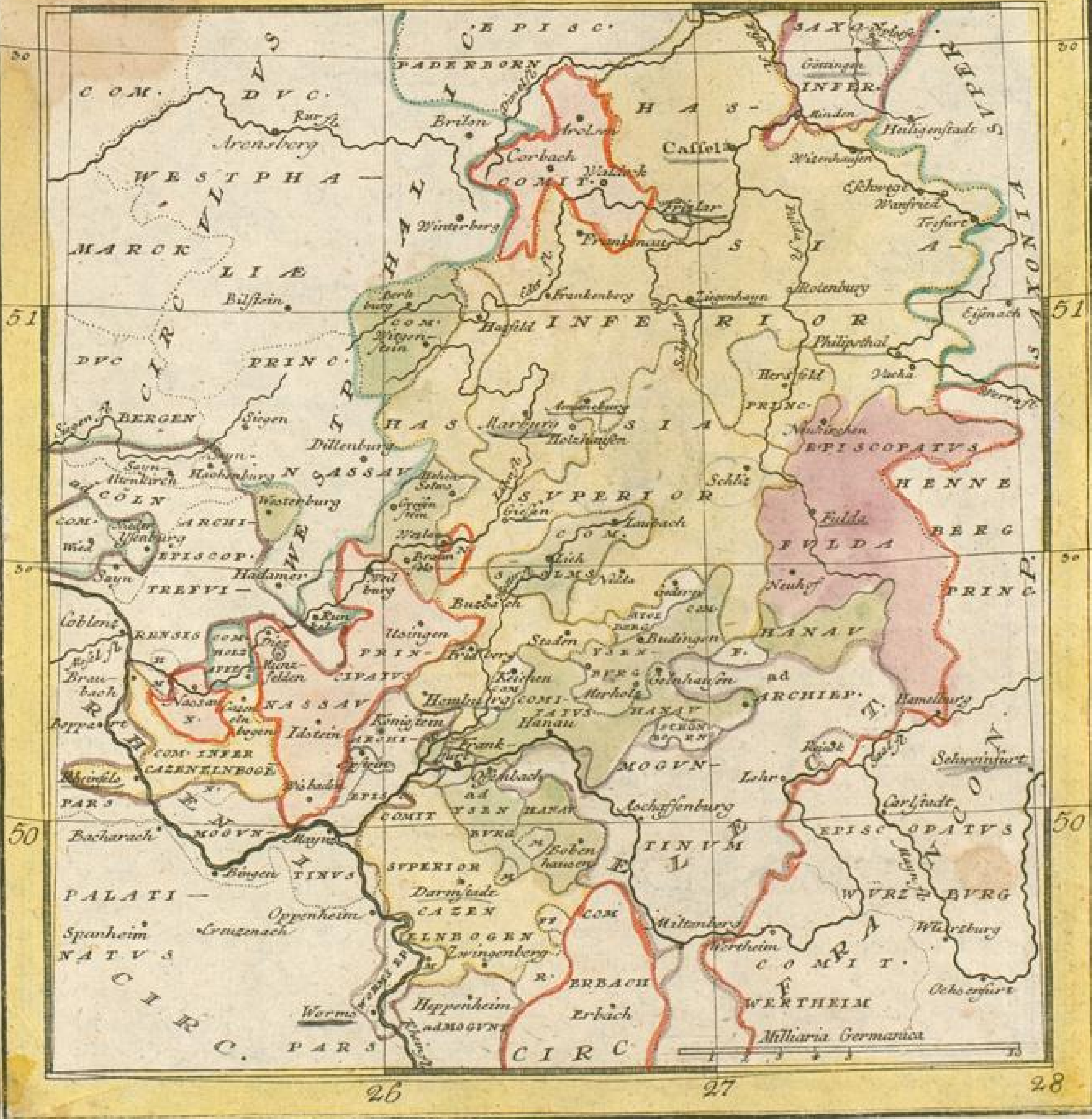


B. S. T. Bist. Strasburg. W. Württemberg. AB. Bist. Augspurg. P. B. Probst. Zwangen. B. C. Bist. Constant. B. K. Abtey. Kempton. M. B. Marggr. Baden. G. L. Grafth. Lömpurg.

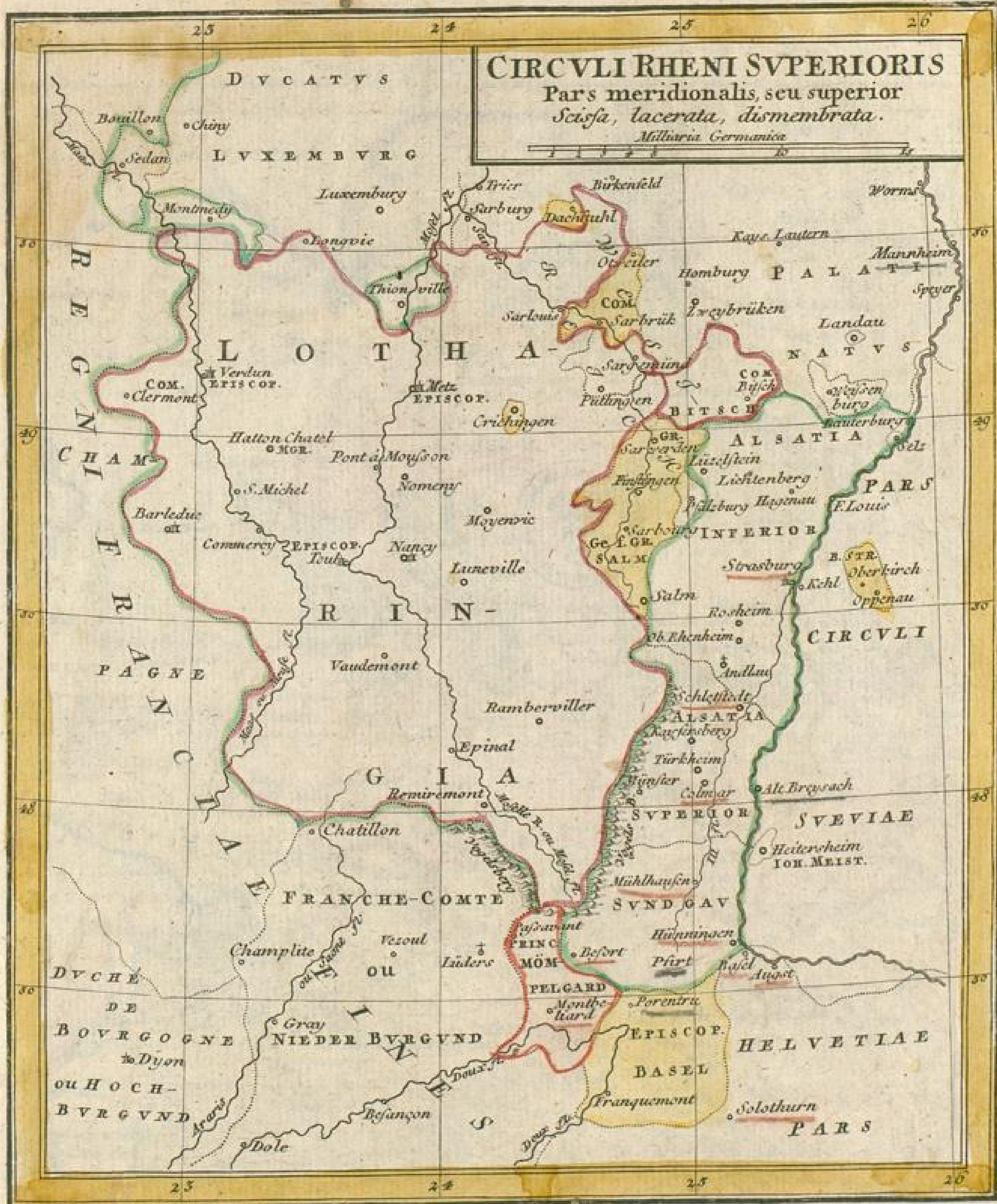




CIRCVLI RHENI SVPERIOR: Pars septentrionalis seu infima [F. Fulda H. Nassau M. Mogunt. N. Nassau R. Ord. Equestris PP. Palatin S. Solms]



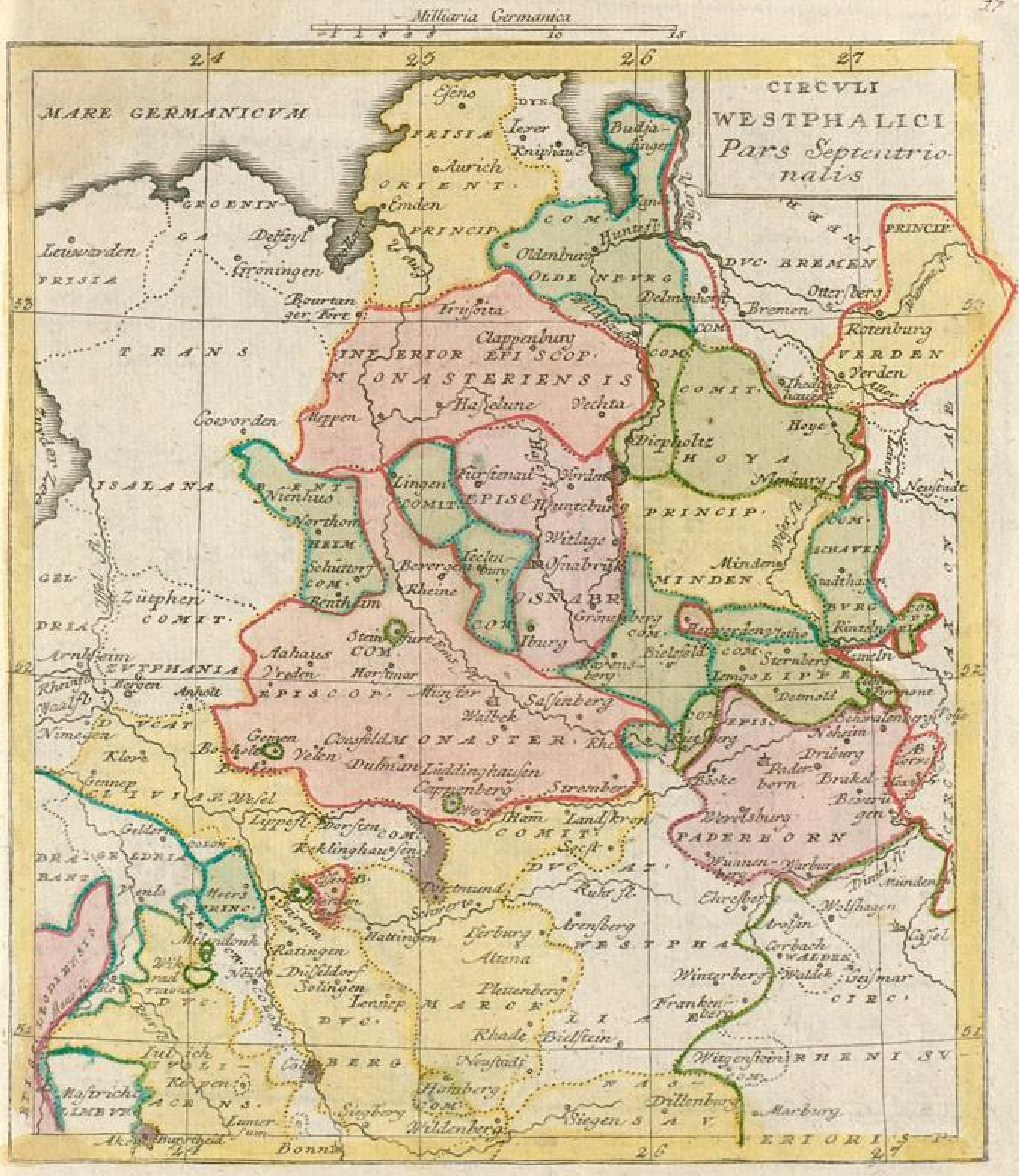






CIRCULVS RHENI SUPERIORIS
Parte meridionali seu superior
hujus locorum administratio







CIRCVLI
WESTPHALICI Pars meridionalis





CIRCVLVVS SAXONIAE INFERIORIS.



SAXONIAE INFERIORIS



HETZEL ab antipio gars Imperii Romano-
et per hunc negotiorum tota in parte comparanda
quodam ex parte in hunc negotiorum hunc hunc
et hunc hunc hunc hunc hunc hunc hunc hunc
Dante hunc hunc hunc hunc hunc hunc hunc hunc

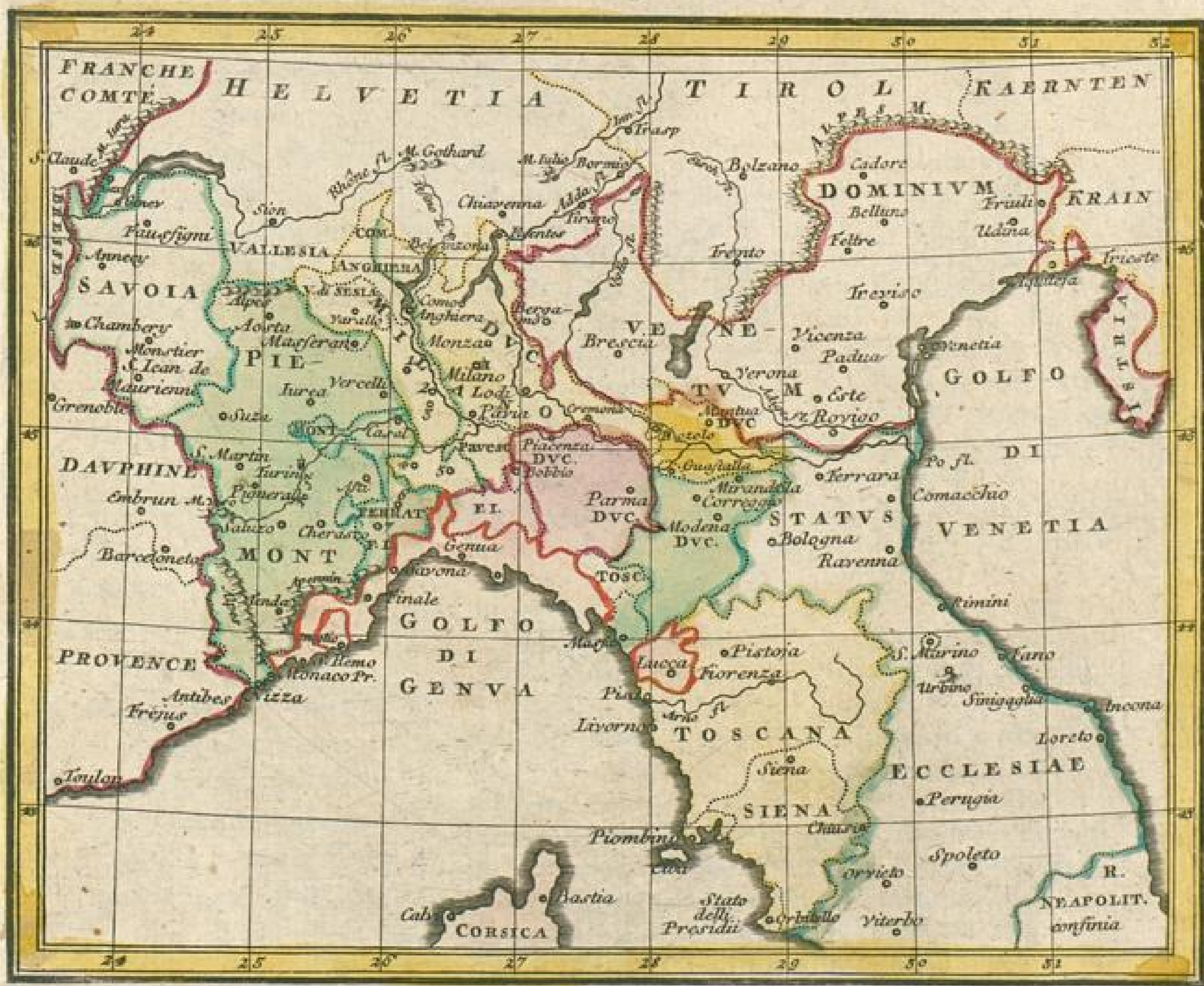


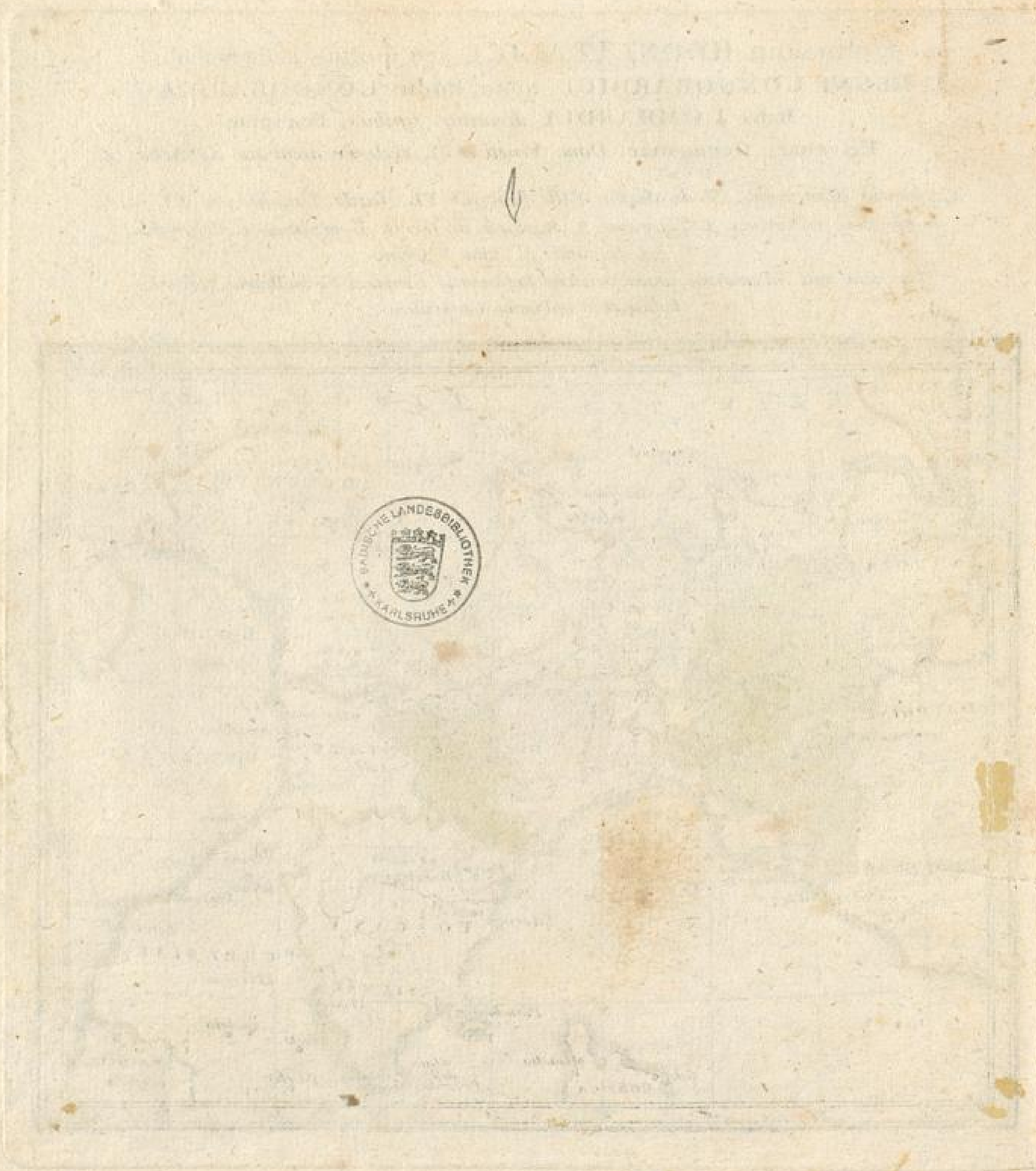
**Delineatio REGNI ITALICI, seu potius reliquiarum
REGNI LONGOBARDICI, quae hodie LONGOBARDIA seu
Italica LOMBARDIA dicuntur, finibus Franciae**

Helvetiae, Germaniae, Dom. Veneti et St. Ecclesiae accurate distinctis.

*Explicatio Signorum V. di Sessia, Valle di Sessia FL. feuda Langharum, FL feuda
Imperialia. 1. Novara. 2. Vigevano. 5. Mortara in territ. Lomellino. 4. Alessandria.
5. Tortona. 6. Aquì. 7. Spigno*

*Pro Scala null notandum, unum gradum latitudinis complecti 60 miliaria comunia
Italica, et 15 miliaria Germanica.*





D
1
2
3
4
5
6
7
8
9
10
11
12
13
14
15
16
17
18
19
20
21

Designatio mapparum
Atlantis Imperialis.

- 1 Imperium Germanicum sub Imperatore Maximil. I.
- 2 Regnum Germaniae secundum partes originarias.
- 3 Regnum Germaniae secundum Circulos.
- 4 Regnum Bohemiae.
- 5 Circuli Austriaci pars posterior.
- 6 Circuli Austriaci pars anterior.
- 7 Circulus Burgundicus integer.
- 8 Circulus Burgundicus hodiernus.
- 9 Circulus electoralis.
- 10 Circulus Saxoniae superioris. [pars meridionalis]
- 11 Circulus Saxoniae superioris. [pars septentrionalis]
- 12 Circulus Franconicus.
- 13 Circulus Bavaricus.
- 14 Circulus Sueviae.
- 15 Circuli Rheni superioris pars infima.
- 16 Circuli Rheni superioris pars superior.
- 17 Circulus Westphalicus. [pars septentrionalis]
- 18 Circulus Westphalicus. [pars meridionalis]
- 19 Circulus Saxoniae inferioris.
- 20 Helvetia.
- 21 Regnum Italiae.

Designatio Statuum Imperii
alphabetica,

ad Numerum cuiusvis mappae
acommodata à Non. +
usque ad 19.

A

- Aachen, Reichsstadt 18
- Aalen, Rostadt 14
- Alschhausen, Herrschaft 14
- Altenburg, Fürstenthum 10
- Anhalt, Fürst. 10
- Anholt, Herrsch. 17
- Antwerpen, Marggr. 8
- Aremberg, Fürst. 9
- Augspurg, Bistum 14
- Augspurg, Rostadt 14

B

- Bamberg, Bist. 12
- Baaden-Baaden, Marggr. 14
- Baaden-Durlach 14
- Baird, Abtey 14
- Bar, Landgr. 14
- Barbi u. Mühligen, Gr. 20
- Basel, Bist. + 16.20
- Bayern, Churfürst. 15
- Bentheim, Gr. 17
- Beilstein, Nassau-Diez, H. 9
- Beilstein, Metternich H. 9.18
- Berchtoldsgaden, Abt. 15
- Bergen, Herz. 17.18
- Bergen, Gr. 17

- Biberach Rostadt 14
- Blankenburg, Fürst. 19
- Blankenheim, Gr. 18
- Böhmen 4
- Bondorf, Gr. 14
- Bopfingen, Rostadt 14
- Brabant, Herz. 8
- Brandenburg, Churfürst. 11
- Brandenburg-Culmb. Fürst. 12
- Brandenburg-Onolzbach, Fürst. 12
- Braunschweig-Lüneburg, Herz. 19
- Braunschweig-Calenberg, Fürst. 19
- Braunschweig-Grubenhagen, Herz. 19
- Braunschweig I. Wolfenbüttel, Herz. 19

- Breitenek, Herrsch. 15
- Bremen, Herz. 19
- Bremen, Rostadt 19
- Brezenheim, Herrsch. 9
- Brixen, Bist. 6
- Buchau, Abt. 14
- Buchau, Rostadt 14
- Buchhorn, Rostadt 14
- Burgund. Kreis. 7.8

C

- Calenberg, Fürst. 19
- Camin, Bist. 11
- Castell, Gr. 12
- Chur, Bist. 20
- Cleve, Herz. 17
- Cöln, Churfürst. 9
- Cöln, Rostadt 17
- Coblenz, Balley 9
- Corneli-Münster, Abt. 18
- Corvey, Abt. 17
- Costanz, Bist. + 14
- Crichingen, Gr. 16

D

- Dachstuhl, Herrsch. 16
- Deutsch Ord. zu Mergenthal 12
- Deutsch Orden zu Alschhausen 14
- Delmenhorst, Gr. 17
- Diepholz, Gr. 17
- Donauwert, Rostadt 14
- Dortmund, Rostadt 17
- Dünkelspiel, Rostadt 14

E

- Eberstein, Gr. 14
- Eglingen, Herrsch. 14
- Eglof, Gr. 14
- Ehrenfels, Herrsch. 15
- Eichstedt, Bist. 12
- Eisenach, Herz. 10
- Elchingen, Probstei 14
- Elwangen, Probst. 14
- Erbach, Gr. 12
- Erlingen, Rostadt 14
- Erfen, Abt. 17

F

- Falkenstein, Gr. 15

Faint, illegible text, likely bleed-through from the reverse side of the page. The text is arranged in several columns and is mostly mirrored across the center.



<i>Flandern Gr.</i>	8	<i>Hohenzuldek Gr.</i>	15	<i>Luxemburg Herz.</i>	8
<i>Frankfurth Rstadt</i>	15	<i>Hoja Gr.</i>	17	M	
<i>Freisingen Bist.</i>	15	<i>Holzappel Gr.</i>	9. 15	<i>Machren Marggr.</i>	4
<i>Friedberg Rstadt</i>	15	<i>Holstein-Gluckstadt Herz.</i>	19	<i>Magdeburg Herz.</i>	19
<i>Fuggerische Länder</i>	14	<i>Holstein-Gottorf Herz.</i>	19	<i>Mansfeld Gr.</i>	10
<i>Fulda Bist.</i>	15	I		<i>Marchthal Prael.</i>	14
<i>Fürstenberg Heiligenberg</i>	14	<i>Iever Herrsch.</i>	17	<i>Mark Gr.</i>	17
<i>Fürstenberg Mösckirch</i>	14	<i>Iler Aichheim Herrsch.</i>	14	<i>Maynz Churfürst.</i>	9
G		<i>Iohann. Meist. zu Heidersheim</i>	10	<i>Meckeln Herrsch.</i>	8
<i>Gehmen Gr.</i>	17	<i>Isenburg Nieder Gr.</i>	9	<i>Meklenb. Schwerin H.</i>	19
<i>Geldern Herz.</i>	8	<i>Isenburg Ober Gr.</i>	15	<i>Meklenb. Güstrow H.</i>	19
<i>Gemünd Rstadt</i>	14	<i>Isni Rstadt</i>	14	<i>Meißren Marggr.</i>	10
<i>Gengenbach Praelatur</i>	14	<i>Julich Herz.</i>	17. 18	<i>Memmingen Rstadt</i>	14
<i>Gengenbach Rstadt</i>	14	<i>Iustingen Herrsch.</i>	14	<i>Merssburg Bist.</i>	10
<i>Gernrode Stift</i>	10	K		<i>Minden Fürst.</i>	17
<i>Geroldsek Herrsch.</i>	14	<i>Kaufbayern Rstadt</i>	14	<i>Moers Fürst.</i>	17. 18
<i>Geroldstein Herrsch.</i>	18	<i>Kaernten Herz.</i>	5	<i>Montfort Gr.</i>	14
<i>Giengen Rstadt</i>	14	<i>Kayserheim Abt.</i>	14	<i>Moravia</i>	4
<i>Goslar Rstadt</i>	19	<i>Kempten Abt.</i>	14	<i>Mühlhausen Rstadt +</i>	19
<i>Gotha Herz.</i>	10	<i>Kempten Rstadt</i>	14	<i>Mindelheim H.</i>	14
<i>Grafenek Gr.</i>	14	<i>Kerpen u. Lommersum H.</i>	18	<i>Münster Bist.</i>	17
<i>Gronsfeld Gr.</i>	18	<i>Kinzingerthal H.</i>	14	<i>Münster Nieder Prael.</i>	15
<i>Grubenhagen Herz.</i>	19	<i>Kniphhausen Herrsch.</i>	17	<i>Münster Ober Prael.</i>	15
<i>Gundelfingen H.</i>	14	<i>Königsek Adendorf Gr.</i>	14	<i>Münzfelden H.</i>	15
<i>Gutenzell Abt.</i>	14	<i>Königsek Rotensels Gr.</i>	14	<i>Mylendonk H.</i>	17
<i>Gymborn u. Neustadt H.</i>	17	<i>Königstein Gr.</i>	9	N	
H		<i>Krayn Herz.</i>	5	<i>Namur Gr.</i>	8
<i>Hag Grabsch.</i>	15	L		<i>Nasrau Weilbury</i>	15
<i>Hall Rstadt</i>	14	<i>Lauenburg Herz.</i>	19	<i>Nasrau Sarbruk Ottv. Gr.</i>	16
<i>Hallermund Gr.</i>	17	<i>Lausniz Marggr.</i>	4	<i>Nasrau Siegen Gr.</i>	17. 15
<i>Halberstadt Fürst.</i>	19	<i>Leiningen Heidesch. Hartenb. Gr.</i>	9	<i>Nasrau Dillenburg Gr.</i>	17. 15
<i>Hausen Herrsch.</i>	12	<i>Leiningen Grünt Westerb. Gr.</i>	9. 15	<i>Naumburg Bist.</i>	19
<i>Hamburg Rstadt</i>	19	<i>Leuchtenberg Landgr.</i>	15	<i>Nordhausen Rstadt</i>	19
<i>Hanau-Münzenberg Gr.</i>	15	<i>Leutkirch Rstadt</i>	14	<i>Nördlingen Rstadt</i>	14
<i>Hanau-Lichtenberg Gr.</i>	16	<i>Lichtenstein Fürst.</i>	4	<i>Nürnberg Rstadt</i>	12
<i>Hegbach Abt.</i>	14	<i>Limburg Herz.</i>	8	O	
<i>Heilbronn Rstadt</i>	14	<i>Limpurg Gr.</i>	12	<i>Oberstein H.</i>	9
<i>Henneberg Gr.</i>	12	<i>Lindau Abt.</i>	14	<i>Ochsenhausen Prael.</i>	14
<i>Hennegau Gr.</i>	8	<i>Lindau Rstadt +</i>	14	<i>Odenheim Stift</i>	9
<i>Hervord Abt.</i>	17	<i>Lippe Gr.</i>	17	<i>Oesterreich ErzH.</i>	5
<i>Hessen-Cassel</i>	15	<i>Löwenstein Wertheim</i>	12	<i>Oettingen Gr.</i>	14
<i>Hessen-Darmstadt</i>	15	<i>Lübek Bist.</i>	19	<i>Offenburg Rstadt</i>	14
<i>Hildesheim Bist.</i>	19	<i>Lübek Rstadt</i>	19	<i>Ollbrük H.</i>	9
<i>Hohenlohe Gr.</i>	12	<i>Lusatia</i>	4	<i>Oldenburg Gr.</i>	17
<i>Hohnstein Gr.</i>	10	<i>Lüneburg Herz.</i>	19	<i>Ortenburg Gr.</i>	18
<i>Hohenems Gr.</i>	14	<i>Lüttich Bist.</i>	18	<i>Osabrük Bist.</i>	17
				<i>Ost-Friesland Fürst.</i>	17

1	1	1
2	2	2
3	3	3
4	4	4
5	5	5
6	6	6
7	7	7
8	8	8
9	9	9
10	10	10
11	11	11
12	12	12
13	13	13
14	14	14
15	15	15
16	16	16
17	17	17
18	18	18
19	19	19
20	20	20
21	21	21
22	22	22
23	23	23
24	24	24
25	25	25
26	26	26
27	27	27
28	28	28
29	29	29
30	30	30
31	31	31
32	32	32
33	33	33
34	34	34
35	35	35
36	36	36
37	37	37
38	38	38
39	39	39
40	40	40
41	41	41
42	42	42
43	43	43
44	44	44
45	45	45
46	46	46
47	47	47
48	48	48
49	49	49
50	50	50

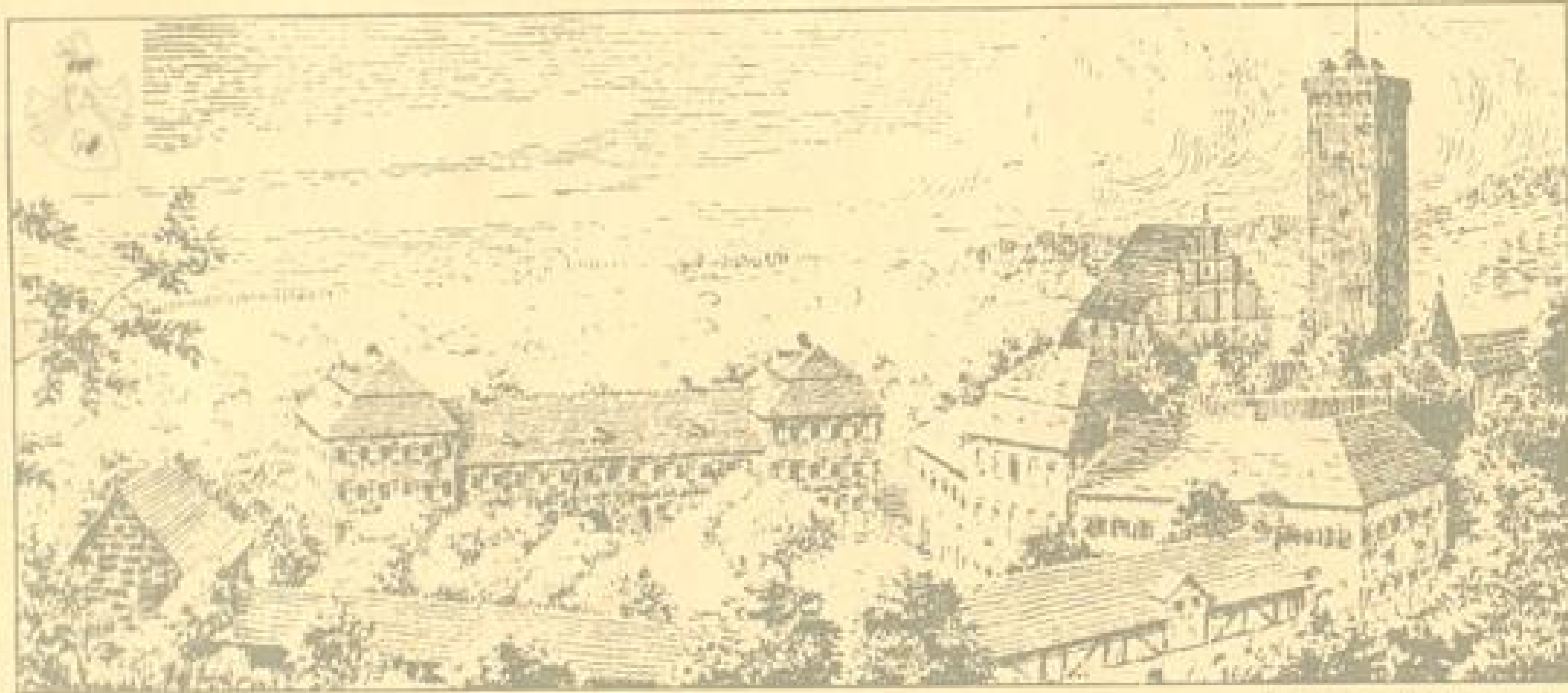


P		<i>Schwarzb. Rudelestadt</i>	20	<i>Ursperg Præl.</i>	14
<i>Paderborn Bist.</i>	17	<i>Schwarzenberg Fürst.</i>	12	W	
<i>Pasau Bist.</i>	15	<i>Schauenburg Gr.</i>	17	<i>Walkenried Kl.</i>	10
<i>Petershausen Præl.</i>	14	<i>Schlesien</i>	4	<i>Waldek Gr.</i>	15
<i>Plätz Churfürst.</i>	9	<i>Schleiden Herrsch.</i>	18	<i>Wangen Rostadt</i>	14
<i>Plätz Neuburg u. Sulzb. Herz.</i>	15	<i>Scheer Gr.</i>	14	<i>Wartenberg Gr.</i>	9
<i>Pfüllendorf Rostadt</i>	14	<i>Schweinfurt Rostadt</i>	12	<i>Wazmar Herz.</i>	10
<i>Pommern Herz.</i>	11	<i>Schönburg Gr.</i>	10	<i>Weil Rostadt</i>	14
<i>Priim Abt.</i>	9	<i>Schwerin Fürst.</i>	19	<i>Wertheim Gr.</i>	12
<i>Pyrmont Gr.</i>	17	<i>Schuffenried Pr.</i>	14	<i>Weisenburg Rostadt</i>	12
Q		<i>Sainsheim H.</i>	12	<i>Weingarten Præl.</i>	14
<i>Quedlinburg Stift</i>	10	<i>Salaria Herz.</i>	4	<i>Weissenau Præl.</i>	14
<i>Quernarth Fürst.</i>	10	<i>Simmern Fürst.</i>	9	<i>Weissenburg Probst.</i>	16
R		<i>Solms Gr.</i>	15	<i>Werden Abt.</i>	17
<i>Ranzau Gr.</i>	19	<i>Speyer Bist.</i>	9	<i>Westerburg Gr.</i>	15
<i>Ravensperg Gr.</i>	17	<i>Speyer Rostadt</i>	9	<i>Wettenhausen Præl.</i>	14
<i>Ravensburg Rostadt</i>	14	<i>Spiegelberg Gr.</i>	17	<i>Wetzlar Rostadt</i>	15
<i>Razeburg Fürst.</i>	19	<i>Sponheim Gr.</i>	9	<i>Wied u. Runkel</i>	9. 15
<i>Reckum Gr.</i>	18	<i>Stablo Abt.</i>	18	<i>Wikerad Herrsch.</i>	27
<i>Rechberg H.</i>	14	<i>Steinwirth Gr.</i>	17	<i>Wiesentheid Herrsch.</i>	12
<i>Regensburg Bist.</i>	15	<i>Sternberg Gr.</i>	15	<i>Windsheim Rostadt</i>	12
<i>Regensburg Rostadt</i>	15	<i>Steyrmark Herz.</i>	5	<i>Wiesensteig Gr.</i>	14
<i>Reichenstein H.</i>	18	<i>Stollberg Gr.</i>	10	<i>Wimpfen Rostadt</i>	14
<i>Reipoltskirchen H.</i>	9	<i>Stollbergische Güter</i>	15	<i>Winnenburg u. Beilstein H. g. 13</i>	14
<i>Rheingrafschaft</i>	9	<i>Strasburger Bist. x</i>	14. 16	<i>Wittem Herrsch.</i>	18
<i>Reigelsberg H.</i>	12	<i>Sulzbürg u. Pyrbaum vel</i>		<i>Witgenstein Gr.</i>	15
<i>Reus Graf.</i>	10	<i>Gr. Wolkestein</i>	15	<i>Wollegg Gr.</i>	14
<i>Reutlingen Rostadt</i>	14	T		<i>Wolffstein Gr. vel Sulzb. u.</i>	
<i>Reinek Burggr.</i>	12	<i>Teklenburg Gr.</i>	17	<i>Pyrbr. H.</i>	15
<i>Reinek Gr.</i>	9	<i>Tengen Gr.</i>	14	<i>Worms Bist.</i>	9. 15
<i>Rielberg Gr.</i>	17	<i>Thanhausen</i>	14	<i>Worms Rostadt</i>	9. 15
<i>Rockenburg Præl.</i>	14	<i>Thorn Abt.</i>	18	<i>Württemberg Herz.</i>	14
<i>Rotenburg Rostadt</i>	12	<i>Thüringen Churf.</i>	10	<i>Würzburg Bist.</i>	12
<i>Roth Præl.</i>	14	<i>Trasp Herrsch.</i>	6	Y	
<i>Rothmünster Abt.</i>	14	<i>Trient Bist.</i>	6	<i>Yrsee Præl.</i>	14
<i>Rotweil Rostadt</i>	14	<i>Trier Churfürst.</i>	9	<i>Ysenburg Nieder Gr.</i>	9
S		<i>Tyrol Gr.</i>	6	<i>Ysenburg Ober Gr.</i>	15
<i>Sachsen Churf.</i>	10	V		Z	
<i>Sanct Emeran Præl.</i>	15	<i>Vaduz et Schellenb. vel Lichten-</i>		<i>Zeil u. Wurzach Gr.</i>	14
<i>Salm Kirburg</i>	9. 16	<i>stein Fürst.</i>	14	<i>Zell Rostadt</i>	14
<i>Salmansweiler Præl.</i>	14	<i>Verden Fürst.</i>	17	<i>Leitz Stift</i>	10
<i>Salzburg ErzB.</i>	15	<i>Vorneburg Gr.</i>	9. 18	<i>Zollern Hechingen</i>	14
<i>Savn Allenk. et Hachenb. Gr. g. 15</i>	15	<i>Vorder Oesterr. Gr.</i>	6	<i>Zollern Sigmaringen</i>	14
<i>Schwaben Fürst.</i>	6	<i>Überlingen Rostadt x</i>	14	<i>Zwiefalten Præl.</i>	14
<i>Schwarzb. Sondersh. F.</i>	10	<i>Ulm Rostadt</i>	14	<i>Zweybrücken Fürst.</i>	9

Faint, illegible text arranged in columns, likely bleed-through from the reverse side of the page.



95 B 7#200 *Ex libris*
Rüdt von Collenberg'sche Schloßbibliothek



Schloß Bödighheim

